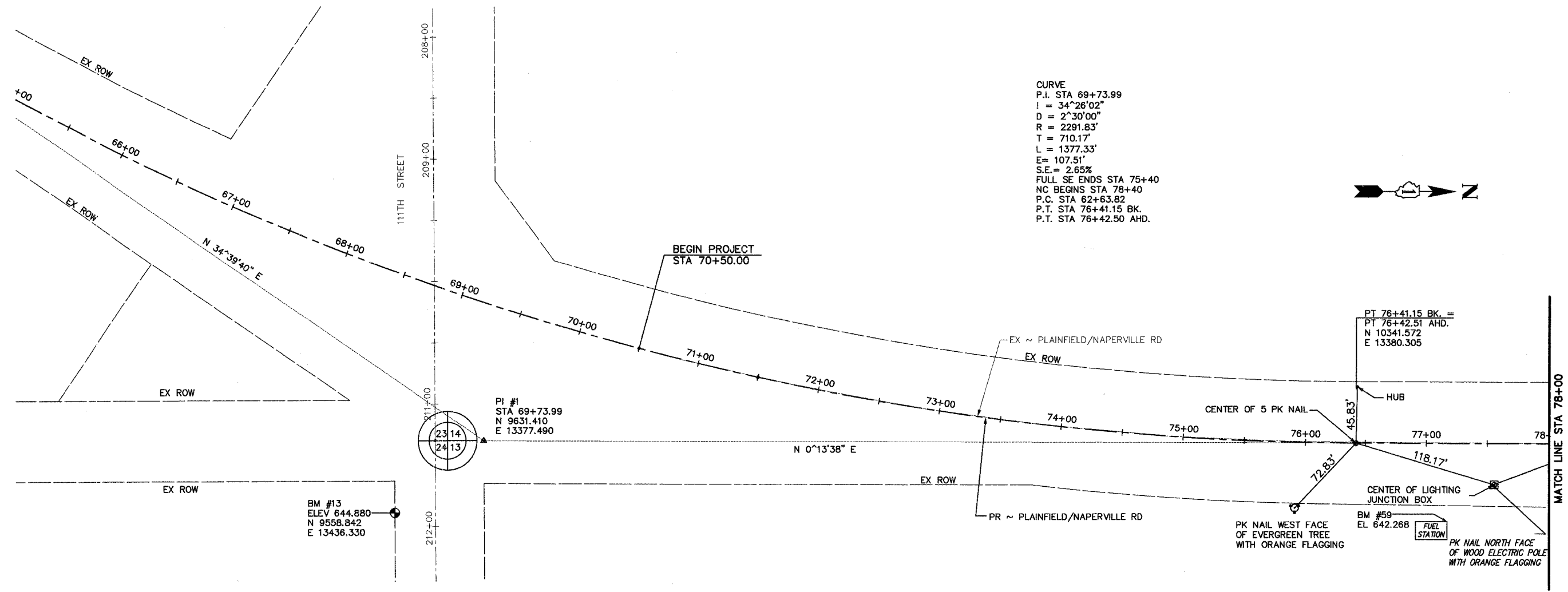


ROUTE NO.	SECTION	COUNTY	TOTAL SHEETS	SHEET NO.
FAU 2545	*	WILL	147	18
FEDERAL DIST. NO. 7		ALMOS	FED. AID PROJECT:	
* 98-00036-19-FP		CONTRACT NO. 83896		

CURVE
 P.I. STA 69+73.99
 I = 34°26'02"
 D = 2°30'00"
 R = 2291.83'
 T = 710.17'
 L = 1377.33'
 E = 107.51'
 S.E. = 2.65%
 FULL SE ENDS STA 75+40
 NC BEGINS STA 78+40
 P.C. STA 62+63.82
 P.T. STA 76+41.15 BK.
 P.T. STA 76+42.50 AHD.



CONTROL POINTS/BENCHMARKS:

- BM #59 APPROXIMATE STA 77+17, 64' RT ~ PLAINFIELD-NAPERVILLE ROAD CUT (O) ON NORTHWEST CORNER OF FUEL STATION CONCRETE PAD AT ENTRANCE RD FOR ADDRESS 10953 PLAINFIELD NAPERVILLE ROAD ELEVATION = 642.268
- BM #58 APPROXIMATE STA 95+54.6, 157.7' RT ~ PLAINFIELD-NAPERVILLE ROAD CUT (X) ON SOUTHWESTERLY BOLT OF FIRE HYDRANT ON SOUTHEAST CORNER OF BOUGHTON ROAD ELEVATION = 628.179
- BM #2 STA 108+17.28, 57.42' LT ~ PLAINFIELD-NAPERVILLE ROAD CUT (+) ON BITUMINOUS BIKE TRAIL NORTH SIDE OF THE PRESEVE SUBDIVISION ENTRANCE ELEVATION = 827.394
 NORTHING 13518.415
 EASTING 13332.569
- BM #13 STA 69+04.76, 185.94' RT. 36" LONG BY 5/8" DIA. THREADED IRON ROD NORTHING 9558.842 EASTING 13436.330 ELEVATION 644.88
- BM #3 STA 115+40.45, 62.10' LT ~ PLAINFIELD-NAPERVILLE ROAD CUT (+) ON SOUTH SIDEWALK OF 104TH STREET ELEVATION = 630.400
 NORTHING 14239.588
 EASTING 13329.077
- BM #57 APPROXIMATE STA 124+24.2, 89.1' LT ~ PLAINFIELD-NAPERVILLE ROAD CUT (O) ON SOUTHWEST CORNER OF CONCRETE BASE FOR ELECTRIC CONTROL BOX ON NORTHWEST CORNER OF SARATOGA ROAD ELEVATION = 642.648
- BM #56 APPROXIMATE STA 156+28.2, 76.7' RT ~ PLAINFIELD-NAPERVILLE ROAD CUT (+) ON SOUTHWEST BOLT OF FIRE HYDRANT ON SOUTHEAST CORNER OF WINNERS CUP COURT ELEVATION = 660.330
- BM #55 APPROXIMATE STA 166+92.6, 49.0' LT ~ PLAINFIELD-NAPERVILLE ROAD CUT (O) ON WEST SIDE OF PLAINFIELD-NAPERVILLE ROAD ON NORTHEAST CORNER OF TOP OF HEADWALL ELEVATION = 643.170

NO.	DATE	REVISION	BY

WILL COUNTY DEPARTMENT OF HIGHWAYS

**PLAINFIELD/NAPERVILLE ROAD (C.H. 14)
 HORIZONTAL ALIGNMENT, TIES AND BENCHMARKS
 STA 65+00 TO STA 78+00**

McDonough Associates Inc. Engineers/Architects	DESIGNED BY: JTF	SCALE: 1" = 40'
	CHECKED BY: DRAWN BY: JTF	

P1
 DRAWING ID: C:\20030023 - Plainfield-Naperville Road\dwg\Ain-Ties.dwg
 PLOT DATE: 07/08/05 - 10:07