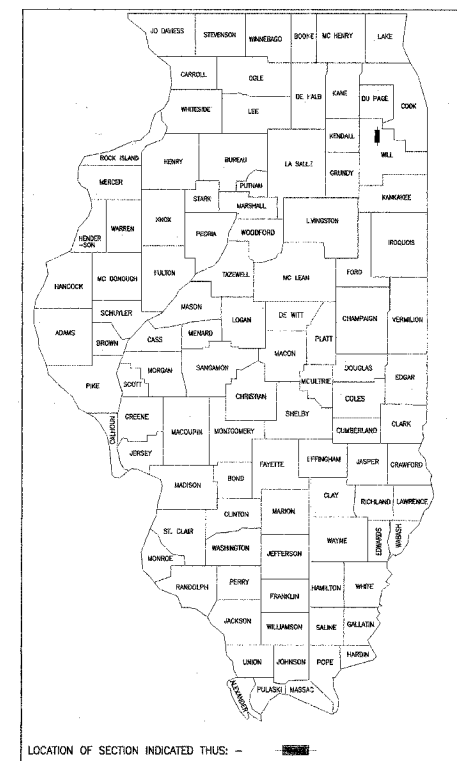


FEDERAL-AID ROUTE NO.	SECTION	COUNTY	TOTAL SHEETS	SHEET NO.
2545	98-00036-19-FP	WILL	150	1
ILLINOIS PROJECT		CONTRACT NO. 83896		

Total Sheets **150**



FOR INDEX OF SHEETS, SEE SHEET NO. 2

# STATE OF ILLINOIS DEPARTMENT OF TRANSPORTATION DIVISION OF HIGHWAYS

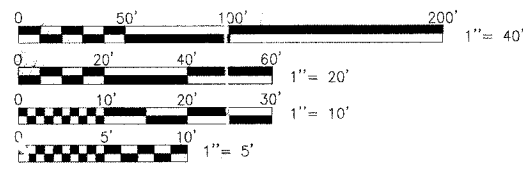
## PLANS FOR PROPOSED FEDERAL AID PROJECT FAU 2545/PLAINFIELD-NAPERVILLE ROAD (C.H. 14) 111TH STREET TO 95TH STREET ROADWAY RECONSTRUCTION

SECTION NO. 98-00036-19-FP  
PROJECT NO. <sup>RS</sup>M- 8003 (744)  
JOB NO. C-91-111-07  
WILL COUNTY

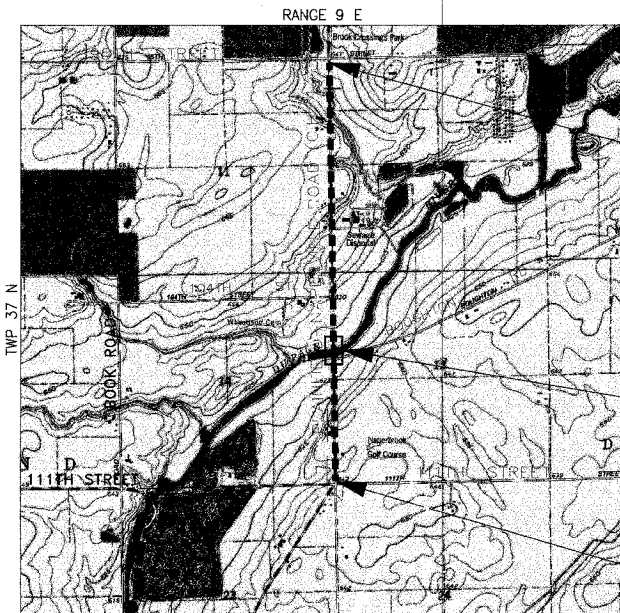
DESIGN DESIGNATION: ADT 23,700(05) ARTERIAL 10.0 (FP20)  
DESIGN SPEED : 45 MPH

FEDERAL AID DESIGN ENGINEER - JESSICA FELICIANO (847) 705-4487  
MCDONOUGH ASSOCIATES INC.

STATION EQUATION:  
PT STA 76+41.15 ~ PLAINFIELD-NAPERVILLE RD. BK. =  
PT STA 76+42.51 ~ PLAINFIELD-NAPERVILLE RD. AHD.



PLAN & PROFILE (HORIZONTAL) 1" = 40'  
CROSS SECTION (HORIZONTAL) 1" = 10'  
PROFILE/CROSS SECTION (VERTICAL) 1" = 5'



LOCATION MAP  
N.T.S.

END PROJECT STA. 166+60.30  
~ Plainfield/Naperville. (C.H. 14)

CONTRACT OMISSION  
STA 97+00 TO STA 107+00

BEGIN PROJECT STA. 70+50.00  
Q Plainfield/Naperville Rd. (C.H. 14)

GROSS LENGTH = 9608.94 FEET (1.82 MILES)  
CONTRACT OMISSION = 1000 FEET (0.19 MILES)  
NET LENGTH = 8608.94 FEET (1.63 MILES)

STATE OF ILLINOIS  
DEPARTMENT OF TRANSPORTATION

APPROVED Dec 18 2006  
*Sheldon C. Holt*  
COUNTY ENGINEER

PASSED JANUARY 3 2007  
*CH Holt*  
ENGINEER OF LOCAL ROADS & STREETS

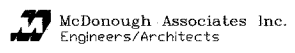
RELEASING FOR BID-BASED ON LIMITED REVIEW January 3 2007  
*Pierrre O'Keefe*  
DEPUTY DIRECTOR OF HIGHWAYS, REGION ONE ENGINEER



DEC 15 20 06  
*Timothy D. Werner*  
TIMOTHY D. WERNER, MCDONOUGH ASSOCIATES INC.  
(708) 226-9261

PRINTED BY THE AUTHORITY OF THE STATE OF ILLINOIS

FOR UTILITY INFORMATION CALL U.U.L.I.E. AT  
1-800-892-0123 - 48 HOURS BEFORE DIGGING



**FINAL**  
DECEMBER 15, 2006

DRAWING ID: G:\20030023 - Plainfield-Naperville Road\dwg\COVER-SHT.dwg  
PLOT DATE: 07/08/05 - 09:10