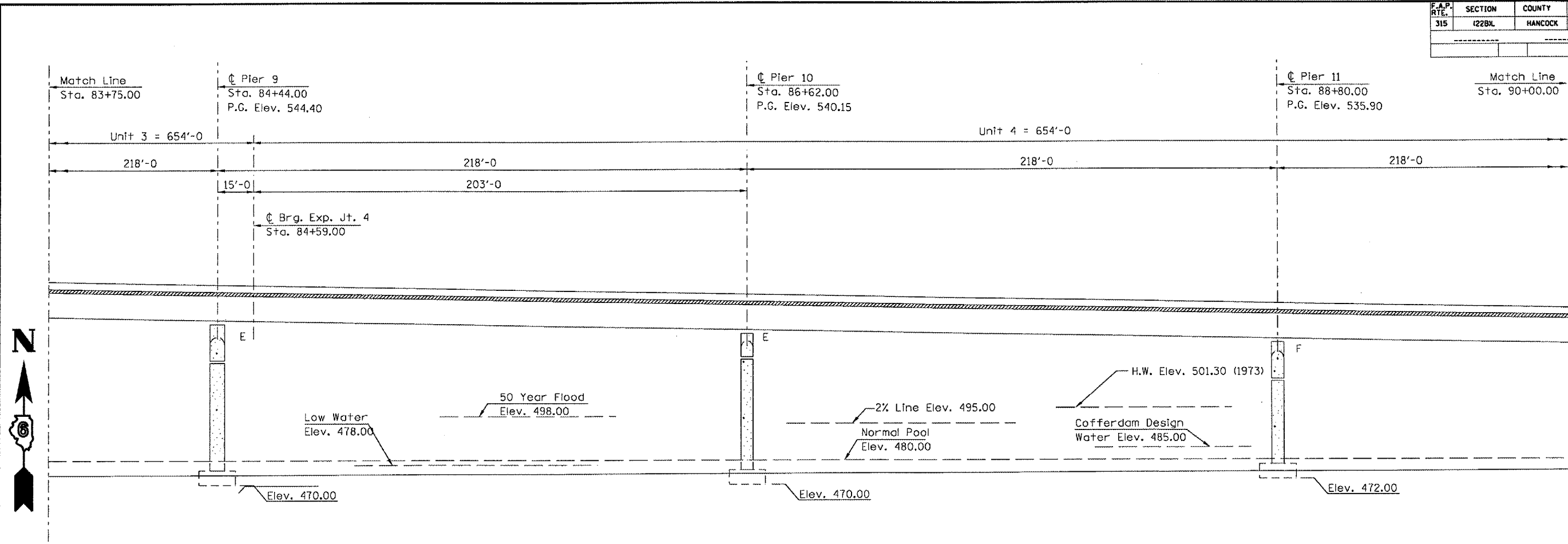
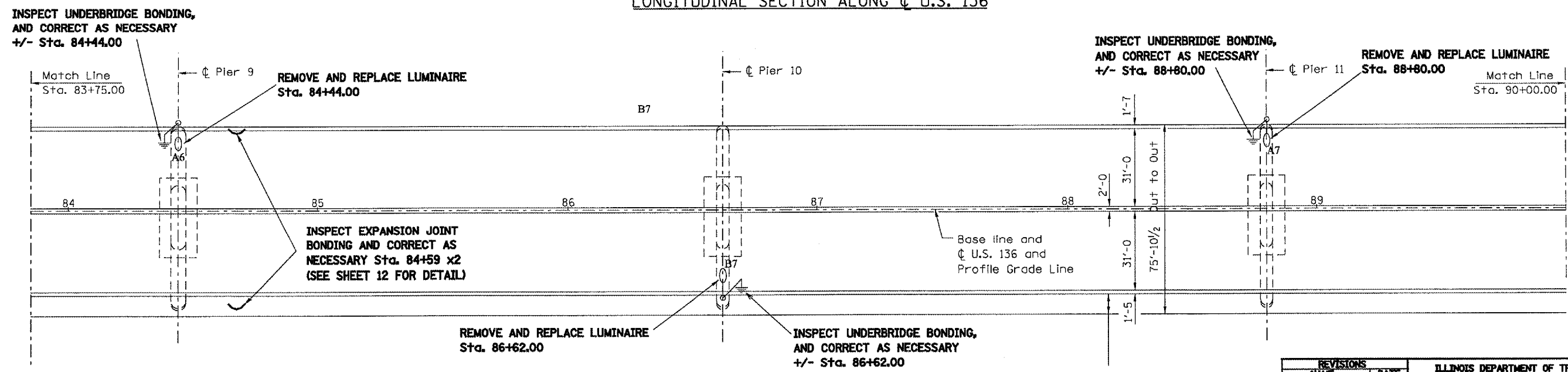


F.A.P. RTE.	SECTION	COUNTY	TOTAL SHEETS	SHEET NO.
315	1228L	HANCOCK	13	9



LONGITUDINAL SECTION ALONG U.S. 136



PLAN

INSPECT UNDERBRIDGE BONDING, AND CORRECT AS NECESSARY +/- Sta. 84+44.00

REMOVE AND REPLACE LUMINAIRE Sta. 84+44.00

INSPECT EXPANSION JOINT BONDING AND CORRECT AS NECESSARY Sta. 84+59 x2 (SEE SHEET 12 FOR DETAIL)

REMOVE AND REPLACE LUMINAIRE Sta. 86+62.00

INSPECT UNDERBRIDGE BONDING, AND CORRECT AS NECESSARY +/- Sta. 86+62.00

INSPECT UNDERBRIDGE BONDING, AND CORRECT AS NECESSARY +/- Sta. 88+80.00

REMOVE AND REPLACE LUMINAIRE Sta. 88+80.00

REVISIONS	
NAME	DATE

ILLINOIS DEPARTMENT OF TRANSPORTATION
PLAN AND PROFILE
 FAP 315 (US 136)
 SECTION 1228L
 HANCOCK COUNTY

DDN-SPEC
 DATE-TIME
 *REF#1