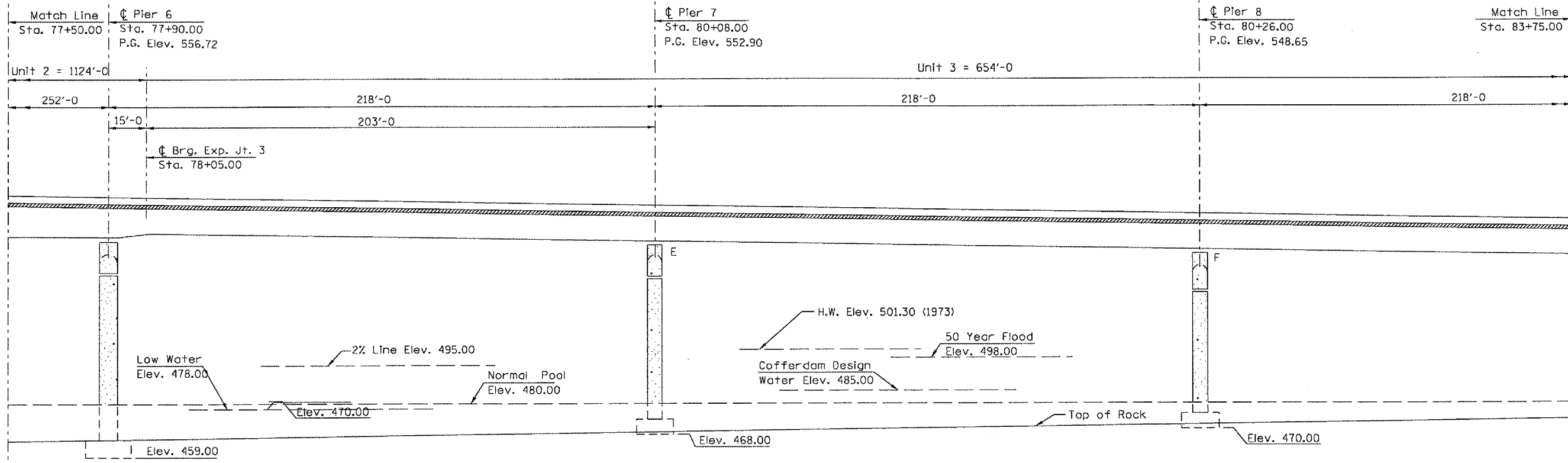
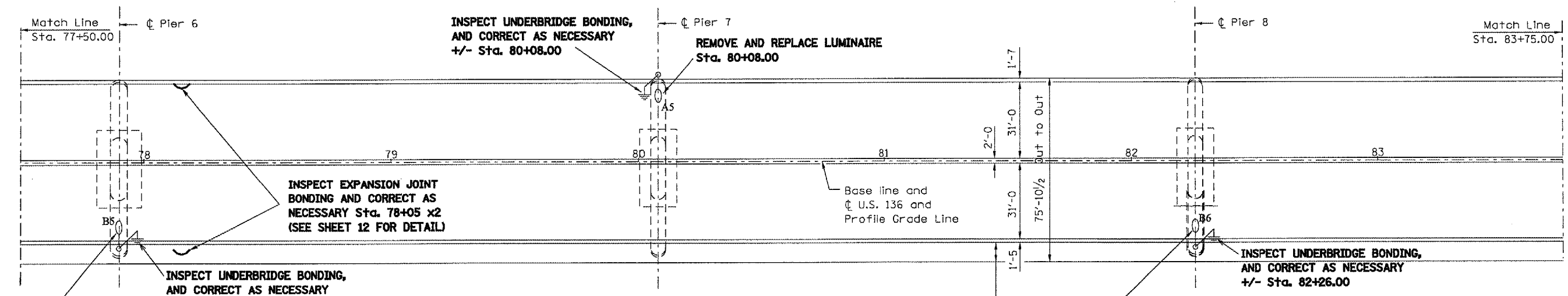


F.A.P. RTE.	SECTION	COUNTY	TOTAL SHEETS	SHEET NO.
315	(228)L	HANCOCK	13	8



LONGITUDINAL SECTION ALONG U.S. 136



PLAN

REVISIONS	
NAME	DATE

ILLINOIS DEPARTMENT OF TRANSPORTATION
 PLAN AND PROFILE
 FAP 315 (US 136)
 SECTION (228)L
 HANCOCK COUNTY

DON-SPEC
 DATE-TIME
 REF#