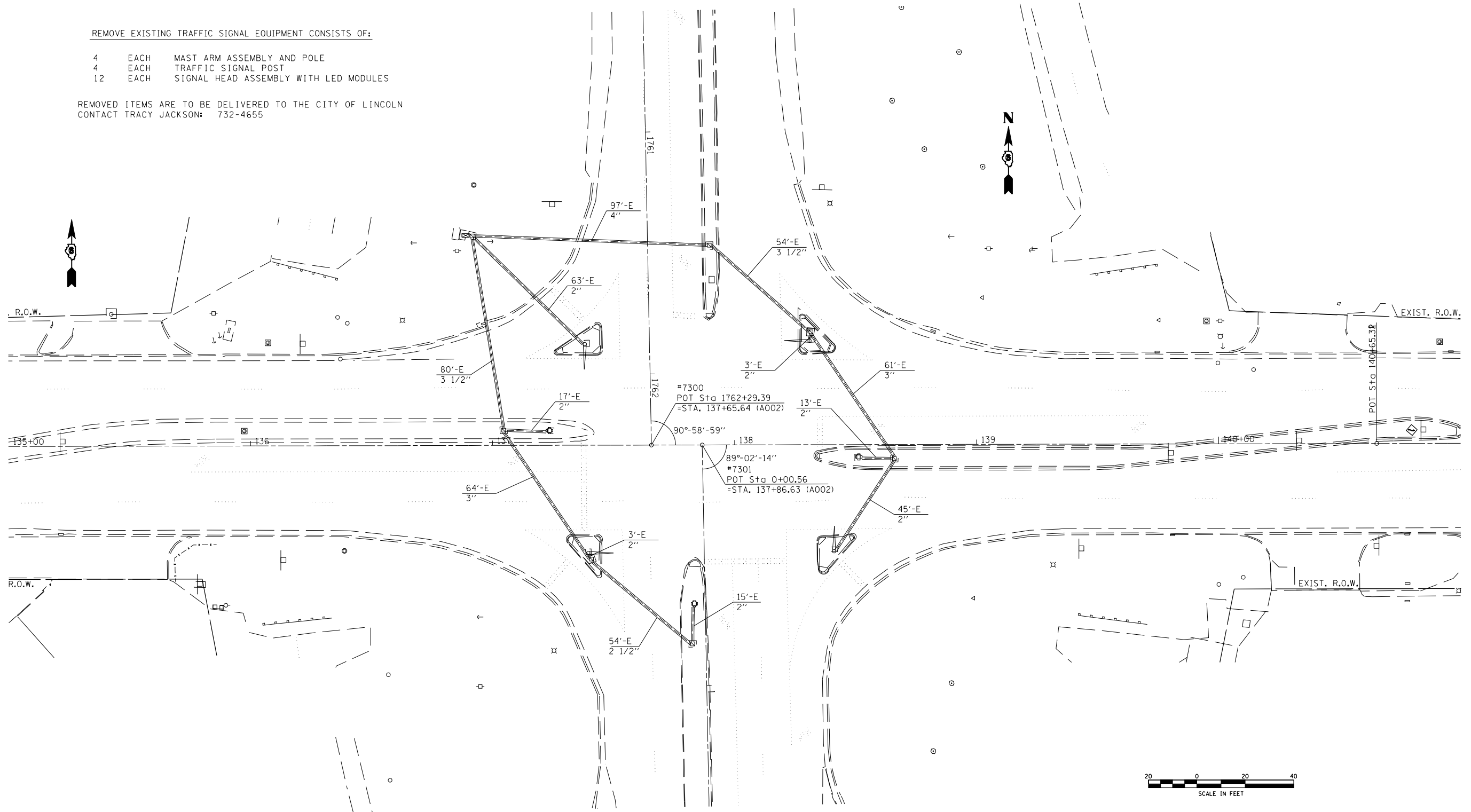


F.A.P. RTE.	SECTION	COUNTY	TOTAL SHEETS	SHEET NO.
320		LOGAN	111	56
STA.		TO STA.		
FED. ROAD DIST. NO.	ILLINOIS	FED. AID PROJECT		
• 103, 22 (I, N, TS)				

REMOVE EXISTING TRAFFIC SIGNAL EQUIPMENT CONSISTS OF:

- 4 EACH MAST ARM ASSEMBLY AND POLE
- 4 EACH TRAFFIC SIGNAL POST
- 12 EACH SIGNAL HEAD ASSEMBLY WITH LED MODULES

REMOVED ITEMS ARE TO BE DELIVERED TO THE CITY OF LINCOLN
CONTACT TRACY JACKSON: 732-4655



PLOT DATE = 3/26/2007
FILE NAME = c:\projects\65338A\ts_sheets.dgn
PLOT SCALE = 42.3525' / IN.
REFERENCE = #REF#

REVISIONS	
NAME	DATE

ILLINOIS DEPARTMENT OF TRANSPORTATION
EXISTING TRAFFIC SIGNALS
LINCOLN PKWY. & WOODLAWN ST.
LOGAN COUNTY
SCALE: VERT. DRAWN BY KDA
 HORIZ. CHECKED BY
DATE: JAN. 2005