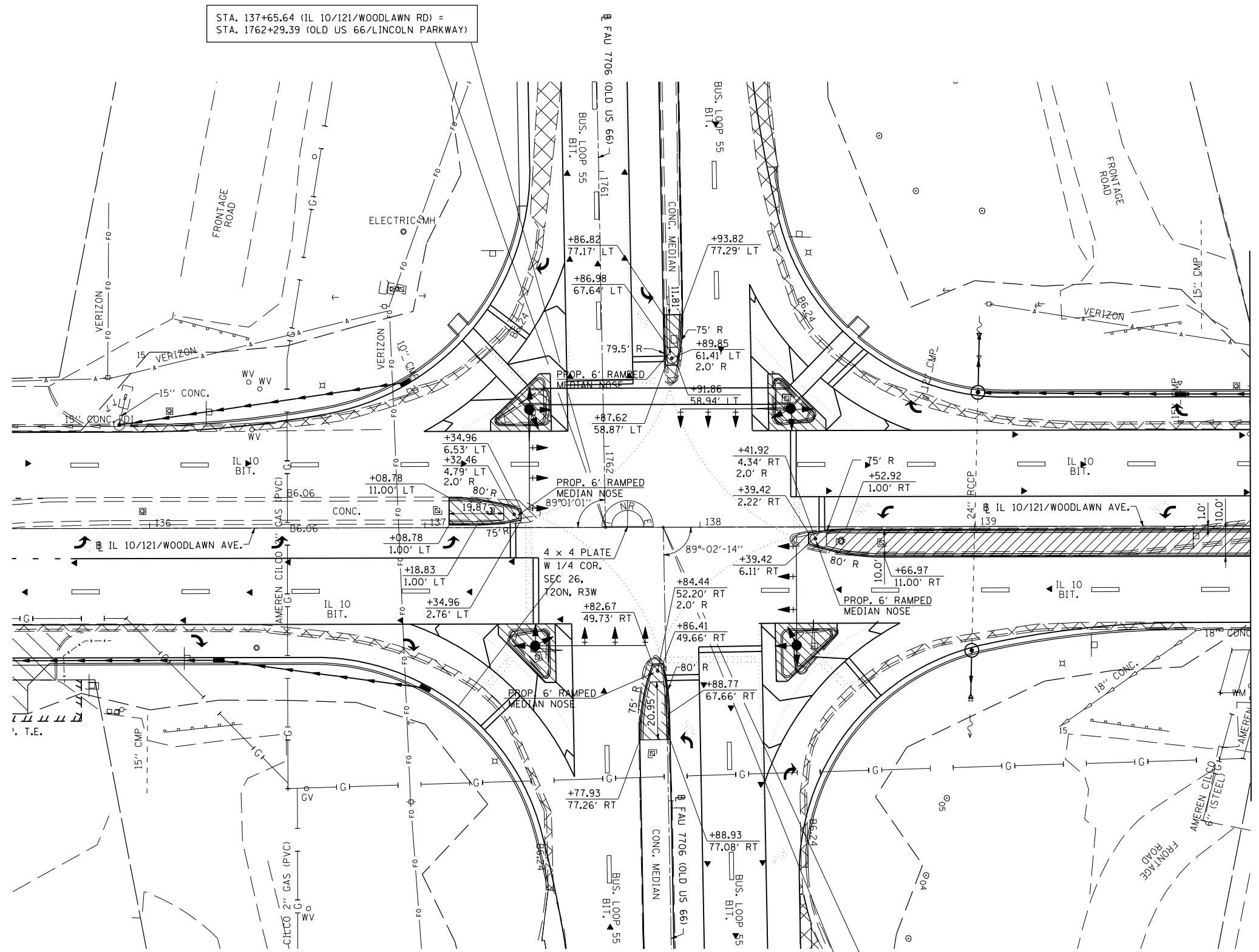
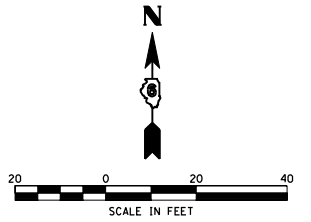


F.A.P. RTE.	SECTION	COUNTY	TOTAL SHEETS	SHEET NO.
320		LOGAN	111	49
STA.		TO STA.		
FED. ROAD DIST. NO.	ILLINOIS	FED. AID PROJECT		

• 103 & 22(I,N,TS)



STA. 137+65.64 (IL 10/121/WOODLAWN RD) =
STA. 1762+29.39 (OLD US 66/LINCOLN PARKWAY)

STA. 137+86.63 (IL 10/121/WOODLAWN RD) =
STA. 0+00.56 (OLD US 66/LINCOLN PARKWAY)

MATCHLINE STA. 140+00.00

PLOT DATE = 3/20/2007
 FILE NAME = c:\projects\653384\shd\detail1.mxd
 PLOT SCALE = 42.3525 / IN.
 USER NAME = laughlin-1

REVISIONS	
NAME	DATE

ILLINOIS DEPARTMENT OF TRANSPORTATION

MEDIAN DETAILS

IL 10/121/WOODLAWN RD.
SECTION 103 & 22(I,N,TS)
LOGAN COUNTY
LINCOLN, IL

SCALE: VERT. _____
HORIZ. _____
DATE: 07-25-05

DRAWN BY: TMJ
CHECKED BY: VTY