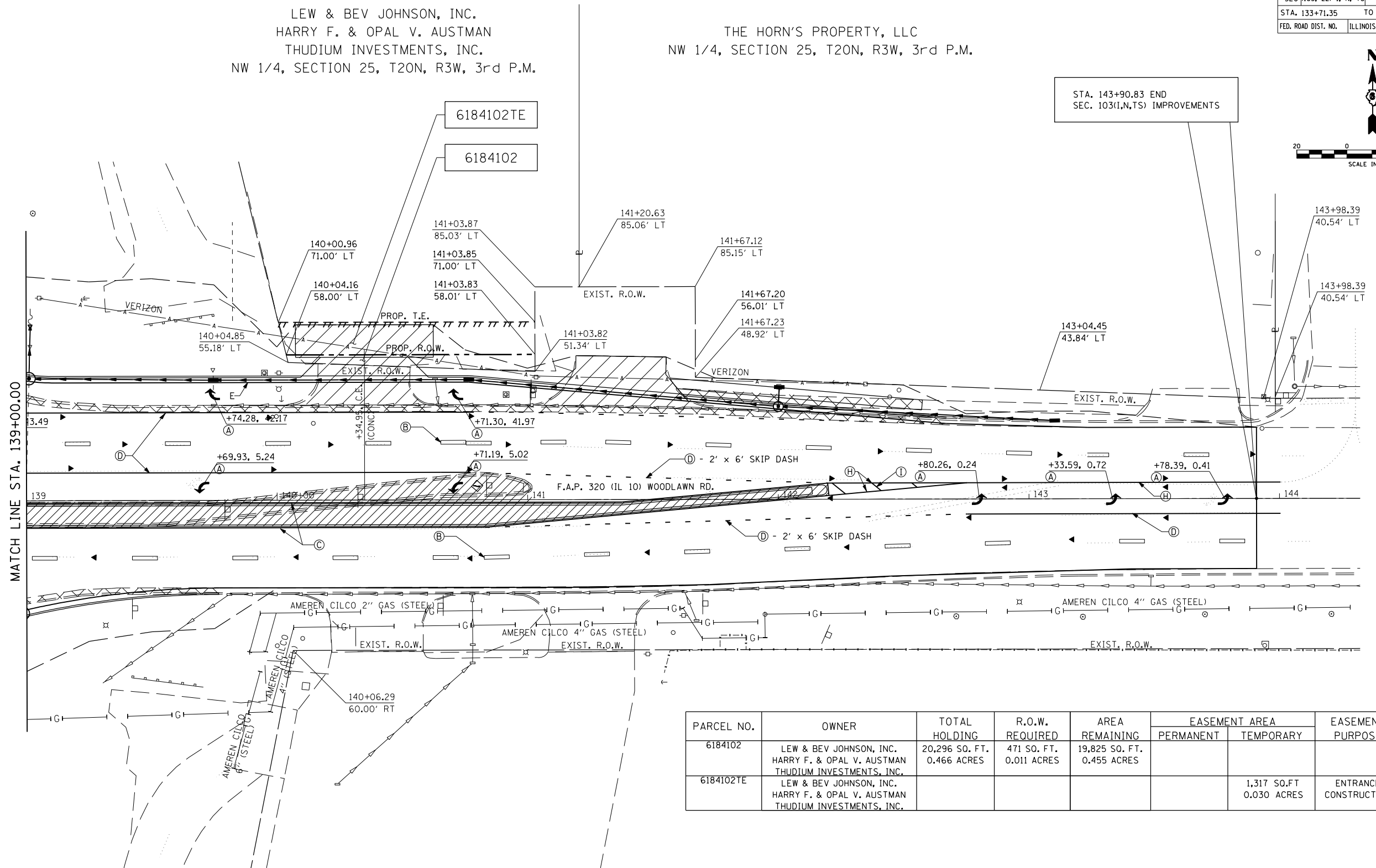
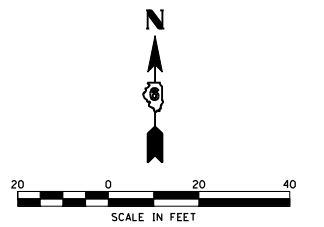


F.A.P. RTE.	SECTION	COUNTY	TOTAL SHEETS	SHEET NO.
320 (103, 22) I, N, TS		LOGAN	111	45
STA. 133+71.35		TO STA. 139+00.00		
FED. ROAD DIST. NO.	ILLINOIS	FED. AID PROJECT		

LEW & BEV JOHNSON, INC.
 HARRY F. & OPAL V. AUSTMAN
 THUDIUM INVESTMENTS, INC.
 NW 1/4, SECTION 25, T20N, R3W, 3rd P.M.

THE HORN'S PROPERTY, LLC
 NW 1/4, SECTION 25, T20N, R3W, 3rd P.M.

STA. 143+90.83 END
 SEC. 103(1,N,TS) IMPROVEMENTS



PARCEL NO.	OWNER	TOTAL HOLDING	R.O.W. REQUIRED	AREA REMAINING	EASEMENT AREA		EASEMENT PURPOSE
					PERMANENT	TEMPORARY	
6184102	LEW & BEV JOHNSON, INC. HARRY F. & OPAL V. AUSTMAN THUDIUM INVESTMENTS, INC.	20,296 SQ. FT. 0.466 ACRES	471 SQ. FT. 0.011 ACRES	19,825 SQ. FT. 0.455 ACRES			
6184102TE	LEW & BEV JOHNSON, INC. HARRY F. & OPAL V. AUSTMAN THUDIUM INVESTMENTS, INC.					1,317 SQ.FT 0.030 ACRES	ENTRANCE CONSTRUCTION

PLOT DATE = 3/28/2007
 FILE NAME = c:\projects\653380\shiplan\row.dgn
 PLOT SCALE = 42.3525 / IN.
 USER NAME = laughlin-1

REVISIONS	
NAME	DATE

ILLINOIS DEPARTMENT OF TRANSPORTATION
RIGHT OF WAY DETAILS
 F.A.P. 320 (IL 10)
 SEC. (103, 22) I, N, TS
 LOGAN COUNTY
 LINCOLN, IL.
 SCALE: VERT. _____
 HORIZ. _____
 DATE 05-23-05
 DRAWN BY TMJ
 CHECKED BY VTY