

F.A.P. RTE.	SECTION	COUNTY	TOTAL SHEETS	SHEET NO.
320	.	LOGAN	111	36

STA. TO STA.
ILLINOIS FED. AID PROJECT

• 103 & 22(I,N,TS)
PR STORM SEWER
TY 1, WATER MAIN QUALITY
105 L.F., 15" @ 0.40%

PLAN	DATE	BY
SURVEYED		
PLOTTED		
CHECKED		
NO. OF WAY CHECKED		
CADD FILE NAME		

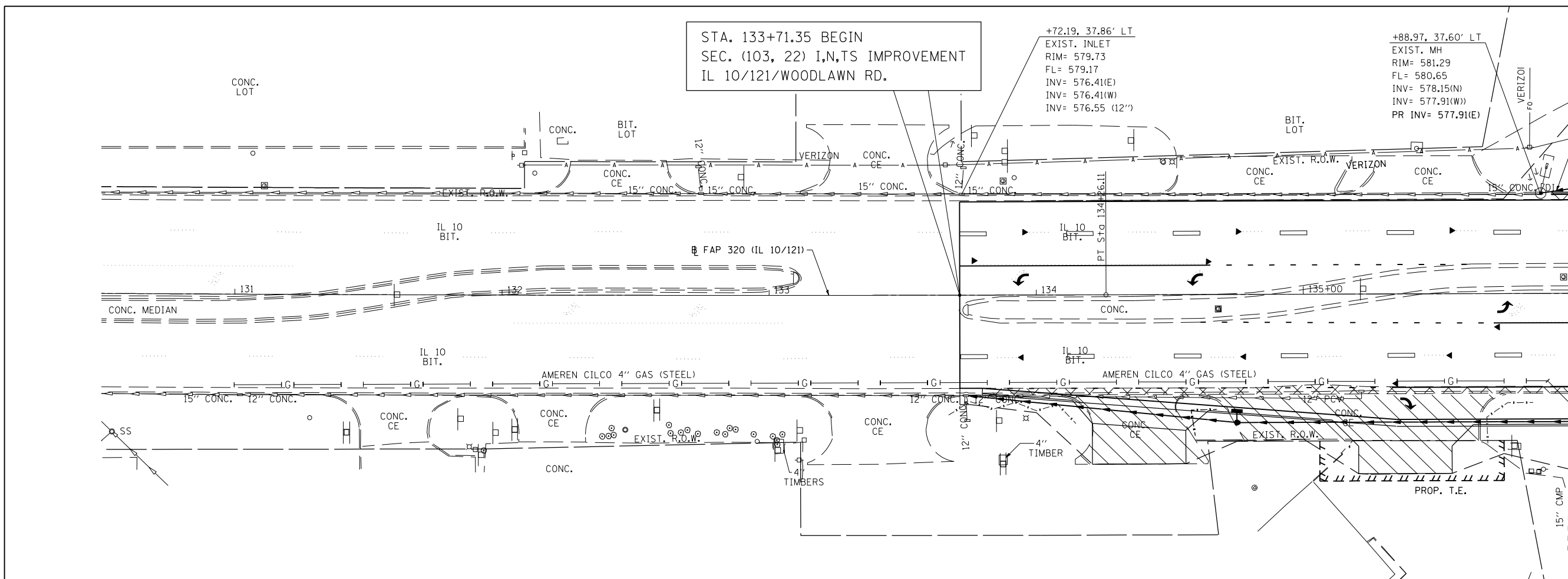
PROFILE	DATE	BY
SURVEYED		
PLOTTED		
CHECKED		
NO. OF WAY CHECKED		
STRUCTURE NOTATIONS CHKD		

PLOT DATE = 3/28/2007
FILE NAME = c:\projects\66338A\shp&pad\ng\101.dgn
PLOT SCALE = 42.35' / IN.
USER NAME = laughlin-1

STA. 133+71.35 BEGIN
SEC. (103, 22) I,N,TS IMPROVEMENT
IL 10/121/WOODLAWN RD.

+72.19, 37.86' LT
EXIST. INLET
RIM= 579.73
FL= 579.17
INV= 576.41(E)
INV= 576.41(W)
INV= 576.55 (12")

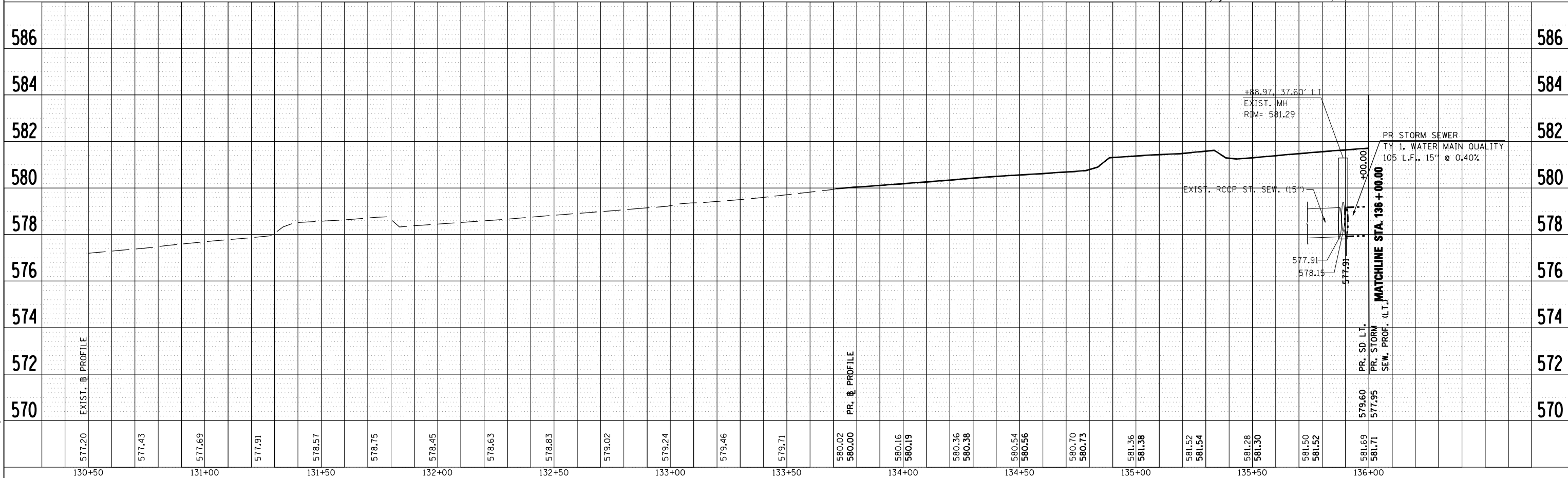
+88.97, 37.60' LT
EXIST. MH
RIM= 581.29
FL= 580.65
INV= 578.15(N)
INV= 577.91(W)
PR INV= 577.91(E)



MATCHLINE STA. 136+00.00

LEGEND

CONSTRUCTION LIMITS



FAP 320 (IL 10/121/WOODLAWN RD.) - LT. OF STA.