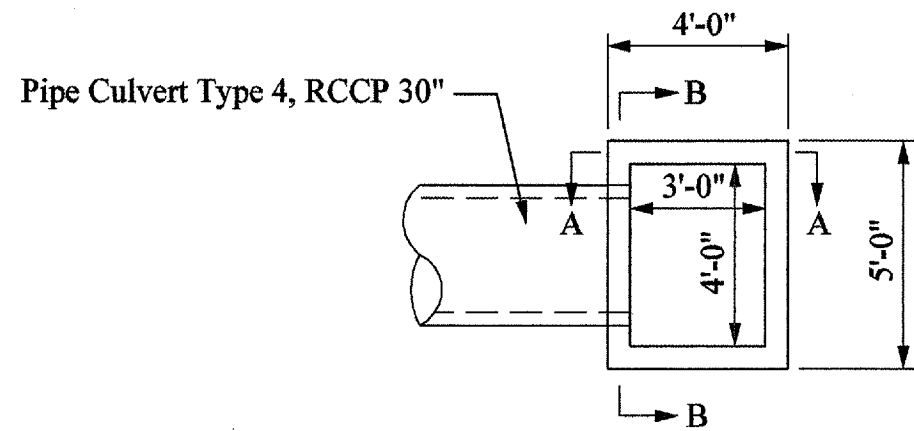
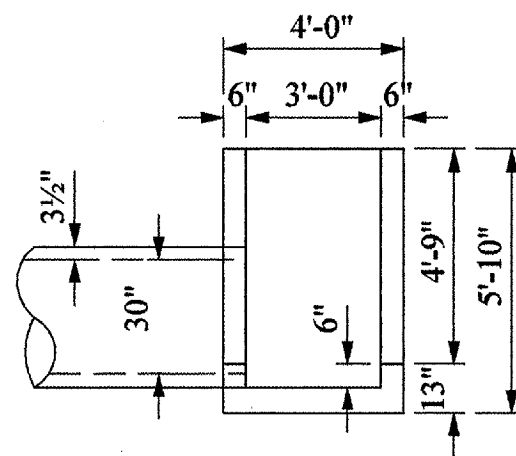


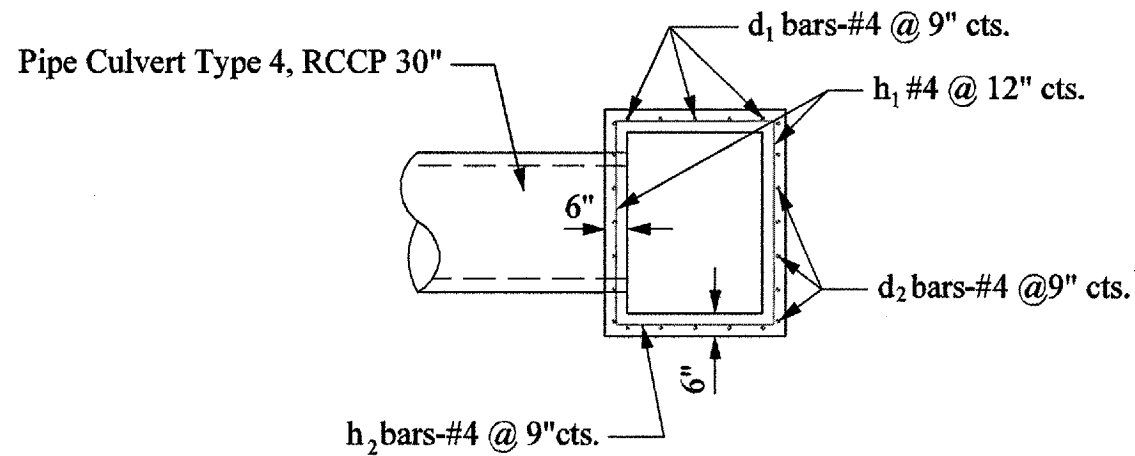
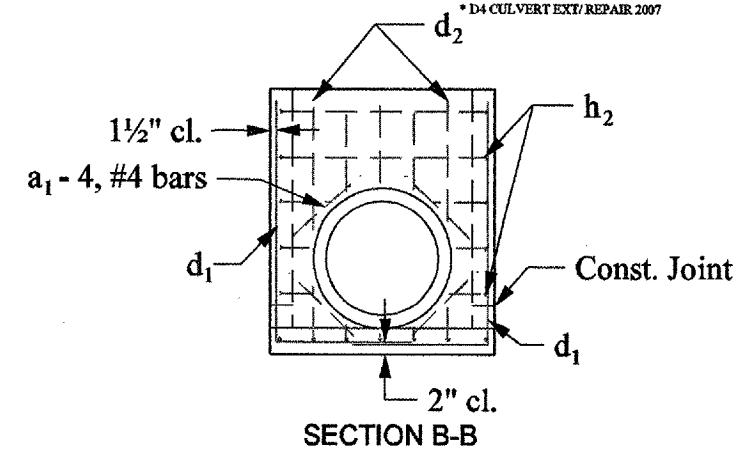
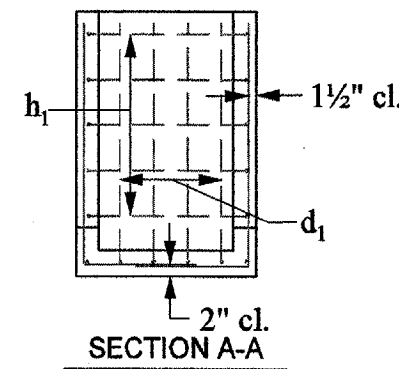
F.A.P. RTE.	SECTION	COUNTY	TOTAL SHEETS	SHEET NO.
687	*	Fulton	37	15
STA.		TO STA.		
FED. ROAD DIST. NO.		ILLINOIS	FED. AID PROJECT	



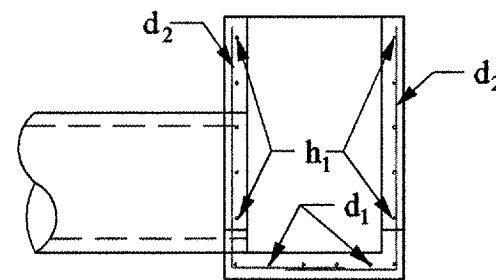
PLAN SHOWING OUTLINES
Lt. STA. 591+17.6 (SKEW ANGLE = 8.74°)



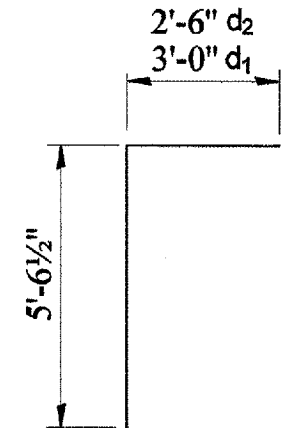
ELEVATION SHOWING OUTLINES
Lt. STA. 591+17.6 (SKEW ANGLE = 8.74°)



PLAN SHOWING REINFORCEMENT
Lt. STA. 591+17.6 (SKEW ANGLE = 8.74°)



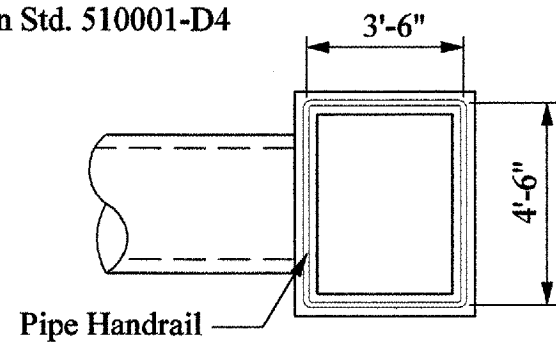
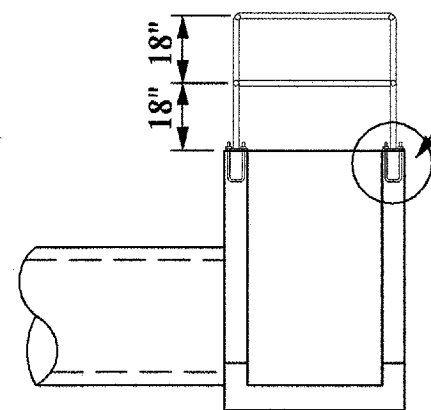
ELEVATION SHOWING REINFORCEMENT
Lt. STA. 591+17.6 (SKEW ANGLE = 8.74°)



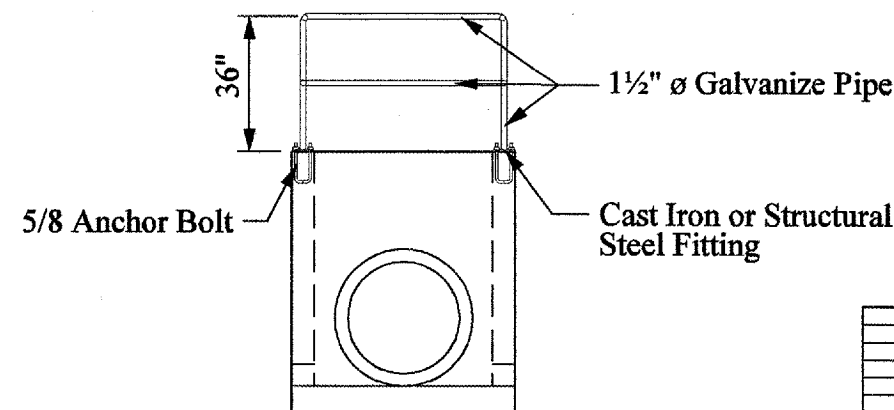
BAR d1 & d2

BILL OF MATERIAL

Bar	No.	Size	Length	Shape
a1	4	#4	2'-0"	—
d1	10	#4	8'-6 1/2"	┌
d2	14	#4	8'-0 1/2"	┌
h1	10	#4	3'-8"	—
h2	10	#4	4'-9"	—
Class SI Concrete			Cu. Yd.	2.0
Reinforcement Bars			Pound	195.20



PIPE HANDRAIL DETAILS



REVISIONS	
NAME	DATE

ILLINOIS DEPARTMENT OF TRANSPORTATION
Drop Structure
Rt Sta. 591+17.6
SCALE: VERT. DATE
HORIZ. DATE
DRAWN BY
CHECKED BY