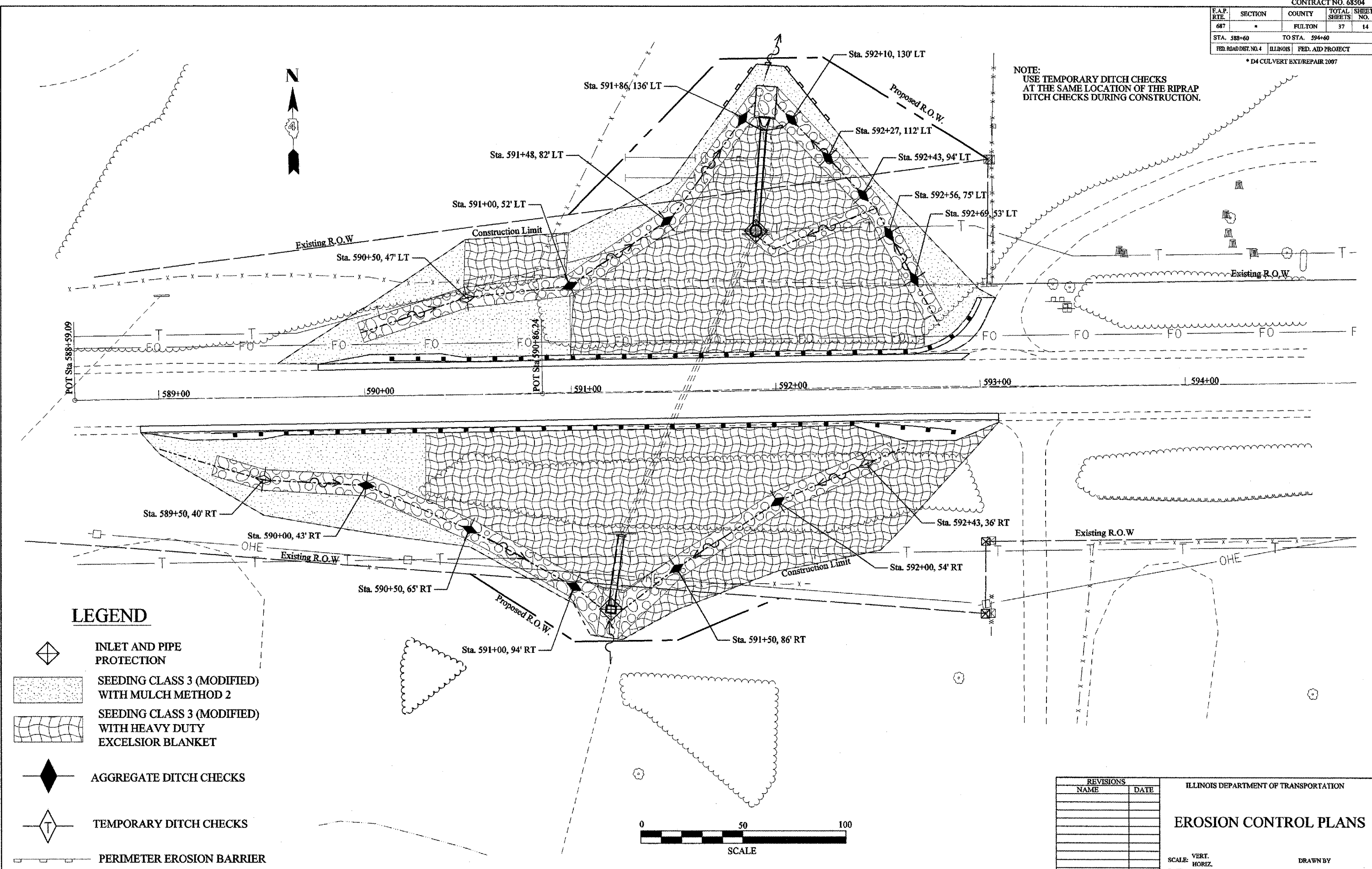



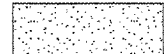


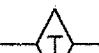
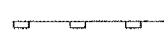
F.A.P. RTE.	SECTION	COUNTY	TOTAL SHEETS	SHEET NO.
687	*	FULTON	37	14
STA. 588+60		TO STA. 594+60		
FED. ROAD DIST. NO. 4		ILLINOIS	FED. AID PROJECT	

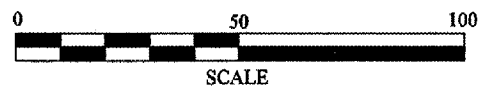
* D4 CULVERT EXT/REPAIR 2007

NOTE:
USE TEMPORARY DITCH CHECKS
AT THE SAME LOCATION OF THE RIPRAP
DITCH CHECKS DURING CONSTRUCTION.



LEGEND

-  INLET AND PIPE PROTECTION
-  SEEDING CLASS 3 (MODIFIED) WITH MULCH METHOD 2
-  SEEDING CLASS 3 (MODIFIED) WITH HEAVY DUTY EXCELSIOR BLANKET
-  AGGREGATE DITCH CHECKS
-  TEMPORARY DITCH CHECKS
-  PERIMETER EROSION BARRIER



REVISIONS	
NAME	DATE

ILLINOIS DEPARTMENT OF TRANSPORTATION

EROSION CONTROL PLANS

SCALE: VERT. HORIZ. DATE

DRAWN BY CHECKED BY

PLOT DATE = 3/13/2007
FILE NAME = c:\projects\198001\198001.dgn
PLOT SCALE = 42.4873' / IN.
USER NAME = crespala