

68504

F.A.P.	SECTION	COUNTY	TOTAL SHEETS	SHEET NO.
687	*	Fulton	37+1	1

\* D4 CULVERT EXT/REPAIR 2007 = 38 total sheets

### INDEX OF SHEETS

1. COVER SHEET
2. COMMITMENT & GENERAL NOTES
3. GENERAL NOTES & STATUS OF UTILITIES
- 4,5. SUMMARY OF QUANTITIES
6. TYPICAL SECTIONS
- 7-10. SCHEDULE OF QUANTITIES
11. EXISTING & REMOVAL PLANS
- 12,13. PROPOSED PLANS & DITCH PROFILE PLANS
14. EROSION CONTROL PLANS
15. DROP STRUCTURE DETAIL
- 16-26. CADD STANDARDS:
  - 205001-D4    510001-D4    630101-D4
  - 280101-D4    542011-D4    635101-D4
  - 281001-D4    604301-D4

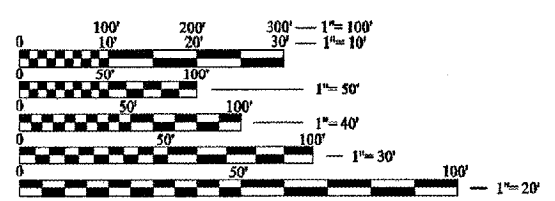
26A TRAFFIC BARRIER TERMINAL, TYPE 2  
 27-37 CROSS SECTIONS

### LIST OF STANDARDS:

- |           |           |           |           |
|-----------|-----------|-----------|-----------|
| 280001-03 | 630001-07 | 635011-01 | 701201-02 |
| 542301-01 | 630301-04 | 666001    | 701301-02 |
| 602401-01 | 631011-03 | 701001-01 | 702001-06 |
| 602701-01 | 635006-02 | 701006-02 |           |

ADT = 1,500  
 MU = 1.3%  
 SU = 5.2%

### SCALES

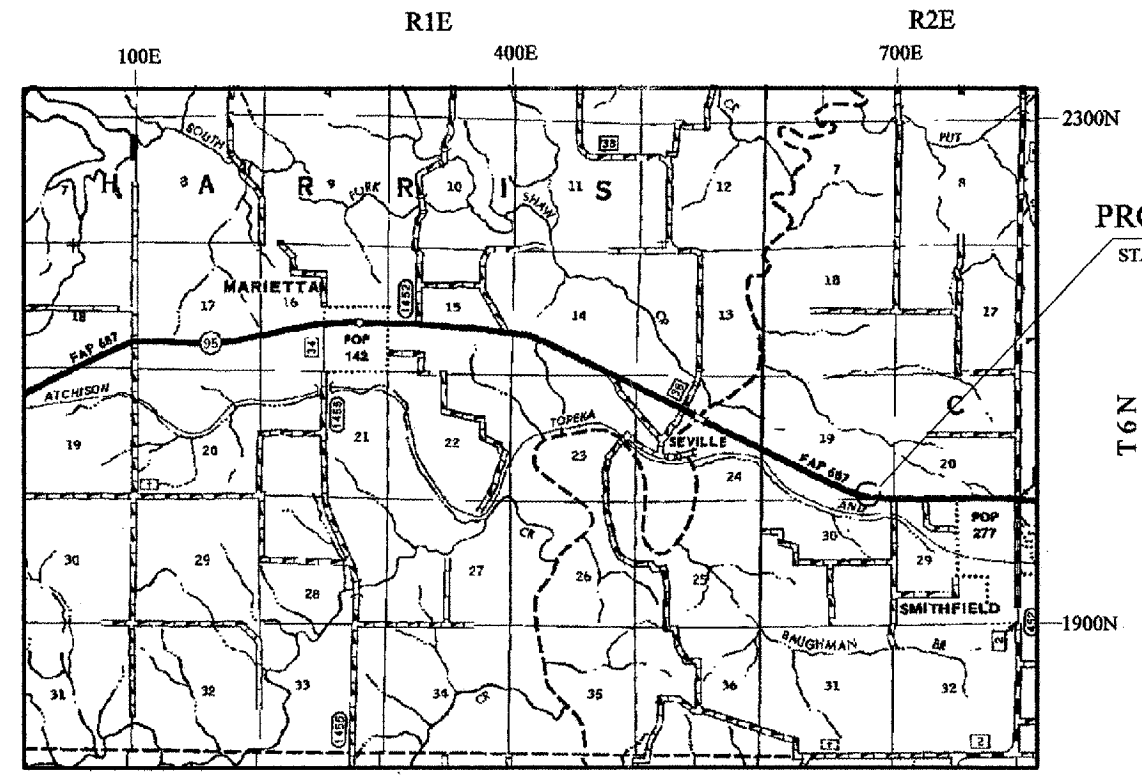


FULL SIZE PLANS HAVE BEEN PREPARED USING STANDARD ENGINEERING SCALES. REDUCED SIZED PLANS WILL NOT CONFORM TO STANDARD SCALES. IN MAKING MEASUREMENTS ON REDUCED PLANS, THE ABOVE SCALES MAY BE USED.

J.U.L.I.E.  
 JOINT UTILITY LOCATION INFORMATION FOR EXCAVATION  
 1-800-892-0123

CONTRACT NO. 68504  
 CATALOG NO. 032839-02D

STATE OF ILLINOIS  
 DEPARTMENT OF TRANSPORTATION  
 DIVISION OF HIGHWAYS  
**PROPOSED  
 HIGHWAY PLANS**  
 F.A.P. ROUTE 687 (IL. ROUTE 95)  
 D4 CULV EXT/REPAIR 2007  
 FULTON COUNTY  
 C-94-112-05



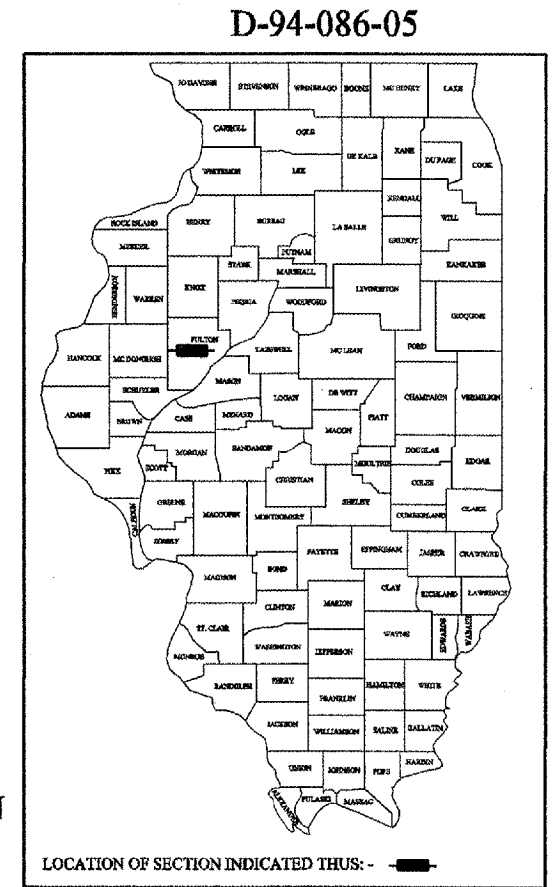
PROJECT LOCATION  
 STA. 588+59.09 TO STA. 593+10



GROSS LENGTH OF SECTION = 418.84 FEET = 0.08 Mile  
 NET LENGTH OF SECTION = 418.84 FEET = 0.08 Mile

N.P.D.E.S.  
 REQUIRED

PRINTED BY THE AUTHORITY OF THE STATE OF ILLINOIS



DESCRIPTION:  
 This improvement consist of the extention of a cross road culvert, slope repair, installation of guardrail and others related works.

STATE OF ILLINOIS  
 DEPARTMENT OF TRANSPORTATION  
 DIVISION OF HIGHWAYS

SUBMITTED MARCH 23, 2007

*[Signature]*  
 DEPUTY DIRECTOR OF HIGHWAYS, REGION ENGINEER

May 11, 2007  
*[Signature]*  
 ENGINEER OF DESIGN AND ENVIRONMENT

May 11, 2007  
*[Signature]*  
 DIRECTOR OF HIGHWAYS, CHIEF ENGINEER

PROJECT ENGINEER: M. ADDIS 309-671-3454  
 DESIGNER: LEONEL CRESPO 309-671-3459