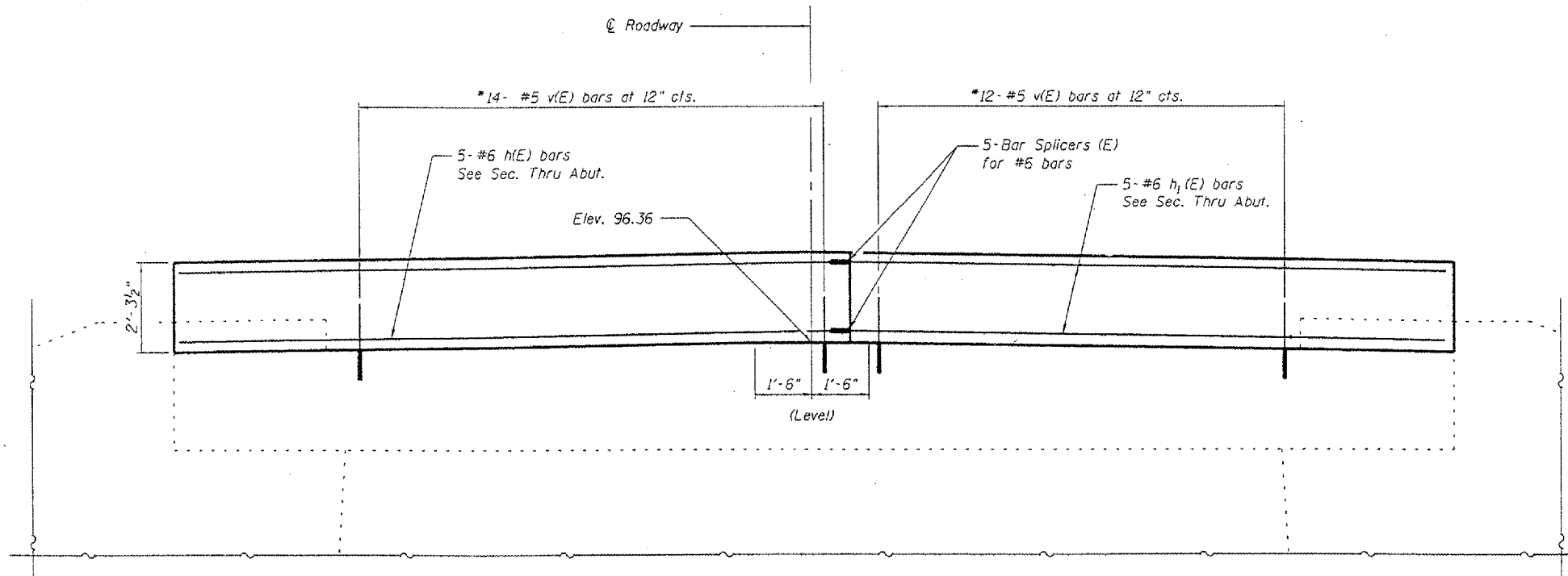


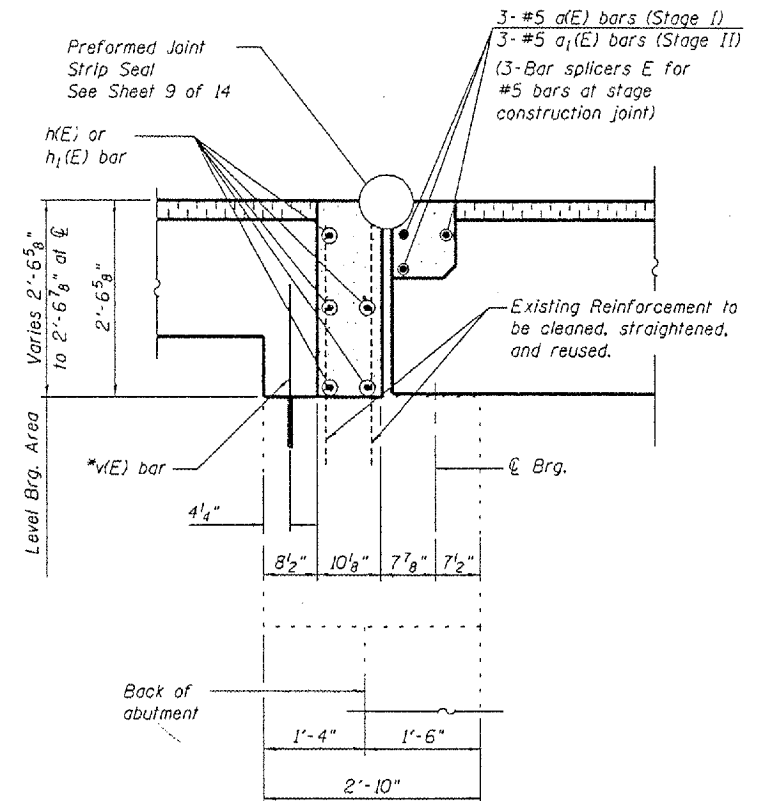
STATE OF ILLINOIS
DEPARTMENT OF TRANSPORTATION

ROUTE NO.	SECTION	COUNTY	SHEETS	SHEET NO.
F.A.P. 693	119B-311	TAZEWELL	34	20
SHEET NO. 11 14 SHEETS				

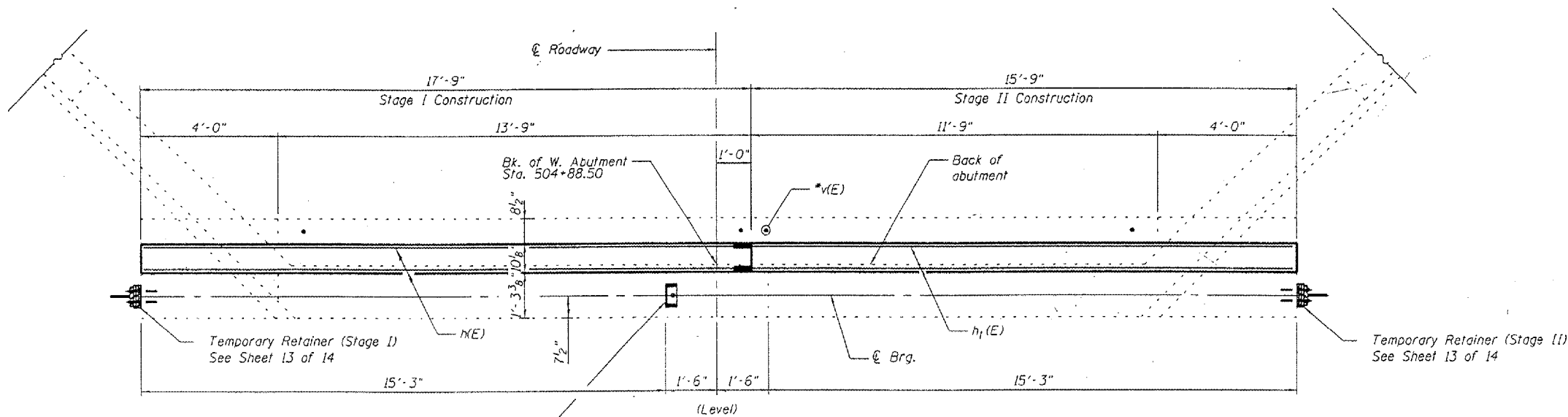
Contract #68415



ELEVATION
(Looking West)



SECTION THRU WEST ABUTMENT



PLAN

BILL OF MATERIAL

Bar	No.	Size	Length	Shape	
h(E)	5	#6	17'-6"	—	
h1(E)	5	#6	15'-6"	—	
a(E)	3	#5	17'-3"	—	
a1(E)	3	#5	15'-3"	—	
v(E)	26	#5	2'-0"	—	
Concrete Structures				Cu. Yd.	3.4
Reinforcement Bars, Epoxy Coated				Pound	400

* Epoxy grout v(E) bars in 9" (Min.) drilled holes according to Section 584 of the Standard Specification

DESIGNED BWP	THOUVENOT, WADE & MOERCHEN, INC. CORP. OFFICE 4140 OLD COLLINGSWELL RD. SPRINGFIELD, ILLINOIS 62226 TEL: (618) 824-4488 FAX: (618) 824-4489 E-MAIL: CORP@TWI-INC.COM
CHECKED KPC	
DRAWN BWP	
CHECKED KPC	

WEST ABUTMENT
ILLINOIS ROUTE 9 OVER
PRAIRIE CREEK
F.A.P. ROUTE 693 SECTION (119B-311)
TAZEWELL COUNTY
SN 090-0061