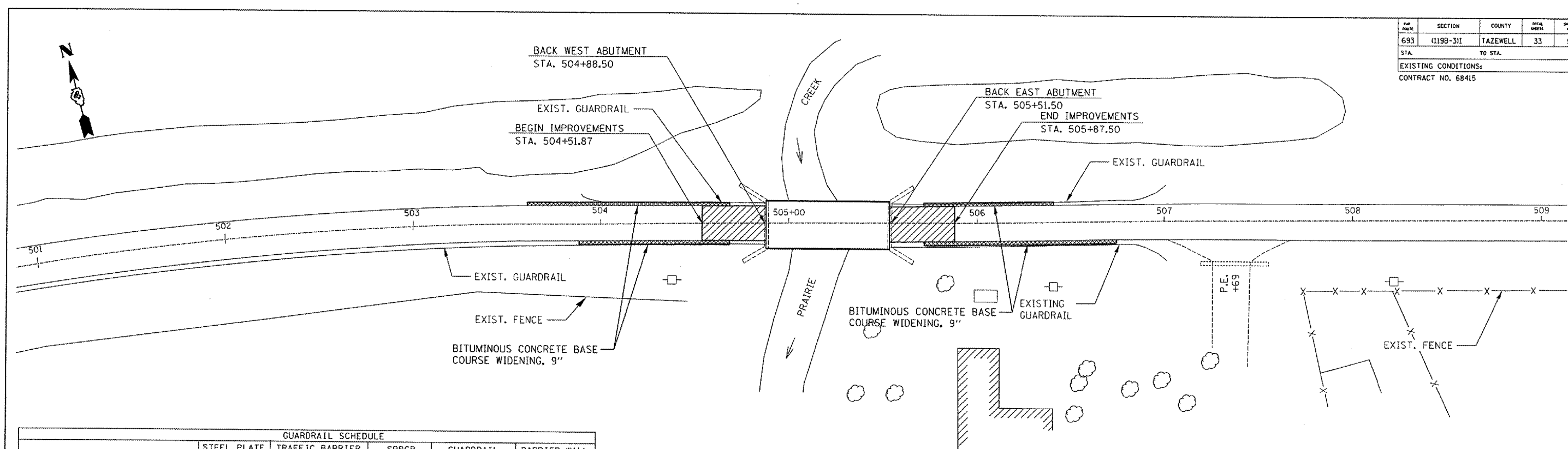


SECTION	COUNTY	DIST. SHEETS	SHEET NO.
693 (119B-3)I	TAZEWELL	33	5
EXISTING CONDITIONS:			
CONTRACT NO. 68415			



GENERAL SITE PLAN

STATION TO STATION	STEEL PLATE BEAM GUARD RAIL, TYPE A (FOOT)	TRAFFIC BARRIER TERMINAL, TYPE 6A (EACH)	SPBGR REMOVAL (FOOT)	GUARDRAIL MARKERS T-A (EACH)	BARRIER WALL MARKER T-A (EACH)
504+37.25 LT. TO 504+68.50 LT.			31.25		
504+37.25 RT. TO 504+68.50 RT.			31.25		
505+71.50 LT. TO 506+02.75 LT.			31.25		
505+71.50 RT. TO 506+02.75 RT.			31.25		
504+37.25 RT. TO 504+68.50 RT.	25	1		2	
505+71.50 RT. TO 506+02.75 RT.	25	1		2	
504+37.25 LT. TO 504+68.50 LT.	25	1		2	
505+71.50 LT. TO 506+02.75 LT.	25	1		2	
504+68.50 RT. TO 505+71.50 RT.					2
504+68.50 LT. TO 505+71.50 LT.					2
TOTAL:	100	4	125	8	4

STATION TO STATION	BITUMINOUS MATERIALS PRIME COAT (GALLON)	AGGREGATE PRIME COAT (TON)	PAYEMENT REMOVAL (SQ. YD.)	HOT-MIX ASPHALT SURFACE COURSE MIX D, N50 (TON)
504+51.87 TO 504+88.00	17.5	0.5		13.5
505+52.00 TO 505+87.50	17.5	0.5		13.5
504+87.87 TO 505+51.50			92	33
504+51.87 TO 505+87.50				
TOTAL:	35	1	92	53

STATION TO STATION	SHORT TERM PAVEMENT MARKINGS (FOOT)	TEMPORARY PAVEMENT MARKING LINE 4" (FT.)	WORK ZONE PAVEMENT MARKING REMOVAL (SQ. FT.)	EPOXY PAVEMENT MARKING LINE 4" (FOOT)		PAVEMENT MARKING REMOVAL (SQ. FT.)
				WHITE	YELLOW	
501+51.00 (TO 508+60.00 (144		48	1418	473	
501+51.00 RT. TO 508+60.00 RT.			236.3			
501+51.00 LT. TO 508+60.00 LT.			236.3			
501+51.00 RT. TO 508+60.00 RT. (STAGE 1 & 2)		1418	236.3			
501+51.00 LT. TO 508+60.00 LT. (STAGE 1 & 2)		1418	236.3			
504+51.87 RT. TO 505+87.50 RT.		135.6	45.2	135.6		
504+51.87 LT. TO 505+87.50 LT.		135.6	45.2	135.6		
STOP BAR (2 LOCATIONS)			48			
SUB TOTAL:		3107	1132	271.2	1418	
TOTAL:	144	3107	1132	1689	473	

STATION TO STATION	WIDENING (SQ YD)
503+60.00, LT. TO 504+67.95, LT.	60
505+71.42, LT. TO 506+40.00, LT.	38
503+90.00, RT. TO 504+67.95, RT.	43
505+71.42, RT. TO 506+70.00, RT.	55
TOTAL:	196

NAME	DATE

ILLINOIS DEPARTMENT OF TRANSPORTATION
GENERAL SITE PLAN AND SCHEDULES
 F.A.P. RTE. 693
 SECTION (119B-3)I
 TAZEWELL COUNTY

SCALE: NONE
 DATE: 03/24/2006
 DRAWN BY: KBF
 CHECKED BY: AJE

REVISIONS
 -DATE-TIME-
 -CON-SPEC-
 -REF-