

F.A.I. RTE.	SECTION	COUNTY	TOTAL SHEETS	SHEET NO.
55	(32-3)PATCHING	GRUNDY	9	1

STATE OF ILLINOIS
DEPARTMENT OF TRANSPORTATION
DIVISION OF HIGHWAYS

**PROPOSED
HIGHWAY PLANS**

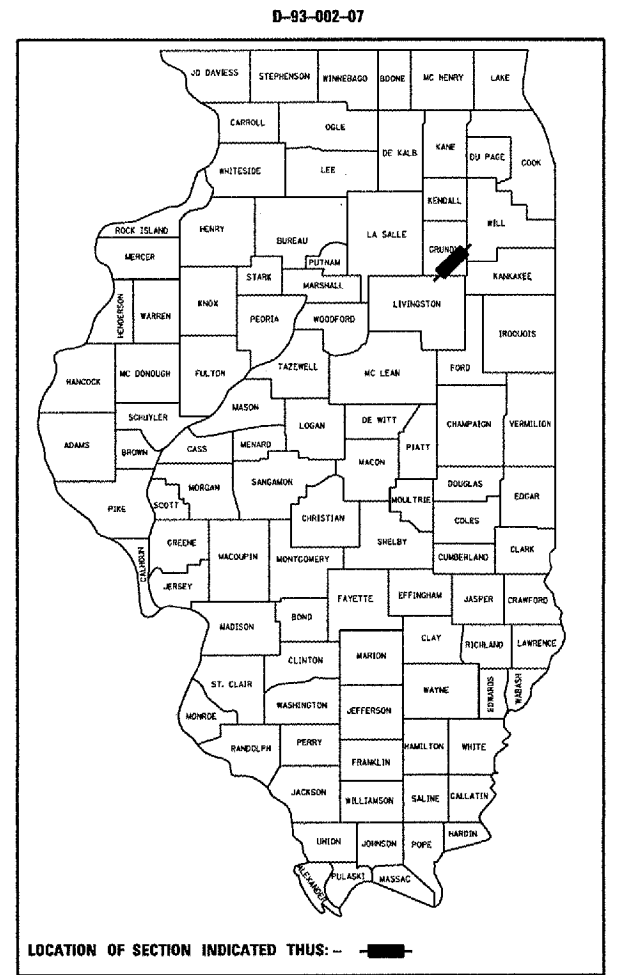
FAI ROUTE 55 (I-55)
SECTION (32-3)PATCHING
PROJECT
GRUNDY COUNTY
C-93-046-07
CLASS "A" PAVEMENT PATCHING

INDEX OF SHEETS

1. COVER SHEET
2. GENERAL NOTES
3. SUMMARY OF QUANTITIES
4. TYPICAL SECTIONS
5. SCHEDULES - CLASS A PATCHING NB
6. SCHEDULES - CLASS A PATCHING SB
7. SCHEDULES - PAVEMENT MARKING
8. CLASS A PATCHING DETAILS
9. PAVEMENT MARKING DETAILS

STANDARDS

- 000001-04 STANDARD SYMBOLS, ABBREVIATIONS AND PATTERNS
- 001001-01 AREAS OF REINFORCEMENT BARS
- 001006 DECIMAL OF AN INCH AND OF A FOOT
- 420001-06 PAVEMENT JOINTS
- 421001-01 BAR REINFORCEMENT FOR CRC PAVEMENT
- 442001-03 CLASS A PATCHES
- 701101-01 OFF-ROAD OPERATIONS MULTILANE, 4.5 m (15') TO 600 mm (24") FROM PAVEMENT EDGE
- 701106-01 OFF-ROAD OPERATIONS, MULTILANE, MORE THAN 4.5 m (15') AWAY
- 701400-02 APPROACH TO LANE CLOSURE, FREEWAY/EXPRESSWAY
- 701401-03 LANE CLOSURE, FREEWAY/EXPRESSWAY
- 701411-03 LANE CLOSURE, MULTILANE, AT ENTRANCE OR EXIT RAMP FOR SPEEDS P 45 MPH
- 701426-02 LANE CLOSURE, MULTILANE INTERMITTENT OR MOVING OPERATION, FOR SPEEDS P 45 MPH
- 702001-06 TRAFFIC CONTROL DEVICES



FUNCTIONAL CLASSIFICATION
RURAL - INTERSTATE
FAI ROUTE 55 (I-55)
2005 ADT = 20400
P.V = 69.1% M.U. = 26.5% S.U. = 4.4%

PROJECT BEGINS
LIVINGSTON COUNTY LINE
(M.P. 218.2)



PROJECT ENDS
1.38 MILES NORTH
OF IL ROUTE 47
(M.P. 221.20)

STATE OF ILLINOIS
DEPARTMENT OF TRANSPORTATION
DIVISION OF HIGHWAYS

SUBMITTED *April 2 2007*
George Ryan
DEPUTY DIRECTOR OF HIGHWAYS, REGION ENGINEER

May 11 2007
Edie S. Harn
ENGINEER OF DESIGN AND ENVIRONMENT

May 11 2007
Melton R. Seay
DIRECTOR OF HIGHWAYS, CHIEF ENGINEER

**PRINTED BY THE AUTHORITY
OF THE STATE OF ILLINOIS**

LOCATION MAP
NOT TO SCALE
GROSS LENGTH = 15840 FT. = 3.00 MI.
NET LENGTH = 1615 FT. = 0.31 MI

MICROFILMED _____
REEL NUMBER _____
AWARDED _____
RESIDENT ENGINEER _____
AS BUILT CHANGES WERE MADE
ON THE FOLLOWING SHEETS _____

J.U.L.I.E.
JOINT UTILITY LOCATION INFORMATION FOR EXCAVATION
1-800-892-0123

DISTRICT 3 NO. (815) 434-6131
PROJECT ENGINEER: JOE KANNEL
UNIT CHIEF: RON WOODSHANK
TOWNSHIP: VARIOUS

CONTRACT NO. 66708

Date: March 2, 2007
c:/projects/main08/cm305/details.dgn

F.A.I. RTE.	SECTION	COUNTY	TOTAL SHEETS	SHEET NO.
55	(32-3)PATCHING	GRUNDY	9	2

GENERAL NOTES

PLAN DIMENSIONS AND DETAILS RELATIVE TO EXISTING ROADWAY OR STRUCTURE HAVE BEEN TAKEN FROM EXISTING PLANS AND ARE SUBJECT TO NOMINAL CONSTRUCTION VARIATIONS. IT SHALL BE THE CONTRACTOR'S RESPONSIBILITY TO VERIFY SUCH DIMENSIONS AND DETAILS IN THE FIELD AND TO MAKE NECESSARY APPROVED ADJUSTMENTS PRIOR TO CONSTRUCTION OR ORDERING OF MATERIALS. SUCH VARIATIONS SHALL NOT BE CAUSE FOR ADDITIONAL COMPENSATION FOR A CHANGE IN THE SCOPE OF THE WORK, HOWEVER, THE CONTRACTOR WILL BE PAID FOR THE QUANTITY ACTUALLY FURNISHED AT THE UNIT BID FOR THE WORK.

FOR STABILIZATION, ALL TYPE III BARRICADES SHALL REQUIRE A MINIMUM OF FOUR SAND BAGS PER BARRICADE.

THE CONTRACTOR SHALL BE RESPONSIBLE FOR PROTECTING UTILITY PROPERTY FROM CONSTRUCTION OPERATIONS AS OUTLINED IN ARTICLE 107.31 OF THE STANDARD SPECIFICATIONS. THE "JULIE" NUMBER IS 1-800-892-0123. A MINIMUM OF FORTY-EIGHT (48) HOURS ADVANCE NOTICE IS REQUIRED.

WHERE SECTION OR SUBSECTION MONUMENTS ARE ENCOUNTERED, THE ENGINEER SHALL BE NOTIFIED BEFORE SUCH MONUMENTS ARE REMOVED. THE CONTRACTOR SHALL PROTECT AND CAREFULLY PRESERVE ALL MONUMENTS UNTIL AN AUTHORIZED SURVEYOR OR AGENT HAS WITNESSED OR OTHERWISE REFERENCED THEIR LOCATION. THE CONTRACTOR SHALL BE RESPONSIBLE FOR HAVING AN AUTHORIZED SURVEYOR REESTABLISH ANY SECTION OR SUBSECTION MONUMENTS DESTROYED BY HIS OPERATIONS.

ABANDONED UNDERGROUND UTILITIES THAT CONFLICT WITH CONSTRUCTION SHALL BE DISPOSED OF OUTSIDE THE LIMITS OF THE RIGHT OF WAY ACCORDING TO ARTICLE 202.03 OF THE STANDARD SPECIFICATIONS AND AS DIRECTED BY THE ENGINEER. THIS WORK WILL NOT BE PAID FOR SEPARATELY BUT SHALL BE INCLUDED IN THE COST OF CLASS A PATCHING.

THE THICKNESS OF BITUMINOUS MIXTURES SHOWN ON THE PLANS IS THE NOMINAL THICKNESS. DEVIATIONS FROM THE NOMINAL THICKNESS WILL BE PERMITTED WHEN SUCH DEVIATIONS OCCUR DUE TO IRREGULARITIES IN THE EXISTING SURFACE OR BASE ON WHICH THE BITUMINOUS MIXTURE IS PLACED.

ANY REFERENCE TO A STANDARD IN THESE PLANS SHALL BE INTERPRETED TO MEAN THE EDITION AS INDICATED BY THE SUBNUMBER LISTED ON THE INDEX OF SHEETS OR THE COPY OF THE STANDARD INCLUDED IN THESE PLANS.

THE EXISTING SHOULDERS ARE LOW. IN THE EVENT THAT CONSTRUCTION OPERATIONS RESULT IN A DROP OFF GREATER THAN 3" BETWEEN THE EDGE OF PAVEMENT OR EDGE OF SHOULDER WITHIN 3' OF THE EDGE OF PAVEMENT AND THE EARTH OR AGGREGATE SHOULDERS, THEN THE DROP OFF SHALL BE PROTECTED ACCORDING TO ARTICLE 701.04(B)(1) OF THE STANDARD SPECIFICATIONS. THIS WORK WILL BE CONSIDERED AS INCLUDED IN THE CONTRACT UNIT PRICES FOR TRAFFIC CONTROL.

ALL NEW REINFORCEMENT BARS SHALL BE "EPOXY COATED" EXCEPT AS SHOWN.

EXISTING REINFORCEMENT BARS EXTENDING INTO REMOVAL AREA SHALL BE CLEANED, STRAIGHTENED AND INCORPORATED INTO THE NEW CONSTRUCTION. ANY REINFORCEMENT BARS THAT ARE DAMAGED DURING CONCRETE REMOVAL SHALL BE REPLACED WITH AN APPROVED BAR SPLICER OR ANCHORAGE SYSTEM. COST INCLUDED WITH CONCRETE REMOVAL.

DATE: 4.2.07

PREPARED BY: Rick Powell
DISTRICT STUDIES & PLANS ENGINEER

EXAMINED BY: [Signature]
DISTRICT CONSTRUCTION ENGINEER

[Signature]
DISTRICT MATERIALS ENGINEER

[Signature]
DISTRICT OPERATIONS ENGINEER

REVISIONS		ILLINOIS DEPARTMENT OF TRANSPORTATION
NAME	DATE	
		GENERAL NOTES FAI ROUTE 55 (I-55) SECTION (32-3)PATCHING GRUNDY COUNTY

Date: March 2, 2007
c:/projects/cm1n08/cm305/details.dgn

F.A.I. RTE.	SECTION	COUNTY	TOTAL SHEETS	SHEET NO.
55	(32-3)PATCHING	GRUNDY	9	3

SUMMARY OF QUANTITIES

CONSTRUCTION CODE TYPE: **J000**

RURAL
100% STATE
TOTAL
QUANTITY

CODE NO.	ITEM	UNIT	TOTAL QUANTITY
44200541	CLASS A PATCHES, TYPE II, 9 INCH	SQ YD	429
44200545	CLASS A PATCHES, TYPE III, 9 INCH	SQ YD	44
44200547	CLASS A PATCHES, TYPE IV, 9 INCH	SQ YD	1680
44223000	PATCHING REINFORCEMENT	SQ YD	2153
44213000	SAW CUTS	FOOT	6398
67100100	MOBILIZATION	L SUM	1
70100420	TRAFFIC CONTROL AND PROTECTION, STANDARD 701411	EACH	4
70100800	TRAFFIC CONTROL AND PROTECTION, STANDARD 701401	L SUM	1
70103815	TRAFFIC CONTROL SURVEILLANCE	CAL DA	27
* 78008210	POLYUREA PAVEMENT MARKING TYPE I - LINE 4"	FOOT	1615
* 78008230	POLYUREA PAVEMENT MARKING TYPE I - LINE 6"	FOOT	1601
Z0075310	TIE BARS 3/4"	EACH	630

* SPECIALTY ITEM

Date: March 2, 2007
c:/projects/cmain08/cm305/details.dgn

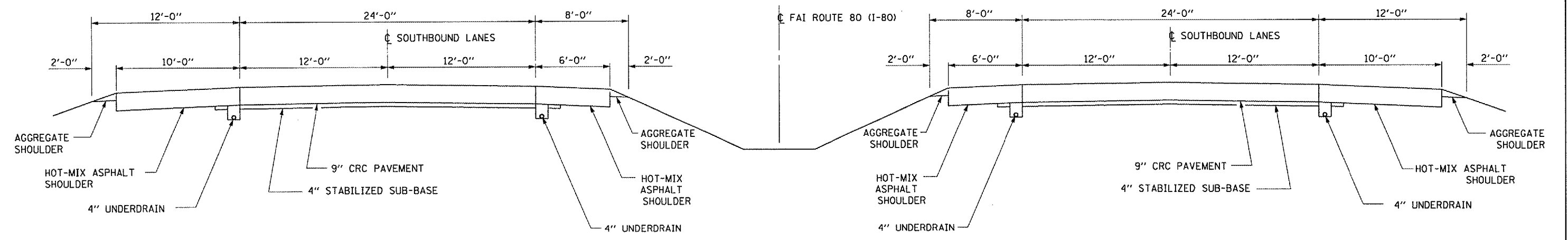
REVISIONS	
NAME	DATE

ILLINOIS DEPARTMENT OF TRANSPORTATION

GENERAL NOTES

FAI ROUTE 55 (I-55)
SECTION (32-3)PATCHING
GRUNDY COUNTY

F.A.I. RTE.	SECTION	COUNTY	TOTAL SHEETS	SHEET NO.
55	(32-3)PATCHING	GRUNDY	9	4



TYPICAL SECTIONS

Date: March 2, 2007
 c:/projects/cmain08/cm305/details.dgn

REVISIONS	
NAME	DATE

ILLINOIS DEPARTMENT OF TRANSPORTATION
TYPICAL SECTIONS
 FAI ROUTE 55 (I-55)
 SECTION (32-3)PATCHING
 GRUNDY COUNTY

F.A.I. RTE.	SECTION	COUNTY	TOTAL SHEETS	SHEET NO.
55	(32-3)PATCHING	GRUNDY	9	5

CLASS A PATCHING SCHEDULE

LOCATION		PASSING LANE						DRIVING LANE					
MILE POST	LANE	CLASS A PATCHING			PATCH REINF.	SAW CUTS FOOT	TIE BARS EACH	CLASS A PATCHING			PATCH REINF.	SAW CUTS FOOT	TIE BARS EACH
		TYPE II SQ YD	TYPE III SQ YD	TYPE IV SQ YD				TYPE II SQ YD	TYPE III SQ YD	TYPE IV SQ YD			
218.50	NB							8			8	60	
218.50	NB							8			8	60	
218.70	NB							11			11	64	
218.82	NB							13			13	68	
218.83	NB							13			13	68	
218.85	NB							8			8	60	
218.88	NB									27	27	88	10
218.89	NB									27	27	88	10
218.90	NB									27	27	88	10
218.90	NB							13			13	68	
218.92	NB							13			13	68	
218.93	NB	11			11	64		11			11	64	
218.95	NB								20		20	78	
218.97	NB								0	133	133	248	50
218.99	NB							13			13	68	
219.01	NB									67	67	148	25
219.05	NB							13			13	68	
219.06	NB							13			13	68	
219.07	NB									27	27	88	10
219.08	NB							13			13	68	
219.09	NB									27	27	88	10
219.09	NB							11			11	64	
219.10	NB							8			8	60	
219.60	NB									267	267	448	100
219.70	NB									133	133	248	50
219.75	NB							8			8	60	
219.78	NB								24		24	84	
219.79	NB							11			11	64	
219.81	NB									93	93	188	35
219.86	NB							8			8	60	
219.90	NB									40	40	108	15
219.96	NB									93	93	188	35
219.98	NB							13			13	68	
219.99	NB							13			13	68	
220.01	NB									93	93	188	35
220.03	NB							8			8	60	
220.04	NB							8			8	60	
220.06	NB							8			8	60	
220.07	NB									67	67	148	25
220.10	NB							13			13	68	
220.11	NB							13			13	68	
220.13	NB							11			11	64	
220.16	NB							13			13	68	
220.19	NB							13			13	68	
220.20	NB									27	27	88	10
220.35	NB									53	53	128	20
220.38	NB									40	40	108	15
220.39	NB							13			13	68	
220.40	NB									27	27	88	10
NB TOTALS		11			11	64		325	44	1267	1636	4806	475

Date: March 2, 2007
 c:/projects/main08/cm305/details.dgn

REVISIONS	
NAME	DATE

ILLINOIS DEPARTMENT OF TRANSPORTATION
SCHEDULES
 FAI ROUTE 55 (I-55)
 SECTION (32-3)PATCHING
 GRUNDY COUNTY

F.A.I. RTE.	SECTION	COUNTY	TOTAL SHEETS	SHEET NO.
55	(32-3)PATCHING	GRUNDY	9	6

CLASS A PATCHING SCHEDULE
 FAI 55 GRUNDY COUNTY
 LIVINGSTON COUNTY LINE TO M.P. 221

LOCATION		PASSING LANE						DRIVING LANE						
		CLASS A PATCHING			PATCH REINF.	SAW CUTS	TIE BARS	CLASS A PATCHING			PATCH REINF.	SAW CUTS	TIE BARS	
		TYPE II	TYPE III	TYPE IV				TYPE II	TYPE III	TYPE IV				
MILE POST	LANE	SQ YD	SQ YD	SQ YD	SQ YD	FOOT	EACH	SQ YD	SQ YD	SQ YD	SQ YD	FOOT	EACH	
220.60	SB							13				13	68	
220.52	SB	8			8	60		8				8	60	
220.15	SB	8			8	60								
219.25	SB									200	200	348	75	
219.01	SB									40	40	108	15	
219.00	SB			27	27	88	10							
219.99	SB							8				8	60	
219.98	SB							11				11	64	
218.70	SB							13				13	68	
218.65	SB									27	27	88	10	
218.60	SB							8				8	60	
218.58	SB									67	67	148	25	
218.55	SB	8			8	60								
218.50	SB			53	53	128	20							
218.25	SB							8				8	60	
SB TOTALS		24		80	104	396	30	69		333	403	1132	125	

Date: March 2, 2007
 c:\projects\main08\cm305\details.dgn

REVISIONS	
NAME	DATE

ILLINOIS DEPARTMENT OF TRANSPORTATION
SCHEDULES
 FAI ROUTE 55 (I-55)
 SECTION (32-3)PATCHING
 GRUNDY COUNTY

F.A.I. RTE.	SECTION	COUNTY	TOTAL SHEETS	SHEET NO.
55	(32-3)PATCHING	GRUNDY	9	7

PAVEMENT MARKING SCHEDULE

LOCATION		POLYUREA PAVEMENT MARKING TYPE 1, LINE 4"		POLYUREA PAVEMENT MARKING TYPE 1, LINE 6"
MILE POST	LANE	YELLOW	WHITE	WHITE
218.50	NB		6	6
218.50	NB		6	6
218.70	NB		8	8
218.82	NB		10	10
218.83	NB		10	10
218.85	NB		6	6
218.88	NB		20	20
218.89	NB		20	20
218.90	NB		20	20
218.90	NB		10	10
218.92	NB		10	10
218.93	NB	8	8	8
218.95	NB		15	15
218.97	NB		100	100
218.99	NB		10	10
219.01	NB		50	50
219.05	NB		10	10
219.06	NB		10	10
219.07	NB		20	20
219.08	NB		10	10
219.09	NB		20	20
219.09	NB		8	8
219.10	NB		6	6
219.60	NB		200	200
219.70	NB		100	100
219.75	NB		6	6
219.78	NB		18	18
219.79	NB		8	8
219.81	NB		70	70
219.86	NB		6	6
219.90	NB		30	30
219.96	NB		70	70
219.98	NB		10	10
219.99	NB		10	10
220.01	NB		70	70
220.03	NB		6	6
220.04	NB		6	6
220.06	NB		6	6
220.07	NB		50	50
220.10	NB		10	10
220.11	NB		10	10
220.13	NB		8	8
220.16	NB		10	10
220.19	NB		10	10
220.20	NB		20	20
220.35	NB		40	40
220.38	NB		30	30
220.39	NB		10	10
220.40	NB		20	20
SUBTOTALS		8	1227	1227
NB TOTALS			1235	1227

PAVEMENT MARKING SCHEDULE

LOCATION		POLYUREA PAVEMENT MARKING TYPE 1, LINE 4"		POLYUREA PAVEMENT MARKING TYPE 1, LINE 6"
MILE POST	LANE	YELLOW	WHITE	WHITE
220.60	SB		10	10
220.52	SB	6	6	6
220.15	SB	6		6
219.25	SB		150	150
219.01	SB		30	30
219.00	SB	20		20
219.99	SB		6	6
219.98	SB		8	8
218.70	SB		10	10
218.65	SB		20	20
218.60	SB		6	6
218.58	SB		50	50
218.55	SB	6		6
218.50	SB	40		40
218.25	SB		6	6
SUBTOTALS		78	302	374
SB TOTALS			380	374

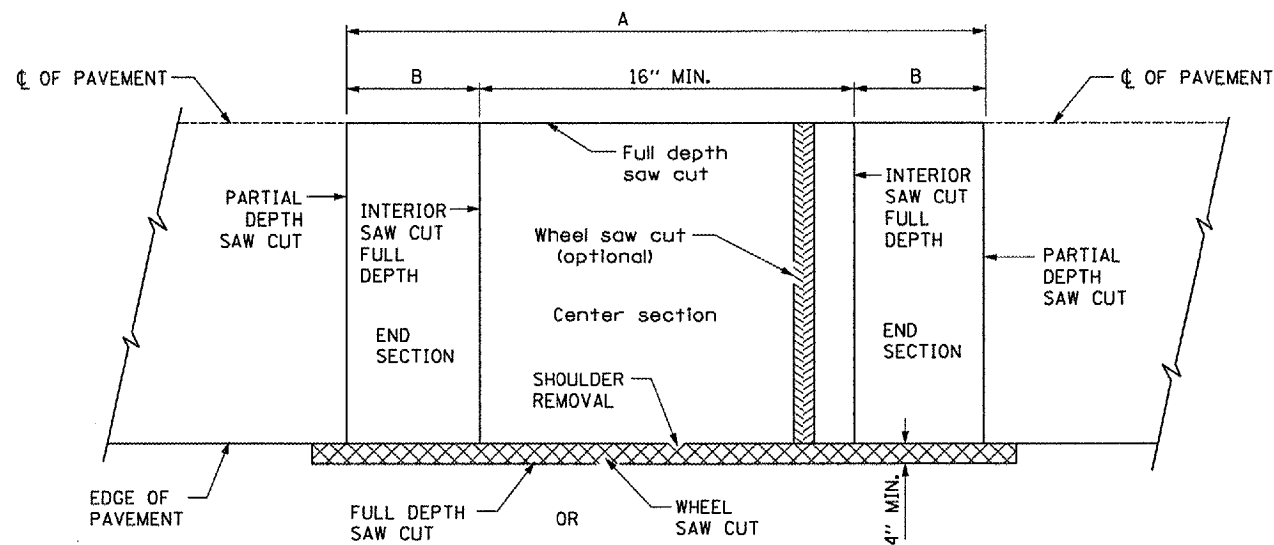
Date: March 2, 2007
c:/projects/main08/cm305/details.dgn

REVISIONS	
NAME	DATE

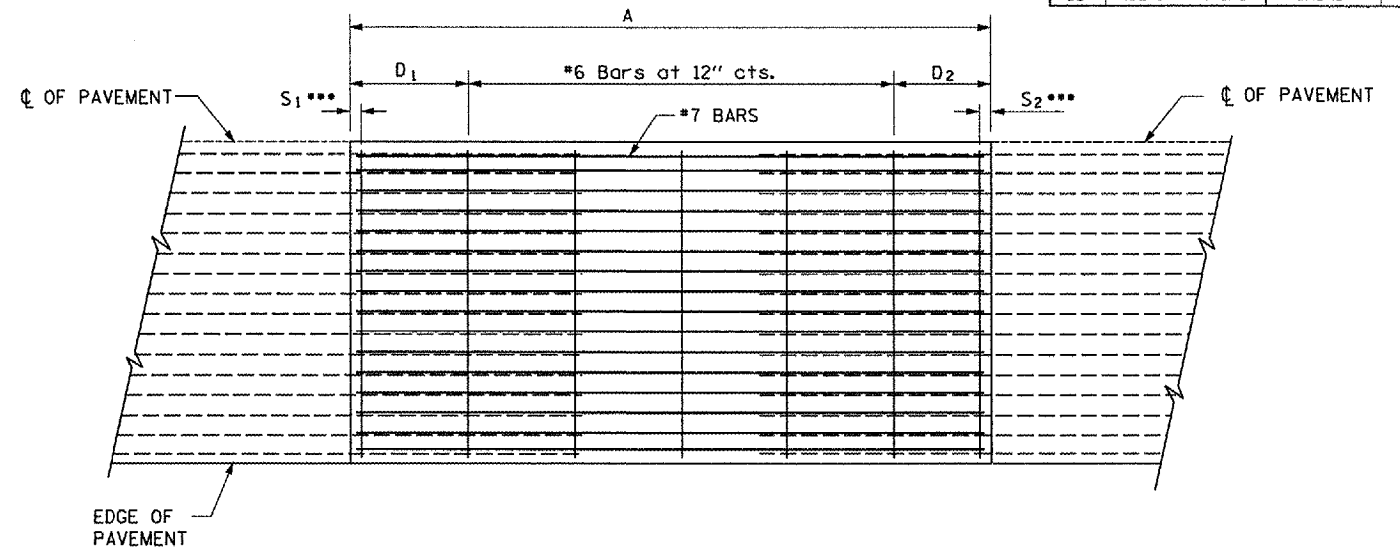
ILLINOIS DEPARTMENT OF TRANSPORTATION

GENERAL NOTES
 FAI ROUTE 55 (I-55)
 SECTION (32-3)PATCHING
 GRUNDY COUNTY

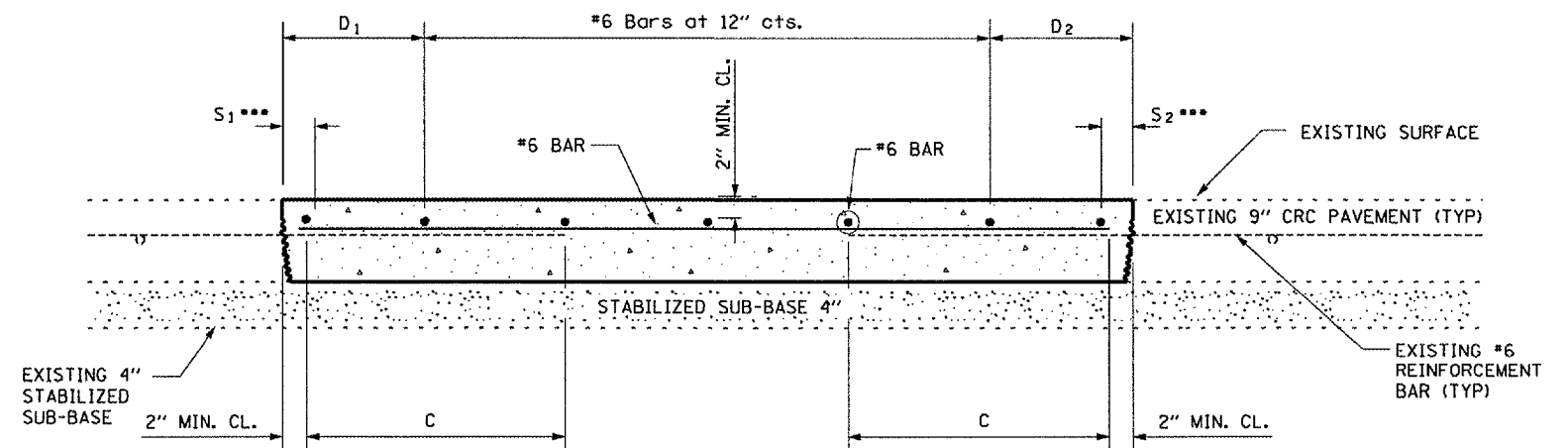
F.A.I. RTE.	SECTION	COUNTY	TOTAL SHEETS	SHEET NO.
55	(32-3)PATCHING	GRUNDY	9	8



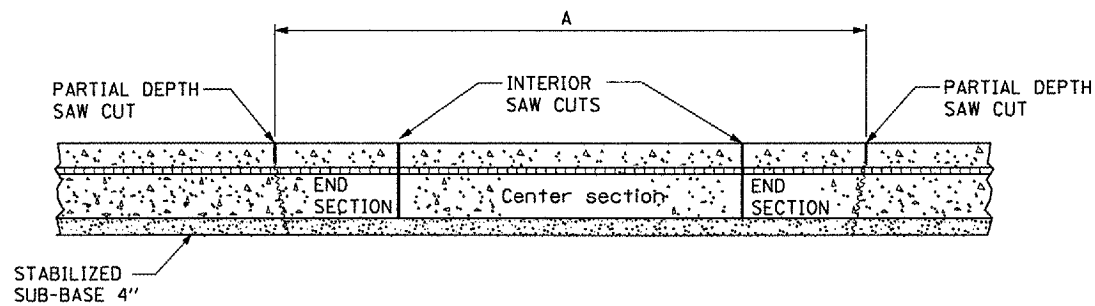
EXISTING PAVEMENT SAWING DETAIL
(AGAINST BITUMINOUS SHOULDER)



PROPOSED PAVEMENT DETAIL
(AGAINST CONCRETE SHOULDER)



PROPOSED CLASS A PATCHING DETAIL



REMOVAL DETAIL

EXISTING LONGITUDINAL REINFORCEMENT BARS	A (min.)	B (min.)	C (min.)
No. 6	6'-0"	21"	19"

NOTES:

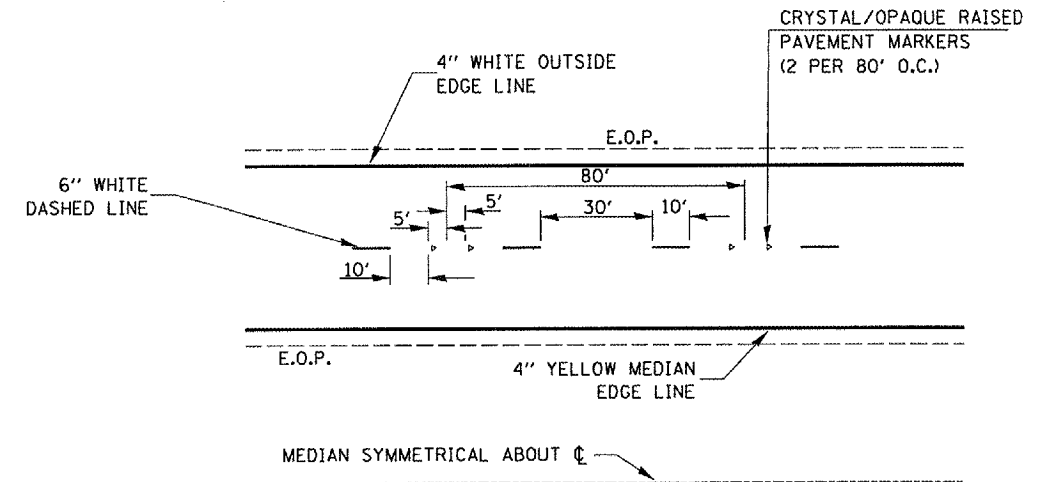
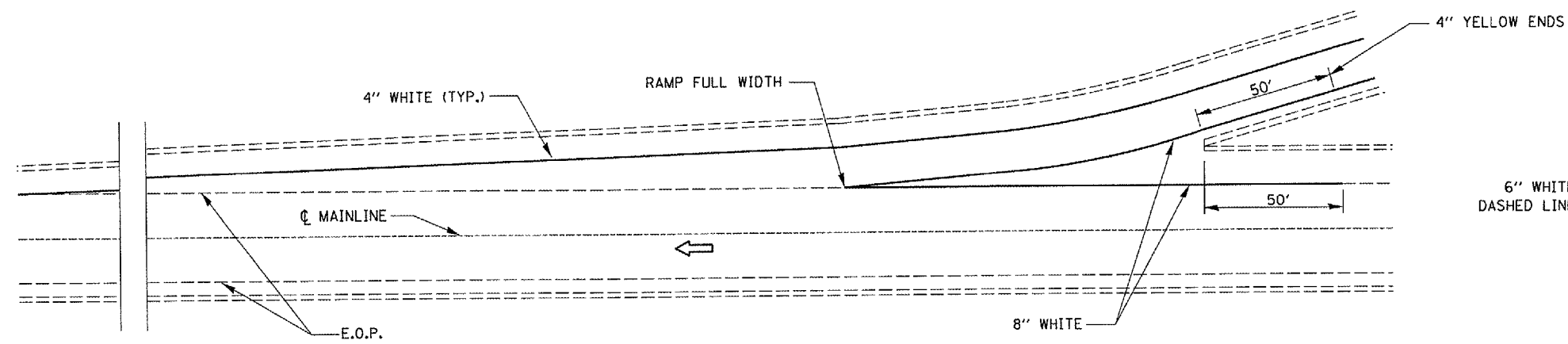
- EVERY 3rd INTERSECTION MUST BE TIED
- LAP NEW REINFORCEMENT WITH EXISTING LONGITUDINAL REINFORCEMENT
- VARIABLES: WHERE S₁ AND S₂ ARE 2 1/2" MIN. AND 12" MAX. D₁ = 2(S₁) AND D₂ = 2(S₂)

REVISIONS	
NAME	DATE

ILLINOIS DEPARTMENT OF TRANSPORTATION
CLASS A PATCHING DETAILS
FAI ROUTE 55 (I-55)
SECTION (32-3)PATCHING
GRUNDY COUNTY

Date: March 2, 2007
c:/projects/cmain08/cm305/details.dgn

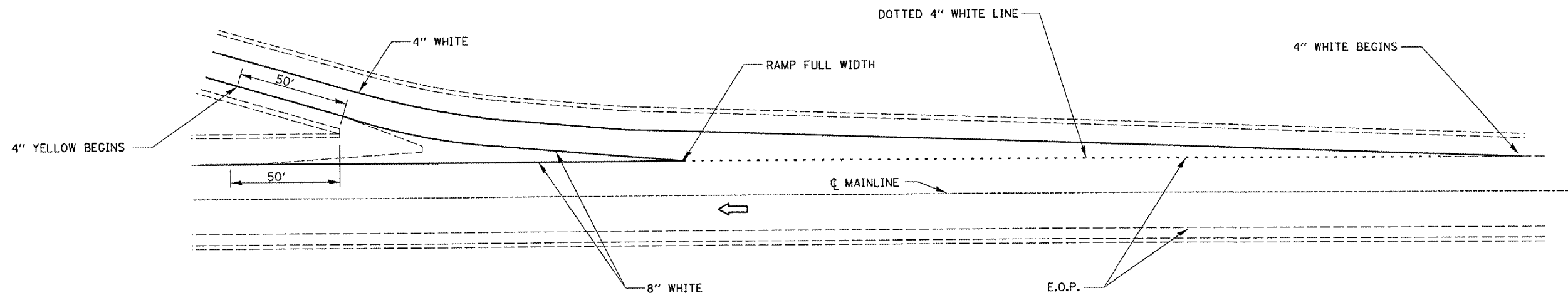
F.A.I. RTE.	SECTION	COUNTY	TOTAL SHEETS	SHEET NO.
55	(32-3)PATCHING	GRUNDY	9	9



TYPICAL PAVEMENT MARKING FOR ENTRANCE RAMP TERMINALS

TYPICAL PAVEMENT MARKINGS

NOTE:
 WHEN PATCHING IS ADJACENT TO 8" PAVEMENT MARKING LINE THE 8" STRIP SHALL BE REPLACED WITH TWO 4" LINES.
 RAISED REFLECTIVE PAVEMENT MARKERS THAT FALL WITHIN PATCHED BOUNDARIES WILL NOT BE REPLACED.



TYPICAL PAVEMENT MARKINGS FOR EXIT RAMP TERMINALS

REVISIONS	
NAME	DATE

ILLINOIS DEPARTMENT OF TRANSPORTATION
PAVEMENT MARKING DETAILS
 FAI ROUTE 55 (I-55)
 SECTION (32-3)PATCHING
 GRUNDY COUNTY

Date: March 2, 2007
 c:\projects\main08\cm305\details.dgn