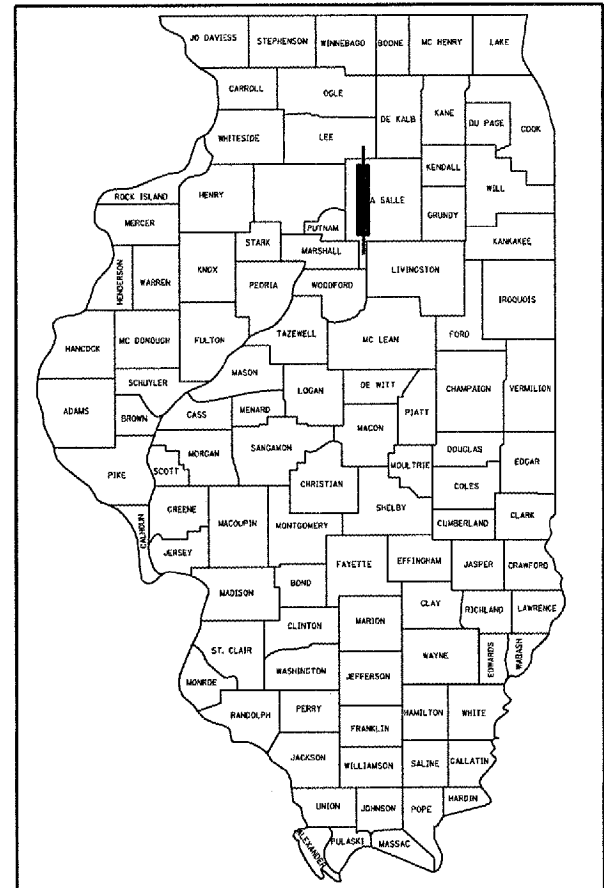


F.A.I. RTE.	SECTION	COUNTY	TOTAL SHEETS	SHEET NO.
39		LASALLE	16	1

\*50(1,2,3,4,5,6,7,8)PATCHING

D-93-002-07



LOCATION OF SECTION INDICATED THUS: - [shaded rectangle]

**FUNCTIONAL CLASSIFICATION**

RURAL INTERSTATE  
 F.A.I. ROUTE 39 (I-39)  
 2005 ADT = 20444  
 P.V = 60.6%    M.U. = 33.8%    S.U. = 5.6%

STATE OF ILLINOIS  
 DEPARTMENT OF TRANSPORTATION  
 DIVISION OF HIGHWAYS

SUBMITTED April 2, 2007  
George Ryan  
 DEPUTY DIRECTOR OF HIGHWAYS, REGION ENGINEER

May 11, 2007  
Eric E. Hann  
 INTERIM ENGINEER OF DESIGN AND ENVIRONMENT

May 11, 2007  
Milton R. Sees, P.E.  
 DIRECTOR OF HIGHWAYS, CHIEF ENGINEER

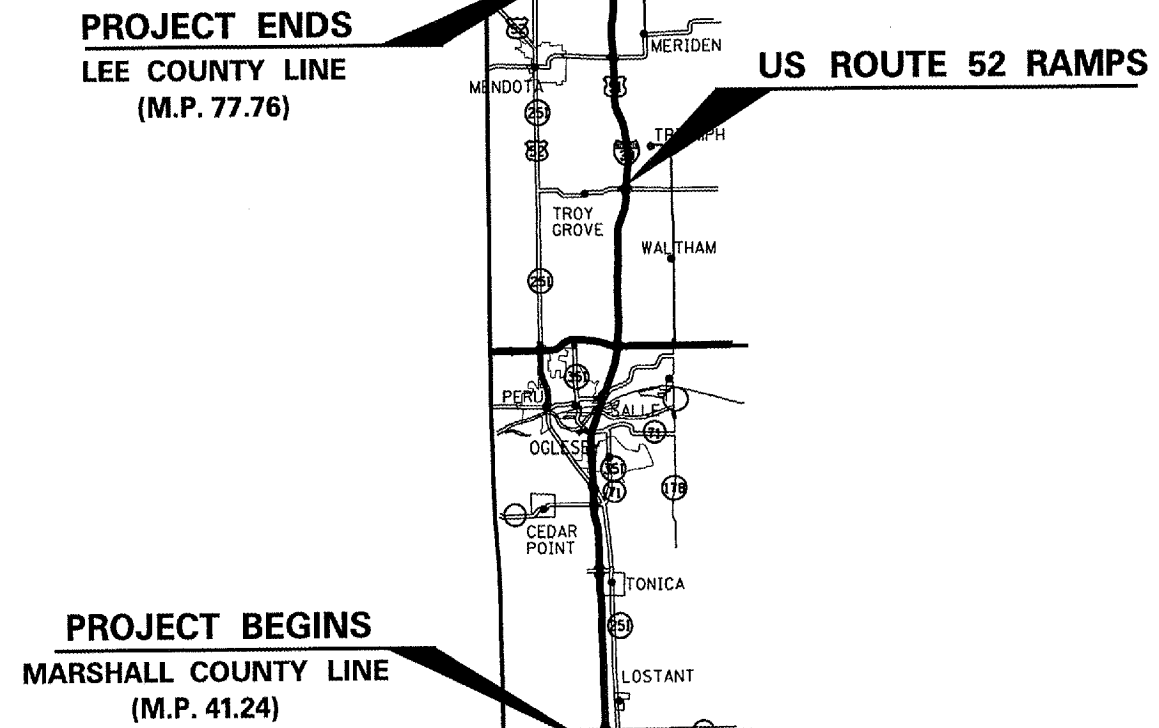
**PRINTED BY THE AUTHORITY  
 OF THE STATE OF ILLINOIS**

STATE OF ILLINOIS  
 DEPARTMENT OF TRANSPORTATION  
 DIVISION OF HIGHWAYS

**PROPOSED  
 HIGHWAY PLANS**

FAI ROUTE 39 (I-39)  
 SECTION 50(1,2,3,4,5,6,7,8)PATCHING

LASALLE COUNTY  
 C-93-045-07  
 PAVEMENT PATCHING



**LOCATION MAP**

NOT TO SCALE  
 GROSS LENGTH = 192826 FT. = 36.52 MI.  
 NET LENGTH = 1644 FT. = 0.31 MI.

**INDEX OF SHEETS**

1. COVER SHEET
2. GENERAL NOTES
3. SUMMARY OF QUANTITIES
4. TYPICAL SECTIONS
- 5 - 9. SCHEDULES
10. PAVEMENT DETAILS - RAMP "B"
11. PAVEMENT DETAILS - RAMP "D"
12. CLASS A PATCHING DETAILS
13. CLASS B PATCHING DETAILS
14. PAVEMENT MARKING DETAILS
- 15 - 16. TRAFFIC CONTROL FOR RAMPS

**STANDARDS**

- |           |   |
|-----------|---|
| 000001-04 | STANDARD SYMBOLS, ABBREVIATIONS AND PATTERNS                                  |
| 001001-01 | AREAS OF REINFORCEMENT BARS   |
| 001006    | DECIMAL OF AN INCH AND OF A FOOT  |
| 420001-06 | PAVEMENT JOINTS   |
| 420101-03 | 7.2 m (24') JOINTED PCC PAVEMENT  |
| 420701-01 | PAVEMENT FABRIC   |
| 421001-01 | BAR REINFORCEMENT FOR CRC PAVEMENT  |
| 421101-06 | 7.2 m (24') CRC PAVEMENT (WITH WIDE FLANGE BEAM TERMINAL JOINT)               |
| 442001-03 | CLASS A PATCHES   |
| 442101-06 | CLASS B PATCHES   |
| 701001-01 | OFF-ROAD OPERATIONS 2L, 2W, MORE THAN 4.5 m (15') AWAY                        |
| 701006-02 | OFF-ROAD OPERATIONS 2L, 2W, 4.5 m (15') TO 600 mm (24") FROM PAVEMENT EDGE    |
| 701101-01 | OFF-ROAD OPERATIONS MULTILANE, 4.5 m (15') TO 600 mm (24") FROM PAVEMENT EDGE |
| 701106-01 | OFF-ROAD OPERATIONS, MULTILANE, MORE THAN 4.5 m (15') AWAY                    |
| 701400-02 | APPROACH TO LANE CLOSURE, FREEWAY/EXPRESSWAY                                  |
| 701401-03 | LANE CLOSURE, FREEWAY/EXPRESSWAY  |
| 701411-03 | LANE CLOSURE, MULTILANE AT ENTRANCE OR EXIT RAMP FOR SPEEDS ≥ 45 MPH          |
| 701426-02 | LANE CLOSURE, MULTILANE INTERMITTENT OR MOVING OPERATION, FOR SPEEDS ≥ 45 MPH |
| 702001-06 | TRAFFIC CONTROL DEVICES   |

MICROFILMED \_\_\_\_\_  
 REEL NUMBER \_\_\_\_\_  
 AWARDED \_\_\_\_\_  
 RESIDENT ENGINEER \_\_\_\_\_  
 AS BUILT CHANGES WERE MADE  
 ON THE FOLLOWING SHEETS \_\_\_\_\_

J.U.L.I.E.  
 JOINT UTILITY LOCATION INFORMATION FOR EXCAVATION  
 1-800-892-0123

DISTRICT 3 NO. (815) 434-6131

PROJECT ENGINEER: JOE KANNEL  
 UNIT CHIEF: RON WOODSHANK  
 TOWNSHIP: VARIOUS

CONTRACT NO. 66707

Date: February 27, 2007  
 c:/projects/main08/cm304/details.dgn

F.A.I. RTE.	SECTION	COUNTY	TOTAL SHEETS	SHEET NO.
39	•	LASALLE	16	2

•50(1,2,3,4,5,6,7,8)PATCHING

**GENERAL NOTES**

PLAN DIMENSIONS AND DETAILS RELATIVE TO EXISTING ROADWAY OR STRUCTURE HAVE BEEN TAKEN FROM EXISTING PLANS AND ARE SUBJECT TO NOMINAL CONSTRUCTION VARIATIONS. IT SHALL BE THE CONTRACTOR'S RESPONSIBILITY TO VERIFY SUCH DIMENSIONS AND DETAILS IN THE FIELD AND TO MAKE NECESSARY APPROVED ADJUSTMENTS PRIOR TO CONSTRUCTION OR ORDERING OF MATERIALS. SUCH VARIATIONS SHALL NOT BE CAUSE FOR ADDITIONAL COMPENSATION FOR A CHANGE IN THE SCOPE OF THE WORK, HOWEVER, THE CONTRACTOR WILL BE PAID FOR THE QUANTITY ACTUALLY FURNISHED AT THE UNIT BID FOR THE WORK.

FOR STABILIZATION, ALL TYPE III BARRICADES SHALL REQUIRE A MINIMUM OF FOUR SAND BAGS PER BARRICADE.

THE CONTRACTOR SHALL BE RESPONSIBLE FOR PROTECTING UTILITY PROPERTY FROM CONSTRUCTION OPERATIONS AS OUTLINED IN ARTICLE 107.31 OF THE STANDARD SPECIFICATIONS. THE "JULIE" NUMBER IS 1-800-892-0123. A MINIMUM OF FORTY-EIGHT (48) HOURS ADVANCE NOTICE IS REQUIRED.

WHERE SECTION OR SUBSECTION MONUMENTS ARE ENCOUNTERED, THE ENGINEER SHALL BE NOTIFIED BEFORE SUCH MONUMENTS ARE REMOVED. THE CONTRACTOR SHALL PROTECT AND CAREFULLY PRESERVE ALL MONUMENTS UNTIL AN AUTHORIZED SURVEYOR OR AGENT HAS WITNESSED OR OTHERWISE REFERENCED THEIR LOCATION. THE CONTRACTOR SHALL BE RESPONSIBLE FOR HAVING AN AUTHORIZED SURVEYOR REESTABLISH ANY SECTION OR SUBSECTION MONUMENTS DESTROYED BY HIS OPERATIONS.

ABANDONED UNDERGROUND UTILITIES THAT CONFLICT WITH CONSTRUCTION SHALL BE DISPOSED OF OUTSIDE THE LIMITS OF THE RIGHT OF WAY ACCORDING TO ARTICLE 202.03 OF THE STANDARD SPECIFICATIONS AND AS DIRECTED BY THE ENGINEER. THIS WORK WILL NOT BE PAID FOR SEPARATELY BUT SHALL BE INCLUDED IN THE COST OF CLASS A PATCHING.

THE THICKNESS OF BITUMINOUS MIXTURES SHOWN ON THE PLANS IS THE NOMINAL THICKNESS. DEVIATIONS FROM THE NOMINAL THICKNESS WILL BE PERMITTED WHEN SUCH DEVIATIONS OCCUR DUE TO IRREGULARITIES IN THE EXISTING SURFACE OR BASE ON WHICH THE BITUMINOUS MIXTURE IS PLACED.

ANY REFERENCE TO A STANDARD IN THESE PLANS SHALL BE INTERPRETED TO MEAN THE EDITION AS INDICATED BY THE SUBNUMBER LISTED ON THE INDEX OF SHEETS OR THE COPY OF THE STANDARD INCLUDED IN THESE PLANS.

THE EXISTING SHOULDERS ARE LOW. IN THE EVENT THAT CONSTRUCTION OPERATIONS RESULT IN A DROP OFF GREATER THAN 3" BETWEEN THE EDGE OF PAVEMENT OR EDGE OF SHOULDER WITHIN 3' OF THE EDGE OF PAVEMENT AND THE EARTH OR AGGREGATE SHOULDERS, THEN THE DROP OFF SHALL BE PROTECTED ACCORDING TO ARTICLE 701.04(B)(1) OF THE STANDARD SPECIFICATIONS. THIS WORK WILL BE CONSIDERED AS INCLUDED IN THE CONTRACT UNIT PRICES FOR TRAFFIC CONTROL.

ALL NEW REINFORCEMENT BARS SHALL BE "EPOXY COATED" EXCEPT AS SHOWN.

EXISTING REINFORCEMENT BARS EXTENDING INTO REMOVAL AREA SHALL BE CLEANED, STRAIGHTENED AND INCORPORATED INTO THE NEW CONSTRUCTION. ANY REINFORCEMENT BARS THAT ARE DAMAGED DURING CONCRETE REMOVAL SHALL BE REPLACED WITH AN APPROVED BAR SPLICER OR ANCHORAGE SYSTEM. COST INCLUDED WITH CONCRETE REMOVAL.

DATE: 4.2.07  
 PREPARED BY: Rid Powell  
 DISTRICT STUDIES & PLANS ENGINEER  
 EXAMINED BY: [Signature]  
 DISTRICT CONSTRUCTION ENGINEER  
[Signature]  
 DISTRICT MATERIALS ENGINEER  
[Signature]  
 DISTRICT OPERATIONS ENGINEER

REVISIONS		ILLINOIS DEPARTMENT OF TRANSPORTATION
NAME	DATE	
		<b>GENERAL NOTES</b> FAI ROUTE 39 (I-39) SECTION 50(1,2,3,4,5,6,7,8)PATCHING LASALLE COUNTY

Date: February 27, 2007  
 c:\projects\cmain08\cm304\details.dgn

F.A.I. RTE.	SECTION	COUNTY	TOTAL SHEETS	SHEET NO.
39	*	LASALLE	16	3

\*50(1,2,3,4,5,6,7,8)PATCHING

# SUMMARY OF QUANTITIES

CONSTRUCTION CODE TYPE: **J000**

RURAL  
100% STATE  
TOTAL  
QUANTITY

CODE NO.	ITEM	UNIT	QUANTITY
42000501	PORTLAND CEMENT CONCRETE PAVEMENT 10" (JOINTED)	SQ YD	818
44000100	PAVEMENT REMOVAL	SQ YD	818
42001200	PAVEMENT FABRIC	SQ YD	818
44200553	CLASS A PATCHES, TYPE II, 10 INCH	SQ YD	178
44200559	CLASS A PATCHES, TYPE IV, 10 INCH	SQ YD	54
44200970	CLASS B PATCHES, TYPE II, 10 INCH	SQ YD	825
44200976	CLASS B PATCHES, TYPE IV, 10 INCH	SQ YD	120
44213000	PATCHING REINFORCEMENT	SQ YD	232
44213100	PAVEMENT FABRIC	SQ YD	945
44213200	SAW CUTS	FOOT	6210
67100100	MOBILIZATION	L SUM	1
70100420	TRAFFIC CONTROL AND PROTECTION, STANDARD 701411	EACH	40
70100800	TRAFFIC CONTROL AND PROTECTION, STANDARD 701401	L SUM	1
70103710	TRAFFIC CONTROL FOR RAMPS	L SUM	1
70103815	TRAFFIC CONTROL SURVEILLANCE	CAL DA	25
*78008210	POLYUREA PAVEMENT MARKING TYPE I - LINE 4"	FOOT	1644
*78008230	POLYUREA PAVEMENT MARKING TYPE I - LINE 6"	FOOT	150
*78008240	POLYUREA PAVEMENT MARKING TYPE I - LINE 8"	FOOT	136
*78008250	POLYUREA PAVEMENT MARKING TYPE I - LINE 12"	FOOT	52
Z0017202	DOWEL BARS 1 1/2"	EACH	2156
Z0075310	TIE BARS 3/4"	EACH	20

\*SPECIALTY ITEM

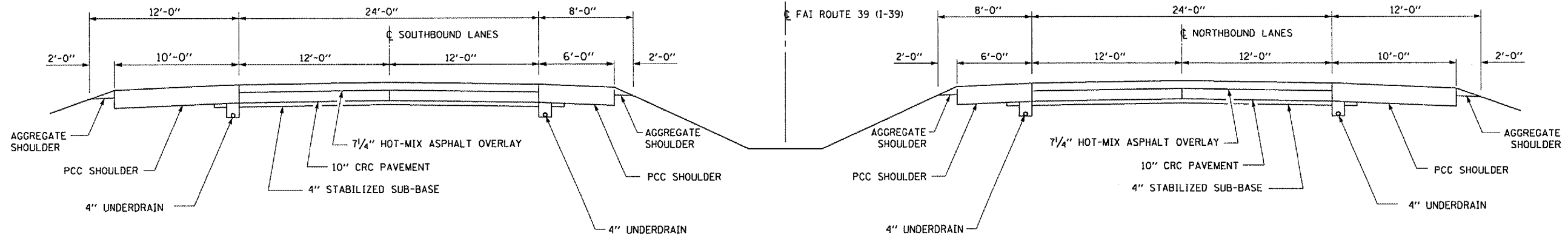
REVISIONS	
NAME	DATE

ILLINOIS DEPARTMENT OF TRANSPORTATION  
**SUMMARY OF QUANTITIES**  
FAI ROUTE 39 (I-39)  
SECTION 50(1,2,3,4,5,6,7,8)PATCHING  
LASALLE COUNTY

Date: February 27, 2007  
c:/projects/cmain08/cm304/details.dgn

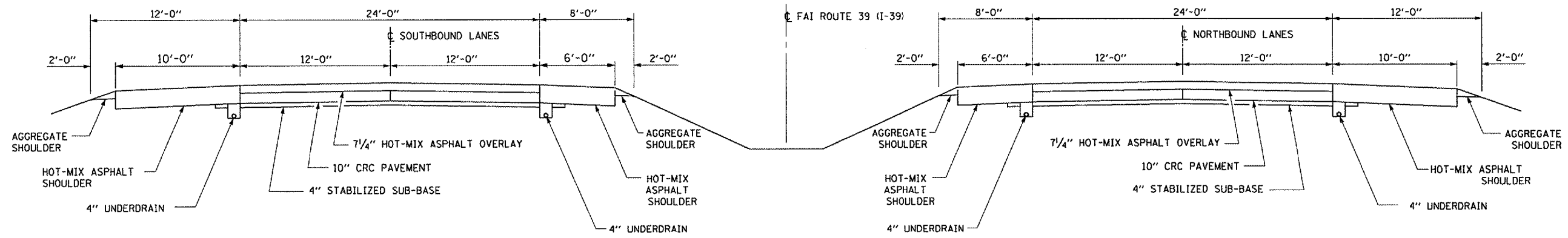
F.A.I. RTE.	SECTION	COUNTY	TOTAL SHEETS	SHEET NO.
39		LASALLE	16	4

\*50(1,2,3,4,5,6,7,8)PATCHING



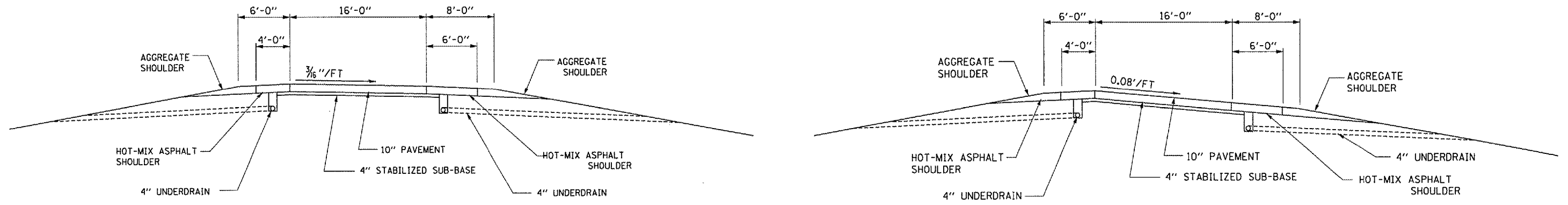
**TYPICAL SECTIONS**

M.P. 41.24 TO M.P. 55.36



**TYPICAL SECTIONS**

M.P. 55.36 TO M.P. 77.76



**TANGENT**

**SUPERELEVATION**

**TYPICAL SECTIONS**  
US 52 RAMPS

REVISIONS	
NAME	DATE

ILLINOIS DEPARTMENT OF TRANSPORTATION  
**TYPICAL SECTIONS**  
FAI ROUTE 39 (I-39)  
SECTION 50(1,2,3,4,5,6,7,8)PATCHING  
LASALLE COUNTY

Date: February 27, 2007  
c:/projects/main08/cm304/details.dgn

F.A.I. RTE.	SECTION	COUNTY	TOTAL SHEETS	SHEET NO.
39	•	LASALLE	16	5

\*50(1,2,3,4,5,6,7,8)PATCHING

CLASS A PATCHING SCHEDULE FAI 39 MAINLINE											
LOCATION		PASSING LANE					DRIVING LANE				
MILE POST	LANE	CLASS A PATCHING		PATCH REINF.	SAW CUTS	TIE BARS	CLASS A PATCHING		PATCH REINF.	SAW CUTS	TIE BARS
		TYPE II	TYPE IV				TYPE II	TYPE IV			
		SQ YD	SQ YD	SQ YD	FOOT	EACH	SQ YD	SQ YD	SQ YD	FOOT	EACH
CONCRETE SHOULDER SECTION											
48.20	NB						8		8	66	
56.60	NB						13		13	78	
SUBTOTAL							21		21	144	
BITUMINOUS SHOULDER SECTION											
67.10	NB						8		8	60	
67.30	NB		27	27	88	10					
75.50	NB						13		13	68	
SUBTOTAL			27	27	88	10	21		21	128	
NB TOTALS			27	27	88	10	42		42	272	

CLASS A PATCHING SCHEDULE FAI 39 MAINLINE											
LOCATION		PASSING LANE					DRIVING LANE				
MILE POST	LANE	CLASS A PATCHING		PATCH REINF.	SAW CUTS	TIE BARS	CLASS A PATCHING		PATCH REINF.	SAW CUTS	TIE BARS
		TYPE II	TYPE IV				TYPE II	TYPE IV			
		SQ YD	SQ YD	SQ YD	FOOT	EACH	SQ YD	SQ YD	SQ YD	FOOT	EACH
BITUMINOUS SHOULDER SECTION											
74.10	SB							27	27	88	10
71.70	SB						8		8	60	
70.90	SB						8		8	60	
67.30	SB	8		8	60		8		8	60	
67.20	SB	8		8	60		8		8	60	
66.85	SB						8		8	60	
SUBTOTAL		16		16	120		40	27	67	388	10
CONCRETE SHOULDER SECTION											
54.40	SB						13		13	78	
54.20	SB						8		8	66	
52.70	SB	8		8	66		8		8	66	
52.50	SB						8		8	66	
47.95	SB	8		8	66		8		8	66	
42.50	SB						8		8	66	
42.30	SB						11		11	72	
SUBTOTAL		16		16	132		64		64	480	
SB TOTALS		32		32	252		104	27	131	868	10

REVISIONS	
NAME	DATE

ILLINOIS DEPARTMENT OF TRANSPORTATION  
**SCHEDULES**  
FAI ROUTE 39 (I-39)  
SECTION 50(1,2,3,4,5,6,7,8)PATCHING  
LASALLE COUNTY

Date: February 27, 2007  
c:\projects\main08\cm304\details.dgn

F.A.I. RTE.	SECTION	COUNTY	TOTAL SHEETS	SHEET NO.
39		LASALLE	16	6

\*50(1,2,3,4,5,6,7,8)PATCHING

CLASS B PATCHING SCHEDULE				
NORTHBOUND OFF RAMP (RAMP "C")				
LOCATION BY STATION	TYPE II	DOWEL BARS	SAW CUTS	PAVE'T FABRIC
	SQ YD	EACH	FOOT	SQ YD
EXPANSION JOINT AT GORE AREA ADJACENT TO I-39 MAINLINE				
STA. 504+00				
STA. 504+99	11	28	60	11
STA. 505+54	11	28	60	11
STA. 505+91	11	28	60	11
STA. 506+74	11	28	60	11
STA. 507+64	11	28	60	11
STA. 508+18	11	28	60	11
STA. 509+03	11	28	60	11
STA. 510+98	11	28	60	11
STA. 512+08	11	28	60	11
STA. 513+99	11	28	60	11
STA. 514+93	11	28	60	11
STA. 515+52	11	28	60	11
STA. 516+00	11	28	60	11
STA. 516+98	11	28	60	11
STA. 518+91	11	28	60	11
STA. 519+38	11	28	60	11
STA. 520+30	11	28	60	11
STA. 521+46	11	28	60	11
STA. 521+78	11	28	60	11
STA. 522+56	TOP OF RAMP EOP ADJACENT TO US 52 MAINLINE			
TOTAL	209	532	1140	209

CLASS B PATCHING SCHEDULE				
NORTHBOUND ON RAMP (RAMP "B")				
LOCATION BY STATION	TYPE II	DOWEL BARS	SAW CUTS	PAVE'T FABRIC
	SQ YD	EACH	FOOT	SQ YD
TOP OF RAMP EOP ADJACENT TO US 52 MAINLINE				
STA. 400+23				
STA. 401+77	11	28	60	11
STA. 402+25	11	28	60	11
STA. 402+71	11	28	60	11
STA. 403+18	11	28	60	11
STA. 404+22	11	28	60	11
STA. 404+71	11	28	60	11
STA. 404+85	11	28	60	11
STA. 405+19	11	28	60	11
STA. 405+74	11	28	60	11
STA. 406+33	11	28	60	11
STA. 407+31	11	28	60	11
STA. 407+76	11	28	60	11
STA. 408+13	11	28	60	11
STA. 409+83	11	28	60	11
STA. 411+19	11	28	60	11
STA. 411+81	11	28	60	11
STA. 412+19	11	28	60	11
STA. 412+65	11	28	60	11
STA. 413+32	11	28	60	11
STA. 413+73	11	28	60	11
STA. 414+46	11	28	60	11
STA. 415+65	11	28	60	11
STA. 416+67	EXPANSION JOINT AT GORE AREA ADJACENT TO I-39 MAINLINE			
TOTAL	242	616	1320	242

PORTLAND CEMENT CONCRETE PAVEMENT SCHEDULE			
NORTHBOUND ON RAMP (RAMP "B")			
LOCATION BY STATION	PAVEMENT REMOVAL	PCC PAVEMENT 10" (JOINTED)	PAVE'T FABRIC
	SQ YD	SQ YD	SQ YD
STA. 0+00 TOP OF RAMP PAVEMENT ADJACENT TO US 52 MAINLINE			
STA. 400+23 TO STA. 401+27	409	409	409
STA. 1+37 BEGINNING OF 16' WIDTH PAVEMENT			
TOTAL	409	409	409

REVISIONS	
NAME	DATE

ILLINOIS DEPARTMENT OF TRANSPORTATION  
**SCHEDULES**  
 FAI ROUTE 39 (I-39)  
 SECTION 50(1,2,3,4,5,6,7,8)PATCHING  
 LASALLE COUNTY

Date: February 27, 2007  
 c:/projects/main08/cm304/details.dgn

F.A.I. RTE.	SECTION	COUNTY	TOTAL SHEETS	SHEET NO.
39		LASALLE	16	7

\*50(1,2,3,4,5,6,7,8)PATCHING

CLASS B PATCHING SCHEDULE					
SOUTHBOUND OFF RAMP (RAMP "A")					
LOCATION BY STATION		TYPE II	DOWEL BARS	SAW CUTS	PAVE'T FABRIC
		SQ YD	EACH	FOOT	SQ YD
EXPANSION JOINT AT GORE AREA ADJACENT TO I-39 MAINLINE					
STA.	303+88				
STA.	304+03	11	28	60	11
STA.	304+18	11	28	60	11
STA.	304+58	11	28	60	11
STA.	305+06	11	28	60	11
STA.	306+00	11	28	60	11
STA.	307+00	11	28	60	11
STA.	307+88	11	28	60	11
STA.	308+42	11	28	60	11
STA.	308+82	11	28	60	11
STA.	310+84	11	28	60	11
STA.	311+78	11	28	60	11
STA.	313+35	11	28	60	11
STA.	313+72	11	28	60	11
STA.	315+70	11	28	60	11
STA.	316+34	11	28	60	11
STA.	318+83	11	28	60	11
STA.	319+36	11	28	60	11
STA.	320+36	11	28	60	11
STA.	321+11	11	28	60	11
STA.	321+52	11	28	60	11
STA.	321+82	11	28	60	11
STA.	321+98	11	28	60	11
STA.	323+19	11	28	60	11
STA.	322+70				
TOTAL		253	644	1380	253

CLASS B PATCHING SCHEDULE						
SOUTHBOUND ON RAMP (RAMP "D")						
LOCATION BY STATION		TYPE II	TYPE II	DOWEL BARS	SAW CUTS	PAVE'T FABRIC
		SQ YD	SQ YD	EACH	FOOT	SQ YD
TOP OF RAMP EOP ADJACENT TO US 52 MAINLINE						
STA.	600+23					
STA.	601+16	11		28	60	11
STA.	601+75	11		28	60	11
STA.	602+27	11		28	60	11
STA.	602+69	11		28	60	11
STA.	603+21		36	28	88	
STA.	604+24	11		28	60	11
STA.	604+65	11		28	60	11
STA.	605+21		84	28	142	
STA.	606+18	11		28	60	11
STA.	608+15	11		28	60	11
STA.	610+23	11		28	60	11
STA.	611+66	11		28	60	11
STA.	614+20	11		28	60	11
STA.	616+83					
EXPANSION JOINT AT GORE AREA ADJACENT TO I-39 MAINLINE						
TOTAL		121	120	364	890	241

PORTLAND CEMENT CONCRETE PAVEMENT SCHEDULE			
SOUTHBOUND ON RAMP (RAMP "D")			
LOCATION BY STATION	PAVEMENT REMOVAL	PCC PAVEMENT 10" (JOINTED)	PAVE'T FABRIC
	SQ YD	SQ YD	SQ YD
TOP OF RAMP PAVEMENT ADJACENT TO US 52 MAINLINE			
STA. 0+00			
STA. 600+23 TO STA. 601+27	409	409	409
STA. 1+37	BEGINNING OF 16' WIDTH PAVEMENT		
TOTAL	409	409	409

Date: February 27, 2007  
 c:/projects/cm01n08/cm304/details.dgn

REVISIONS	
NAME	DATE

ILLINOIS DEPARTMENT OF TRANSPORTATION  
**SCHEDULES**  
 FAI ROUTE 39 (I-39)  
 SECTION 50(1,2,3,4,5,6,7,8)PATCHING  
 LASALLE COUNTY

F.A.I. RTE.	SECTION	COUNTY	TOTAL SHEETS	SHEET NO.
39	•	LASALLE	16	8

\*50(1,2,3,4,5,6,7,8)PATCHING

CLASS B PATCHING SCHEDULE					
LOCATION BY STATION		SOUTHBOUND OFF RAMP (RAMP "A")			
		TYPE II	DOWEL BARS	SAW CUTS	PAVE'T FABRIC
		SQ YD	EACH	FOOT	SQ YD
EXPANSION JOINT AT GORE AREA ADJACENT TO I-39 MAINLINE					
STA.	303+88				
STA.	304+03	11	28	60	11
STA.	304+18	11	28	60	11
STA.	304+58	11	28	60	11
STA.	305+06	11	28	60	11
STA.	306+00	11	28	60	11
STA.	307+00	11	28	60	11
STA.	307+88	11	28	60	11
STA.	308+42	11	28	60	11
STA.	308+82	11	28	60	11
STA.	310+84	11	28	60	11
STA.	311+78	11	28	60	11
STA.	313+35	11	28	60	11
STA.	313+72	11	28	60	11
STA.	315+70	11	28	60	11
STA.	316+34	11	28	60	11
STA.	318+83	11	28	60	11
STA.	319+36	11	28	60	11
STA.	320+36	11	28	60	11
STA.	321+11	11	28	60	11
STA.	321+52	11	28	60	11
STA.	321+82	11	28	60	11
STA.	321+98	11	28	60	11
STA.	323+19	11	28	60	11
STA.	322+70				
TOP OF RAMP EOP ADJACENT TO US 52 MAINLINE					
TOTAL		253	644	1380	253

CLASS B PATCHING SCHEDULE						
LOCATION BY STATION		SOUTHBOUND ON RAMP (RAMP "D")				
		TYPE II	TYPE II	DOWEL BARS	SAW CUTS	PAVE'T FABRIC
		SQ YD	SQ YD	EACH	FOOT	SQ YD
TOP OF RAMP EOP ADJACENT TO US 52 MAINLINE						
STA.	600+23					
STA.	601+16	11		28	60	
STA.	601+75	11		28	60	
STA.	602+27	11		28	60	
STA.	602+69	11		28	60	
STA.	603+21		36	28	88	
STA.	604+24	11		28	60	
STA.	604+65	11		28	60	
STA.	605+21		84	28	142	
STA.	606+18	11		28	60	
STA.	608+15	11		28	60	
STA.	610+23	11		28	60	
STA.	611+66	11		28	60	
STA.	614+20	11		28	60	
STA.	616+83					
EXPANSION JOINT AT GORE AREA ADJACENT TO I-39 MAINLINE						
TOTAL		121	120	364	890	

PORTLAND CEMENT CONCRETE PAVEMENT SCHEDULE				
LOCATION BY STATION		SOUTHBOUND ON RAMP (RAMP "D")		
		PAVEMENT REMOVAL	PCC PAVEMENT 10" (JOINTED)	PAVE'T FABRIC
		SQ YD	SQ YD	SQ YD
STA. 0+00 TOP OF RAMP PAVEMENT ADJACENT TO US 52 MAINLINE				
STA. 600+23 TO STA. 601+27		409	409	409
STA. 1+37		BEGINNING OF 16' WIDTH PAVEMENT		
TOTAL		409	409	409

Date: February 27, 2007  
c:/projects/cmain08/cm304/details.dgn

REVISIONS	
NAME	DATE

ILLINOIS DEPARTMENT OF TRANSPORTATION  
**SCHEDULES**  
FAI ROUTE 39 (I-39)  
SECTION 50(1,2,3,4,5,6,7,8)PATCHING  
LASALLE COUNTY



F.A.I. RTE.	SECTION	COUNTY	TOTAL SHEETS	SHEET NO.
39	•	LASALLE	16	9

\*50(1,2,3,4,5,6,7,8)PATCHING

PAVEMENT MARKING SCHEDULE

LOCATION		POLYUREA PAVEMENT MARKING TYPE 1, LINE 4"		POLYUREA PAVEMENT MARKING TYPE 1, LINE 6"	POLYUREA PAVEMENT MARKING TYPE 1, LINE 8"	POLYUREA PAVEMENT MARKING TYPE 1, LINE 12"
MILE POST	LANE	YELLOW	WHITE	WHITE	WHITE	WHITE
NB MAINLINE		20	32	52		
SB MAINLINE		24	98	98		
NB OFF RAMP (RAMP "C")		114	114			
NB ON RAMP (RAMP "B")		242	242		68	26
SB OFF RAMP (RAMP "A")		138	138			
SB ON RAMP (RAMP "D")		241	241		68	26
SUBTOTAL		779	865	150	136	52
SB TOTALS		1644		150	136	52

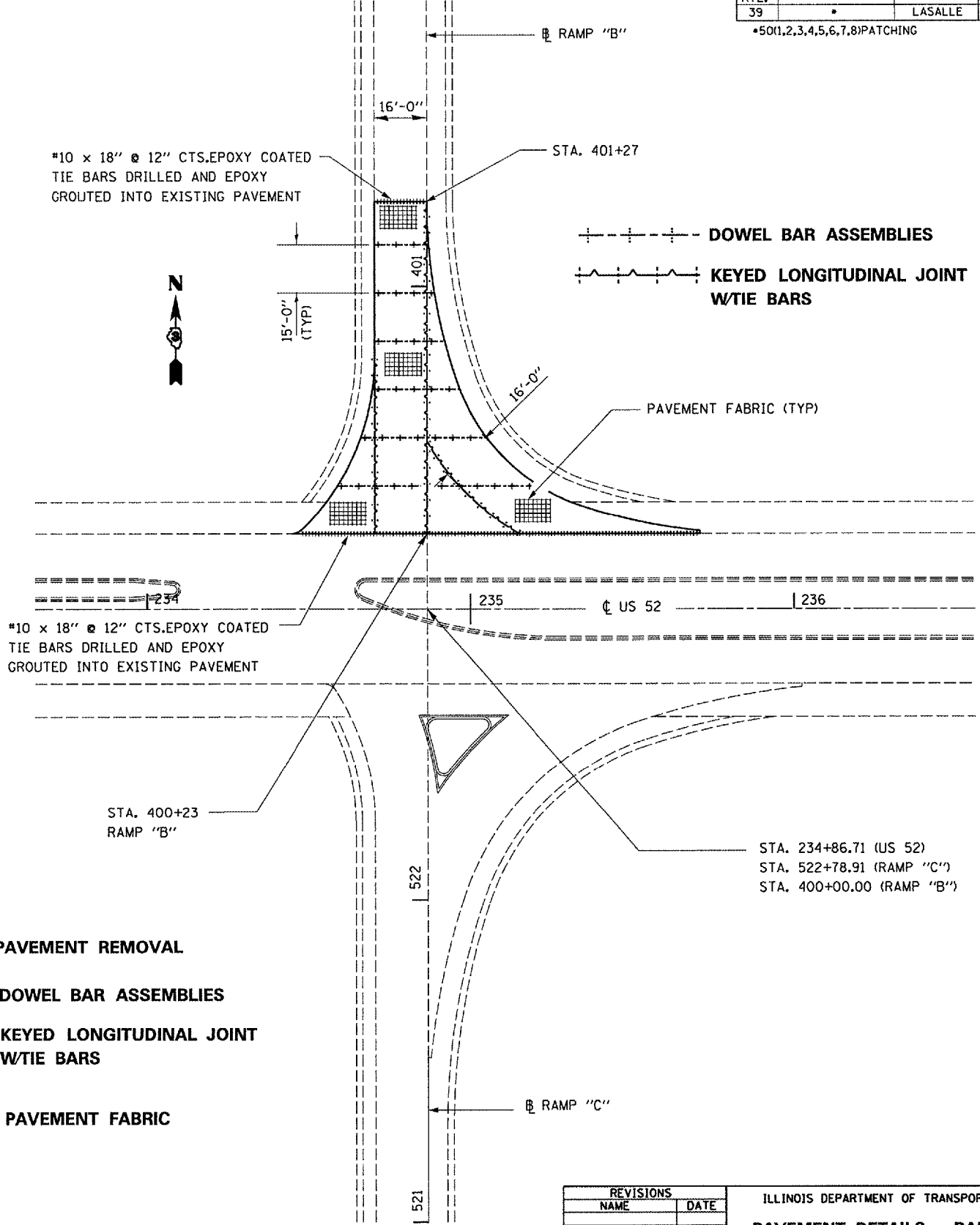
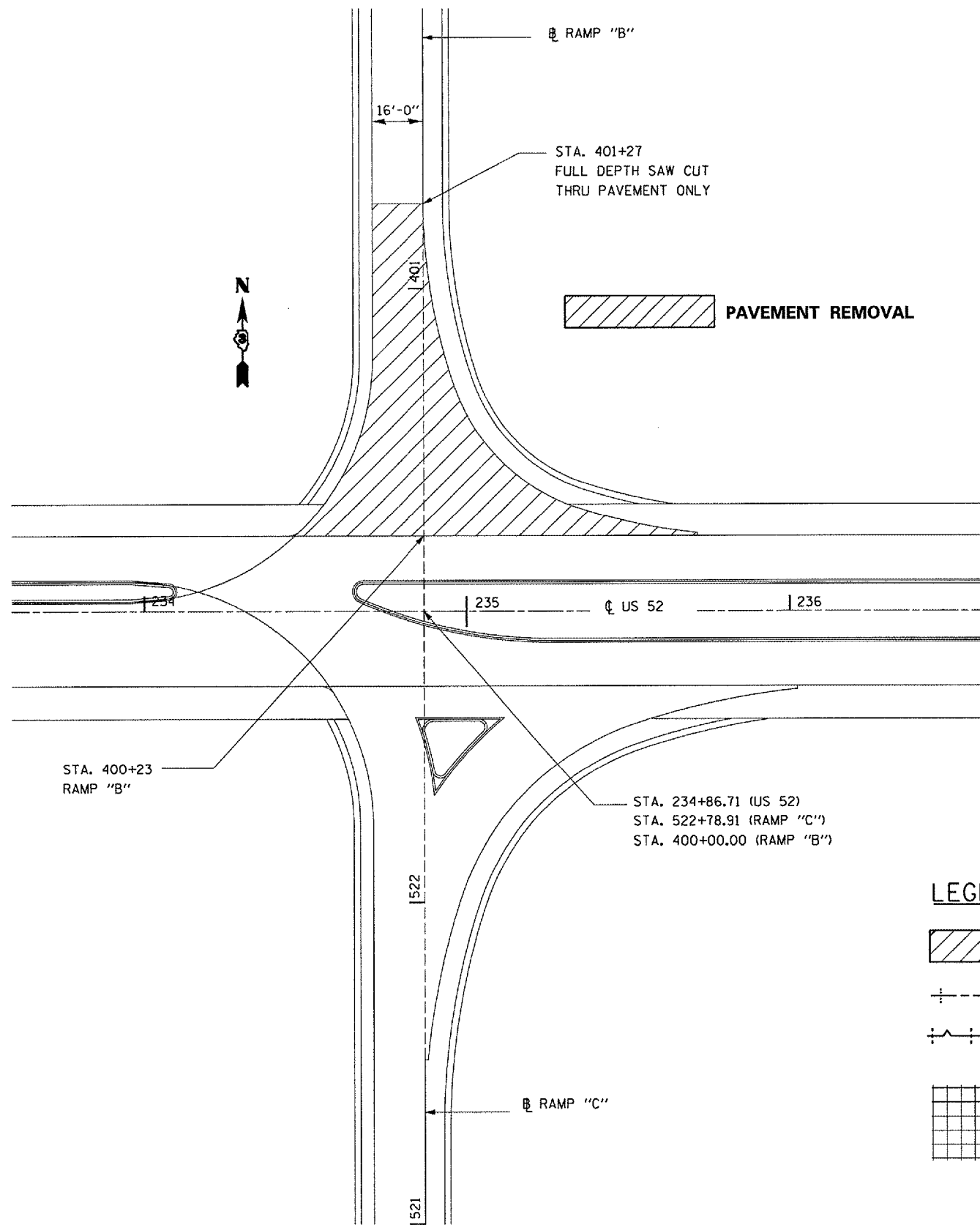
Date: February 27, 2007  
 c:/projects/cmain08/cm304/details.dgn

REVISIONS	
NAME	DATE

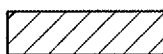
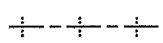
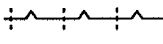
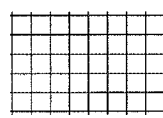
ILLINOIS DEPARTMENT OF TRANSPORTATION  
**SCHEDULES**  
 FAI ROUTE 39 (I-39)  
 SECTION 50(1,2,3,4,5,6,7,8)PATCHING  
 LASALLE COUNTY

F.A.I. RTE.	SECTION	COUNTY	TOTAL SHEETS	SHEET NO.
39		LASALLE	16	10

\*50(1,2,3,4,5,6,7,8)PATCHING



**LEGEND**

-  PAVEMENT REMOVAL
-  DOWEL BAR ASSEMBLIES
-  KEYED LONGITUDINAL JOINT W/TIE BARS
-  PAVEMENT FABRIC

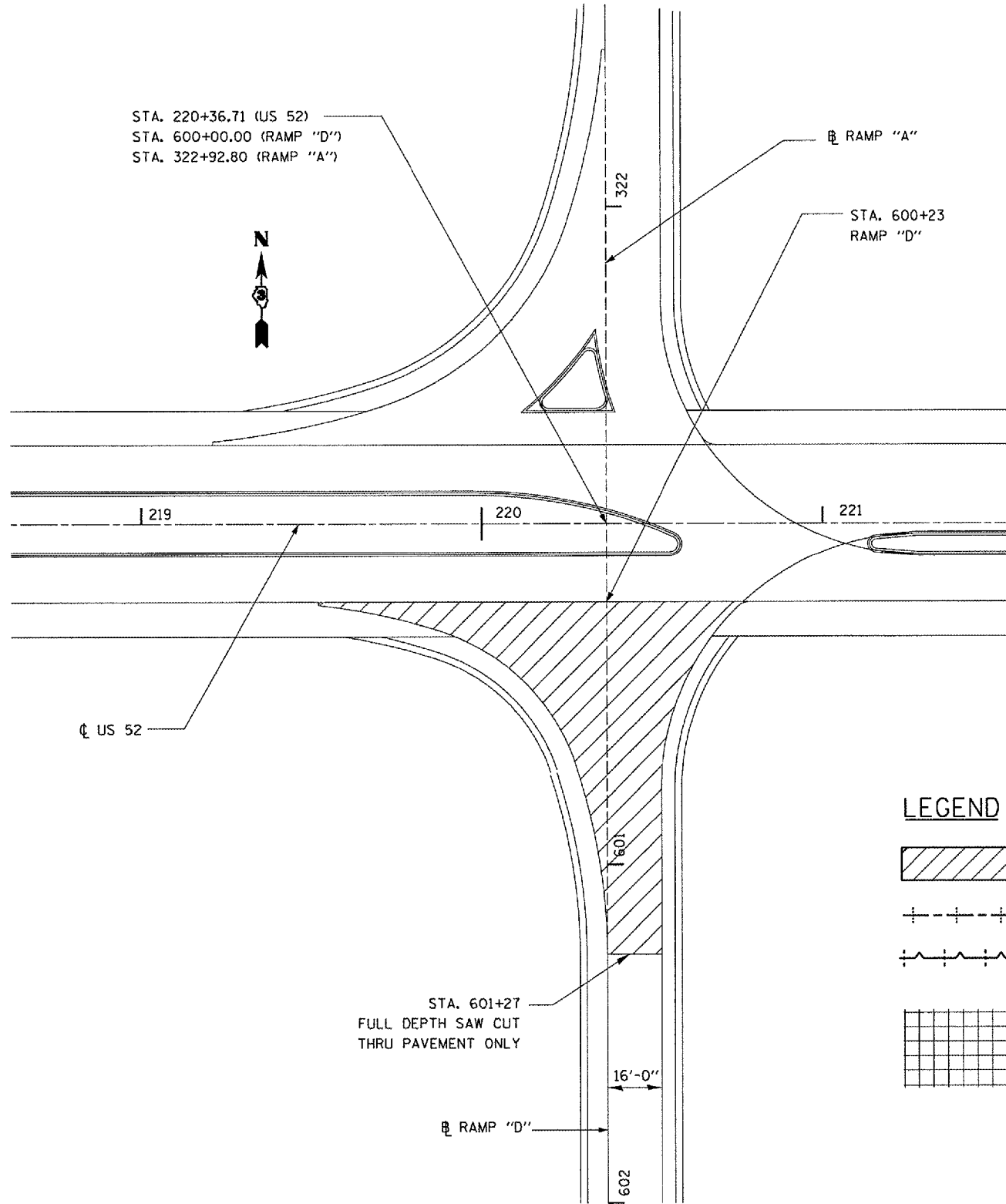
REVISIONS	
NAME	DATE

ILLINOIS DEPARTMENT OF TRANSPORTATION  
**PAVEMENT DETAILS - RAMP "B"**  
 FAI ROUTE 39 (I-39)  
 SECTION 50(1,2,3,4,5,6,7,8)PATCHING  
 LASALLE COUNTY

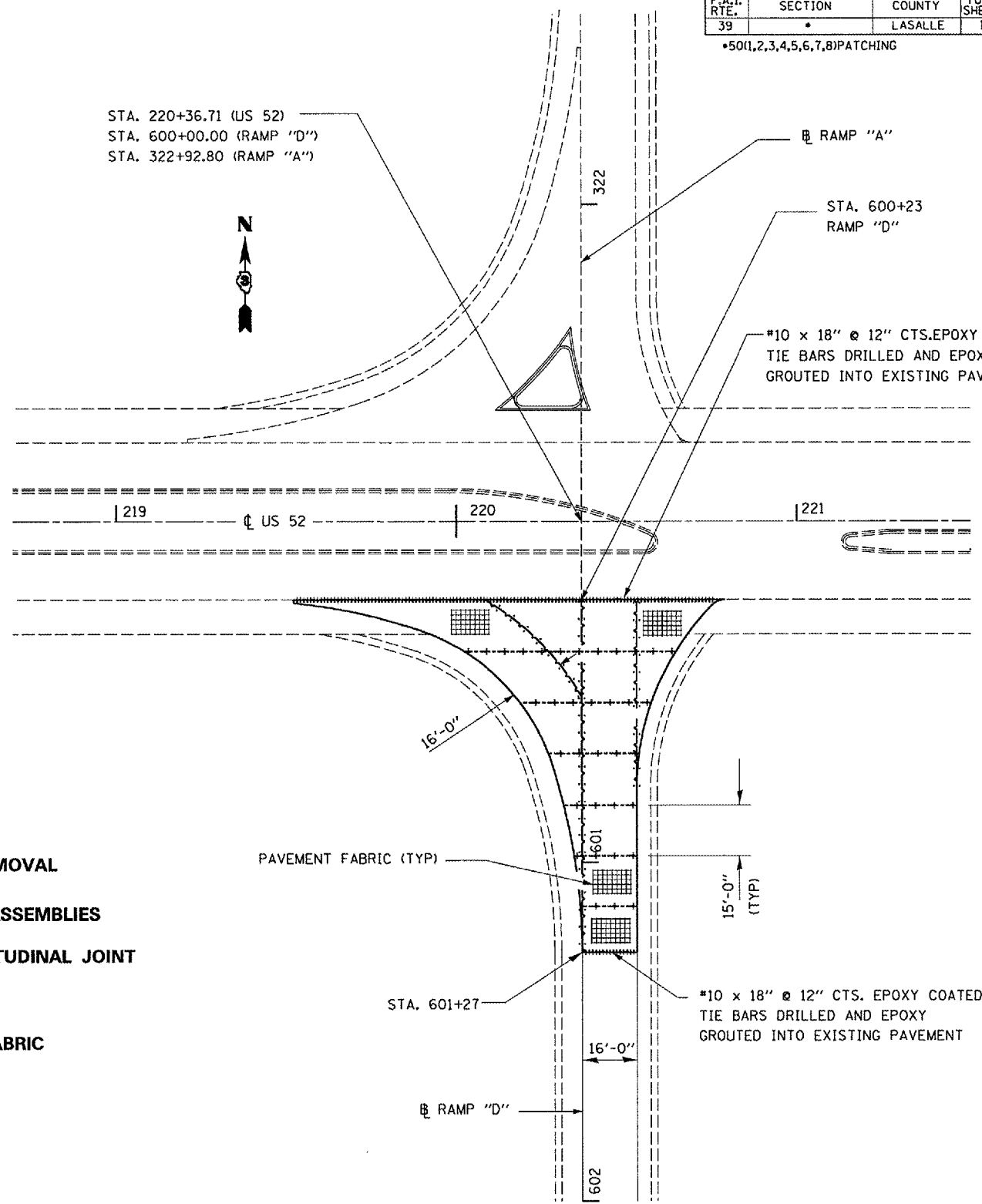
Date: February 27, 2007  
 C:/projects/cmain08/cm304/details.dgn

F.A.I. RTE.	SECTION	COUNTY	TOTAL SHEETS	SHEET NO.
39		LASALLE	16	11

\*50(1,2,3,4,5,6,7,8)PATCHING

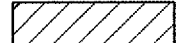
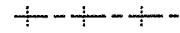

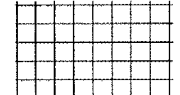


EXISTING PAVEMENT DETAILS



PROPOSED PAVEMENT DETAILS

LEGEND

-  PAVEMENT REMOVAL
-  DOWEL BAR ASSEMBLIES
-  KEYED LONGITUDINAL JOINT W/TIE BARS
-  PAVEMENT FABRIC

STA. 601+27  
 FULL DEPTH SAW CUT  
 THRU PAVEMENT ONLY

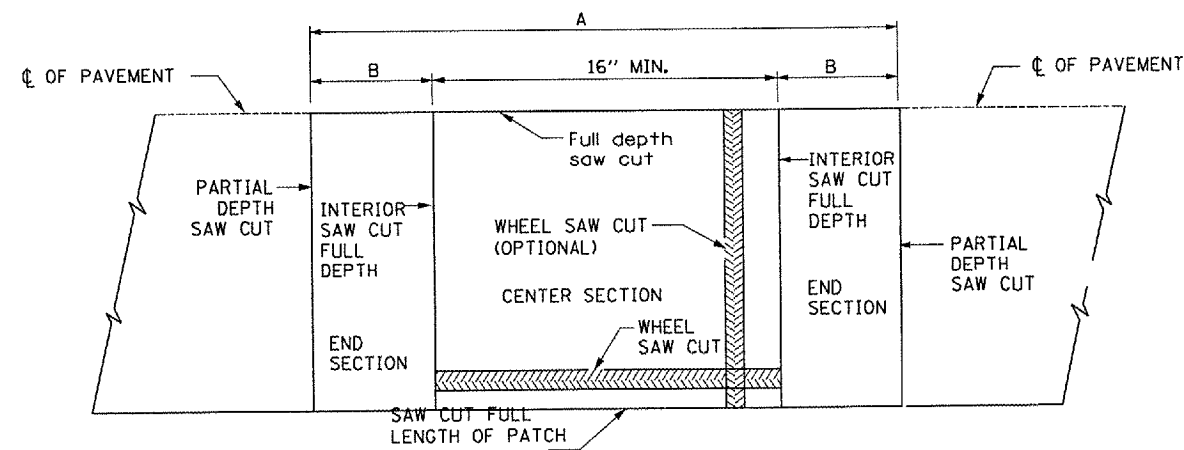
REVISIONS	
NAME	DATE

ILLINOIS DEPARTMENT OF TRANSPORTATION  
**PAVEMENT DETAILS - RAMP "D"**  
 FAI ROUTE 39 (I-39)  
 SECTION 50(1,2,3,4,5,6,7,8)PATCHING  
 LASALLE COUNTY

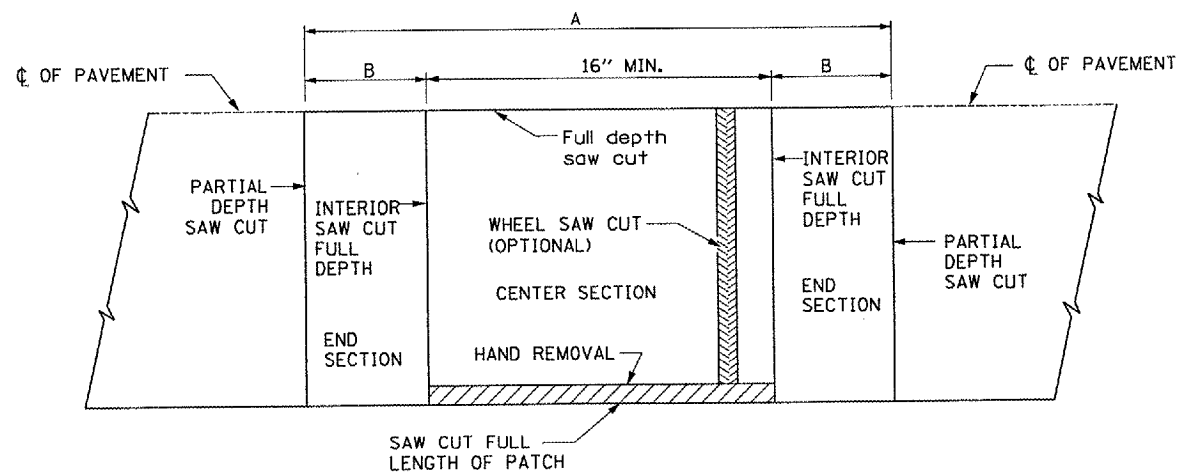
Date: February 27, 2007  
 c:\projects\main08\cm304\details.dgn

F.A.I. RTE.	SECTION	COUNTY	TOTAL SHEETS	SHEET NO.
39		LASALLE	16	12

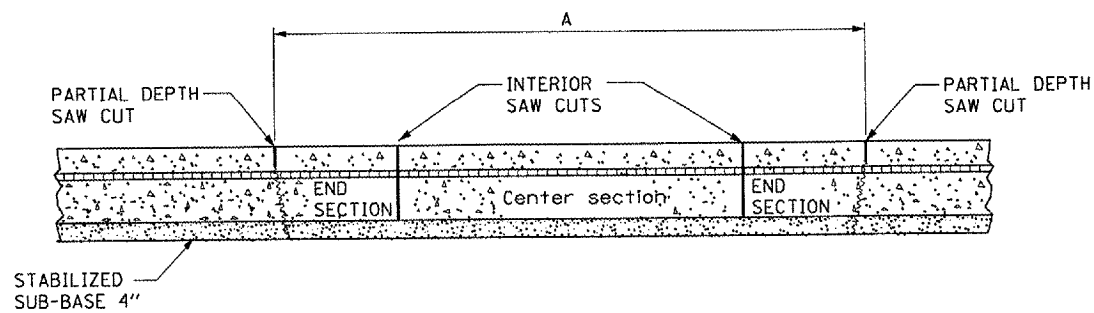
\*50(1,2,3,4,5,6,7,8)PATCHING



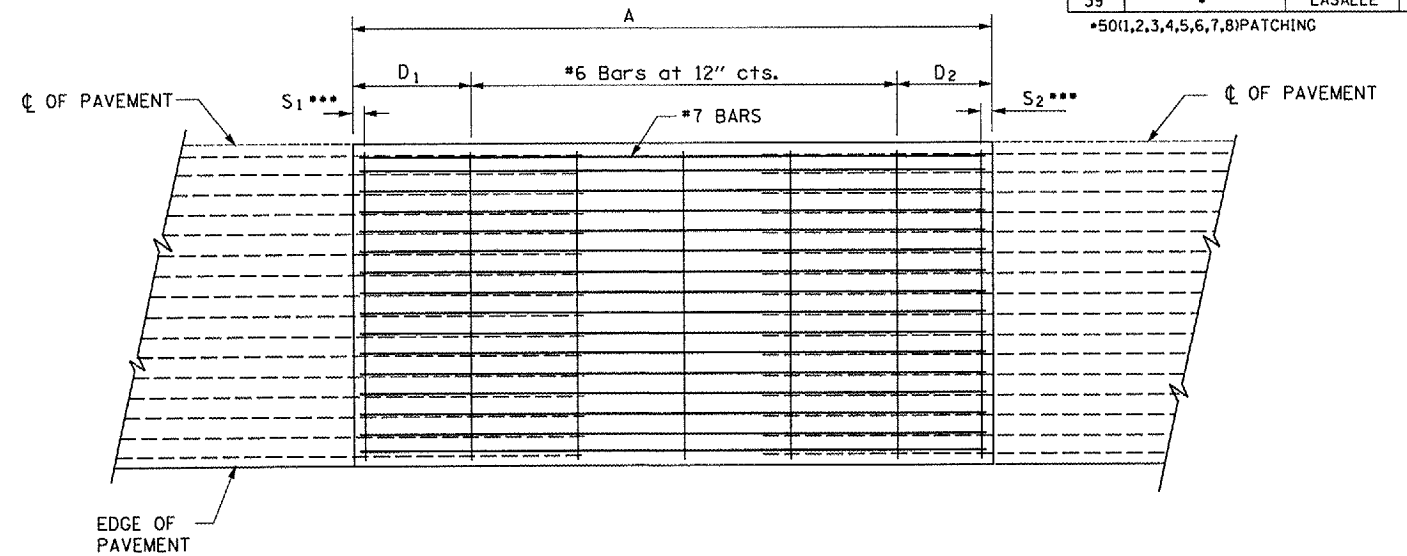
**ALTERNATE SAWING DETAIL**  
(PCC SHOULDER)



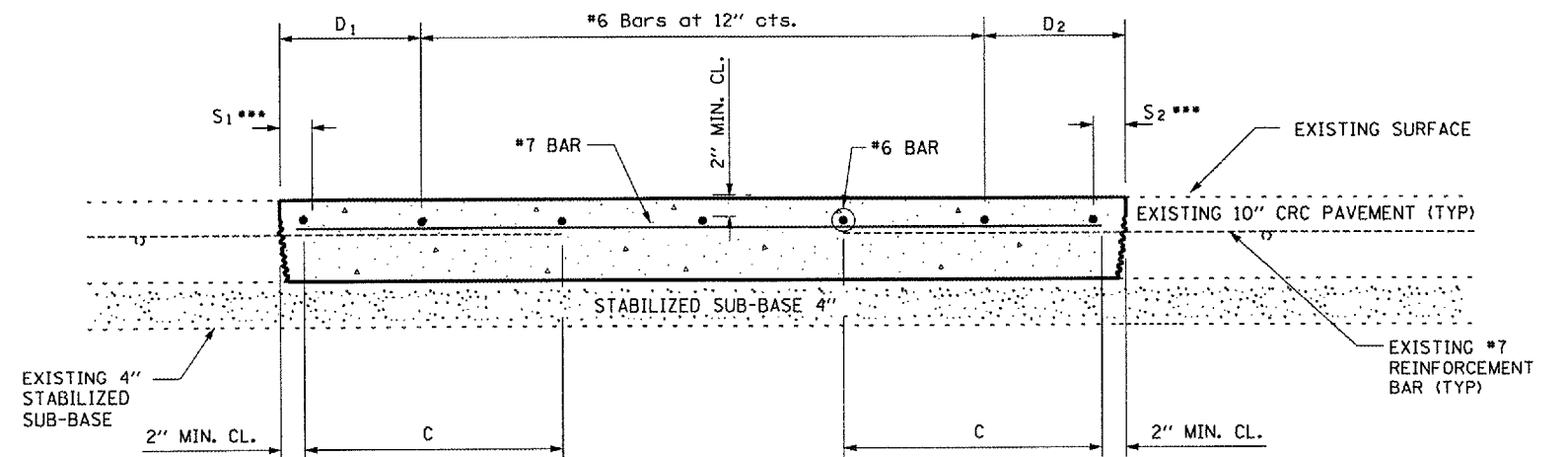
**PAVEMENT SAWING DETAIL**  
(PCC SHOULDER)



**REMOVAL DETAIL**



**PROPOSED PAVEMENT DETAIL**  
(AGAINST CONCRETE SHOULDER)



**PROPOSED CLASS A PATCHING DETAIL**

EXISTING LONGITUDINAL REINFORCEMENT BARS	A (min.)	B (min.)	C (min.)
No. 7	6'-0"	24"	22"

**NOTES:**

- EVERY 3rd INTERSECTION MUST BE TIED
- LAP NEW REINFORCEMENT WITH EXISTING LONGITUDINAL REINFORCEMENT
- VARIABLES: WHERE S<sub>1</sub> AND S<sub>2</sub> ARE 2 1/2" MIN. AND 12" MAX. D<sub>1</sub> = 2(S<sub>1</sub>) AND D<sub>2</sub> = 2(S<sub>2</sub>)

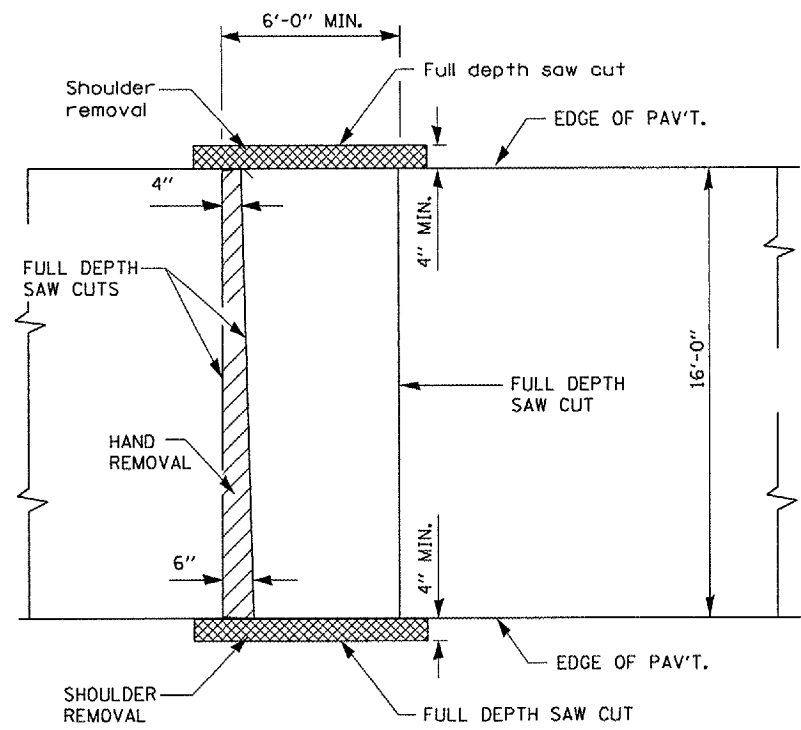
REVISIONS	
NAME	DATE

ILLINOIS DEPARTMENT OF TRANSPORTATION  
**CLASS A PATCHING DETAILS**  
FAI ROUTE 39 (I-39)  
SECTION 50(1,2,3,4,5,6,7,8)PATCHING  
LASALLE COUNTY

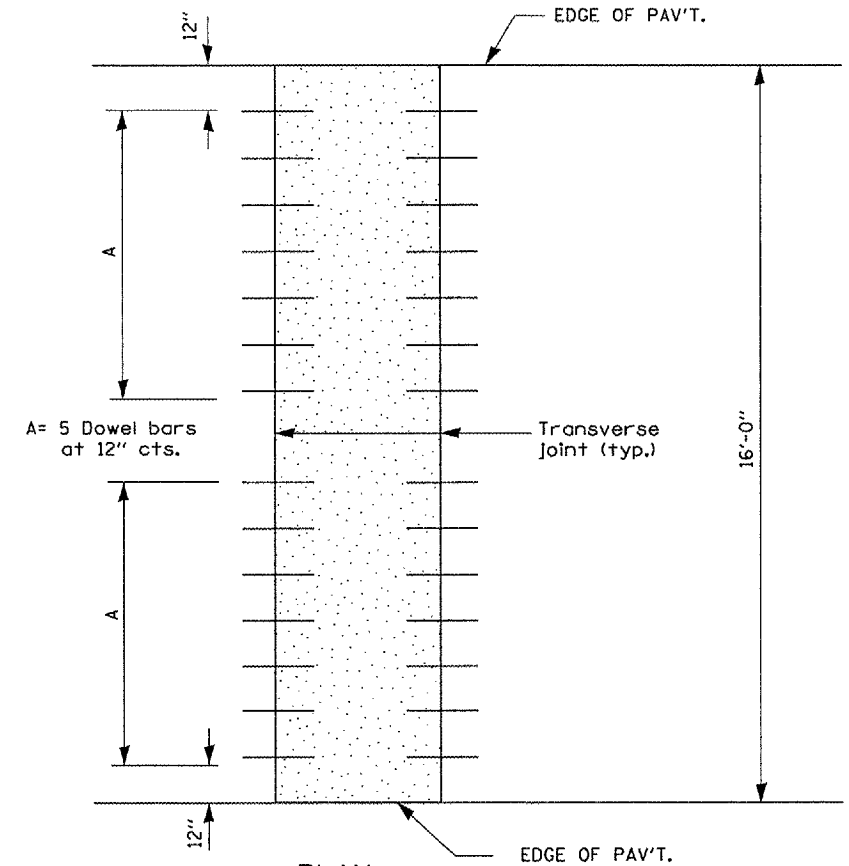
Date: February 27, 2007  
c:/projects/cmain08/cm304/details.dgn

F.A.I. RTE.	SECTION	COUNTY	TOTAL SHEETS	SHEET NO.
39		LASALLE	16	13

\*50(1,2,3,4,5,6,7,8)PATCHING

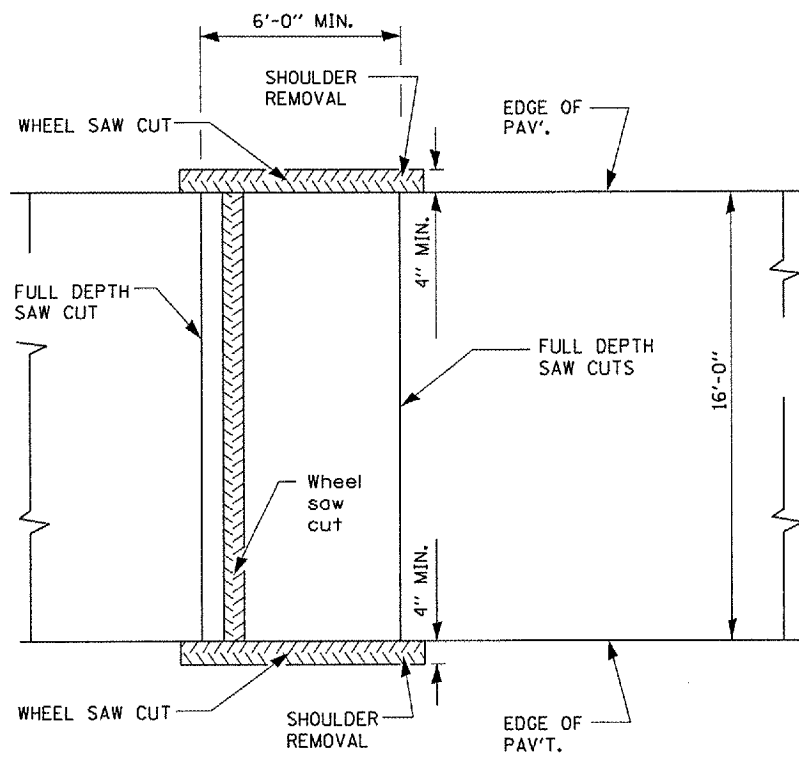


**PAVEMENT SAWING DETAIL**  
(HMA SHOULDER)

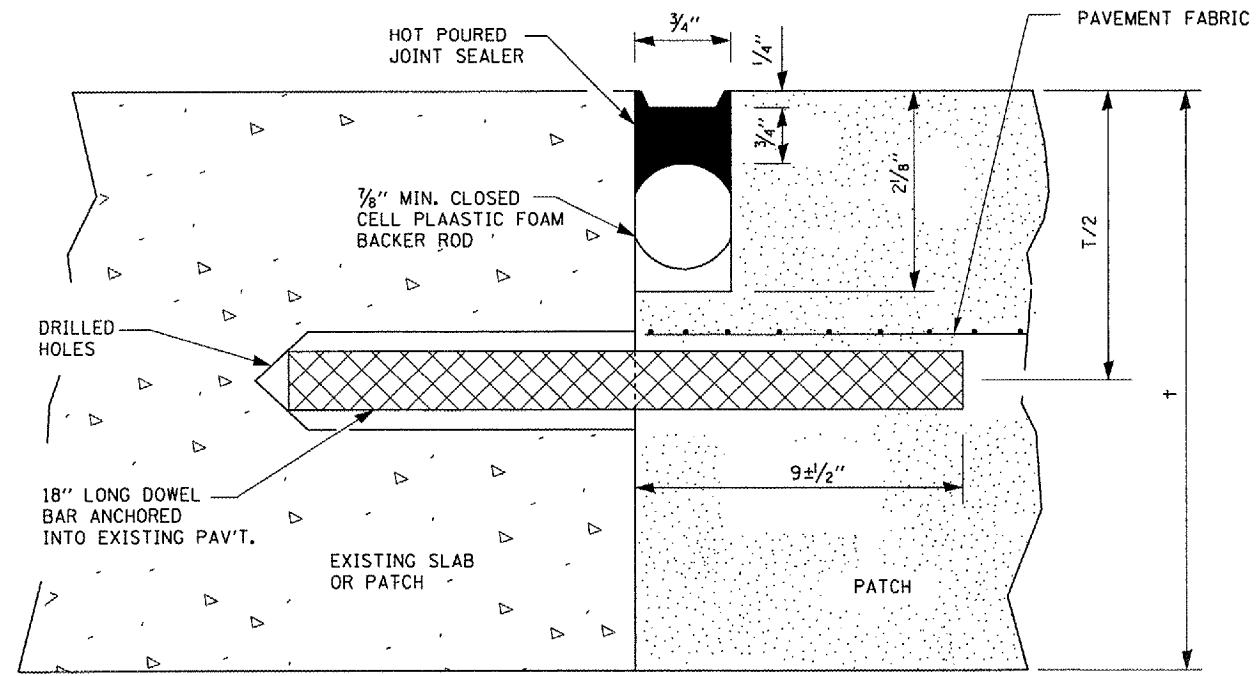


**PLAN JOINT DETAIL**

PAVEMENT THICKNESS	DOWEL BAR DIAMETER	HOLE DIAMETER
8" OR GREATER	1 1/2"	1 5/8"



**ALTERNATE SAWING DETAIL**  
(HMA SHOULDER)



**ELEVATION JOINT DETAIL**

**GENERAL NOTES**

The transverse joints for Class B patches shall align with joints or cracks in the adjacent lane whenever possible.  
See Standard 420701 for details of pavement fabric.

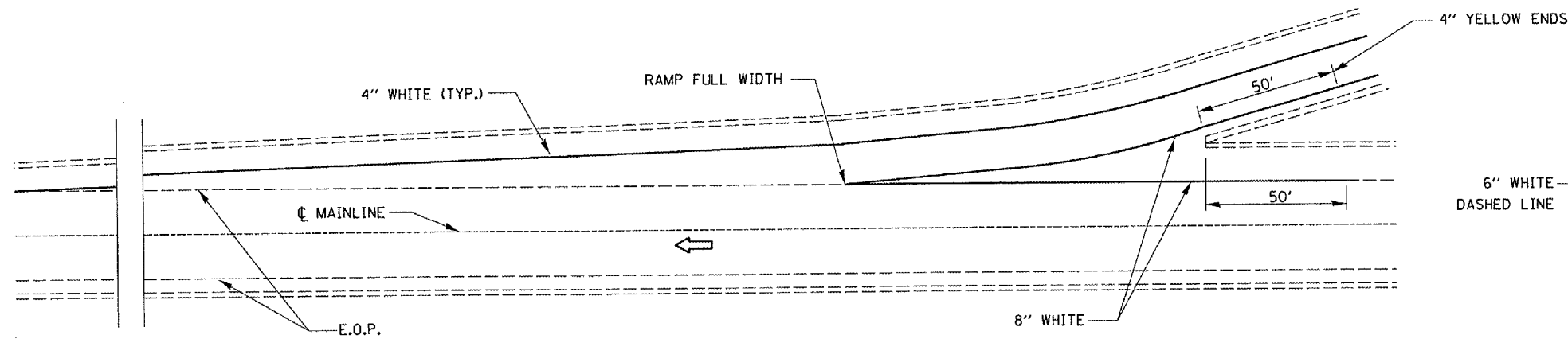
REVISIONS	
NAME	DATE

ILLINOIS DEPARTMENT OF TRANSPORTATION  
**CLASS B PATCHING DETAILS**  
FAI ROUTE 39 (I-39)  
SECTION 50(1,2,3,4,5,6,7,8)PATCHING  
LASALLE COUNTY

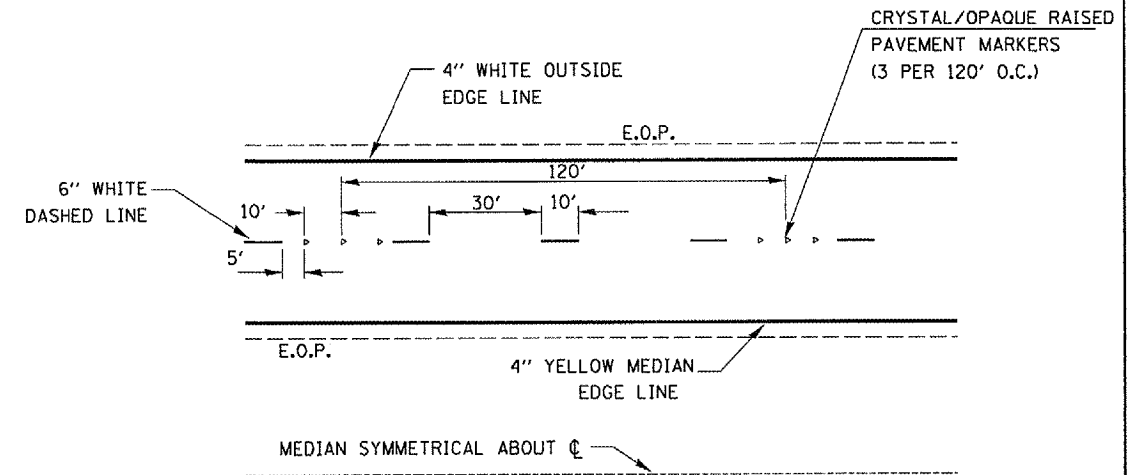
Date: February 27, 2007  
c:/projects/cm304/details.dgn

F.A.I. RTE.	SECTION	COUNTY	TOTAL SHEETS	SHEET NO.
39	*	LASALLE	16	14

\*50(1,2,3,4,5,6,7,8)PATCHING



**TYPICAL PAVEMENT MARKING FOR ENTRANCE RAMP TERMINALS**

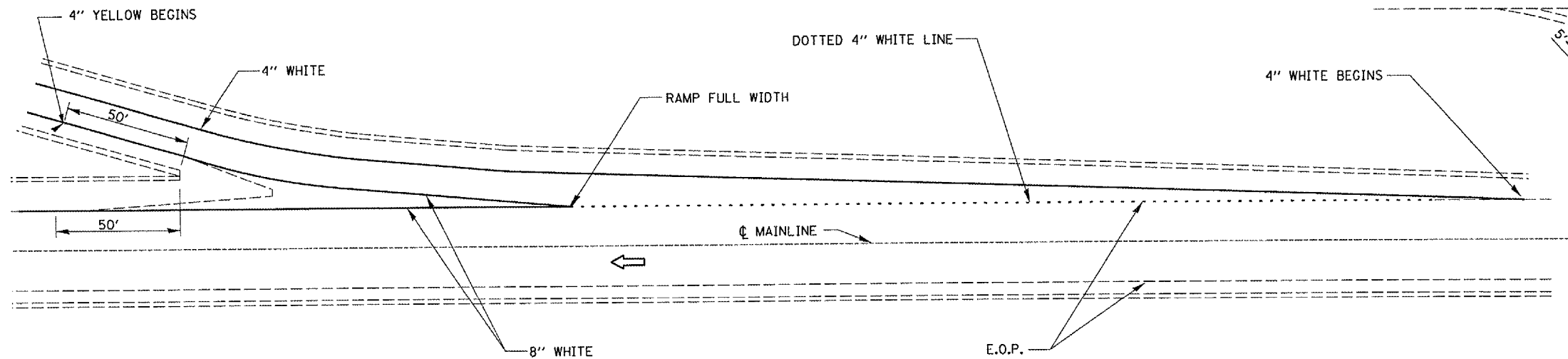


**TYPICAL PAVEMENT MARKINGS**

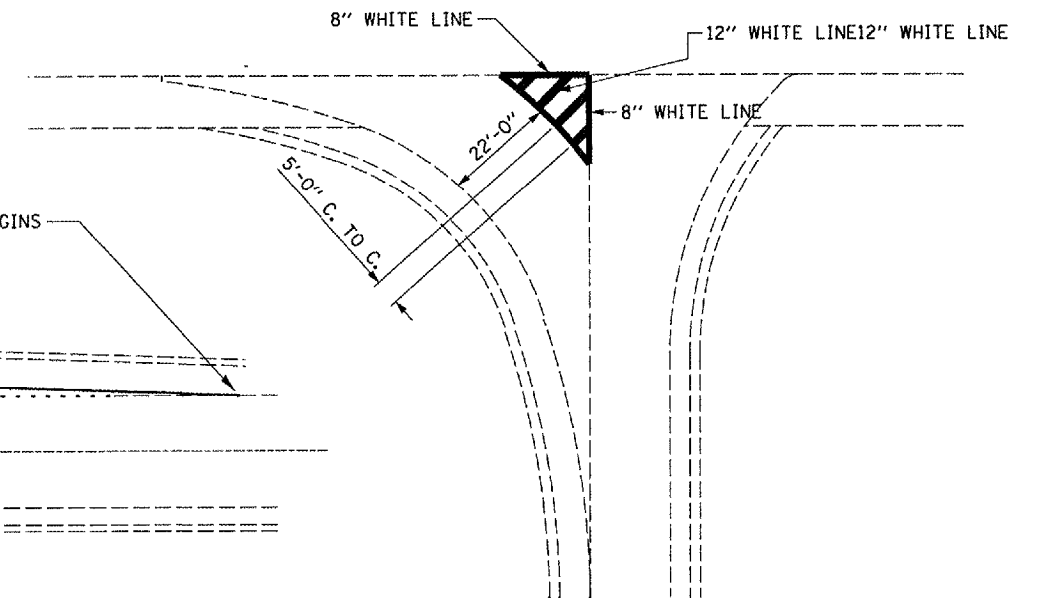
**NOTE:**

WHEN PATCHING IS ADJACENT TO 8" PAVEMENT MARKING LINE THE 8" STRIP SHALL BE REPLACED WITH TWO 4" LINES.

RAISED REFLECTIVE PAVEMENT MARKERS THAT FALL WITHIN PATCHED BOUNDARIES WILL NOT BE REPLACED.



**TYPICAL PAVEMENT MARKINGS FOR EXIT RAMP TERMINALS**



**TYPICAL PAVEMENT MARKINGS FOR ISLANDS**

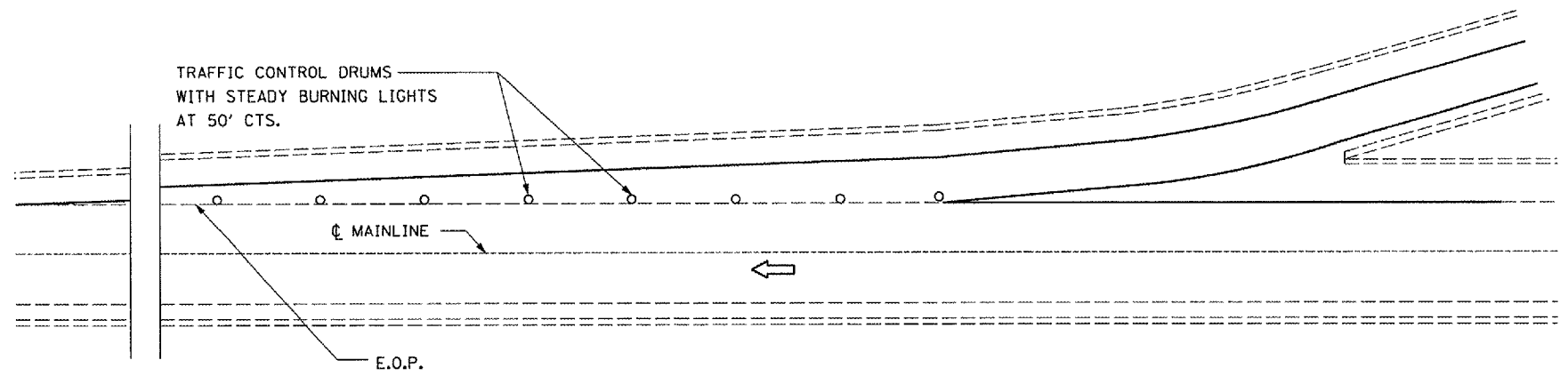
Date: February 27, 2007  
c:/projects/cmain08/cm304/details.dgn

REVISIONS	
NAME	DATE

ILLINOIS DEPARTMENT OF TRANSPORTATION  
**PAVEMENT MARKING DETAILS**  
FAI ROUTE 39 (I-39)  
SECTION 50(1,2,3,4,5,6,7,8)PATCHING  
LASALLE COUNTY

F.A.I. RTE.	SECTION	COUNTY	TOTAL SHEETS	SHEET NO.
39	*	LASALLE	16	15

\*50(1,2,3,4,5,6,7,8)PATCHING



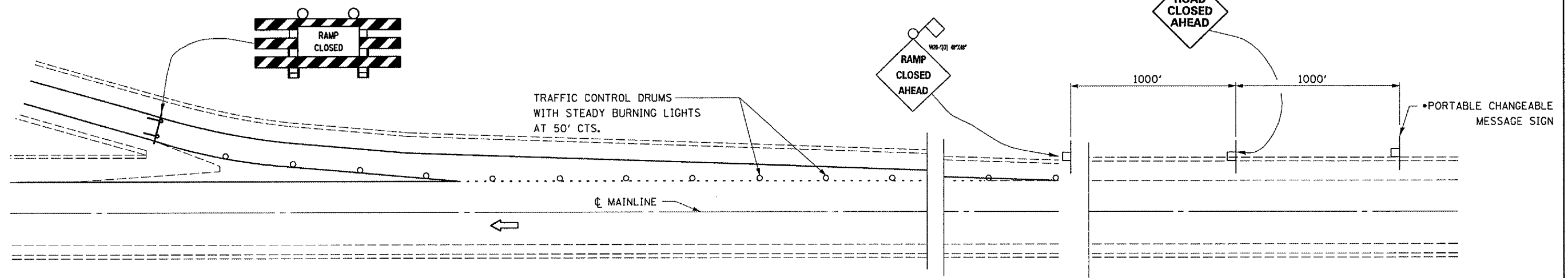
**TRAFFIC CONTROL FOR ENTRANCE RAMP TERMINALS**

SYMBOLS

- ▬ SIGN
- ⌈ TYPE III BARRICADE
- FLAGGER

\*PORTABLE CHANGEABLE MESSAGE SIGNS SHOULD READ:

FOR NORTHBOUND TRAFFIC; RAMP CLOSED USE EXIT 72  
 FOR SOUTHBOUND TRAFFIC; RAMP CLOSED USE EXIT 59



**TRAFFIC CONTROL FOR EXIT RAMP TERMINALS**

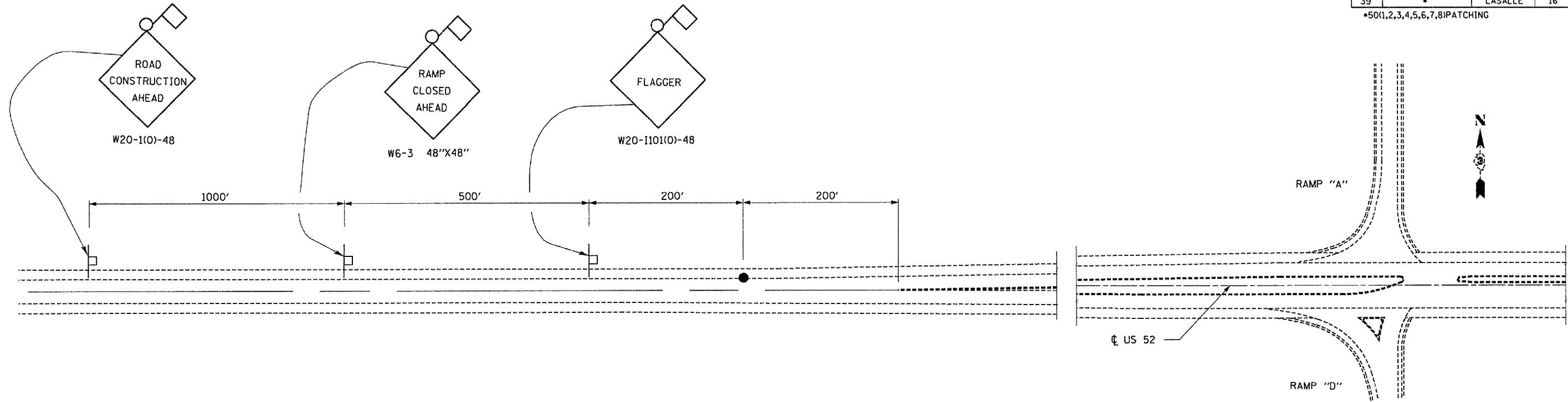
REVISIONS	
NAME	DATE

ILLINOIS DEPARTMENT OF TRANSPORTATION  
**TRAFFIC CONTROL FOR RAMPS**  
 FAI ROUTE 39 (I-39)  
 SECTION 5091,2,3,4,5,6,7,8)PATCHING  
 LASALLE COUNTY

Date: February 27, 2007  
 c:\projects\main08\cm304\details.dgn

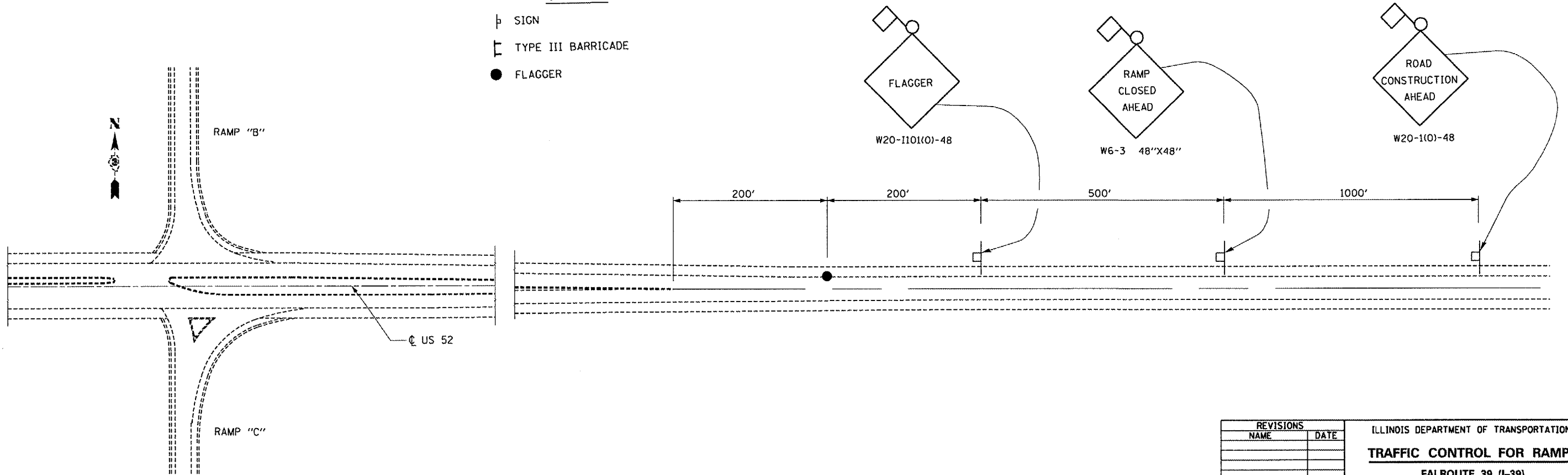
F.A.I. RTE.	SECTION	COUNTY	TOTAL SHEETS	SHEET NO.
39	*	LASALLE	16	16

\*50(1,2,3,4,5,6,7,8)PATCHING



**SYMBOLS**

- ▬ SIGN
- ▬ TYPE III BARRICADE
- FLAGGER



Date: February 27, 2007  
c:/projects/cmain08/cm304/details.dgn

REVISIONS	
NAME	DATE

ILLINOIS DEPARTMENT OF TRANSPORTATION  
**TRAFFIC CONTROL FOR RAMPS**  
 FAI ROUTE 39 (I-39)  
 SECTION 50(1,2,3,4,5,6,7,8)PATCHING  
 LASALLE COUNTY