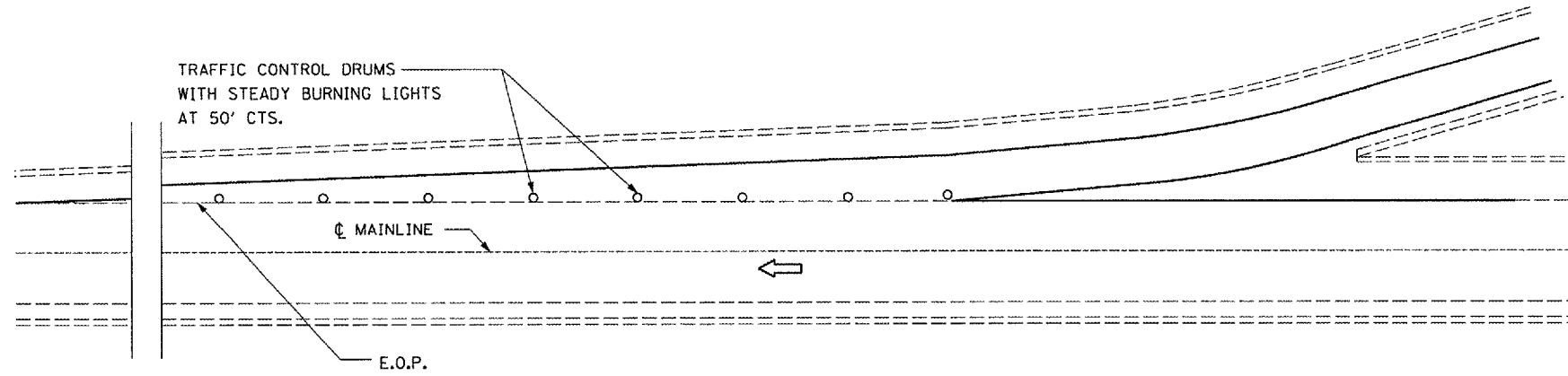


F.A.I. RTE.	SECTION	COUNTY	TOTAL SHEETS	SHEET NO.
39	*	LASALLE	16	15

*50(1,2,3,4,5,6,7,8)PATCHING



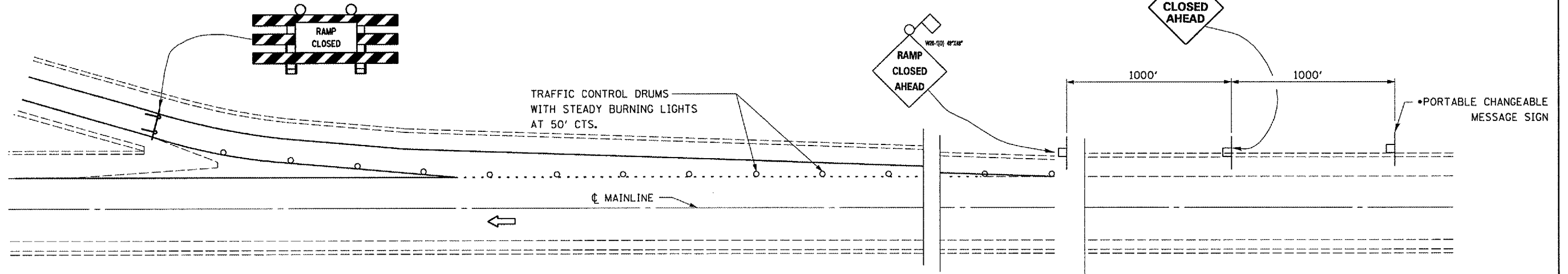
TRAFFIC CONTROL FOR ENTRANCE RAMP TERMINALS

SYMBOLS

- ▬ SIGN
- ⌈ TYPE III BARRICADE
- FLAGGER

*PORTABLE CHANGEABLE MESSAGE SIGNS SHOULD READ:

FOR NORTHBOUND TRAFFIC; RAMP CLOSED USE EXIT 72
 FOR SOUTHBOUND TRAFFIC; RAMP CLOSED USE EXIT 59



TRAFFIC CONTROL FOR EXIT RAMP TERMINALS

REVISIONS	
NAME	DATE

ILLINOIS DEPARTMENT OF TRANSPORTATION
TRAFFIC CONTROL FOR RAMPS
 FAI ROUTE 39 (I-39)
 SECTION 5091,2,3,4,5,6,7,8)PATCHING
 LASALLE COUNTY

Date: February 27, 2007
 c:\projects\main08\cm304\details.dgn