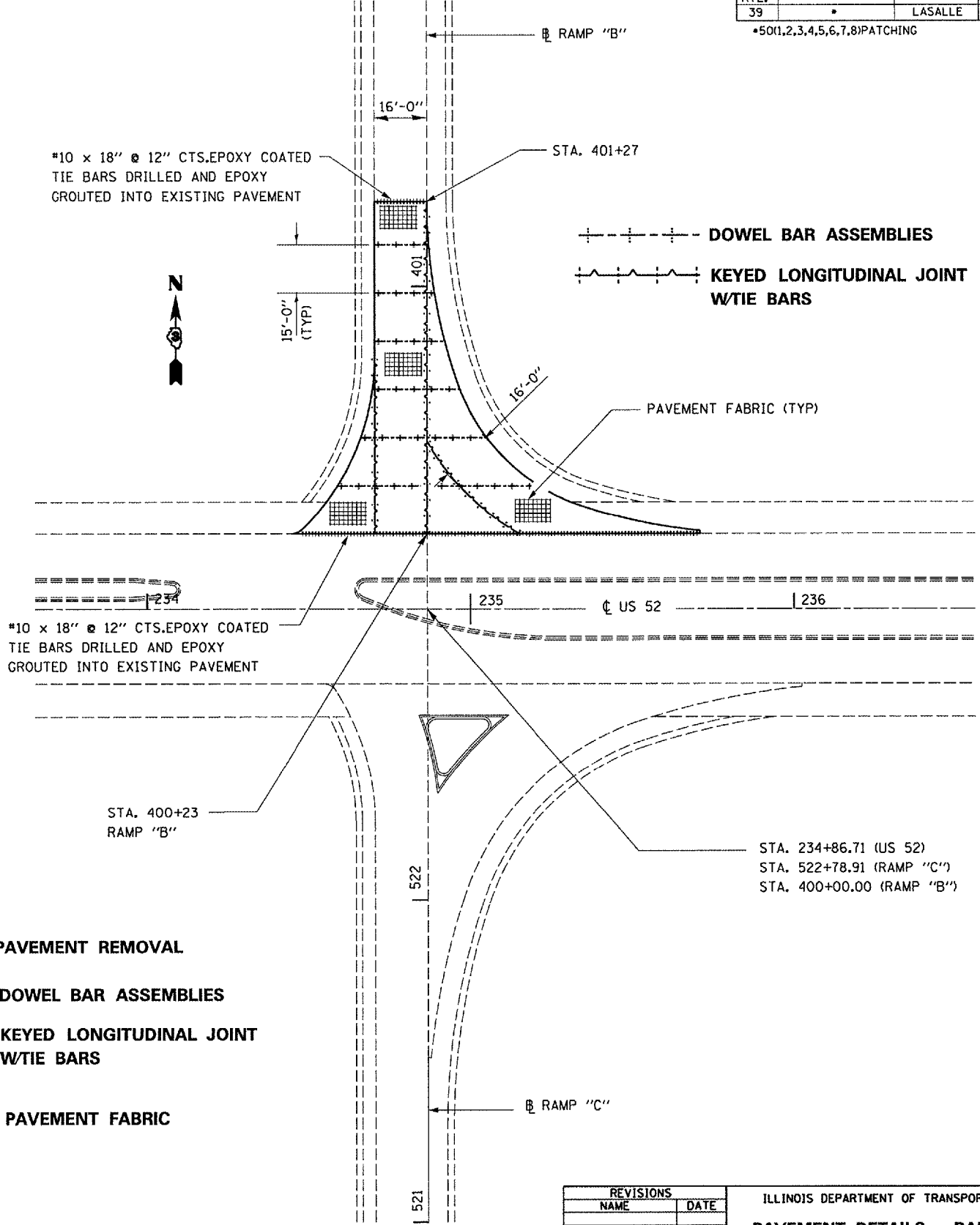
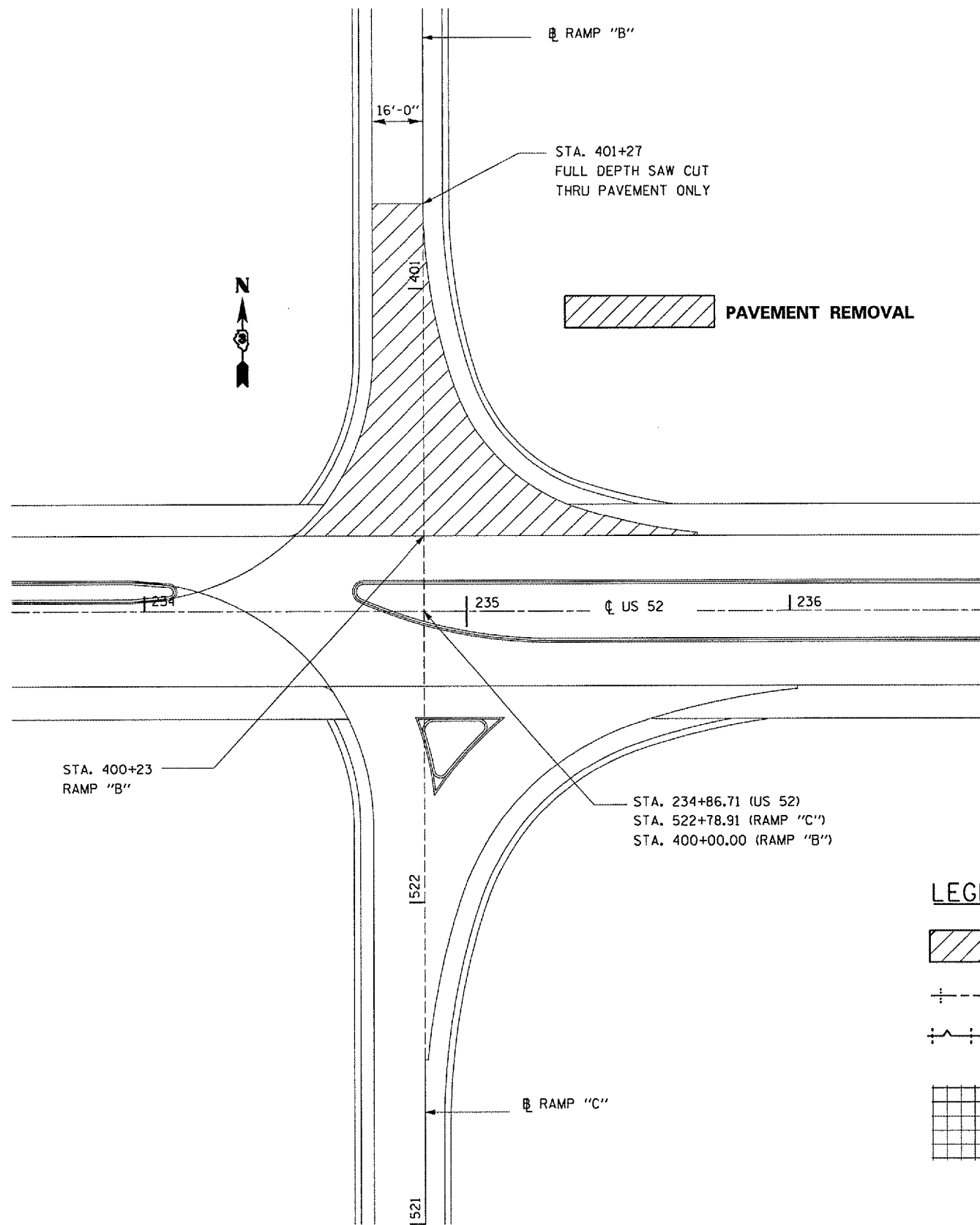
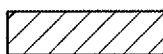
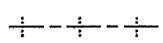
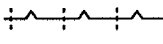
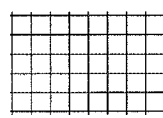


F.A.I. RTE.	SECTION	COUNTY	TOTAL SHEETS	SHEET NO.
39		LASALLE	16	10

\*50(1,2,3,4,5,6,7,8)PATCHING



**LEGEND**

-  PAVEMENT REMOVAL
-  DOWEL BAR ASSEMBLIES
-  KEYED LONGITUDINAL JOINT W/TIE BARS
-  PAVEMENT FABRIC

REVISIONS	
NAME	DATE

ILLINOIS DEPARTMENT OF TRANSPORTATION  
**PAVEMENT DETAILS - RAMP "B"**  
 FAI ROUTE 39 (I-39)  
 SECTION 50(1,2,3,4,5,6,7,8)PATCHING  
 LASALLE COUNTY

Date: February 27, 2007  
 C:\projects\main08\cm304\details.dgn