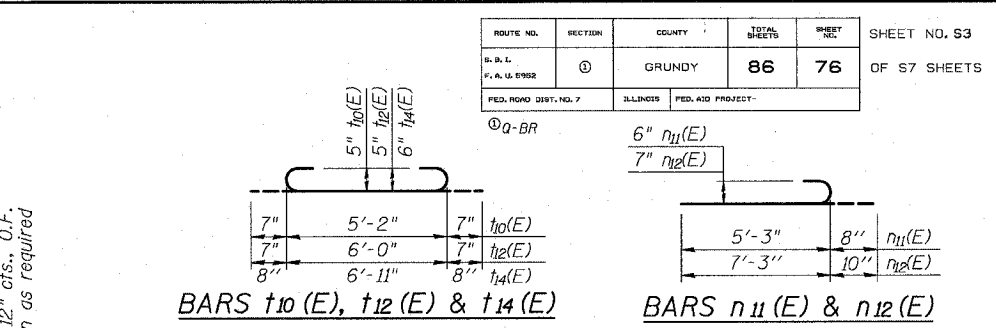
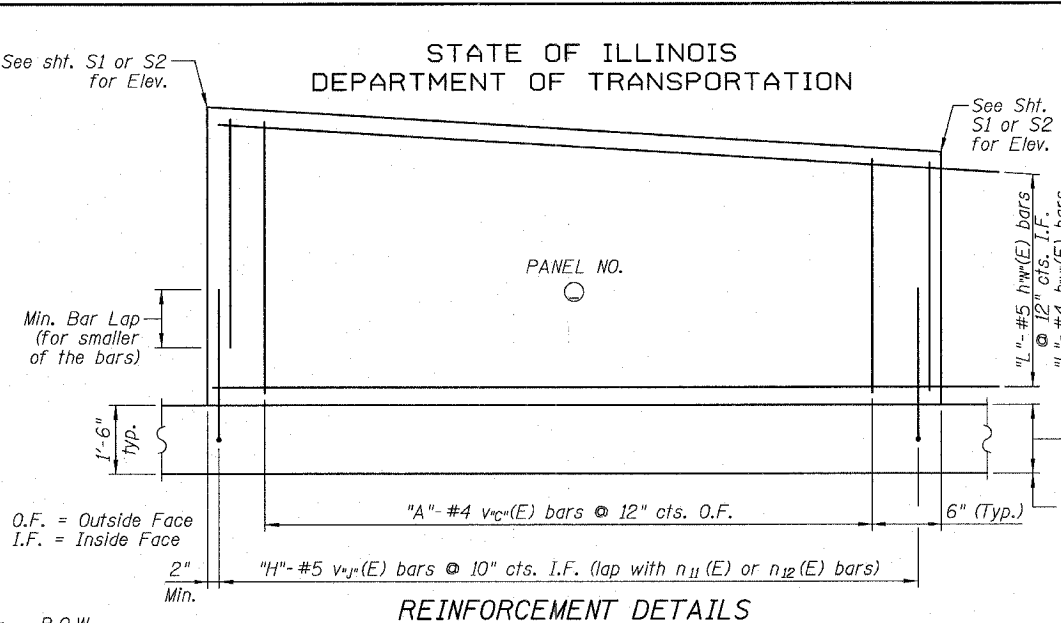
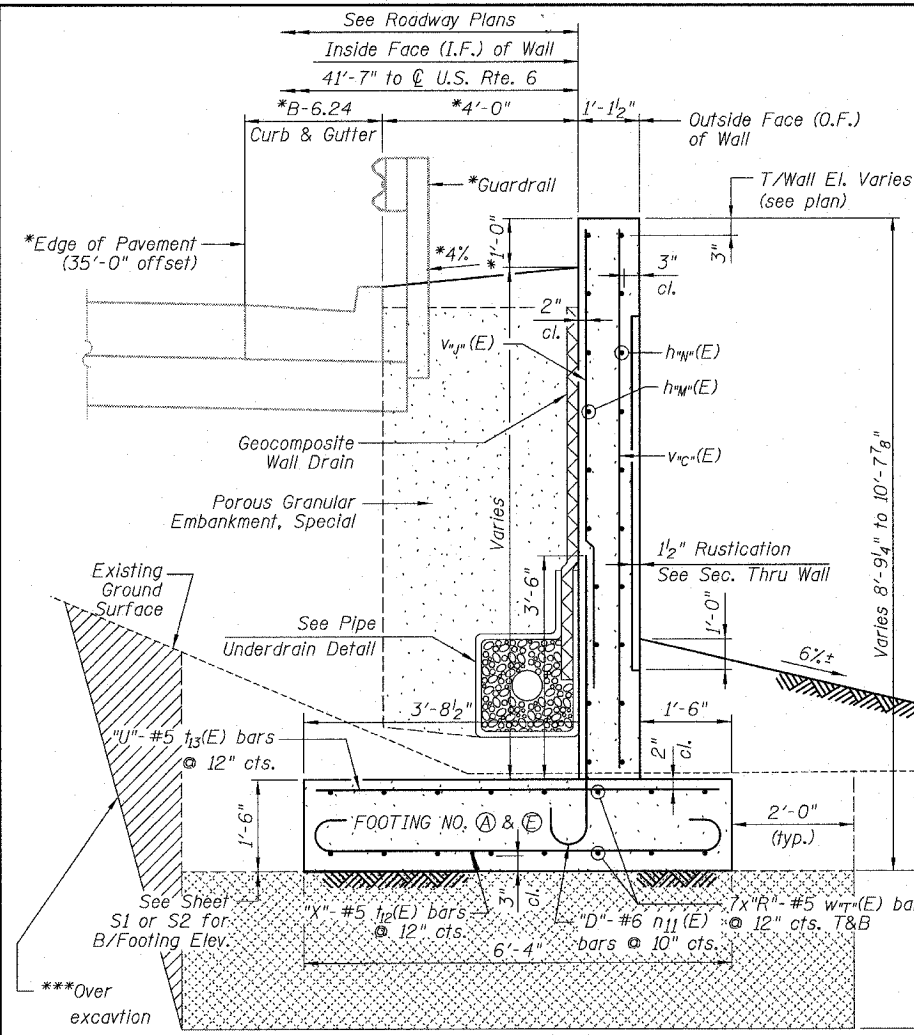


STATE OF ILLINOIS
DEPARTMENT OF TRANSPORTATION

ROUTE NO.	SECTION	COUNTY	TOTAL SHEETS	SHEET NO.
86	76	GRUNDY	86	76

OF 87 SHEETS



MIN. BAR LAP

Bar No.	Length
#4	1'-8"
#5	2'-2"
#6	2'-7"
#7	3'-5"

TABLE OF FOOTING DIMENSIONS

FOOTING NO.	"D"	"R"	"T"	"U"	"X"	"Y"
(A)	216	6	13	181	181	5
(B)	252	7	15	214	214	5
(C)	66	2	10	56	56	5
(D)	324	9	15	274	274	5
(E)	108	3	12	91	91	5
(F)	108	3	15	94	94	6
(G)	60	2	14	51	51	6

BILL OF BARS

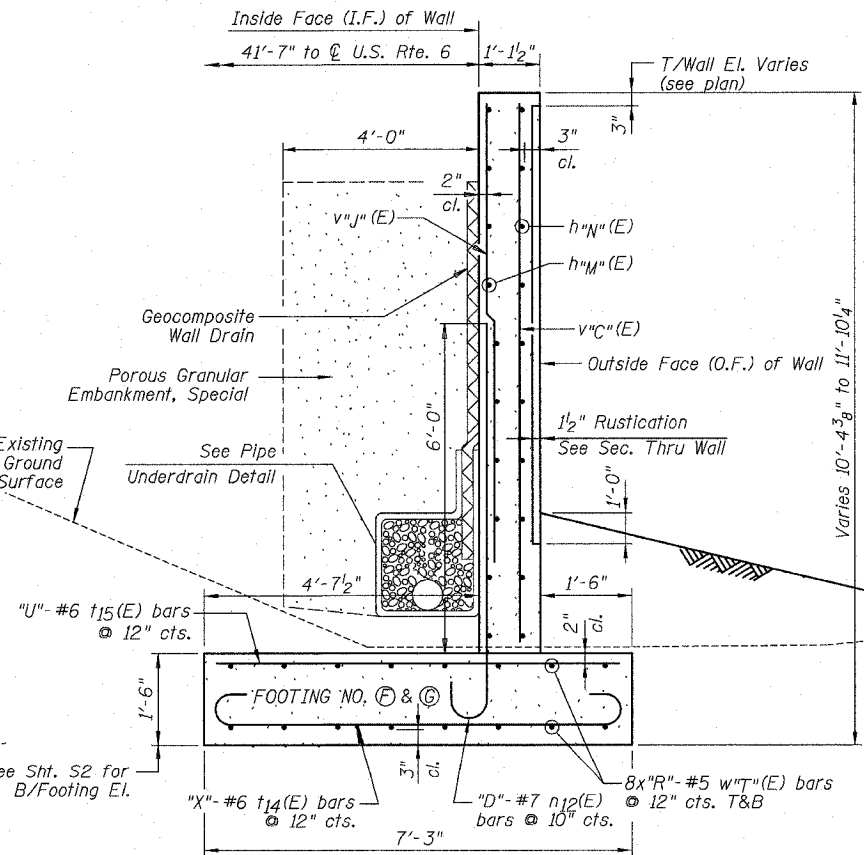
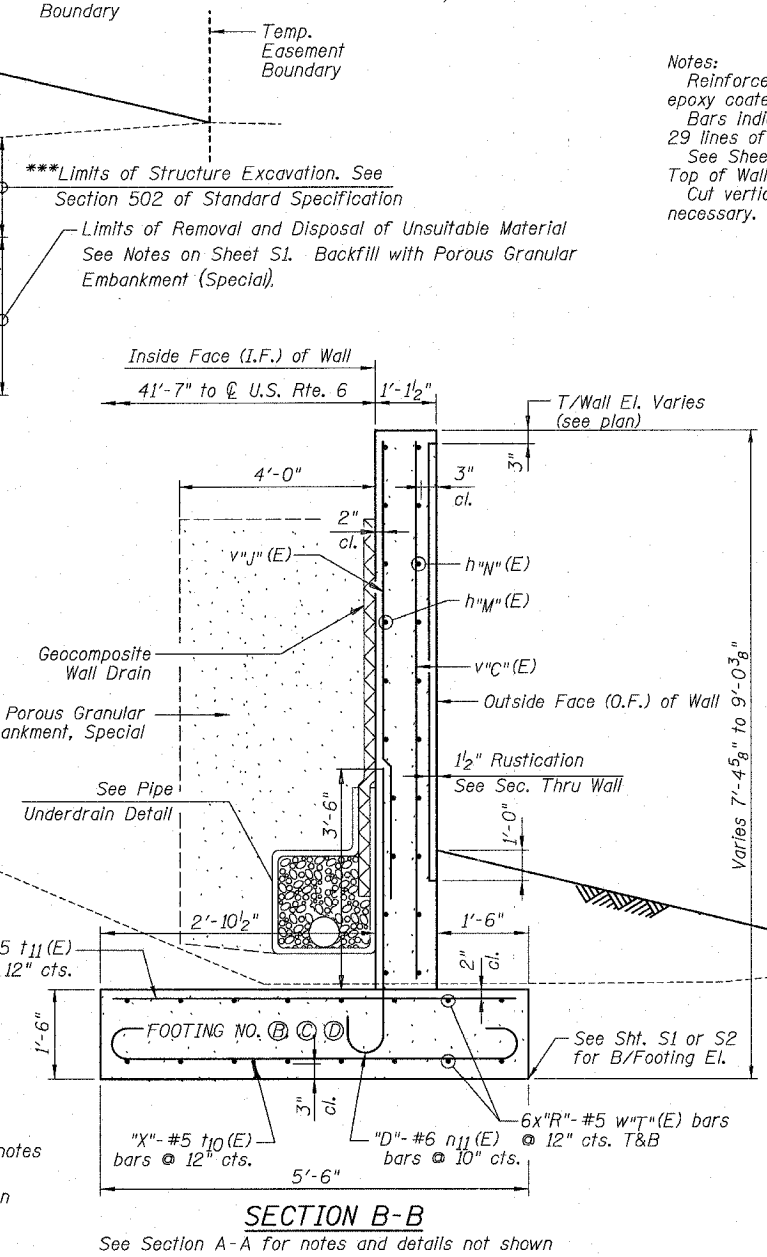
Bar No.	Size	Length	Shape
h10(E)	#4	31'-8"	---
h11(E)	#5	32'-2"	---
h12(E)	#4	29'-8"	---
h13(E)	#5	29'-8"	---
h14(E)	#4	29'-2"	---
h15(E)	#4	27'-2"	---
h17(E)	#5	27'-2"	---
h18(E)	#4	26'-8"	---
h20(E)	#4	24'-8"	---
h21(E)	#5	24'-8"	---
n11(E)	#6	5'-11"	U
n12(E)	#7	8'-1"	U
t10(E)	#5	6'-4"	C
t11(E)	#5	5'-2"	---
t12(E)	#5	7'-2"	C
t13(E)	#5	6'-0"	---
t14(E)	#6	8'-3"	C
t15(E)	#6	6'-11"	---
v10(E)	#5	4'-0"	---
v11(E)	#4	5'-2"	---
v12(E)	#5	4'-10"	---
v13(E)	#4	6'-0"	---
v14(E)	#5	5'-0"	---
v15(E)	#4	6'-2"	---
v16(E)	#5	5'-2"	---
v17(E)	#4	6'-4"	---
v18(E)	#5	5'-7"	---
v19(E)	#4	6'-9"	---
v20(E)	#5	5'-11"	---
v21(E)	#4	7'-1"	---
v22(E)	#5	6'-4"	---
v23(E)	#4	7'-6"	---
v24(E)	#5	6'-10"	---
v25(E)	#4	8'-0"	---
v26(E)	#5	7'-1"	---
v27(E)	#4	8'-3"	---
v28(E)	#5	7'-7"	---
v29(E)	#4	8'-9"	---
v30(E)	#5	6'-0"	---
v31(E)	#4	9'-3"	---
v32(E)	#5	6'-6"	---
v33(E)	#4	9'-9"	---
v34(E)	#5	7'-4"	---
v35(E)	#4	8'-6"	---
w10(E)	#5	28'-5"	---
w11(E)	#5	5'-0"	---
w12(E)	#5	31'-4"	---
w13(E)	#5	31'-9"	---
w14(E)	#5	25'-11"	---
w15(E)	#5	32'-4"	---

TABLE OF PANEL DIMENSIONS

PANEL NO.	"A"	"C"	"H"	"J"	"L"	"M"	"N"	PANEL NO.	"A"	"C"	"H"	"J"	"L"	"M"	"N"
1	30	29	37	28	10	10	11	17	30	19	37	18	8	10	11
2	30	35	37	34	9	10	11	18	30	19	37	18	8	12	13
3	30	27	37	26	9	12	13	19	30	19	37	18	8	10	11
4	30	25	37	24	9	10	11	20	30	21	37	20	8	10	11
5	30	23	37	22	8	10	11	21	30	21	37	20	8	12	13
6	30	21	37	20	8	12	13	22	30	21	37	20	8	10	11
7	30	19	37	18	8	10	11	23	30	21	37	20	8	10	11
8	30	17	37	16	7	10	11	24	30	21	37	20	8	12	13
9	30	15	37	14	7	12	13	25	30	23	37	22	8	10	11
10	30	13	37	12	7	10	11	26	30	23	37	22	9	10	11
11	30	13	37	12	7	10	11	27	30	25	37	24	10	12	13
12	30	13	37	12	7	12	13	28	30	29	37	18	10	10	11
13	30	13	37	12	7	10	11	29	30	31	37	30	11	10	11
14	28	11	34	10	6	14	13	30	30	33	37	32	11	12	13
15	28	11	34	10	6	16	17	31	25	29	30	18	10	18	17
16	30	19	37	18	7	10	11	32	25	31	30	30	10	20	21

DESIGNED	BLU
CHECKED	MRM
DRAWN	MRM
CHECKED	BLU

*Future improvements, see Roadway Plans and Sheet S4 for notes and details regarding this contract.
***Backfill remainder of structure excavation and over excavation with same material specified for roadway embankment. Over excavation limits not measured for payment.



SECTION C-C

See Section A-A for notes and details not shown

WALL DETAILS 1
RETAINING WALL #3
STA. 450+35 TO STA. 459+80
U.S. ROUTE 6
FAU 5952-SEC. Q-BR
GRUNDY COUNTY
S.N. 032-8803

BOWMAN, BARRETT & ASSOCIATES INC.
CONSULTING ENGINEERS
130 E. RANDOLPH STREET
CHICAGO, ILLINOIS 60601
JOB NO. 541

