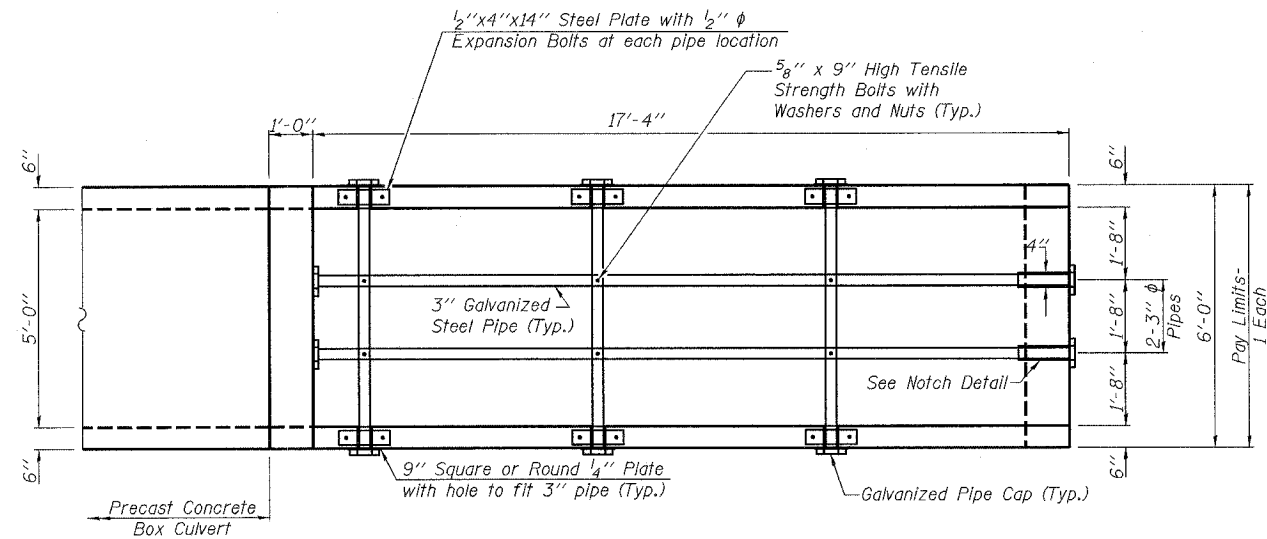
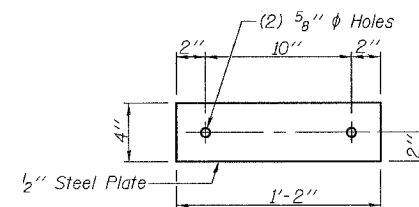


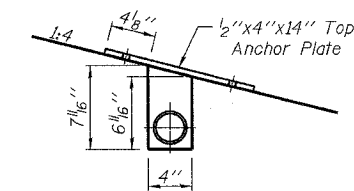
F.A.P. RTE.	SECTION	COUNTY	TOTAL SHEETS	SHEET NO.
*	**	STEPHENSON	174	80
STA.		TO STA.		
FED. ROAD DIST. NO.		ILLINOIS	FED. AID PROJECT	
*FAP 505 (IL 75)		CONTRACT NO. 64C32		
**110RS-1, 111RS-3				



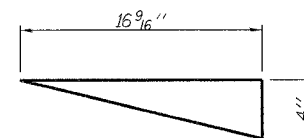
PLAN VIEW



TOP ANCHOR PLATE



DETAIL "A"



(4" Wide)

NOTCH DETAIL

BILL OF MATERIAL

DESCRIPTION	UNIT	QTY.
Box Culvert End Section, Culvert No. 9	Each	4
Name Plate	Each	1

GENERAL NOTES:

Slope flow line of the extension at the same rate as the flow line of the box.

Bolts, Nuts, and Washers shall be in accordance with Article 1006.08 of the standard specification and shall be galvanized.

The contract unit price "Each" for Box Culvert End Section, Culvert No. 9 shall include the Galvanized Pipe, Bolts, Nuts, Washers, and Steel Plates, and all applicable work according to Section 540 of the Standard Specifications.

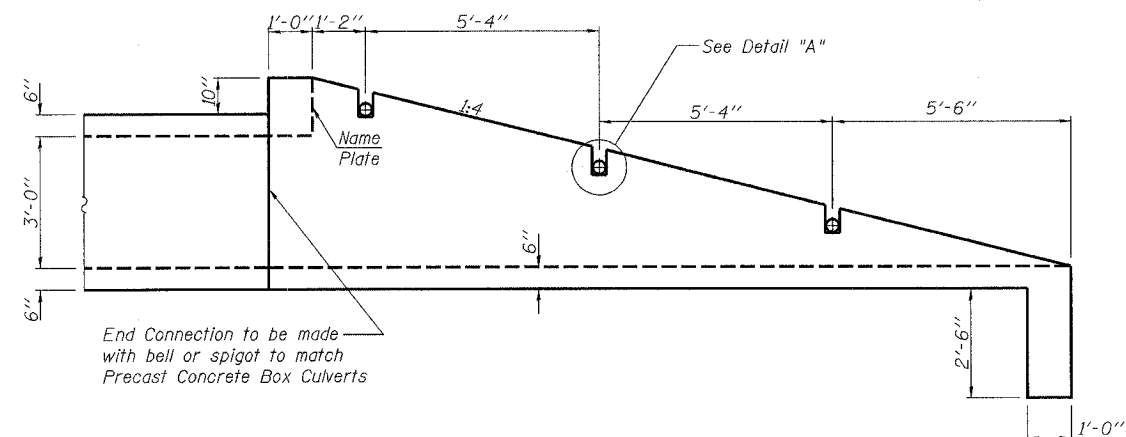
Steel Pipes shall conform to A.S.T.M. A-53 (Type E or S) Grade B, Schedule 40. Contractor shall field verify pipe length.

Steel Plates shall conform to AASHTO M 270 and shall be galvanized conforming to AASHTO M-111.

See Plan and Profile Sheet 36 of 174 for more information.

The Contractor shall submit four copies of the required shop drawings for review and approval to the Bureau of Bridges and Structures, 2300 South Dirksen Parkway, Springfield, IL 62764. After approval of initial submittal, the contractor shall submit one set of shop drawings to the Engineer of Materials, 126 East Ash Street, Springfield, IL 62706, and eight (8) sets of shop drawings, to be distributed to:

- District 2 District Engineer (1)
- Fabricator (1)
- Contractor (1)
- Resident Engineer (2)
- District Bureau of Materials (2)



PROFILE VIEW

STATION 10369+83.25
 BUILT 2007 BY
 STATE OF ILLINOIS
 F.A.P. RT. 505 SEC 110RS-1, 111RS-3
 LOADING HS20
 STR. NO. 089-1201

NAME PLATE

See Std. 515001
 Located on the SE Headwall.

BOX CULVERT END SECTIONS ARE TO BE PRECAST. CONTRACTOR HAS THE OPTION OF USING CAST-IN-PLACE END SECTIONS. FOR EITHER TYPE OF END SECTION, THE CONTRACTOR IS REQUIRED TO SUBMIT DESIGN CALCULATIONS TO BE APPROVED BY THE ENGINEER. THE DESIGN CALCULATIONS SHALL BE PREPARED AND SEALED BY AN ILLINOIS LICENSED STRUCTURAL ENGINEER. IF THE CONTRACTOR ELECTS TO USE CAST-IN-PLACE END SECTIONS, NO ADJUSTMENTS IN COSTS OF THE END SECTIONS WILL BE ALLOWED.

<p>Excellence through Ownership</p> <p>200 West Front Street Wheaton, IL 60187</p>	ILLINOIS DEPARTMENT OF TRANSPORTATION F.A.P. ROUTE 505 (IL 75) ILLINOIS ROUTE 75 BOX CULVERT END SECTION, CULVERT NO. 9 RT./LT. STA. 10369+83.25 STRUCTURE NO. 089-1201
	DATE: 12/6/06 DRAWN BY JMT CHECKED BY WJV