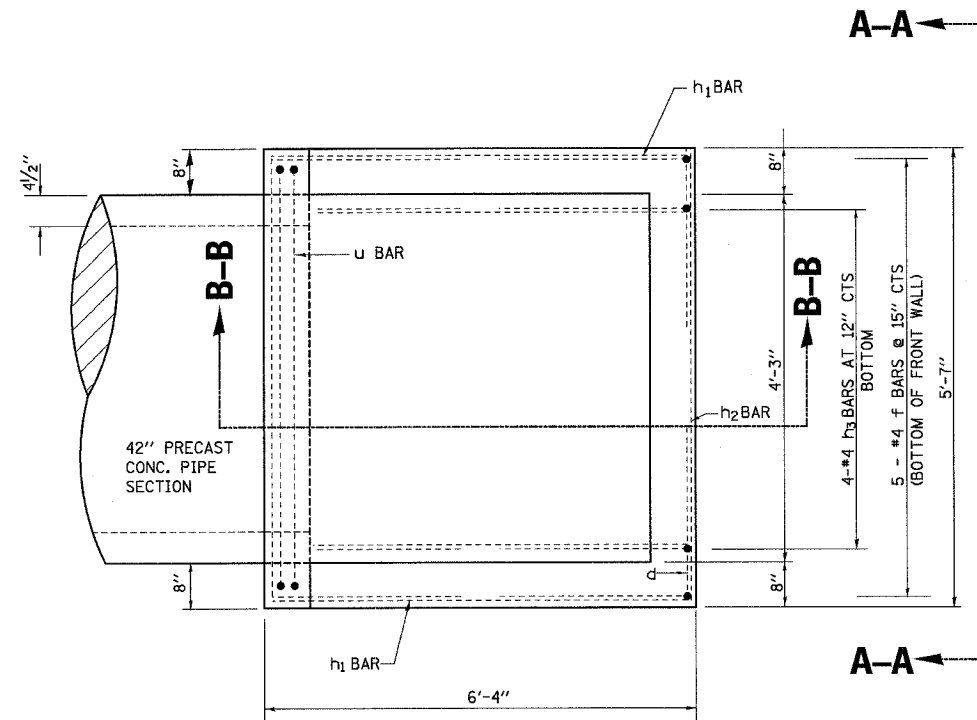


# DROP BOX NO. 6

RT STA. 10306 + 90.06

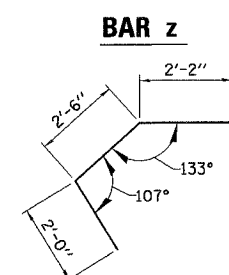
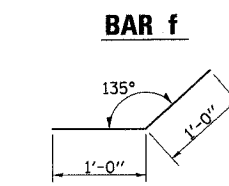
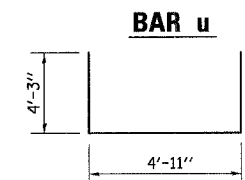
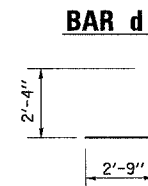
F.A.P. RTE.	SECTION	COUNTY	TOTAL SHEETS	SHEET NO.
*	**	STEPHENSON	174	78
STA. TO STA.				
FED. ROAD DIST. NO. ILLINOIS FED. AID PROJECT				
*FAP 505 (IL 75)			CONTRACT NO. 64C32	
**110RS-1, 111RS-3				

## PLAN

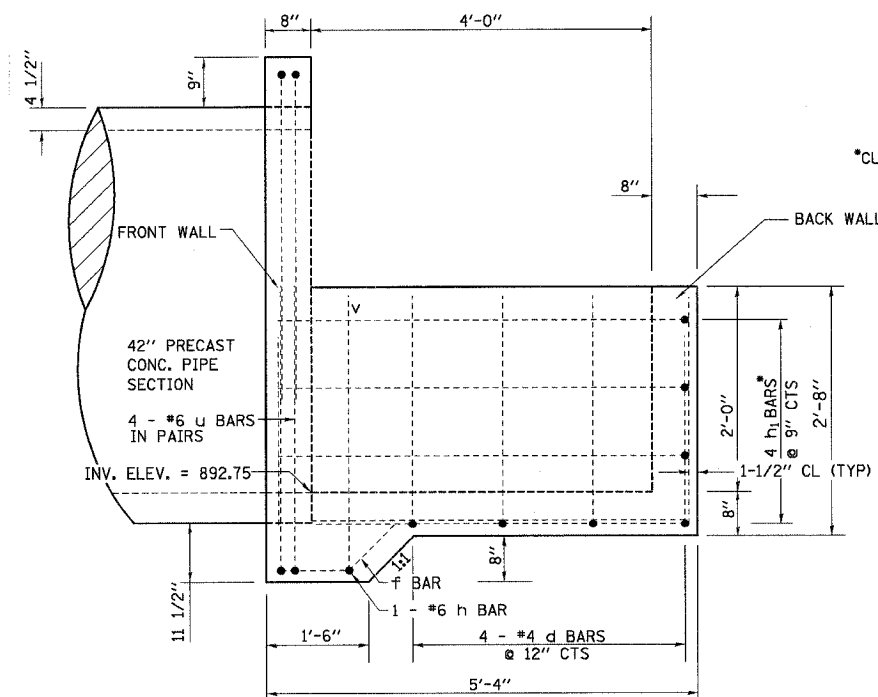


## BILL OF MATERIALS (FOR REINFORCEMENT)

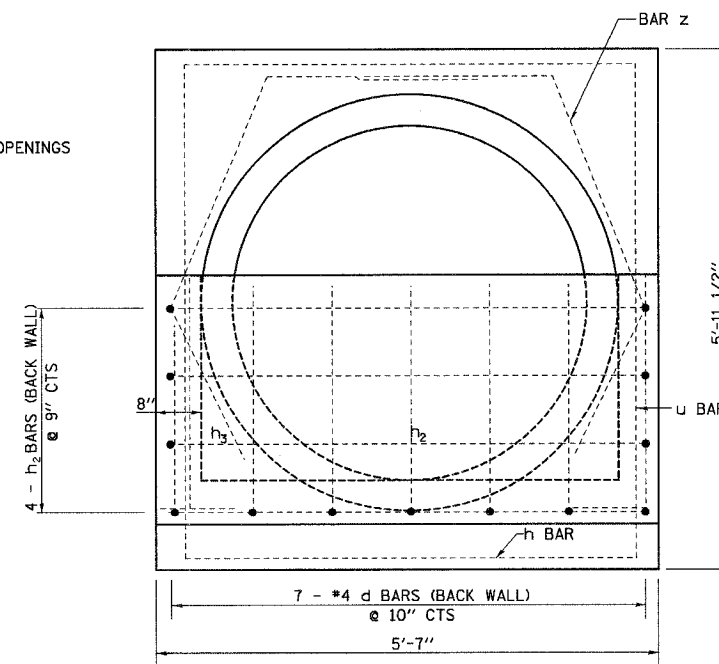
BAR	SIZE	NO.	LENGTH	WEIGHT (LB)
d	4	15	5'-1"	50.93
f	4	5	2'-0"	6.68
h	6	1	5'-3"	7.89
h <sub>1</sub>	4	8	5'-0"	26.72
h <sub>2</sub>	4	4	5'-3"	14.03
h <sub>3</sub>	4	4	4'-4"	11.57
u	6	4	13'-5"	80.66
v	4	2	3'-0"	4.01
z	4	2	6'-8"	8.91
DESCRIPTION			UNIT	QTY
CONCRETE STRUCTURES			CU YD	1.9
REINFORCEMENT BARS			LB	220



## SECTION B-B



## VIEW A-A



## GENERAL NOTES:

SLOPE FLOW LINE OF THE DROP BOX AT THE SAME RATE AS THE FLOW LINE OF THE BOX.  
SEE PLAN AND PROFILE SHEET 32 OF 174 FOR MORE INFORMATION.

<p>Excellence through Ownership</p> <p>200 West Front Street Wheaton, IL 60187</p>	ILLINOIS DEPARTMENT OF TRANSPORTATION
	<p>F.A.P. ROUTE 505 (IL 75) ILLINOIS ROUTE 75 DROP BOX NO. 6 RT. STA. 10306+90.06</p>

DATE: 12/6/06 DRAWN BY JMT CHECKED BY WJV

12/12/2006 K:\1115880\Structures\3P\_Submittal\_1027495\Combe-Blaudorf\_Structures\DRP\DRP-Edgn