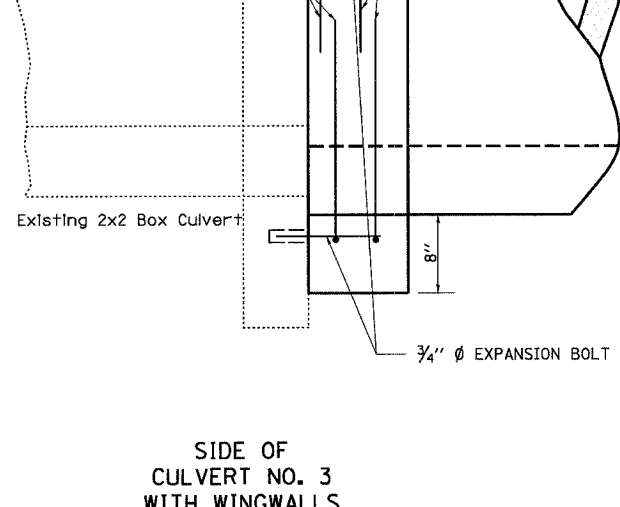
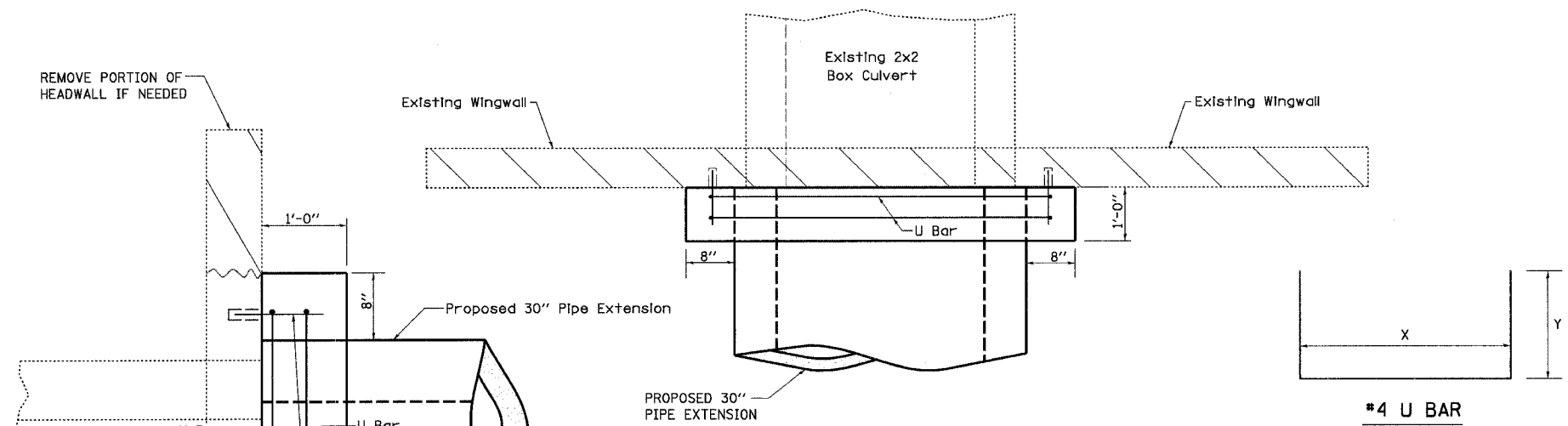


CONCRETE COLLARS FOR PIPE OR BOX CULVERT EXTENSIONS

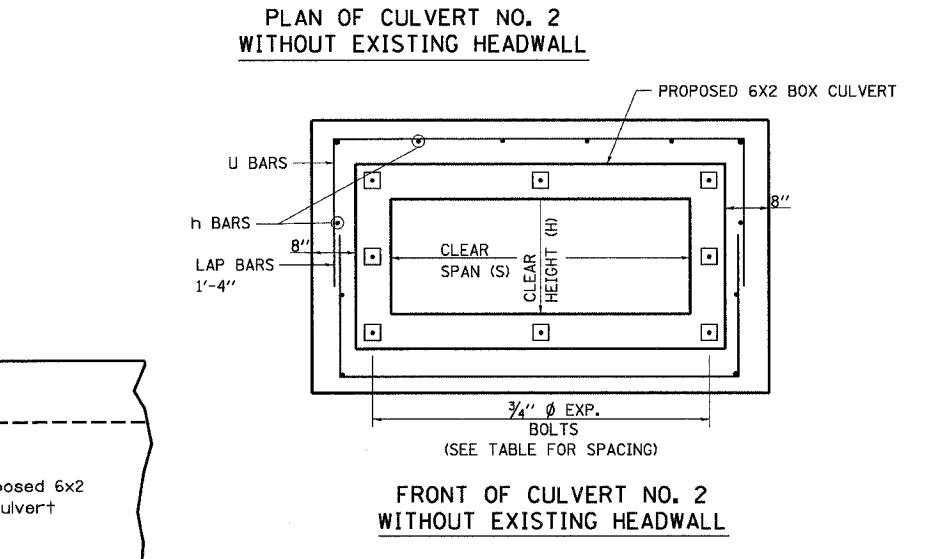
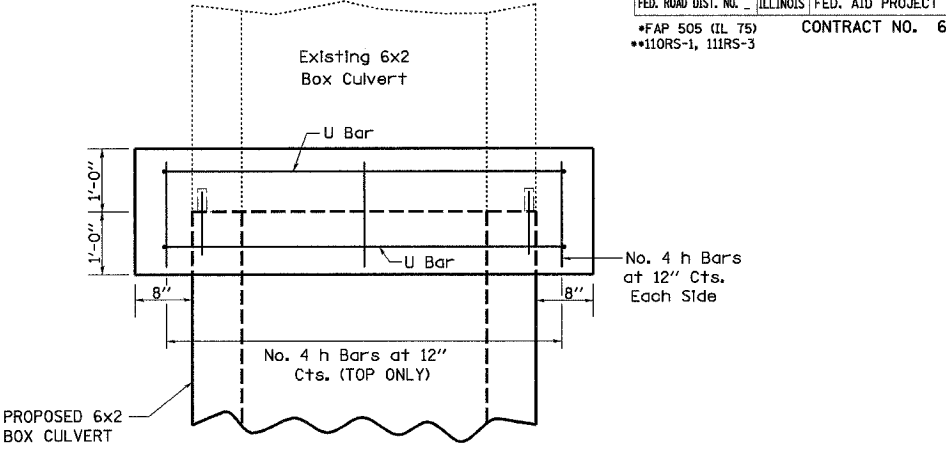
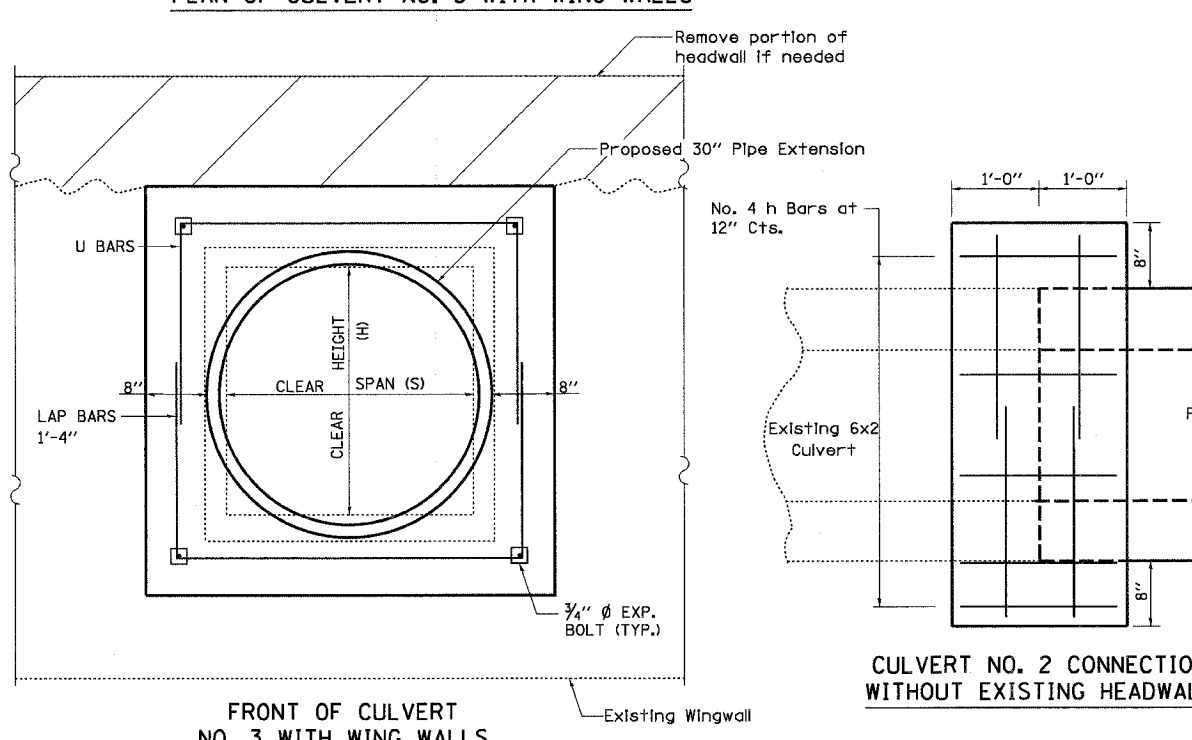
F.A.P. RTE.	SECTION	COUNTY	TOTAL SHEETS	SHEET NO.
•	**	STEPHENSON	174	76
STA.	TO STA.			
FED. ROAD DIST. NO.	ILLINOIS	FED. AID PROJECT		
•FAP 505 (IL 75) •110RS-1, 111RS-3	CONTRACT NO.		64C32	



PLACEMENT DETAILS FOR EXPANSION BOLTS

H OR S	NUMBER OF EXPANSION BOLTS REQUIRED PER SIDE			
	EXTENSIONS < 15'	SPACING	EXTENSIONS > 15'	SPACING
2'-0"	*		*	
2'-6"	2	1'-6"	2	1'-6"
3'-0"	2	2'-0"	2	2'-0"
4'-0"	3	1'-6"	3	1'-6"
5'-0"	4	1'-4"	3	2'-0"
6'-0"	5	1'-3"	4	1'-8"
7'-0"	5	1'-6"	4	2'-0"
8'-0"	6	1'-3"	5	1'-9"
9'-0"	6	1'-7"	5	2'-0"
10'-0"	7	1'-6"	6	1'-9"
11'-0"	8	1'-5"	6	2'-0"
12'-0"	8	1'-7"	7	1'-10"

* MINIMUM ONE PER SIDE



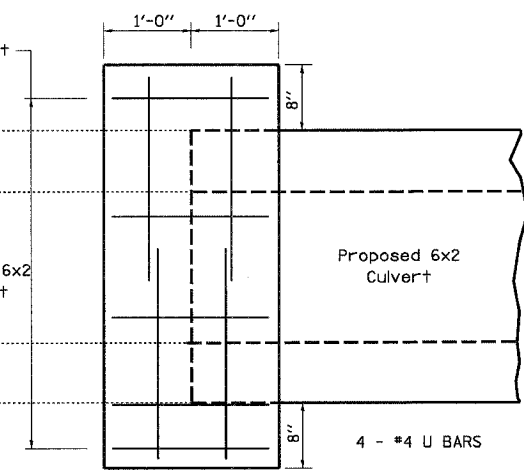
General Notes

Concrete Collars shall be constructed of Class SI Concrete in accordance with Section 503 of the Standard Specifications

Reinforcement bars shall conform to Section 508 of the Standard Specifications.

The concrete will be paid for at the contract unit price per cubic yard for CONCRETE COLLAR. Reinforcement will be paid for at the contract unit price per pound for REINFORCEMENT BARS. Expansion Bolts, when required, will be paid for at the contract unit price each for EXPANSION BOLTS of the size indicated, which price shall include furnishing, drilling holes, and installing the expansion bolts complete in place. These bolts shall extend at least 8" into the new concrete.

#4 U BAR



Bill of Materials

CULVERT NO.	STATION	DIMENSIONS		h Bar	U Bar	EXPANSION BOLTS	CONCRETE COLLAR	REINF. BARS	CONCRETE REMOVAL
		X	Y						
2	10225+53.42	7'-10"	2'-7"	17	4	13'-0"	1.15	52	
3	10226+32.68	3'-9"	2'-7"	0	2	8'-11"	0.45	24	0.75
Total						16	1.6	80	0.75

All h bars 18" Long

rjngroup
 Excellence through Ownership
 200 West Front Street
 Wheaton, IL 60187

ILLINOIS DEPARTMENT OF TRANSPORTATION
 F.A.P. ROUTE 505 (IL 75)
 ILLINOIS ROUTE 75
 CONCRETE COLLARS, CULVERT NO. 2 & 3
 RT. STA. 10225+53.42, 10226+32.68
 DATE: 12/6/06
 DRAWN BY JMT
 CHECKED BY WJV

12/6/2006 K:\11195000\Structure\3P_Submittal_082406\Culvert_283.dgn