

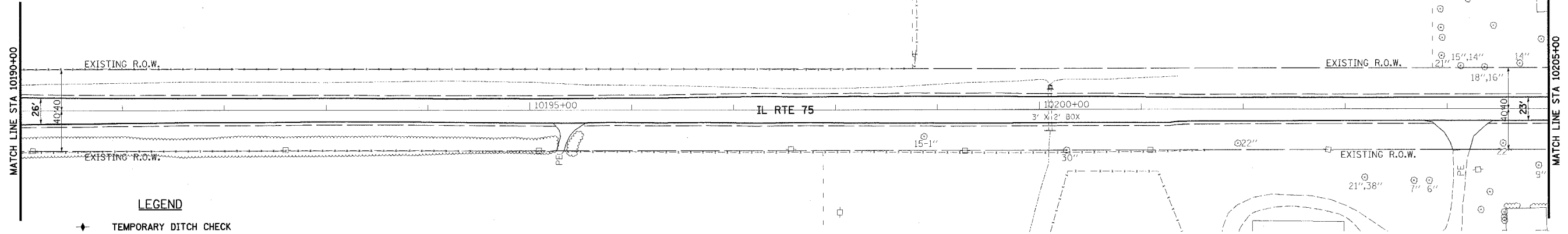
WALTER
OPPENHEIMER

RUTH ANN &
HUTCHISON BATES



F.A.P. RTE.	SECTION	COUNTY	TOTAL SHEETS	SHEET NO.
505	110RS-1, 111RS-3	STEPHENSON	174	52
STA. 10190+00		TO STA. 10205+00		
FED. ROAD DIST. NO.		ILLINOIS FED. AID PROJECT		
CONTRACT NO. 64C32				

ALLAN R. &
LISA A. HEILMAN



- LEGEND**
- ◆ TEMPORARY DITCH CHECK
 - ⊕ INLET AND PIPE PROTECTION
 - PERIMETER EROSION BARRIER
 - AGGREGATE DITCH, 12" OR STONE DUMPED RIPRAP, CLASS A4 OR STONE RIPRAP, CLASS A3

DEAN D. & KRISTI K.
PARRISH

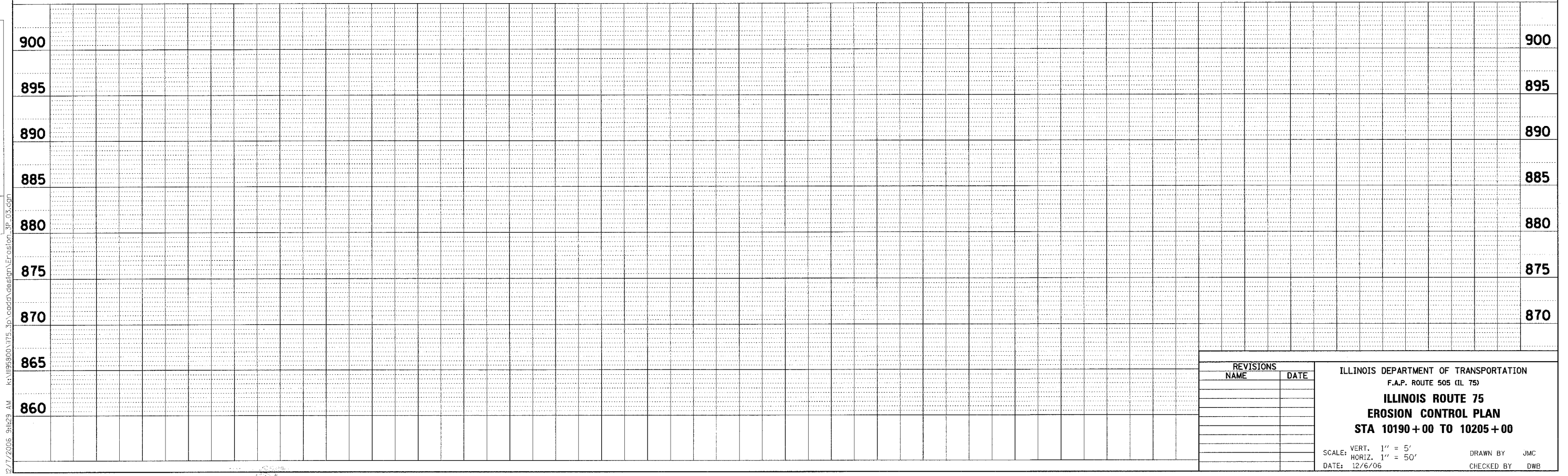


PLAN

SURVEYED	BY	DATE
PLOTTED		
CHECKED		
NO. OF DAYS CHECKED		
NOTE BOOK NO.		
FILE NAME		

PROFILE

SURVEYED	BY	DATE
PLOTTED		
CHECKED		
NO. OF DAYS CHECKED		
NOTE BOOK NO.		
FILE NAME		



REVISIONS		ILLINOIS DEPARTMENT OF TRANSPORTATION F.A.P. ROUTE 505 (IL 75) ILLINOIS ROUTE 75 EROSION CONTROL PLAN STA 10190+00 TO 10205+00
NAME	DATE	
		SCALE: VERT. 1" = 5' HORIZ. 1" = 50' DATE: 12/6/06
DRAWN BY JMC		CHECKED BY DWB

K:\1095300\115_3p\cadd\design\erosion_3p_03.dgn 12/7/2006 9:42:3 AM