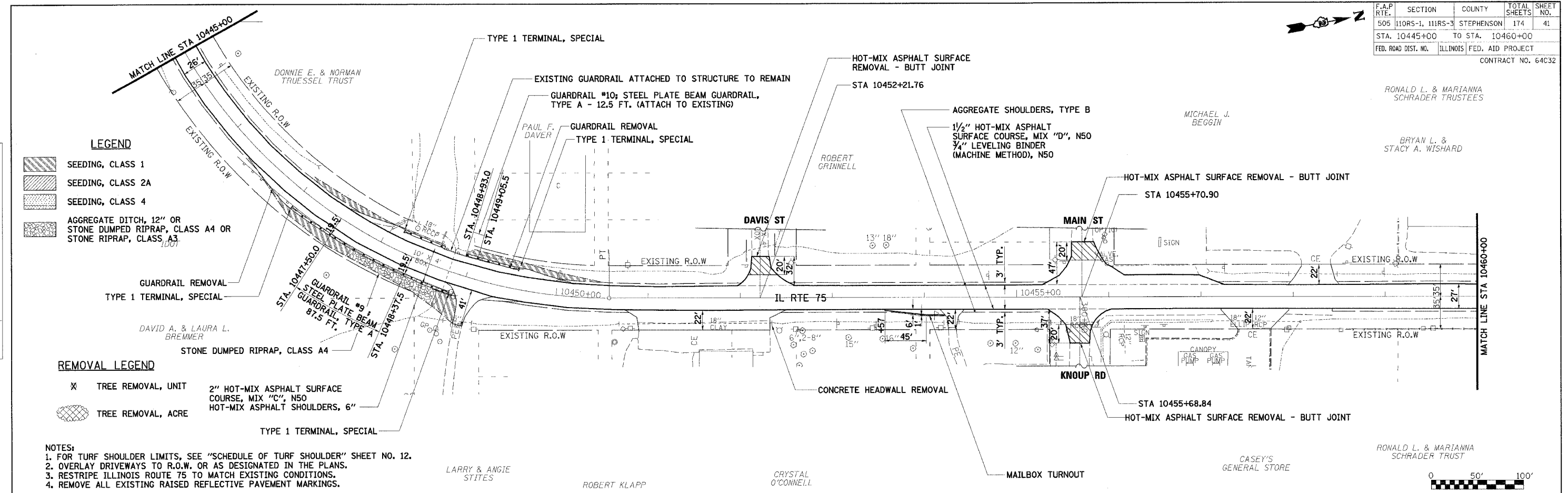


F.A.P. RTE.	SECTION	COUNTY	TOTAL SHEETS	SHEET NO.
505	110RS-1, 111RS-3	STEPHENSON	174	41
STA. 10445+00		TO STA. 10460+00		
FED. ROAD DIST. NO.		ILLINOIS FED. AID PROJECT		
CONTRACT NO. 64C32				

RONALD L. & MARIANNA SCHRADER TRUSTEES

BRYAN L. & STACY A. WISHARD

RONALD L. & MARIANNA SCHRADER TRUST



LEGEND

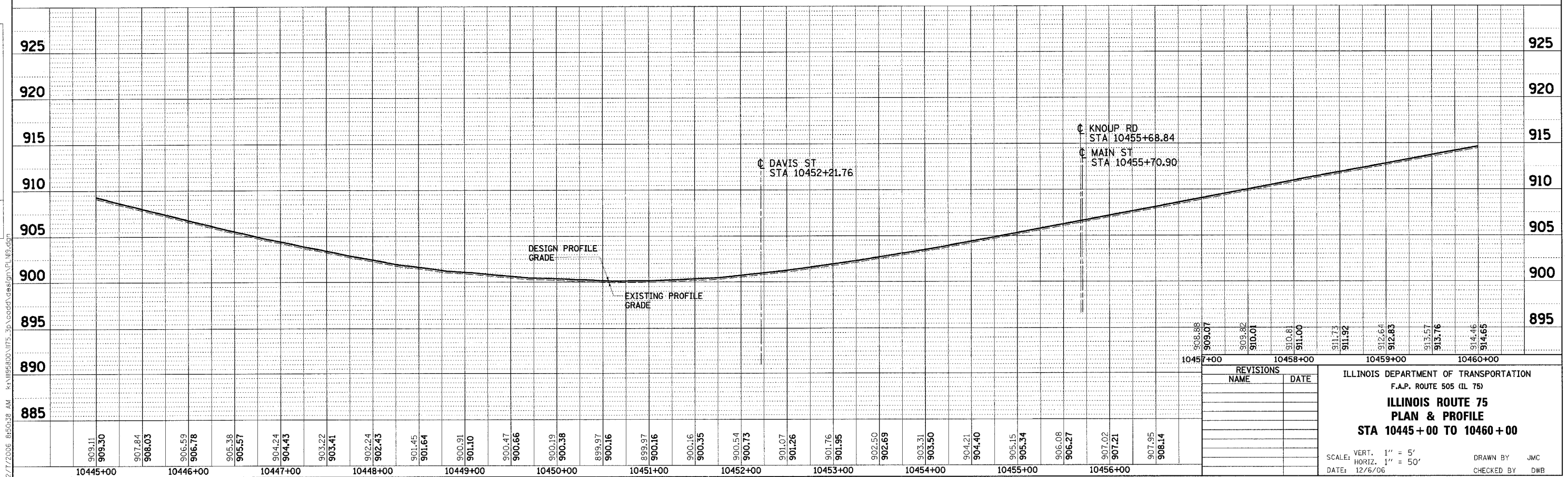
- SEEDING, CLASS 1
- SEEDING, CLASS 2A
- SEEDING, CLASS 4
- AGGREGATE DITCH, 12" OR STONE DUMPED RIPRAP, CLASS A4 OR STONE RIPRAP, CLASS A3

REMOVAL LEGEND

- TREE REMOVAL, UNIT
- TREE REMOVAL, ACRE
- 2" HOT-MIX ASPHALT SURFACE COURSE, MIX "C", N50
- HOT-MIX ASPHALT SHOULDERS, 6"

NOTES:

1. FOR TURF SHOULDER LIMITS, SEE "SCHEDULE OF TURF SHOULDER" SHEET NO. 12.
2. OVERLAY DRIVEWAYS TO R.O.W. OR AS DESIGNATED IN THE PLANS.
3. RESTRIPE ILLINOIS ROUTE 75 TO MATCH EXISTING CONDITIONS.
4. REMOVE ALL EXISTING RAISED REFLECTIVE PAVEMENT MARKINGS.



REVISIONS	
NAME	DATE

ILLINOIS DEPARTMENT OF TRANSPORTATION
F.A.P. ROUTE 505 (IL 75)
**ILLINOIS ROUTE 75
PLAN & PROFILE
STA 10445+00 TO 10460+00**

SCALE: VERT. 1" = 5'
HORIZ. 1" = 50'
DATE: 12/6/06

DRAWN BY JMC
CHECKED BY DWB

PLAN	SURVEYED	DATE
NOTE BOOK NO.	BY	
	DATE	
	BY	
	DATE	
	BY	
	DATE	

PROFILE	SURVEYED	DATE
NOTE BOOK NO.	BY	
	DATE	
	BY	
	DATE	
	BY	
	DATE	

12/7/2006 8:50:38 AM k:\m56800\1175_3p\cadd\design\pl_n9.dgn