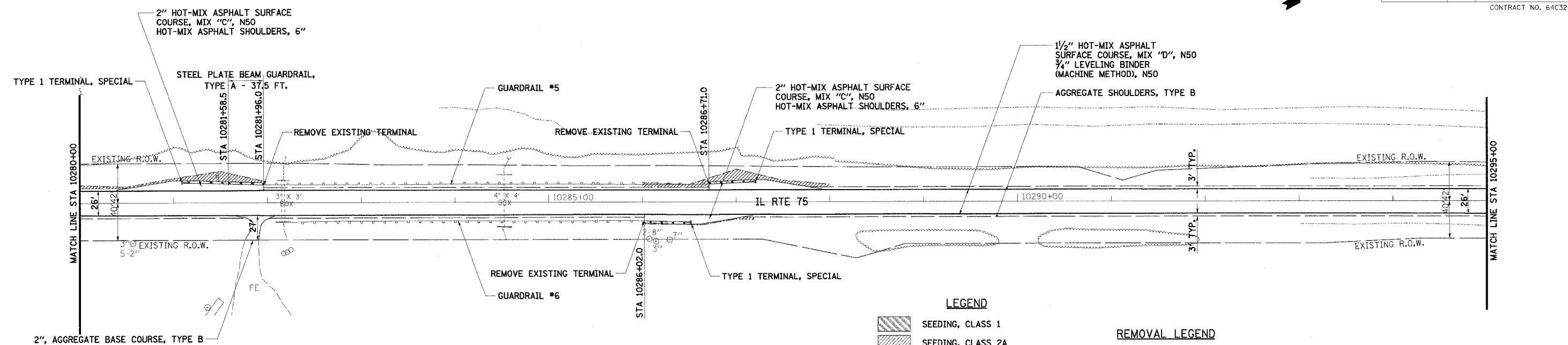


F.A.P. RTE.	SECTION	COUNTY	TOTAL SHEETS	SHEET NO.
505	110RS-1, 111RS-3	STEPHENSON	174	31
STA. 10280+00	TO STA. 10295+00			
FED. ROAD DIST. NO.	ILLINOIS	FED. AID PROJECT		
CONTRACT NO. 64C32				



GILT EDGE FARMS INC.

DATE
BY
DESIGNED
PLOTTED
CHECKED
DATE
NO.



- NOTES:
- FOR TURF SHOULDER LIMITS, SEE "SCHEDULE OF TURF SHOULDER" SHEET NO. 12.
 - OVERLAY DRIVEWAYS TO R.O.W. OR AS DESIGNATED IN THE PLANS.
 - RESTRIPE ILLINOIS ROUTE 75 TO MATCH EXISTING CONDITIONS.
 - REMOVE ALL EXISTING RAISED REFLECTIVE PAVEMENT MARKINGS.

LEGEND

SEEDING, CLASS 1

SEEDING, CLASS 2A

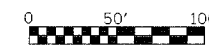
SEEDING, CLASS 4

AGGREGATE DITCH, 12" OR STONE DUMPED RIPRAP, CLASS A4 OR STONE RIPRAP, CLASS A3

REMOVAL LEGEND

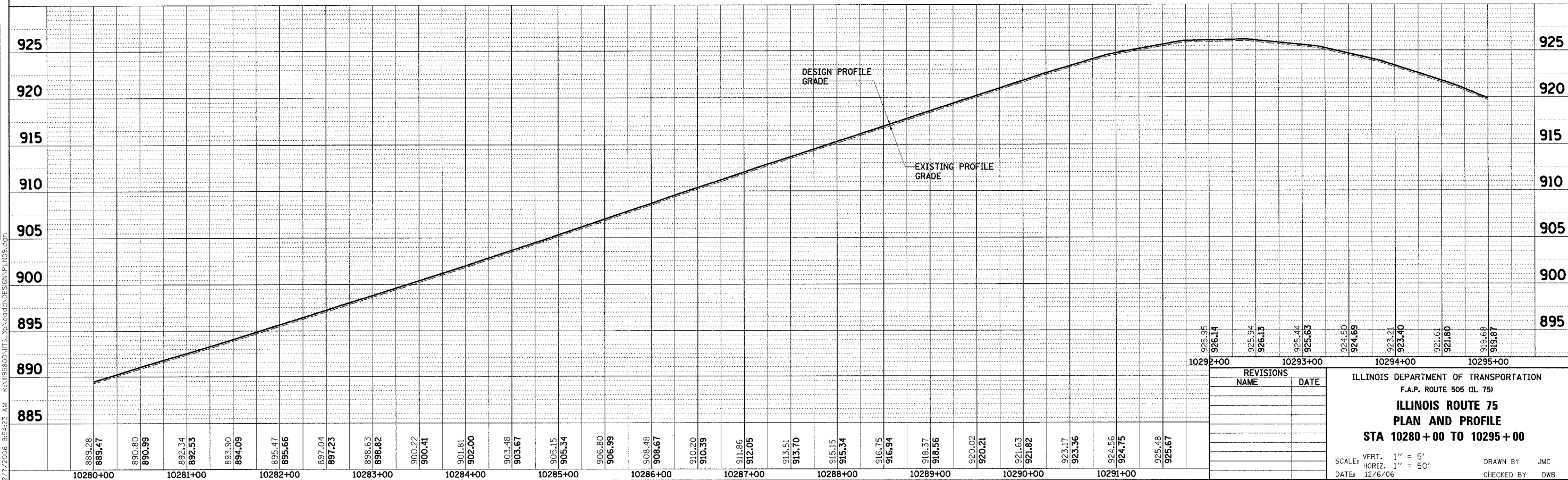
✕ TREE REMOVAL, UNIT

⊗ TREE REMOVAL, ACRE



GILT EDGE FARMS INC.

DATE
BY
DESIGNED
PLOTTED
CHECKED
DATE
NO.



ILLINOIS DEPARTMENT OF TRANSPORTATION

F.A.P. ROUTE 505 (IL 75)

ILLINOIS ROUTE 75

PLAN AND PROFILE

STA 10280 + 00 TO 10295 + 00

SCALE: VERT. 1" = 5'

HORIZ. 1" = 50'

DATE: 12/6/06

DRAWN BY: JMC

CHECKED BY: DWB

REVISIONS:

NAME	DATE

2/7/2006 9:54:23 AM K:\N195800\IT5_3p\Cadd\DESIGN\PLN09.dgn