

F.A.P. RTE.	SECTION	COUNTY	TOTAL SHEETS	SHEET NO.
*	**	CARROLL	548	100

STA.	TO STA.
FED. ROAD DIST. NO.	ILLINOIS FED. AID PROJECT

\* ROUTE 17 (US 52 / IL 64)  
\*\* (1-2RS & 3-1RS-1)

Drainage Area = 2.6 Acres		Drainage Area PR = 2.6 Acres			
Existing Low Grade Elevation: 833.82 ft. @ 344+96		Proposed Low Grade Elevation: 833.82 ft. @ 344+96			
Flood Year	Frequency	Discharge EX cfs	Discharge PR cfs	Headwater Elev. (ft) Existing	Headwater Elev. (ft) Proposed
Ten-Year	10	7.0	7.0	828.43	828.53
Design	50	9.0	9.0	828.59	828.72
Base	100	11.0	11.0	828.75	828.89
EX Overtopping	>500				
PR Overtopping	>500				
Max Calc	500	15.0	15.0	829.03	829.21

JOHN F. BREUNINS JR.

- NOTES:
- EXISTING CULVERT TO BE CLEANED PRIOR TO CULVERT LINER INSERTION.
  - EXISTING CULVERT TO BE CLEANED PRIOR TO CULVERT EXTENSION.
  - GRADE AND SHAPE CHANNEL AS NECESSARY.

US RTE 52  
EXIST. CURVE 320  
PI STA. = 346+26.11  
 $\Delta = 29^\circ 29' 46''$  (RT)  
D = 2° 29' 00"  
R = 2,307.17'  
T = 607.34'  
L = 1,187.74'  
E = 78.60'  
e = ----  
T.R. = ----  
S.E. RUN = ----  
P.C. STA. = 340+18.77  
P.T. STA. = 352+06.51

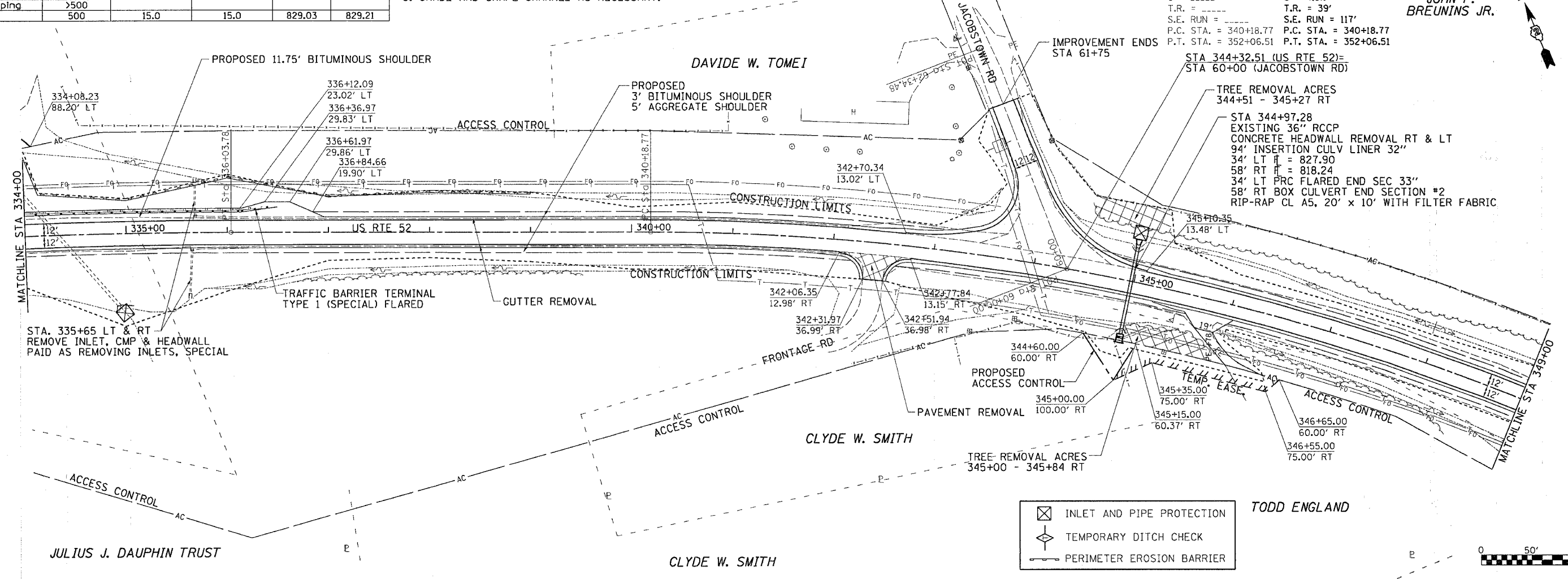
PROP. CURVE S320  
PI STA. = 346+26.11  
 $\Delta = 29^\circ 29' 46''$  (RT)  
D = 2° 29' 00"  
R = 2,307.17'  
T = 607.34'  
L = 1,187.74'  
E = 78.60'  
e = 4.5%  
T.R. = 39'  
S.E. RUN = 117'  
P.C. STA. = 340+18.77  
P.T. STA. = 352+06.51

JOHN F. BREUNINS JR.

DATE	BY

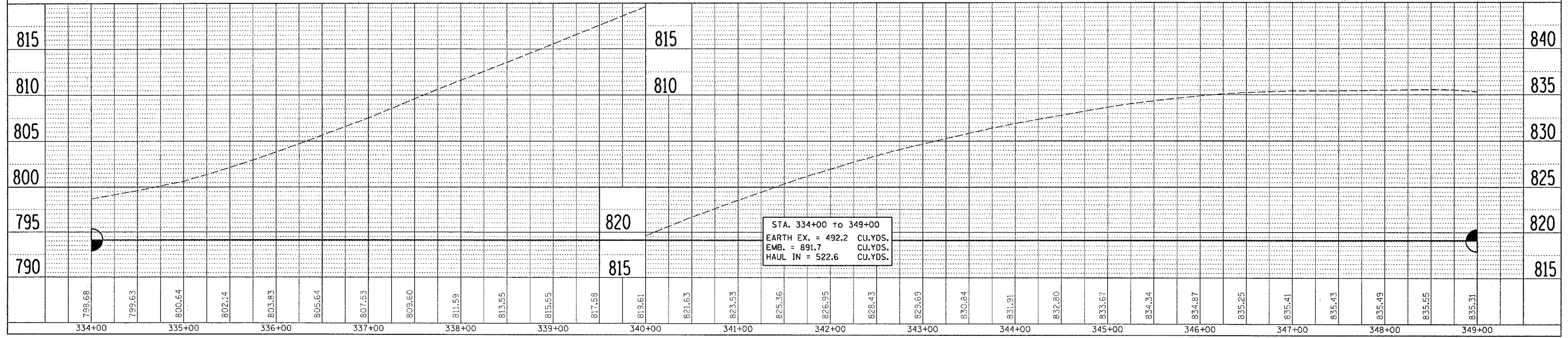
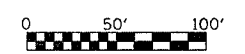
  

PLAN	DATE	BY



- INLET AND PIPE PROTECTION
- TEMPORARY DITCH CHECK
- PERIMETER EROSION BARRIER

TODD ENGLAND



DATE	BY

PROFILE	DATE	BY

DATE-TIME  
CON-SPEC  
REF  
REF  
REF