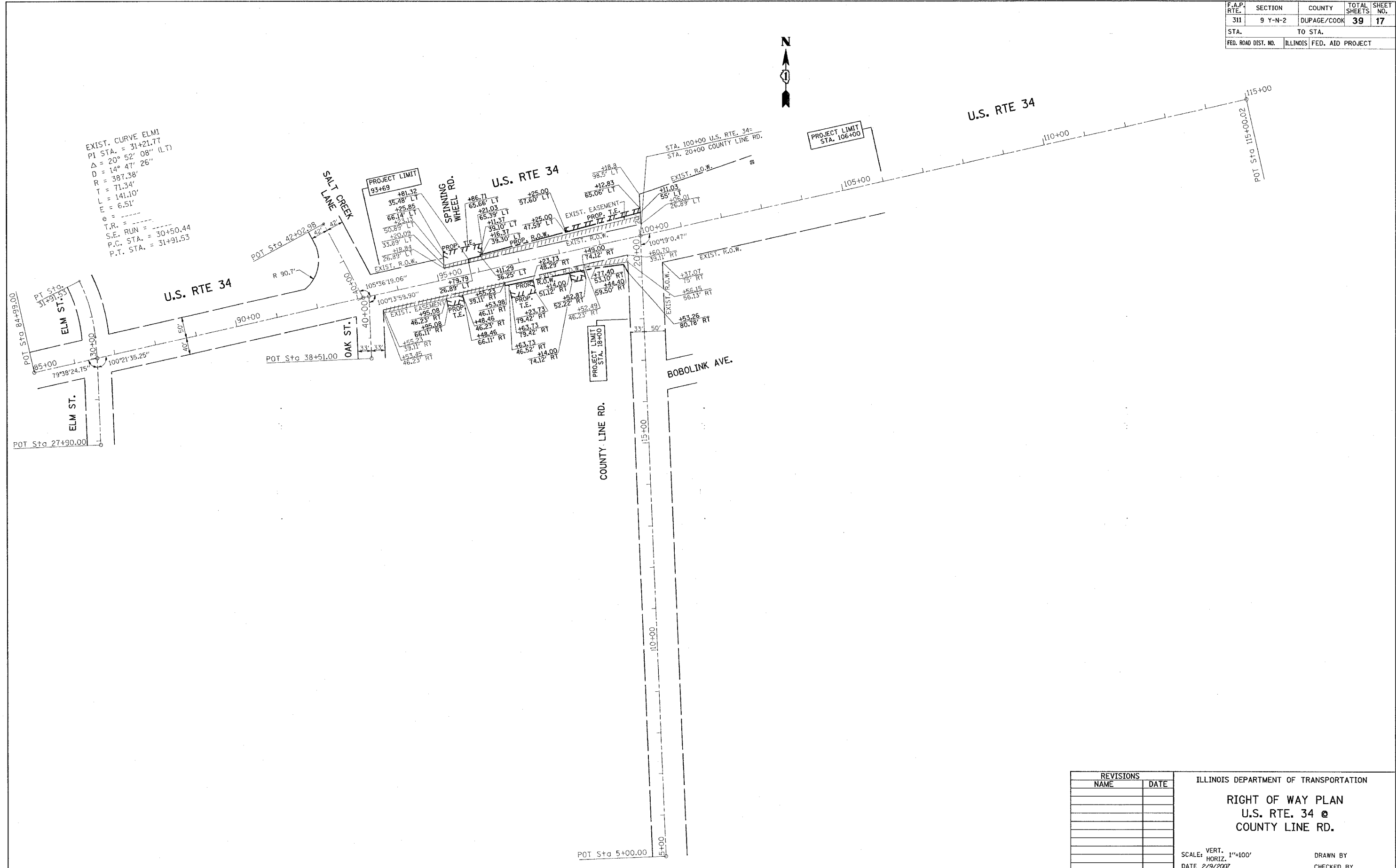
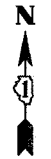


F.A.P. RTE.	SECTION	COUNTY	TOTAL SHEETS	SHEET NO.
311	9 Y-N-2	DUPAGE/COOK	39	17
STA.		TO STA.		
FED. ROAD DIST. NO.		ILLINOIS FED. AID PROJECT		



EXIST. CURVE ELMI
 PI STA. = 31+21.77
 $\Delta = 20^\circ 52' 08''$ (LT)
 $D = 14^\circ 47' 26''$
 $R = 387.38'$
 $T = 71.34'$
 $L = 141.10'$
 $E = 6.51'$
 $e =$
 $T.R. =$
 $S.E. RUN =$
 $P.C. STA. = 30+50.44$
 $P.T. STA. = 31+91.53$

PLOT DATE = 2/9/2007
 FILE NAME = c:\p\projects\106983\106983.dwg
 PLOT SCALE = 1/8"=1'-0"
 USER NAME = bevard

REVISIONS	
NAME	DATE

ILLINOIS DEPARTMENT OF TRANSPORTATION
RIGHT OF WAY PLAN
U.S. RTE. 34 @
COUNTY LINE RD.
 SCALE: VERT. 1"=100'
 HORIZ. 1"=100'
 DATE 2/9/2007
 DRAWN BY
 CHECKED BY