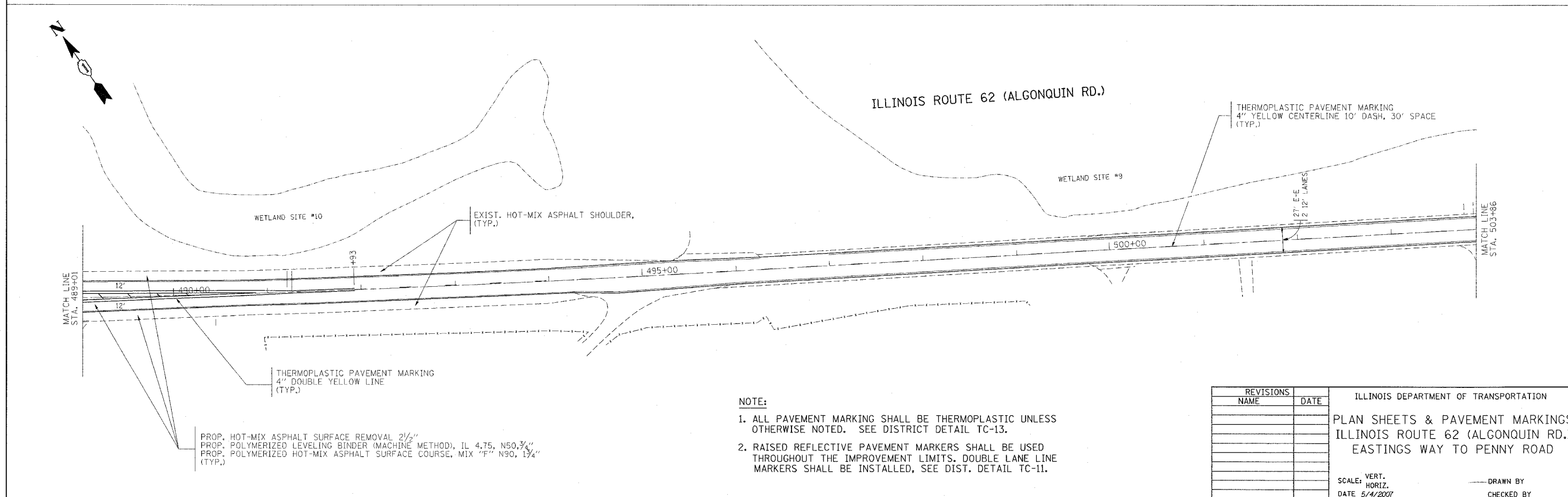
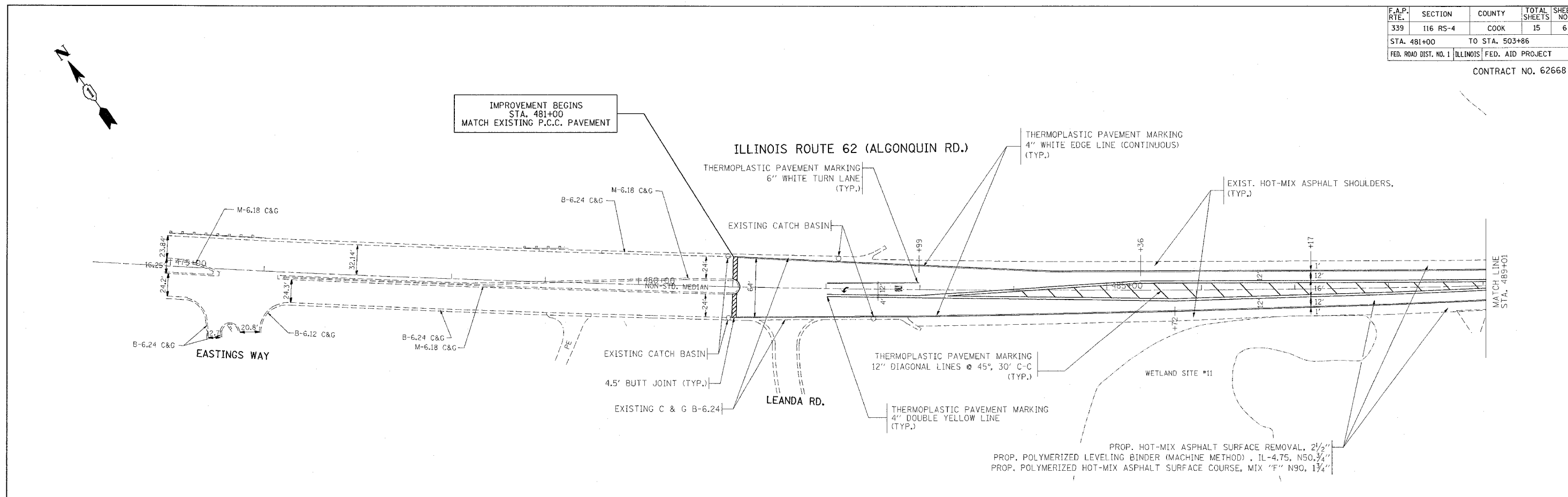


F.A.P. RTE.	SECTION	COUNTY	TOTAL SHEETS	SHEET NO.
339	116 RS-4	COOK	15	6
STA. 481+00		TO STA. 503+86		
FED. ROAD DIST. NO. 1		ILLINOIS FED. AID PROJECT		

CONTRACT NO. 62668



**NOTE:**

1. ALL PAVEMENT MARKING SHALL BE THERMOPLASTIC UNLESS OTHERWISE NOTED. SEE DISTRICT DETAIL TC-13.
2. RAISED REFLECTIVE PAVEMENT MARKERS SHALL BE USED THROUGHOUT THE IMPROVEMENT LIMITS. DOUBLE LANE LINE MARKERS SHALL BE INSTALLED, SEE DIST. DETAIL TC-11.

REVISIONS	DATE

ILLINOIS DEPARTMENT OF TRANSPORTATION  
 PLAN SHEETS & PAVEMENT MARKINGS  
 ILLINOIS ROUTE 62 (ALGONQUIN RD.)  
 EASTINGS WAY TO PENNY ROAD

SCALE: VERT. \_\_\_\_\_  
 HORIZ. \_\_\_\_\_  
 DATE 5/4/2007

DRAWN BY \_\_\_\_\_  
 CHECKED BY \_\_\_\_\_