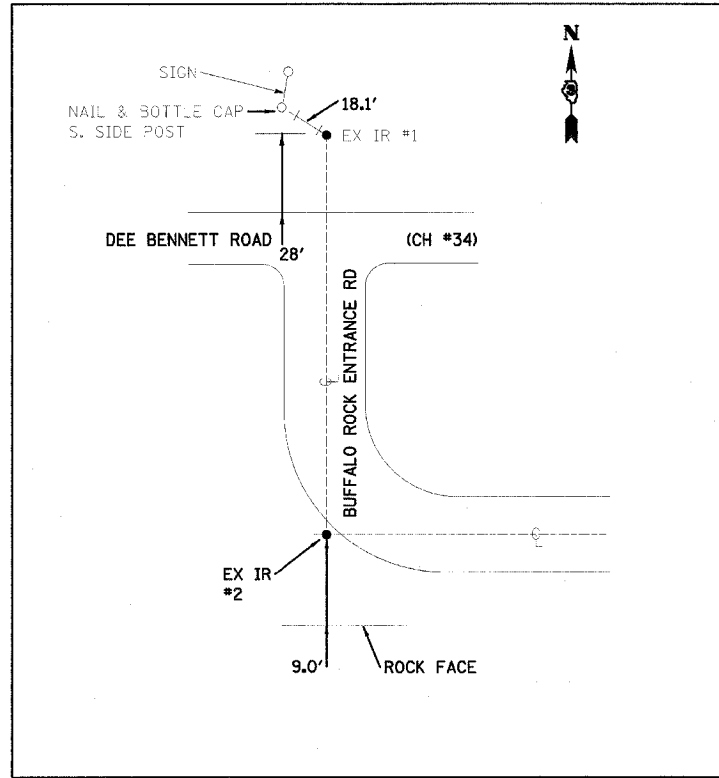
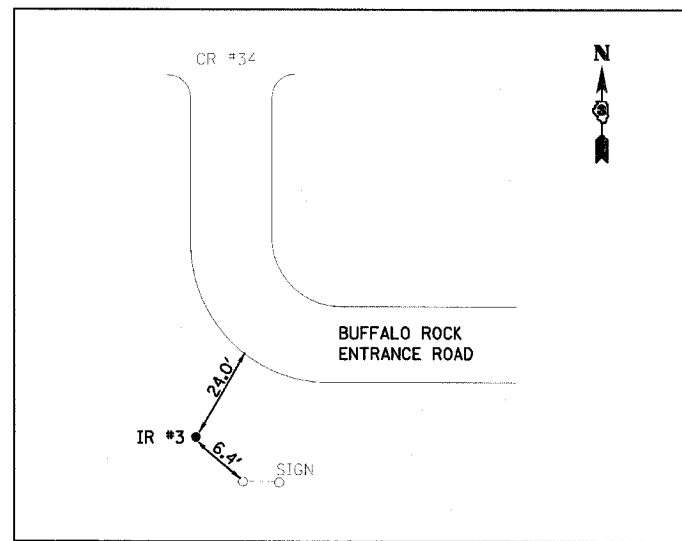


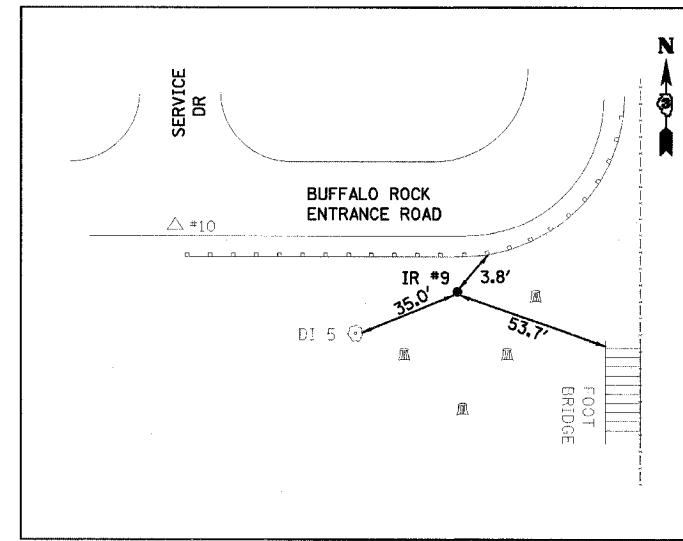
F.A. RTE.	SECTION	COUNTY	TOTAL SHEETS	SHEET NO.
	PARK ROADS	LASALLE	38	6
STA.		TO STA.		
FED. ROAD DIST. NO.	ILLINOIS	FED. AID PROJECT		
IDNR PROJECT NO. 02-03-020				



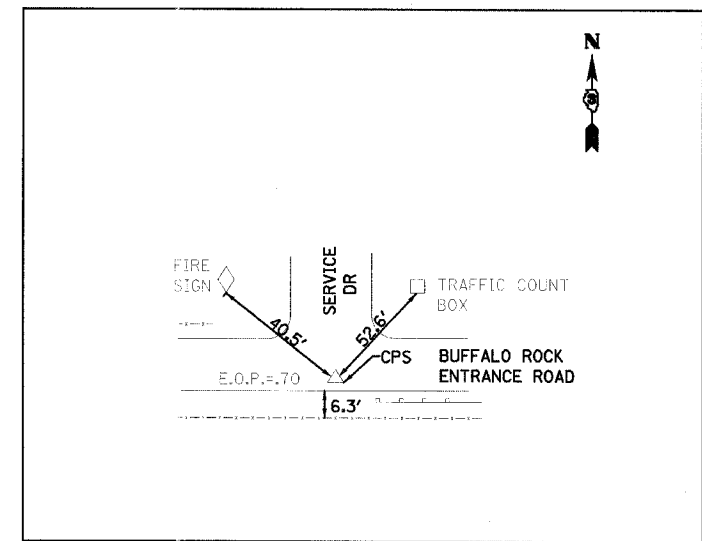
CONTROL POINT TIES #1 & #2
REF IRON ROD



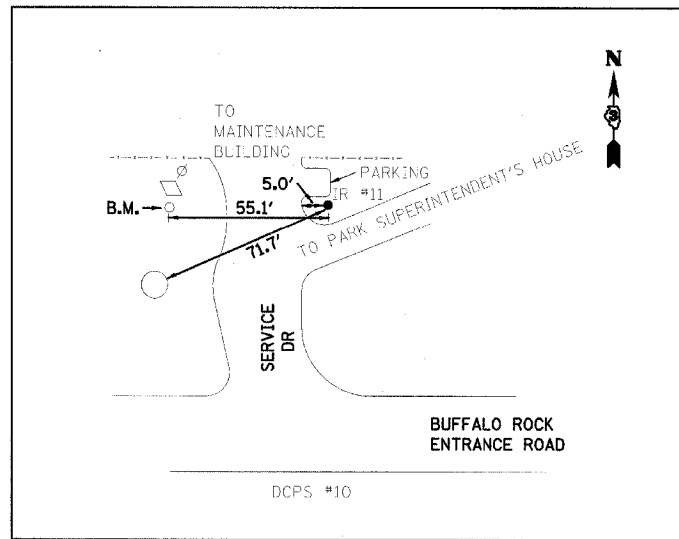
CONTROL POINT TIES #3
REF IRON ROD



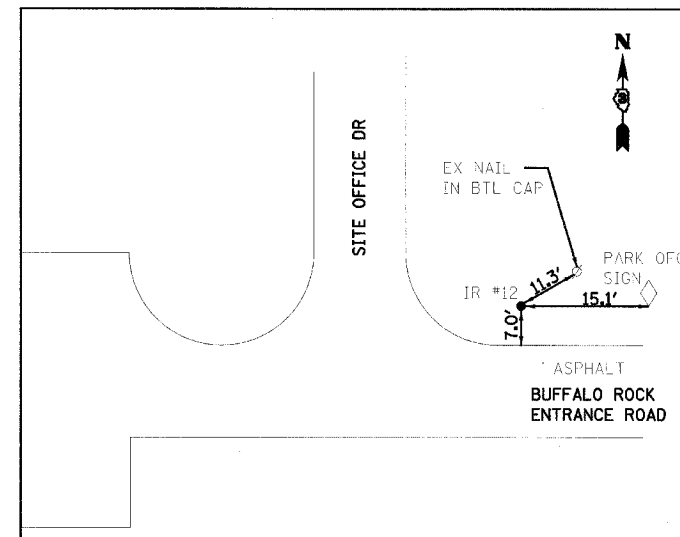
CONTROL POINT TIES #9
REF IRON ROD



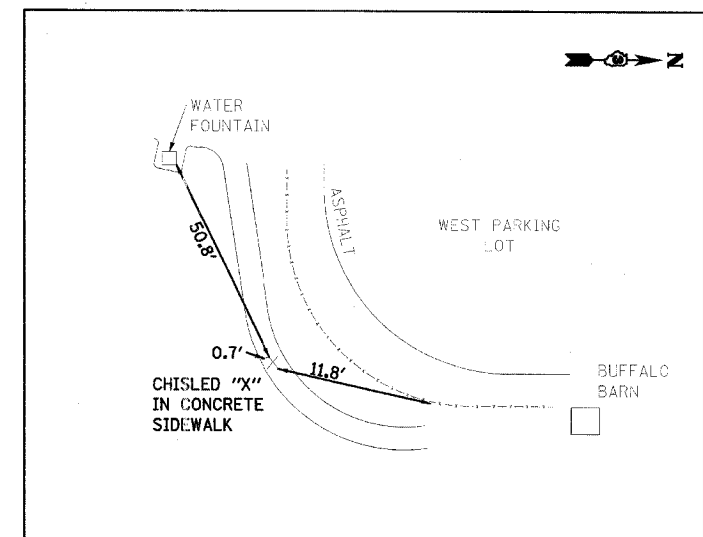
CONTROL POINT TIES #10
REF COTTON PICKER SPINDLE



CONTROL POINT TIES #11
REF IRON ROD



CONTROL POINT TIES #12
REF IRON ROD



CONTROL POINT TIES #13
REF CHISLED "X"

LAYOUT COORDINATE SCHEDULE			
POINT	NORTHING	EASTING	DESCRIPTION
1	10000.000	10000.000	IRON ROD
2	9618.999	10000.000	IRON ROD
3	9630.083	9989.826	IRON ROD
9	8992.901	11274.085	IRON ROD
10	8982.612	11105.576	COTTON PICKER SPINDLE
11	9316.326	11027.355	IRON ROD
12	9050.904	10712.319	IRON ROD
13	9107.081	10234.048	CHISLED "X" IN CONCRETE

BENCHMARKS:

RAILROAD SPIKE IN POWER POLE, NORTH SIDE OF ENTRANCE ROAD, LT STA 23+29. ELEV = 473.63

P.K. NAIL IN POWER POLE NORTH SIDE C.H. 34. WEST OF BUFFALO ROCK ENTRANCE. ELEV = 769.84

TOP NORTH END OF GUARDRAIL AT BEND IN CURVE NEAR STA 27+00, TOP OF I-BEAM POST. ELEV = 467.26

RAILROAD SPIKE IN POWER POLE, NORTH SIDE OF ENTRANCE ROAD, EAST SIDE OF ENTRANCE TO SITE OFFICE, RT STA 38+70. ELEV = 547.30

P.K. NAIL 1ST POWER POLE WEST OF SHED, NORTH OF BUFFALO PEN @ WEST PARKING AREA. ELEV = 549.91

P.K. NAIL IN SOUTHERN POWER POLE, SOUTHSIDE OF ENTRANCE ROAD @ GATE TO MAINTENANCE BUILDING. ELEV = 548.78

REVISIONS	
NAME	DATE

ILLINOIS DEPARTMENT OF TRANSPORTATION

IDOT / IDNR
BUFFALO ROCK STATE PARK
CONTROL POINT TIES

SCALE: VERT. / HORIZ. / DATE: 12/12/06
DRAWN BY: JJ
CHECKED BY: PJM