

06-14-2024 LETTING ITEM 173

UNION COUNTY HIGHWAY DEPARTMENT

PROPOSED HIGHWAY PLANS

LICK CREEK ROAD (F.A.S. 924 & F.A.U. 9914)
SECTION 22-00217-00-SP
PROJECT KGBS(670)
HSIP #20221206
UNION COUNTY
C-99-009-24

FOR INDEX OF SHEETS SEE SHEET NO. 2

FUNCTIONAL CLASSIFICATION

LICK CREEK ROAD
MINOR ARTERIAL
DESIGN SPEED: 55 MPH
ADT: 2900 (2020)

F.A. RTE.	SECTION	COUNTY	TOTAL SHEETS	SHEET NO.
"	22-00217-00-SP	UNION	13	1
HMG JOB NO 8399	ILLINOIS	CONTRACT NO. 99728		

* FAS 924 & FAU 9914

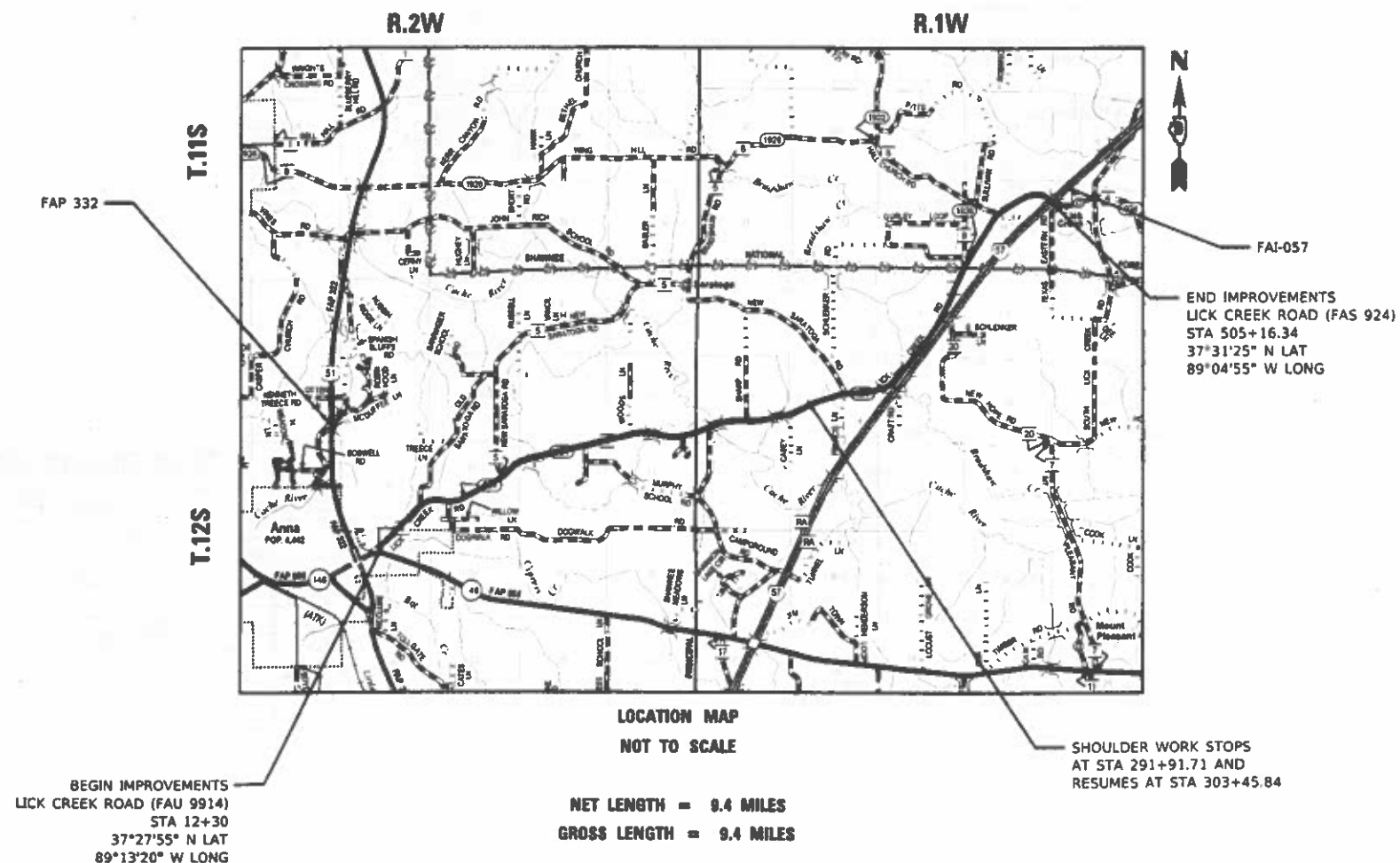


FULL SIZE PLANS HAVE BEEN PREPARED USING STANDARD ENGINEERING SCALES. REDUCED SIZED PLANS WILL NOT CONFORM TO STANDARD SCALES. IN MAKING MEASUREMENTS ON REDUCED PLANS, THE ABOVE SCALES MAY BE USED.

J.U.L.I.E.
JOINT UTILITY LOCATION INFORMATION FOR EXCAVATORS
1-800-892-0123
OR 811

HMG ENGINEERS, INC.
9360 HOLY CROSS LANE
BREESE, ILLINOIS 62230
888.HMG.ENGR
IL PROF. DESIGN FIRM NO. 184.000899
EXPIRES 04/30/2025

CONTRACT NO. 99728



NET LENGTH = 9.4 MILES
GROSS LENGTH = 9.4 MILES

AGENCY RESPONSIBLE FOR LETTING	
APPROVED	MARCH 27 2024 JEFF DENNY, COUNTY ENGINEER UNION COUNTY HIGHWAY DEPARTMENT
PASSED	April 9 2024 DISTRICT 9 ENGINEER OF LOCAL ROADS & STREETS
RELEASED FOR BID BASED ON LIMITED REVIEW	April 9 2024 REGION 6 ENGINEER



4/5/24
Mark O'Brien
MARK O'BRIEN, P.E., P.L.S.
ILLINOIS REGISTERED ENGINEER NO. 062-066496
REGISTRATION EXPIRES NOV. 30, 2025

INDEX OF SHEETS

1	COVER
2	INDEX OF SHEETS, GENERAL NOTES, AND HIGHWAY STANDARDS
3	SUMMARY OF QUANTITIES
4	TYPICAL SECTIONS
5-8	QUANTITY SCHEDULES
9-11	LOCATION MAP
12-13	DETAIL SHEETS

HIGHWAY STANDARDS

000001-08
001006
482001-02
642006-01
701001-02
701006-05
701011-04
701201-05
701301-04
701306-04
701311-03
701901-09
720001-01
720006-04
728001-01
BLR 21-9

HOT-MIX ASPHALT MIXTURE REQUIREMENTS

LOCATIONS	HOT-MIX ASPHALT SHOULDERS	
	TOP LIFT (2")	BOTTOM LIFT (4" MAX)
MIXTURE USE(S):	HMA SC MIX C N30	HMA BC N30
AG/PG:	PG64-22	PG64-22
ABR% (MAX):		
DESIGN AIR VOIDS:	4.0%, 30 GYRATION DESIGN	4.0%, 30 GYRATION DESIGN
MIXTURE COMPOSITION (GRADATION MIXTURE):	IL-9.5L	IL-19.0L
FRICTION AGGREGATE:	NONE	NONE
MIXTURE WEIGHT:	112 LBS/SQ YD/in	112 LBS/SQ YD/in
QUALITY MANAGEMENT PROGRAM:	QCQA	QCQA
SUBLOT SIZE:	3000	3000
MATERIAL TRANSFER DEVICE	NO	NO

GENERAL NOTES

1. THE PRIME CONTRACTOR SHALL BE RESPONSIBLE FOR ALL SUB-CONTRACTED WORK, REGARDLESS OF FUNDING SOURCE. THE SPECIAL PROVISIONS, SPECIFICATIONS, AND STANDARD SPECIFICATIONS SHALL GOVERN CONTRACTUAL REQUIREMENTS FOR SAID ARRANGEMENTS.
2. THE CONTRACTOR SHALL EXERCISE CARE IN PERFORMING REMOVALS SO AS NOT TO DISRUPT ADJOINING FEATURES THAT ARE TO REMAIN IN PLACE. ANY DAMAGES CAUSED TO ADJOINING FEATURES AS A RESULT OF THE CONTRACTOR'S NEGLIGENCE SHALL BE REPAIRED AT THE CONTRACTOR'S EXPENSE TO THE SATISFACTION OF THE ENGINEER.
3. IT SHALL BE THE CONTRACTORS RESPONSIBILITY TO VERIFY ALL EXISTING FIELD DIMENSIONS AND CONDITIONS PRIOR TO CONSTRUCTION AND ORDERING MATERIALS.
4. THE PRIME CONTRACTOR SHALL BE RESPONSIBLE FOR TRAFFIC CONTROL AND PROTECTION.
5. THE CONTRACTOR WILL BE RESPONSIBLE FOR ESTABLISHING POSITIVE DRAINAGE IN ALL DISTURBED AREAS TO THE SATISFACTION OF THE ENGINEER.
6. FACTORS USED FOR ESTIMATING PLAN QUANTITIES ARE AS FOLLOWS AND SHALL NOT BE USED FOR THE BASIS OF FINAL QUANTITIES:

HOT-MIX ASPHALT	112 LBS/SQ YD/IN
BITUMINOUS MATERIALS:	
TACK COAT	
MILLED/NON-MILLED HMA	0.05 LB/SQ FT
HMA LIFTS	0.025 LB/SQ FT

7. EXISTING SIGNS ONCE REMOVED BECOME PROPERTY OF UNION COUNTY HIGHWAY DEPARTMENT. COORDINATION FOR DELIVERY TO UNION COUNTY HIGHWAY DEPARTMENT YARD WILL BE HANDLED PRIOR TO REMOVAL. CARE SHALL BE TAKEN TO PRESERVE THE CONDITIONS OF THE SIGNS AND POSTS DURING THE REMOVAL EFFORTS.
8. FERTILIZERS SHALL BE APPLIED TO ALL DISTURBED AREAS AND INCORPORATED INTO THE SEEDBED PRIOR TO SEEDING AT THE RATE SPECIFIED IN SECTIONS 250 AND 252 OF THE STANDARD SPECIFICATIONS. THE COST OF THE FERTILIZER SHALL BE INCLUDED IN THE COST OF SEEDING CLASS 2A (SPECIAL).
9. MULCH METHOD II SHALL BE APPLIED OVER ALL SEEDED AREAS. THIS WORK SHALL BE INCLUDED IN THE COST OF SEEDING CLASS 2A (SPECIAL).
10. IT SHALL BE THE CONTRACTOR'S RESPONSIBILITY TO LOCATE AND PROTECT ALL UTILITIES. ANY DAMAGE TO UTILITIES SHALL BE THE CONTRACTOR'S RESPONSIBILITY. THE CONTRACTOR IS ADVISED THAT LIMITED UNDERGROUND INVESTIGATION OF UTILITIES HAS BEEN PERFORMED IN CONNECTION WITH THIS PROJECT. THE OWNER AND ENGINEER ASSUME NO RESPONSIBILITY FOR THE PRESENCE, SPECIFIC SIZE, LOCATION, OR CONDITION OF UNDERGROUND UTILITY AND DISTRIBUTION SYSTEMS.

UTILITY	CONTACT	PHONE
AMEREN ILLINOIS - (SOUTH)	NATHAN HILL	618-301-5305
CITY OF ANNA	BRIAN ZEIGLER	618-933-6411
CLEARWAVE COMMUNICATIONS	MARK RIGGS	843-384-9345
ENTERPRISE PROD.OPERATING, LLC	ECALL DEPT	877-243-2255
FRONTIER COMMUNICATIONS	KALIN HINSHAW	815-895-1515
LICK CREEK PUBLIC WATER DISTRICT	RICHARD HOWELL	618-201-5999
NEW WAVE/SPARKLIGHT	ROBERT EVRLEY	217-825-6512
SHAWNEE TELE./EQUALITY	SHANNON COSSEY	618-276-3325
SOUTHERN ILLINOIS ELECTRIC COOP	MICHAEL LOGEMAN	618-827-3555
TEXAS EASTERN TRANS.CORP	ZULFIQAR ALI	713-627-4962

11. IT IS ESTIMATED THAT APPROXIMATELY 10 MAILBOXES MAY REQUIRE RELOCATION DURING THIS PROJECT AS A RESULT OF THE MAILBOX FACE BEING LESS THAN 6 INCHES FROM THE EDGE OF THE PROPOSED SHOULDER OR POSSIBLY CONFLICTING WITH THE CONSTRUCTION OF THE PROPOSED SHOULDER.

MODEL: Default
FILE NAME: 113399 Union Co Lick Creek Road HSP/CAD Sheets/D99728-sh-gennotes.dgn



USER NAME = mobrien	DESIGNED - MAO	REVISED -
	DRAWN - NRS	REVISED -
PLOT SCALE = 100.0000 ' / in.	CHECKED - MAO	REVISED -
PLOT DATE = 4/5/2024	DATE - 11/21/2023	REVISED -

UNION COUNTY
HIGHWAY DEPARTMENT

INDEX OF SHEETS, HIGHWAY STANDARDS & GENERAL NOTES			
SCALE: NTS	SHEET 1	OF 1 SHEETS	STA. TO STA.

F.A. RTE.	SECTION	COUNTY	TOTAL SHEETS	SHEET NO.
*	22-00217-00-SP	UNION	13	2
HMG JOB NO. 8399		CONTRACT NO. 99728		
* FAS 924/FAU 9914 ILLINOIS		FED. AID PROJECT 5GZ7(580)		

MODEL: D:\dwg\ Union Co Lick Creek Rd IISIP\8399 300 Lick Creek Road IISIP\CAD Sheets\099728-shl-sd.dgn
FILE NAME: IIS399



IL PROF DESIGN FIRM 184.000899

USER NAME	= matvien
PLOT SCALE	= 40.0000 " / in.
PLOT DATE	= 4/23/2024

DESIGNED	= MAO
DRAWN	= NRS
CHECKED	= MAO
DATE	= 11/21/2023

REVISED	=
REVISED	=
REVISED	=
REVISED	=

UNION COUNTY
HIGHWAY DEPARTMENT

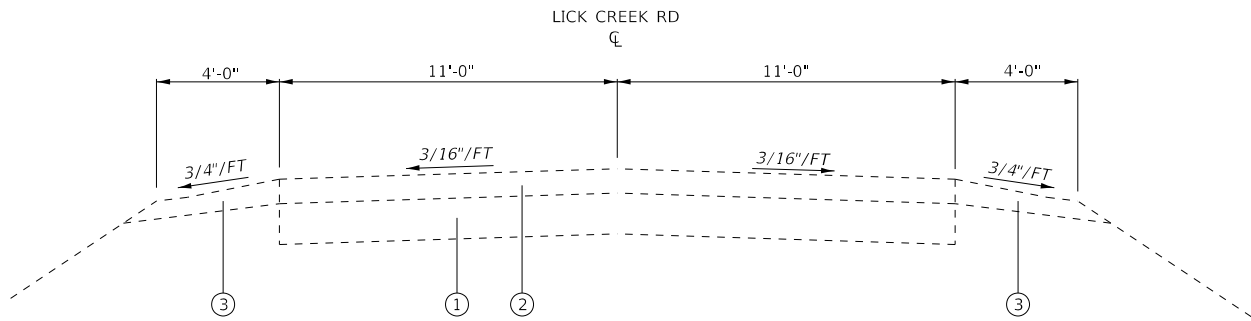
SUMMARY OF QUANTITIES

SCALE: NTS SHEET 1 OF 1 SHEETS STA. TO STA.

F.A. RTE.	SECTION	COUNTY	TOTAL SHEETS	SHEET NO.
*	22-00217-00-SP	UNION	13	3
HMG JOB NO. 8399		CONTRACT NO. 99728		
* FAS 924/FAU 9914 ILLINOIS FED. AID PROJECT 5GZ715801				

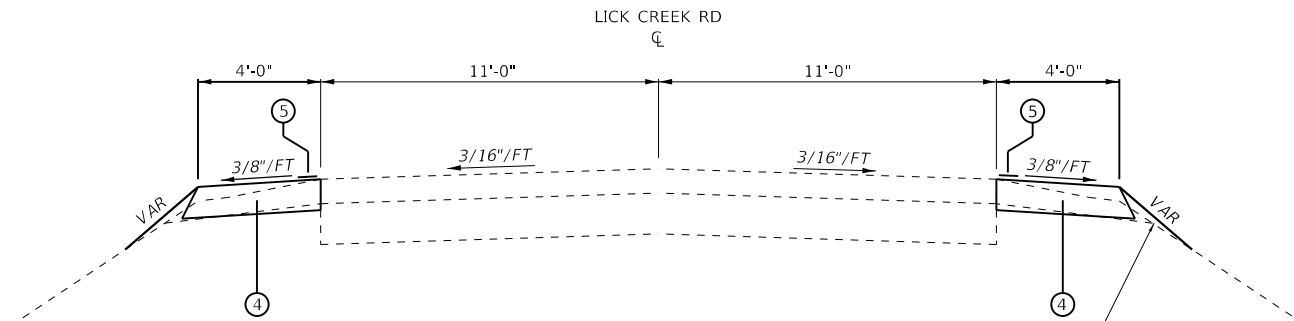
				CONSTR. CODE
CODE NO.	ITEM	UNIT	TOTAL QUANTITY	SAFETY
				0021
				RURAL
20200100	EARTH EXCAVATION	CU YD	6968	6968
48203021	HOT-MIX ASPHALT SHOULDERS, 6"	SQ YD	41807	41807
* 64200108	SHOULDER RUMBLE STRIPS, 8 INCH	FOOT	94064	94064
67100100	MOBILIZATION	L SUM	1	1
70100450	TRAFFIC CONTROL AND PROTECTION, STANDARD 701201	L SUM	1	1
* 72000100	SIGN PANEL - TYPE 1	SQ FT	120	120
* 72000200	SIGN PANEL - TYPE 2	SQ FT	391	391
72400100	REMOVE SIGN PANEL ASSEMBLY - TYPE A	EACH	39	39
* 72800100	TELESCOPING STEEL SIGN SUPPORT	FOOT	837	837
* 78100100	RAISED REFLECTIVE PAVEMENT MARKER	EACH	11	11
* 78100300	REPLACEMENT REFLECTOR	EACH	616	616
78300200	RAISED REFLECTIVE PAVEMENT MARKER REMOVAL	EACH	2	2
X0327301	RELOCATE EXSTING MAILBOX	EACH	10	10
X2501020	SEEDING, CLASS 2A (SPECIAL)	ACRE	0.25	0.25

* SPECIALTY ITEMS



EXISTING TYPICAL SECTION

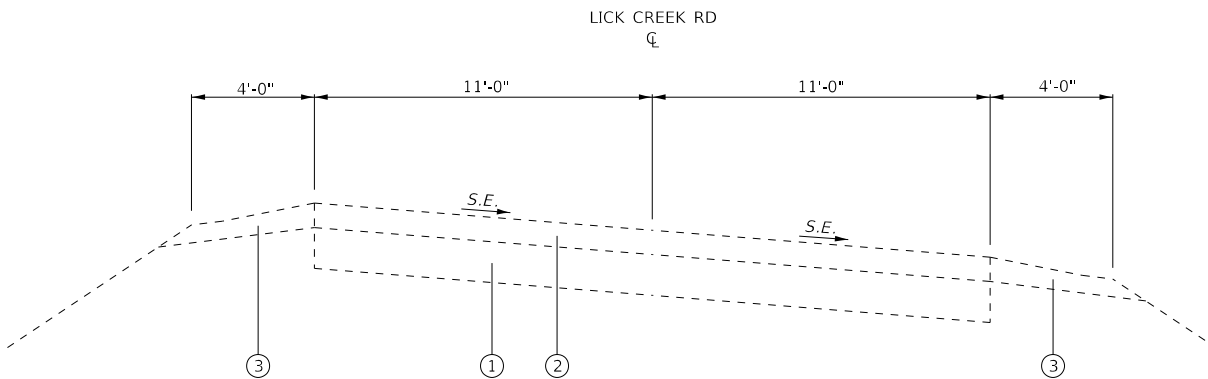
STA 8+61.24 TO STA 291+91.71
STA 303+45.84 TO STA 505+16.35
(OMIT STA 291+91.71 TO STA 303+45.84)



PROPOSED TYPICAL SECTION

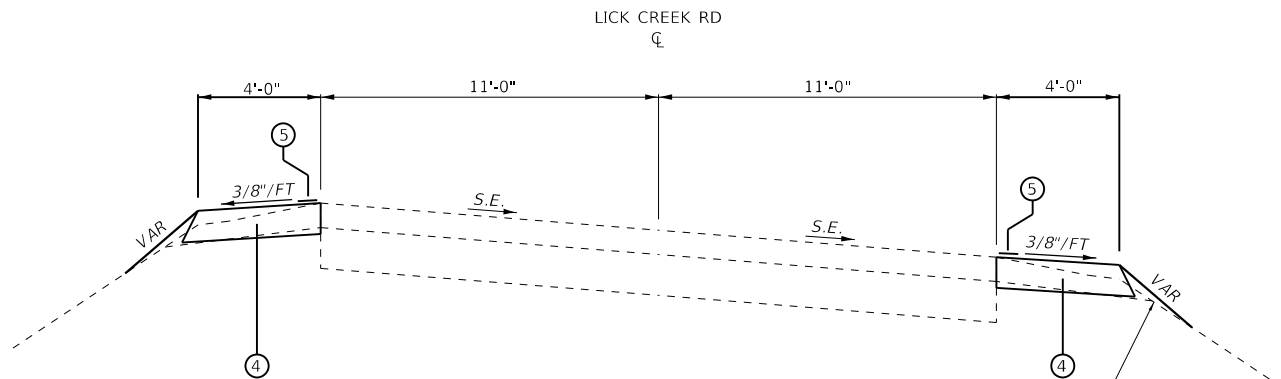
STA 12+30 TO STA 291+91.71
STA 303+45.84 TO STA 505+16.35
(OMIT STA 291+91.71 TO STA 303+45.84)

SHOULDER WEDGE TO BE CONSTRUCTED FROM SHOULDER EXCAVATION MATERIAL WHERE POSSIBLE. SEE SCHEDULE OF AREAS WHERE HAUL-OFF IS ANTICIPATED



EXISTING SUPERELEVATED TYPICAL SECTION

STA 8+61.24 TO STA 291+91.71
STA 303+45.84 TO STA 505+16.35
(OMIT STA 291+91.71 TO STA 303+45.84)



PROPOSED SUPERELEVATED TYPICAL SECTION

STA 12+30 TO STA 291+91.71
STA 303+45.84 TO STA 505+16.35
(OMIT STA 291+91.71 TO STA 303+45.84)

SHOULDER WEDGE TO BE CONSTRUCTED FROM SHOULDER EXCAVATION MATERIAL WHERE POSSIBLE. SEE SCHEDULE OF AREAS WHERE HAUL-OFF IS ANTICIPATED

LEGEND

- 1 EXISTING STONE BASE
- 2 EXISTING HMA PAVEMENT
- 3 EXISTING AGGREGATE WEDGE & EARTH SHOULDER
- 4 HOT-MIX ASPHALT SHOULDERS, 6 INCH (2 LIFTS)
- 5 SHOULDER RUMBLE STRIPS, 8 INCH

NOTES

GAPS WILL BE REQUIRED FOR RUMBLE STRIPS, 8 INCH AT SIDE ROADS, PRIVATE ENTRANCES, AND MAILBOX TURNOUTS AS DIRECTED BY THE ENGINEER.

HAUL-OFF OF SHOULDER EXCAVATION MATERIAL WILL BE REQUIRED AT LOCATIONS SHOWN HEREIN, AS WELL AS ANY AREAS DEEMED NECESSARY BY THE ENGINEER DURING CONSTRUCTION. SEE SCHEDULES FOR ANTICIPATED AREAS.

MODEL Default: FILE Name: 103399_Union Co Lick Creek Rd HSR/CAD Sheets/D99728-shd-typlc.dgn



IL PROF DESIGN FIRM 184,000899

USER NAME	= mobrien	DESIGNED -	MAO	REVISED -	
		DRAWN -	NRS	REVISED -	
PLOT SCALE	= 100,0000 ' / in.	CHECKED -	MAO	REVISED -	
PLOT DATE	= 4/5/2024	DATE	= 11/21/2023	REVISED -	

UNION COUNTY
HIGHWAY DEPARTMENT

TYPICAL SECTIONS

SCALE: NTS SHEET 1 OF 1 SHEETS STA. TO STA.

F.A. RTE.	SECTION	COUNTY	TOTAL SHEETS	SHEET NO.
*	22-00217-00-SP	UNION	13	4
HMG JOB NO. 8399		CONTRACT NO. 99728		
* FAS 924/FAU 9914		ILLINOIS FED. AID PROJECT		5GZ7(580)

EARTHWORK AND PAVING SCHEDULE

LOCATION	OFFSET	EARTH EXCAVATION	ESTIMATED WASTE VOLUME (HAUL -OFF)	HOT -MIX ASPHALT SHOULDERS 6"	SHOULDER RUMBLE STRIPS 8 INCH
		CU YD	CU YD	SQ YD	FOOT
LICK CREEK ROAD					
STA 12+30 TO STA 21+38	RT	67.3	60.6	403.6	908
STA 12+30 TO STA 44+17	LT	236.1	123.7	1,416.4	3,187
DENNY DRIVE (STA 21+67 RT)					
STA 21+96 TO STA 25+19	RT	23.9	24.0	143.6	323
DOGWALK ROAD (STA 25+44 RT)					
STA 25+69 TO STA 62+80	RT	274.9	102.2	1,649.3	3,711
OLD SARATOGA ROAD (STA 44+53 LT)					
STA 45+09 TO STA 59+75	LT	108.6	108.8	651.6	1,466
STA 60+25 TO STA 100+27	LT	296.5	192.1	1,778.7	4,002
LYNWOOD LANE (STA 63+05 RT)					
STA 63+30 TO STA 115+98	RT	390.2	95.2	2,341.3	5,268
NEW SARATOGA ROAD (STA 100+73 LT)					
STA 101+19 TO STA 183+89	LT	612.6	269.9	3,675.6	8,270
WALNUT VALLEY LANE (STA 116+32 RT)					
STA 116+66 TO STA 155+45	RT	287.3	78.2	1,724.0	3,879
MURPHY SCHOOL ROAD (STA 155+79 RT)					
STA 156+13 TO STA 233+26	RT	568.6	97.7	3,411.6	7,676
WOODS LANE (STA 184+12 LT)					
STA 184+35 TO STA 257+05	LT	521.6	52.9	3,129.8	7,042
CAMPGROUND ROAD (STA 233+52 RT)					
STA 233+80 TO STA 284+04	RT	352.8	-	2,116.9	4,763
SHARP ROAD (STA 257+39 LT)					
STA 257+73 TO STA 292+47	LT	252.2	39.4	1,513.2	3,405
CASEY LANE (STA 284+39 RT)					
STA 284+74 TO STA 292+48	RT	57.3	-	343.9	774
STA 292+47 TO STA 304+01 OMISSION FOR EXISTING SHOULDERS					
STA 304+01 TO STA 320+42	RT	121.5	47.6	729.2	1,641
STA 304+01 TO STA 320+32	LT	120.8	49.8	724.8	1,631
FRANCIS LANE & NEW SARATOGA ROAD (STA 320+73)					
STA 321+02 TO STA 346+70	RT	190.2	73.1	1,141.3	2,568
STA 321+12 TO STA 436+95	LT	846.0	242.1	5,076.0	11,421
CRAFT LANE (STA 347+06 RT)					
STA 347+40 TO STA 403+84	RT	406.1	26.7	2,436.4	5,482
NEW HOPE ROAD (STA 404+26 RT)					
STA 404+68 TO STA 435+65	RT	229.4	25.5	1,376.4	3,097
STA 436+15 TO STA 471+95	RT	265.2	80.8	1,591.1	3,580
GRANDVIEW ROAD (437+07 LT)					
STA 437+79 TO STA 475+18	LT	277.0	23.4	1,661.8	3,739
UNITED MISSIONARY LANE (STA 472+12 RT)					
STA 472+29 TO STA 505+16	RT	243.5	55.4	1,461.0	3,287
HALL CHURCH ROAD (STA 475+45 LT)					
STA 475+72 TO STA 505+16	LT	218.1	-	1,308.6	2,944
SUB-TOTAL		6,967.7	1,869.1	41,806.1	94,063.6
TOTAL		6,968	1,869	41,807	94,064

MODEL Default:
FILE Name: 10399_Union Co Lick Creek Rd HSR/CAD Streets/D99728-shc-schedules.dgn

RAISED REFLECTIVE PAVEMENT MARKER SCHEDULE

LOCATION	RAISED REFLECTIVE PAVEMENT MARKER	REPLACEMENT REFLECTOR	RAISED REFLECTIVE PAVEMENT MAKRER REMOVAL
	EACH	EACH	EACH
LICK CREEK ROAD			
STA 12+30 TO STA 343+51.59		414	
STA 276+60	1		1
* STA 343+51.59 TO STA 350+42.55	9	8	
STA 355+80	1		1
STA 350+42.55 TO STA 505+16.34		194	
TOTAL	11	616	2

* CURVE REQUIRES RRPMS AT 40' INTERVALS PER MUTCD,
EXISTING CURVE HAS RRPMS @ 80 FT INTERVALS

SIDE ROAD & ENTRANCE INFORMATION

APPROXIMATE STATION	OFFSET	DESCRIPTION	ESTIMATED WIDTH, FT
13+55	RT	COMMERCIAL ENTRANCE RIGHT	50
20+35	RT	COMMERCIAL ENTRANCE RIGHT	40
21+67	RT	DENNY DRIVE	58
25+44	RT	DOGWALK ROAD	50
44+63	LT	OLD SARATOGA ROAD	92
46+20	RT	COMMERCIAL ENTRANCE RIGHT	196
52+10	LT	PRIVATE ENTRANCE LEFT	40
53+20	LT	PRIVATE ENTRANCE LEFT	40
63+05	RT	LYNWOOD LANE	50
100+73	LT	NEW SARATOGA ROAD	92
116+32	RT	WALNUT VALLEY LANE	68
130+40	LT	PRIVATE ENTRANCE LEFT	60
155+79	RT	MURPHY SCHOOL ROAD	68
165+90	LT	PRIVATE ENTRANCE LEFT	60
184+12	LT	WOODS LANE	46
233+53	RT	CAMPGROUND ROAD	54
257+39	LT	SHARP ROAD	68
284+39	RT	CASEY LANE	70
320+72	LT	NEW SARATOGA ROAD	80
320+72	RT	FRANCIS LANE	60
328+20	RT	PRIVATE ENTRANCE RIGHT	30
347+05	RT	CRAFT LANE	70
395+25	LT	COMMERCIAL ENTRANCE LEFT	65
397+20	LT	COMMERCIAL ENTRANCE LEFT	75
398+70	LT	COMMERCIAL ENTRANCE LEFT	60
404+26	RT	NEW HOPE ROAD	84
437+37	LT	GRANDVIEW ROAD	84
472+12	RT	UNITED MISSIONARY LANE	34
475+45	LT	HALL CHURCH ROAD	54
475+45	RT	COMMERCIAL ENTRANCE RIGHT	70

NOTES:
LOCATIONS LISTED IN THE SCHEDULE ABOVE ARE AREAS ANTICIPATED NOT TO
RECEIVE SHOULDERS, WITH THE FINAL DETERMINATION BEING MADE BY THE
ENGINEER.

MODEL Default
FILE Name: 103999_Union Co Lick Creek Rd HSR/CAD Streets/D99728-shr-schedules.dgn



IL PROF DESIGN FIRM 184,000899

USER NAME = mobrien	DESIGNED - MAO	REVISED -
	DRAWN - NRS	REVISED -
PLOT SCALE = 100,0000 ' / in.	CHECKED - MAO	REVISED -
PLOT DATE = 4/5/2024	DATE - 11/21/2023	REVISED -

UNION COUNTY
HIGHWAY DEPARTMENT

QUANTITIY SCHEDULES

SCALE: NTS SHEET 2 OF 4 SHEETS STA. TO STA.

F.A. RTE.	SECTION	COUNTY	TOTAL SHEETS	SHEET NO.
*	22-00217-00-SP	UNION	13	6
CONTRACT NO. 99728				
* FAS 924/FAU 9914 ILLINOIS FED. AID PROJECT 5GZ7(580)				

MODEL Default
FILE Name: 18399_Union Co Lick Creek Rd HSR/CAD Sheets/D99728-shc-schedules.dgn



IL PROF DESIGN FIRM 184,000899

USER NAME	= mobrien
PLOT SCALE	= 100,0000 ' / in.
PLOT DATE	= 4/5/2024

DESIGNED -	MAO
DRAWN -	NRS
CHECKED -	MAO
DATE -	11/21/2023

REVISED -	
REVISED -	
REVISED -	
REVISED -	

UNION COUNTY
HIGHWAY DEPARTMENT

QUANTITIY SCHEDULES

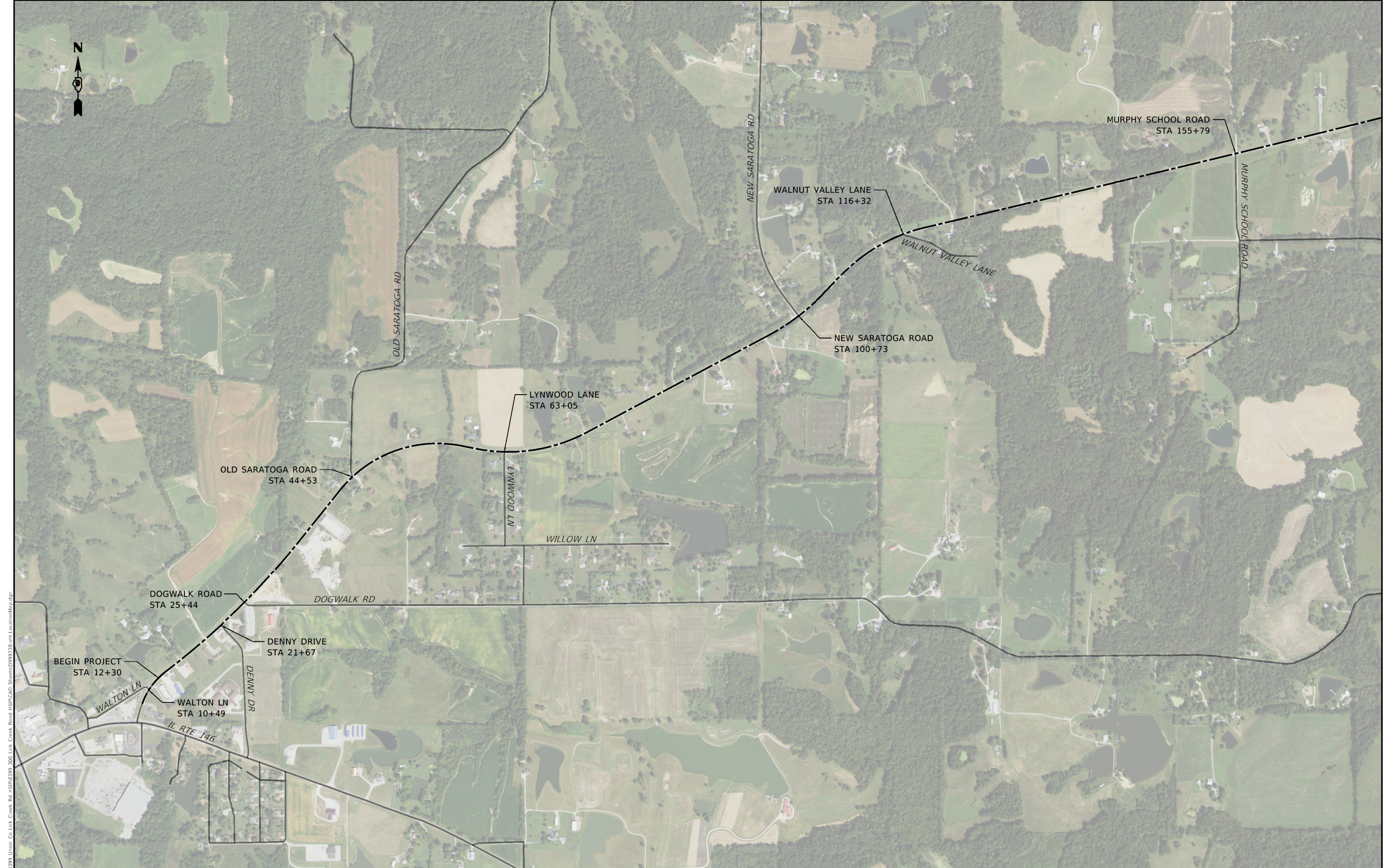
SCALE: NTS	SHEET 3	OF 4	SHEETS	STA.	TO STA.
------------	---------	------	--------	------	---------

F.A. RTE.	SECTION	COUNTY	TOTAL SHEETS	SHEET NO.
*	22-00217-00-SP	UNION	13	7
HMG JOB NO. 8399		CONTRACT NO. 99728		
* FAS 924/FAU 9914	ILLINOIS	FED. AID PROJECT	5GZ7(580)	

SIGN SCHEDULE (CONTINUED)

STATION	OFFSET	MUTCD TYPE	DESCRIPTION	SIGN PANEL TYPE 1	SIGN PANEL TYPE 2	REMOVE SIGN PANEL ASSEMBLY TYPE A	TELESCOPING STEEL SIGN SUPPORT
				SQ FT	SQ FT	EACH	FOOT
344+79	RT	W1-8	CHEVRON (FACING NORTHEAST)	3.0			
345+99	RT	W1-8	CHEVRON (FACING SOUTHWEST)	3.0			16.0
345+99	RT	W1-8	CHEVRON (FACING NORTHEAST)	3.0			
347+19	RT	W1-8	CHEVRON (FACING SOUTHWEST)	3.0			16.0
347+19	RT	W1-8	CHEVRON (FACING NORTHEAST)	3.0			
348+39	RT	W1-8	CHEVRON (FACING SOUTHWEST)	3.0			16.0
348+39	RT	W1-8	CHEVRON (FACING NORTHEAST)	3.0			
349+59	RT	W1-8	CHEVRON (FACING SOUTHWEST)	3.0			16.0
349+59	RT	W1-8	CHEVRON (FACING NORTHEAST)	3.0			
350+79	RT	W1-8	CHEVRON (FACING SOUTHWEST)	3.0			16.0
350+79	RT	W1-8	CHEVRON (FACING NORTHEAST)	3.0			
351+83	RT	W1-8	CHEVRON (FACING NORTHEAST)	3.0			16.0
353+08	LT	W1-1	HORIZONTAL ALIGNMENT	9.0			16.0
353+08	LT	W13-1(40)	ADVISORY SPEED	2.3			
356+75	RT	W14-3	NO PASSING ZONE		11.5	1.0	17.0
372+00	LT	W14-3	NO PASSING ZONE		11.5	1.0	17.0
385+00	LT	W14-3	NO PASSING ZONE		11.5	1.0	17.0
387+00	RT	W14-3	NO PASSING ZONE		11.5	1.0	17.0
400+00	LT	W7-1b(9)	HILL	9.0		1.0	17.0
402+00	RT	W14-3	NO PASSING ZONE		11.5	1.0	17.0
428+50	LT	W14-3	NO PASSING ZONE		11.5	1.0	17.0
443+50	RT	W14-3	NO PASSING ZONE		11.5	1.0	17.0
456+75	LT	W14-3	NO PASSING ZONE		11.5	1.0	17.0
472+75	LT	W14-3	NO PASSING ZONE		11.5	1.0	17.0
473+00	RT	W14-3	NO PASSING ZONE		11.5	1.0	17.0
488+00	LT	W14-3	NO PASSING ZONE		11.5	1.0	17.0
490+75	RT	W14-3	NO PASSING ZONE		11.5	1.0	17.0
530+50	RT	W14-3	NO PASSING ZONE		11.5	1.0	17.0
SUB-TOTAL				120.2	391.0	39.0	837.0
TOTAL				120	391	39	837

MODEL Default
FILE Name: 18399_Union_Co_Ltd_Creek_Rd_HSR/CAD_Sheets/D99728-shc-schedules.dgn



MODEL Default
FILE Name: 18399 Union Co Lick Creek Rd HSPICAD SheetsD99728.dgn LocationMap.dgn

HMG
ENGINEERS

IL PROF DESIGN FIRM 184.000899

USER NAME = mobrien
PLOT SCALE = 1000.0000' / in.
PLOT DATE = 4/5/2024

DESIGNED - MAO
DRAWN - NRS
CHECKED - MAO
DATE - 11/21/2023

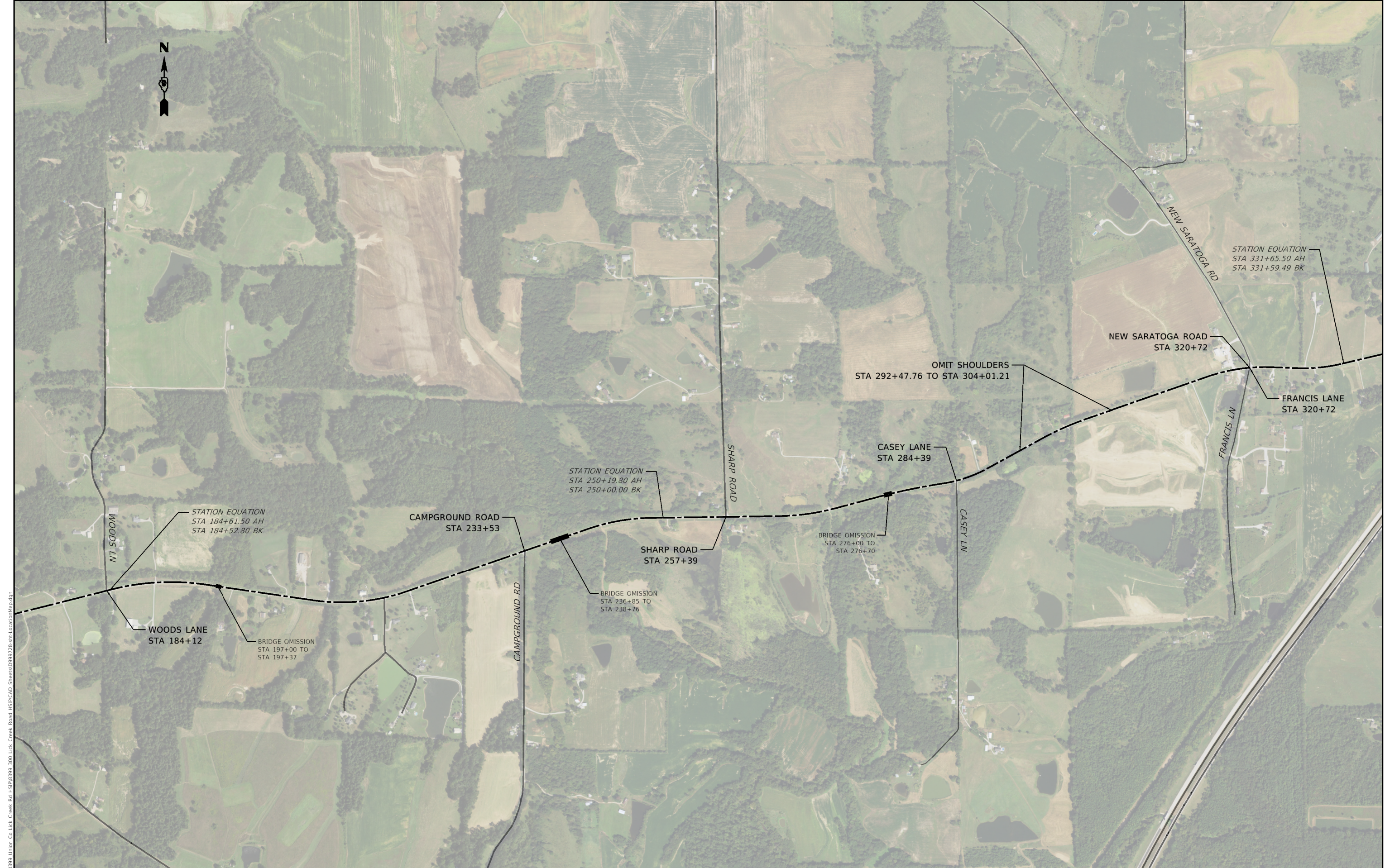
REVISED -
REVISED -
REVISED -
REVISED -

**UNION COUNTY
HIGHWAY DEPARTMENT**

LOCATION MAP

SCALE: 1" = 500' SHEET 1 OF 3 SHEETS STA. TO STA.

F.A. RTE.	SECTION	COUNTY	TOTAL SHEETS	SHEET NO.
7	22-00217-00-5P	UNION	13	9
CONTRACT NO. 99728				
* FAS 924/FAU 9914 ILLINOIS FED. AID PROJECT				



MODEL: Default
FILE NAME: 110399 Union Co Lick Creek Rd HSR/CAD Sheets/D99728.dgn LocationMap.dgn



USER NAME	= mobrien	DESIGNED -	MAO	REVISED -	
		DRAWN -	NRS	REVISED -	
PLOT SCALE	= 1000.0000' / in.	CHECKED -	MAO	REVISED -	
PLOT DATE	= 4/5/2024	DATE -	11/21/2023	REVISED -	

UNION COUNTY
HIGHWAY DEPARTMENT

LOCATION MAP

SCALE: 1" = 500' SHEET 2 OF 3 SHEETS STA. TO STA.

F.A. RTE.	SECTION	COUNTY	TOTAL SHEETS	SHEET NO.
22	00217-00-SP	UNION	13	10
CONTRACT NO. 99728				
* FAS 924/FAU 9914 ILLINOIS FED. AID PROJECT				



MODEL: Default
FILE NAME: I:\399 Union Co Lick Creek Rd HSPICAD Sheets\099728.dgn LocationMap.dgn

HMG
ENGINEERS
IL PROF DESIGN FIRM 184.000899

USER NAME	= mobrien	DESIGNED -	MAO	REVISED -	
		DRAWN -	NRS	REVISED -	
PLOT SCALE	= 1000.0000' / in.	CHECKED -	MAO	REVISED -	
PLOT DATE	= 4/5/2024	DATE	= 11/21/2023	REVISED -	

UNION COUNTY
HIGHWAY DEPARTMENT

LOCATION MAP

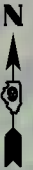
SCALE: 1" = 500' SHEET 3 OF 3 SHEETS STA. TO STA.

F.A. RTE.	SECTION	COUNTY	TOTAL SHEETS	SHEET NO.
*	22-00217-00-SP	UNION	13	11
CONTRACT NO. 99728				
* FAS 924/FAU 9914 ILLINOIS FED. AID PROJECT				

NOTES

FOR VERTICAL PLACEMENT OF SIGN POSTS AND PANELS REFER TO HIGHWAY STANDARD 720006.

CHEVRON SIGNS SHALL BE INSTALLED ON THE OUTSIDE OF A CURVE, IN LINE WITH AND APPROXIMATELY AT A RIGHT ANGLE TO APPROACHING TRAFFIC. THE SIGNS SHALL HAVE A 120 FOOT SPACING BETWEEN THEM FOR A 40 MPH ADVISORY SPEED LIMIT.



MODEL Default
FILE Name: 184.00899 Union Co Lick Creek Rd HSPCAD SheetsD99728.dgn Details CurveSigning.dgn



USER NAME	= mobrien	DESIGNED -	MAO	REVISED -	
DRAWN -	NRS	REVISED -			
PLOT SCALE	= 100.0000' / in.	CHECKED -	MAO	REVISED -	
PLOT DATE	= 4/5/2024	DATE -	12/5/2023	REVISED -	

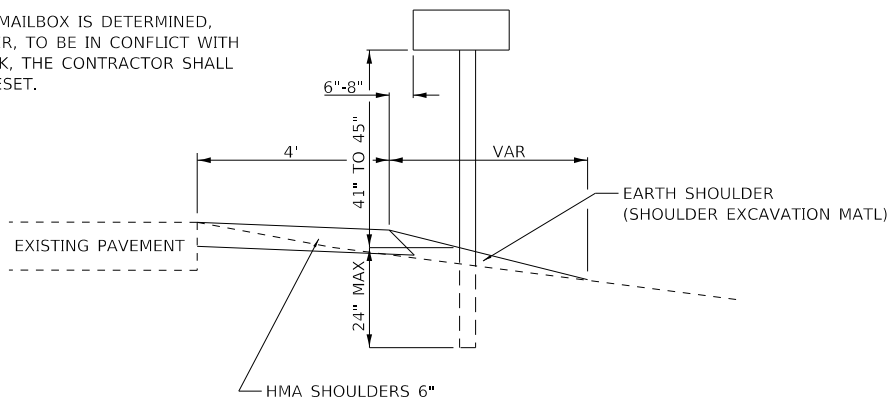
STATE OF ILLINOIS
DEPARTMENT OF TRANSPORTATION

DETAILS
CHEVRON PLACEMENT

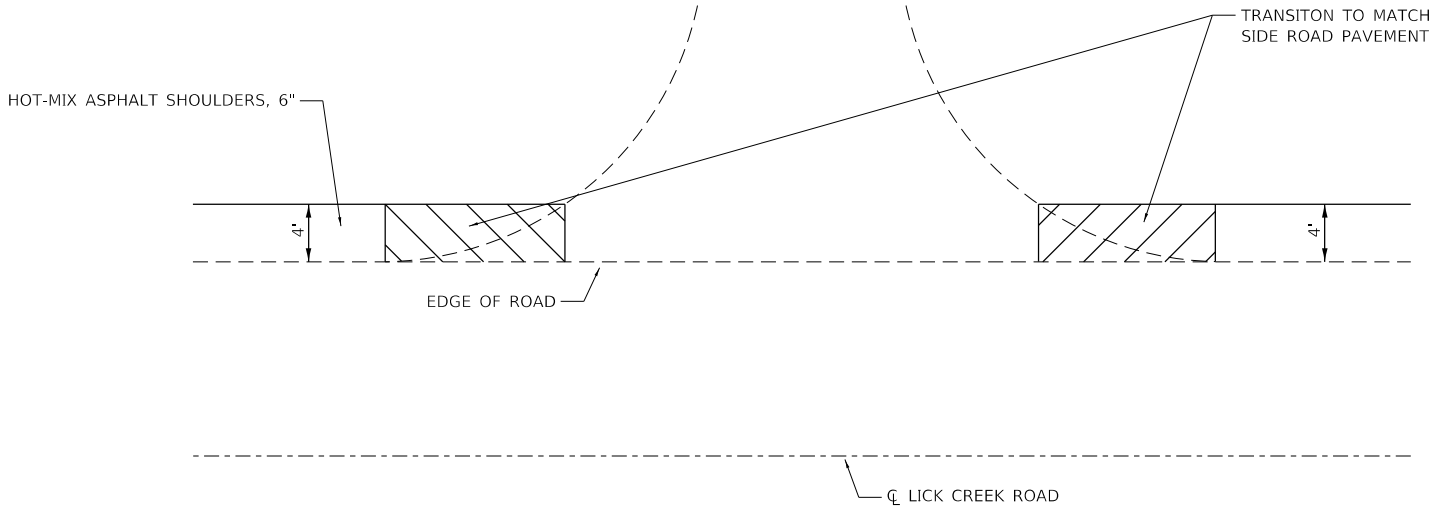
SCALE: 1" = 50' SHEET 1 OF 1 SHEETS STA. TO STA.

F.A.S RTE.	SECTION	COUNTY	TOTAL SHEETS	SHEET NO.
*	22-00217-005P	UNION	13	12
CONTRACT NO. 99728				
* FAS 924/FAU 9914 ILLINOIS FED. AID PROJECT 5GZ7(580)				

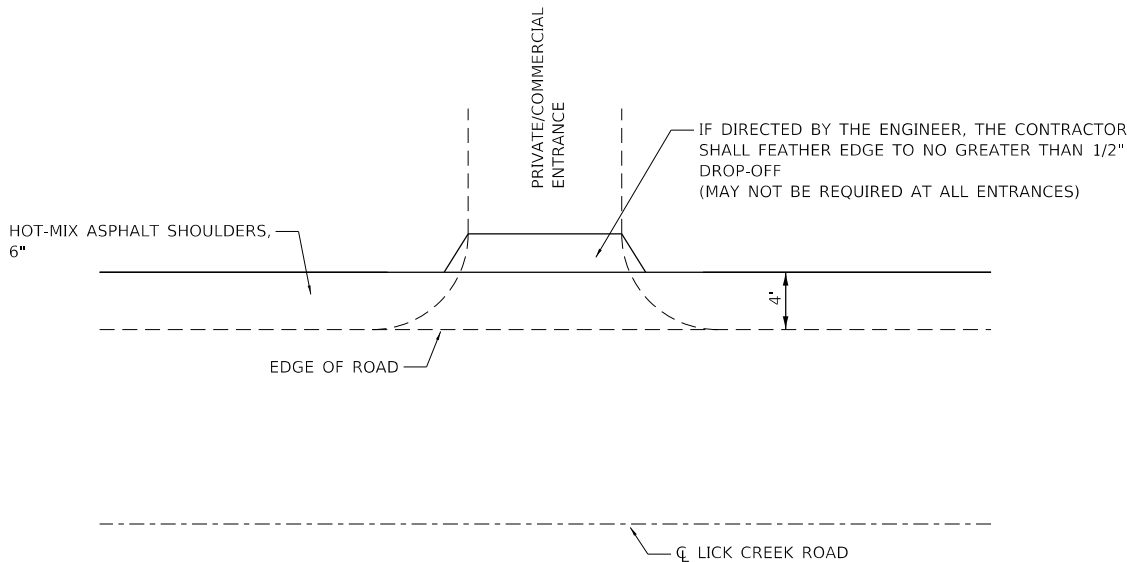
IF AN EXISTING MAILBOX IS DETERMINED, BY THE ENGINEER, TO BE IN CONFLICT WITH SHOULDER WORK, THE CONTRACTOR SHALL REMOVE AND RESET.



**TYPICAL MAILBOX
PLACEMENT**



SIDEROAD DETAIL



**PRIVATE/COMMERCIAL
AGGREGATE & EARTH
ENTRANCE DETAIL**

MODEL Default
FILE Name: 18399_Union Co Lick Creek Rd HSR/CAD_Sheets/D99728-shr-Details-SideRoadEntrances.dgn

HMG
ENGINEERS

IL PROF DESIGN FIRM 184,000899

USER NAME = mobrien
PLOT SCALE = 20,0000' / in.
PLOT DATE = 4/5/2024

DESIGNED - MAO
DRAWN - NRS
CHECKED - MAO
DATE - 12/5/2023

REVISED -
REVISED -
REVISED -
REVISED -

**STATE OF ILLINOIS
DEPARTMENT OF TRANSPORTATION**

**DETAILS
SIDE ROAD AND ENTRANCE**

SCALE: NTS SHEET 1 OF 1 SHEETS STA. TO STA.

F.A. RTE.	SECTION	COUNTY	TOTAL SHEETS	SHEET NO.
*	22-00217-00SP	UNION	13	13
HMG JOB NO. 8399		CONTRACT NO. 99728		
* FAS 924/FAU 9914 ILLINOIS FED. AID PROJECT 5GZ7(580)				