

STATE OF ILLINOIS
DEPARTMENT OF TRANSPORTATION

F.A.P. RTE.	SECTION	COUNTY	TOTAL SHEETS	SHEET NO.
686	114BJR-1	JACKSON	14	1
ILLINOIS CONTRACT NO. 78A55				

FOR INDEX OF SHEETS, SEE SHEET NO. 3

FOR SUMMARY OF QUANTITIES, SEE SHEET NO. 4-5

TRAFFIC DATA

SN 039-0074
2023 ADT = 1150
20% Trucks

TOWNSHIPS

VERGENNES

PROPOSED
HIGHWAY PLANS

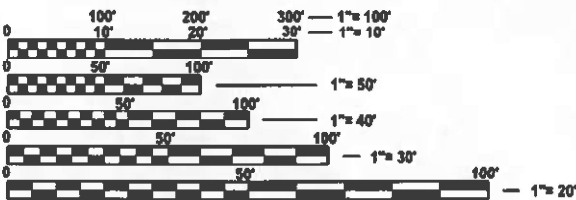
FAP ROUTE 686 (IL 4)
SECTION 114BJR-1
CONTRACT MAINTENANCE
JOINT REPLACEMENT
JACKSON COUNTY

C-99-079-24

DESIGN DESIGNATION : N/A

COORDINATE SYSTEM : N/A

POSTED SPEED : 55 MPH

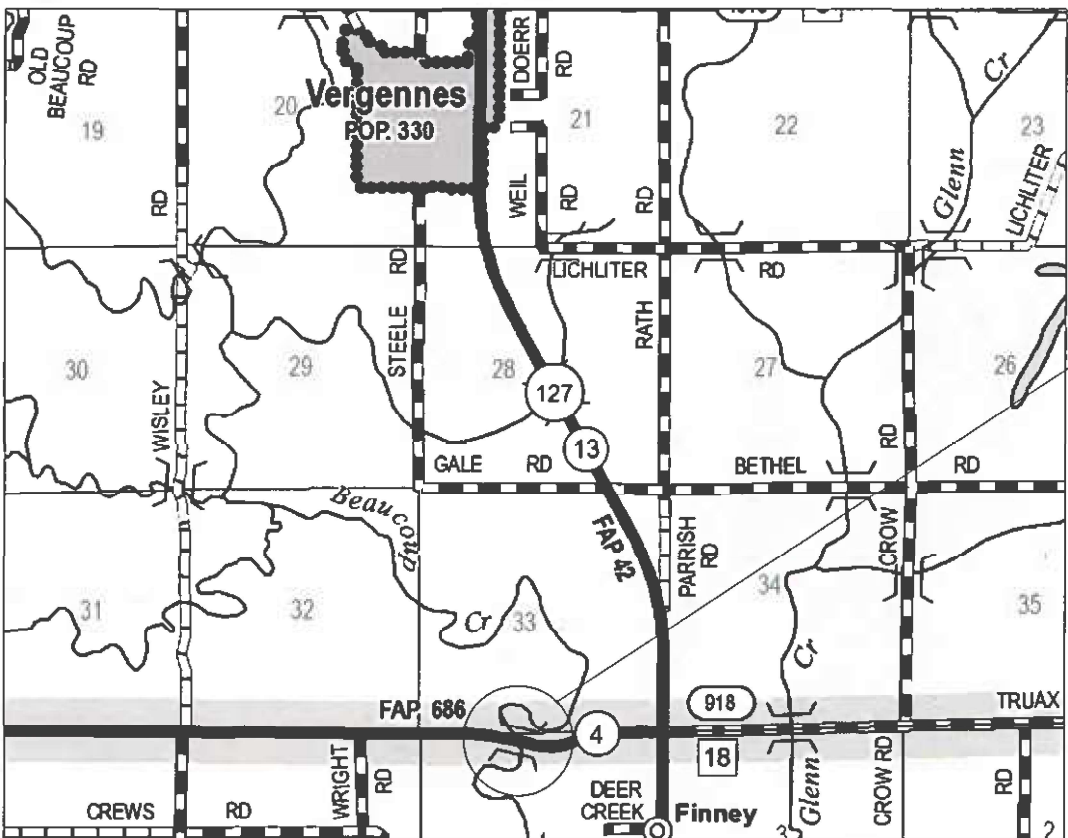


FULL SIZE PLANS HAVE BEEN PREPARED USING STANDARD
ENGINEERING SCALES. REDUCED SIZED PLANS WILL NOT
CONFORM TO STANDARD SCALES. IN MAKING MEASUREMENTS
ON REDUCED PLANS, THE ABOVE SCALES MAY BE USED.

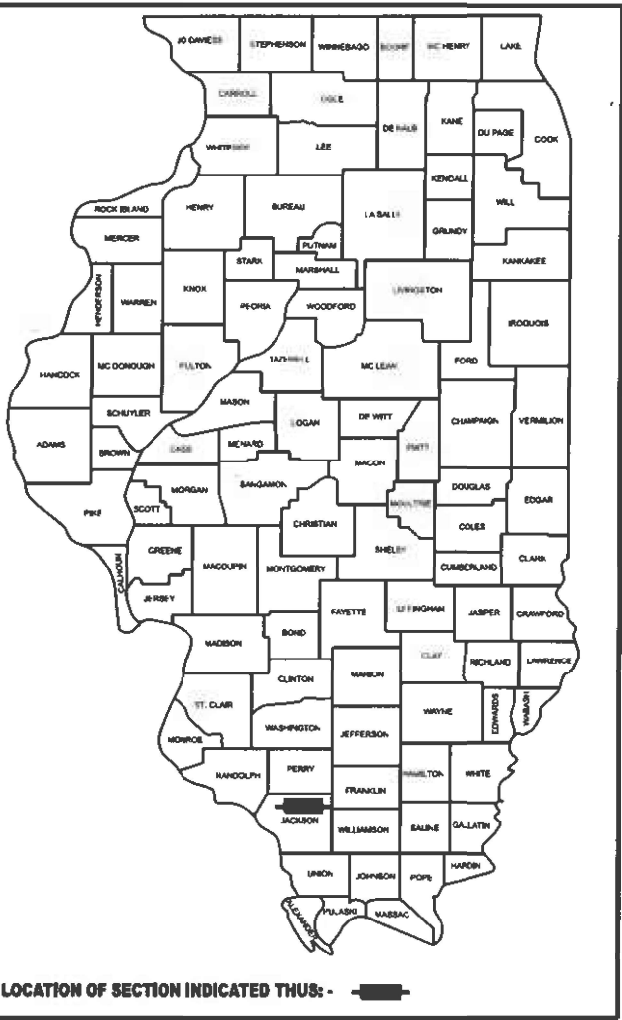
J.U.L.I.E.
JOINT UTILITY LOCATION INFORMATION FOR EXCAVATION
1-800-892-0123
OR 811

PROJECT ENGINEER: DAVID WILLSON & DEREK SNIDER
PROJECT MANAGER: EHREN KIRBY

CONTRACT NO. 78A55



GROSS LENGTH = 1857.6 FT. = 0.3518 MILE
NET LENGTH = 1857.6 FT. = 0.3518 MILE



LOCATION OF SECTION INDICATED THUS: -

SN 039-0074
IL 4 OVER BEAUCOUP CREEK
JACKSON COUNTY

STATE OF ILLINOIS
DEPARTMENT OF TRANSPORTATION

SUBMITTED March 22, 2024
Kirk H. Brown REGIONAL ENGINEER

May 10, 2024 Scott A. Etk
ENGINEER OF DESIGN AND ENVIRONMENT

May 10, 2024 Stephen M. Lewis
DIRECTOR OF HIGHWAYS PROJECT IMPLEMENTATION

PRINTED BY THE AUTHORITY
OF THE STATE OF ILLINOIS

MODE: Signature Sheet (Sheet)
FILE NAME: g:\w\114BJR\114BJR-1\060D978A55-SHA-Cover.dgn

USER NAME	= derek.snider	DESIGNED	-	REVISED	-
		DRAWN	-	REVISED	-
PLOT SCALE	= 0.16666633 1/in.	CHECKED	-	REVISED	-
PLOT DATE	= 3/15/2024	DATE	-	REVISED	-

STATE OF ILLINOIS
DEPARTMENT OF TRANSPORTATION

Prepared By: Susan Rice
DISTRICT STUDIES & PLANS ENGINEER

Examined By: Nancy Hee
DISTRICT LAND ACQUISITION ENGINEER

Examined By: Car Nula
DISTRICT PROGRAM DEVELOPMENT ENGINEER

Examined By: [Signature]
DISTRICT OPERATIONS ENGINEER

Examined By: Dan [Signature]
DISTRICT PROJECT IMPLEMENTATION ENGINEER

Examined By: Dan [Signature]
DISTRICT CONSTRUCTION ENGINEER

Examined By: Aan Dang
DISTRICT MATERIALS ENGINEER

SIGNATURE SHEET

SCALE: SHEET OF 14 SHEETS STA. TO STA.

F.A.P. RTE.	SECTION	COUNTY	TOTAL SHEETS	SHEET NO.
686	114BJR-1	JACKSON	14	2
CONTRACT NO. 78A55				
ILLINOIS FED. AID PROJECT				

GENERAL NOTES

THE ALGEBRAIC DIFFERENCE BETWEEN THE PAVEMENT AND SHOULDER SLOPES SHALL NOT EXCEED 10%. THE SHOULDER ON THE OUTSIDE OF SUPERELEVATED CURVES SHALL BE FLATTENED ACCORDINGLY.

ON ALL SUPERELEVATED CURVES, THE PROPOSED BASE COURSE WIDENING SHALL BE CONSTRUCTED WITH A SLOPE CONFORMING TO THE RATE OF SUPERELEVATION OF THE EXISTING PAVEMENT.

COMMITMENTS: NONE

INDEX OF SHEETS

1	COVER SHEET
2	SIGNATURE SHEET
3	GENERAL NOTES, INDEX OF SHEETS AND STANDARDS
4-5	SUMMARY OF QUANTITIES
6	GENERAL PLAN AND ELEVATION SN 039-0074
7	TYPICALS AND STAGING SN 039-0074
8	STAGE I DETAILS
9	STAGE II DETAILS
10	JOINT RECONSTRUCTION DETAILS AT ABUTMENTS SN 039-0074
11	PREFORMED JOINT STRIP SEAL DETAILS
12	BAR SPLICER AND MECHANICAL SPLICER DETAILS
13	TEMPORARY CONCRETE BARRIER DETAILS
14	CAUTION ONE LANE ROAD SIGN DETAILS

STANDARDS

000001-08	STANDARD SYMBOLS, ABBREVIATIONS AND PATTERNS
001001-02	AREAS OF REINFORCEMENT BARS
001006	DECIMAL OF AN INCH AND OF A FOOT
420001-10	PAVEMENT JOINTS
701001-02	OFF-ROAD OPERATIONS, 2L, 2W, MORE THAN 15' AWAY
701006-05	OFF-ROAD OPERATIONS, 2L, 2W, 15' TO 24" FROM PAVEMENT EDGE
701201-05	LANE CLOSURE, 2L, 2W, DAY ONLY, FOR SPEEDS ≥ 45 MPH
701321-18	LANE CLOSURE, 2L, 2W, BRIDGE REPAIR WITH BARRIER
701326-04	LANE CLOSURE, 2L, 2W, PAVEMENT WIDENING, FOR SPEED ≥ 45 MPH
701901-09	TRAFFIC CONTROL DEVICES
704001-08	TEMPORARY CONCRETE BARRIER
780001-05	TYPICAL PAVEMENT MARKINGS
782006-01	GUARDRAIL AND BARRIER WALL REFLECTOR MOUNTING DETAILS
862001-01	UNINTERRUPTABLE POWER SUPPLY (UPS)

REV. - MS

MODEL: GENERAL NOTES INDEX STANDARDS [Sheet]
FILE NAME: c:\pw\work\wilson\std\0963196\039-0074-55-StdB-Index_GenNotes.dgn

	USER NAME = david.a.wilson	DESIGNED -	REVISED -	STATE OF ILLINOIS DEPARTMENT OF TRANSPORTATION	GENERAL NOTES, INDEX OF SHEETS AND STANDARDS			F.A.P RTE.	SECTION	COUNTY	TOTAL SHEETS	SHEET NO.
		DRAWN -	REVISED -					686	114BJR-1	JACKSON	14	3
	PLOT SCALE = 0.16666633' / in.	CHECKED -	REVISED -					CONTRACT NO. 78A55				
	PLOT DATE = 3/15/2024	DATE -	REVISED -		SCALE:	SHEET	OF 14 SHEETS	STA.	TO STA.	ILLINOIS FED. AID PROJECT		

SUMMARY OF QUANTITIES

COUNTY:	JACKSON CO.
ROUTE:	FAP 686 (IL 4)
FUNDING:	100% STATE
LOCATION:	RURAL
	SN 039-0074
	0047

CODE NUMBER	ITEM DESCRIPTION	UNIT	
35400500	PORTLAND CEMENT CONCRETE BASE COURSE WIDENING 10"	SQ YD	147
44004250	PAVED SHOULDER REMOVAL	SQ YD	147
50102400	CONCRETE REMOVAL	CU YD	23.9
50300255	CONCRETE SUPERSTRUCTURE	CU YD	23.9
50300300	PROTECTIVE COAT	SQ YD	36
50800205	REINFORCEMENT BARS, EPOXY COATED	POUND	2,700
50800515	BAR SPLICERS	EACH	28
52000110	PREFORMED JOINT STRIP SEAL	FOOT	88
67000400	ENGINEER'S FIELD OFFICE, TYPE A	CAL MO	2
67100100	MOBILIZATION	L SUM	1
70100405	TRAFFIC CONTROL AND PROTECTION, STANDARD 701321	EACH	1
70100450	TRAFFIC CONTROL AND PROTECTION, STANDARD 701201	L SUM	1
70100500	TRAFFIC CONTROL AND PROTECTION, STANDARD 701326	L SUM	1
70103815	TRAFFIC CONTROL SURVEILLANCE	CAL DA	2

REV. - MS

MODEL: S001 [Sheet]
FILE NAME: c:\pw\work\pilot\wilson\d0963196\0978A55-SHNC-S00.dgn

	USER NAME = david.a.wilson	DESIGNED -	REVISED -	STATE OF ILLINOIS DEPARTMENT OF TRANSPORTATION	SUMMARY OF QUANTITIES			FAP RTE.	SECTION	COUNTY	TOTAL SHEETS	SHEET NO.
	PLOT SCALE = 0.16666633 1/in.	DRAWN -	REVISED -					686	114BJR-1	JACKSON	14	4
	PLOT DATE = 3/19/2024	CHECKED -	REVISED -		CONTRACT NO. 78A55							
		DATE -	REVISED -		SCALE:	SHEET	OF 14 SHEETS	STA.	TO STA.	ILLINOIS FED. AID PROJECT		

SUMMARY OF QUANTITIES - CONT

COUNTY:	JACKSON CO.
ROUTE:	FAP 686 (IL 4)
FUNDING:	100% STATE
LOCATION:	RURAL
	SN 039-0074
	0047

CODE NUMBER	ITEM DESCRIPTION	UNIT	
70106500	TEMPORARY BRIDGE TRAFFIC SIGNALS	EACH	1
70106700	TEMPORARY RUMBLE STRIPS	EACH	6
70107025	CHANGEABLE MESSAGE SIGN	CAL DA	28
70300100	SHORT TERM PAVEMENT MARKING	FOOT	100
70300150	SHORT TERM PAVEMENT MARKING REMOVAL	SQ FT	34
70300221	TEMPORARY PAVEMENT MARKING - LINE 4"- PAINT	FOOT	4,004
70400100	TEMPORARY CONCRETE BARRIER	FOOT	225
70400200	RELOCATE TEMPORARY CONCRETE BARRIER	FOOT	225
70600260	IMPACT ATTENUATORS, TEMPORARY (FULLY REDIRECTIVE, NARROW), TEST LEVEL 3	EACH	4
70600332	IMPACT ATTENUATORS, RELOCATE (FULLY REDIRECTIVE, NARROW), TEST LEVEL 3	EACH	4
* 78001110	PAINT PAVEMENT MARKING - LINE 4"	FOOT	4,004
78300201	PAVEMENT MARKING REMOVAL - GRINDING	SQ FT	2,670
* 86200300	UNINTERRUPTABLE POWER SUPPLY, EXTENDED	EACH	1

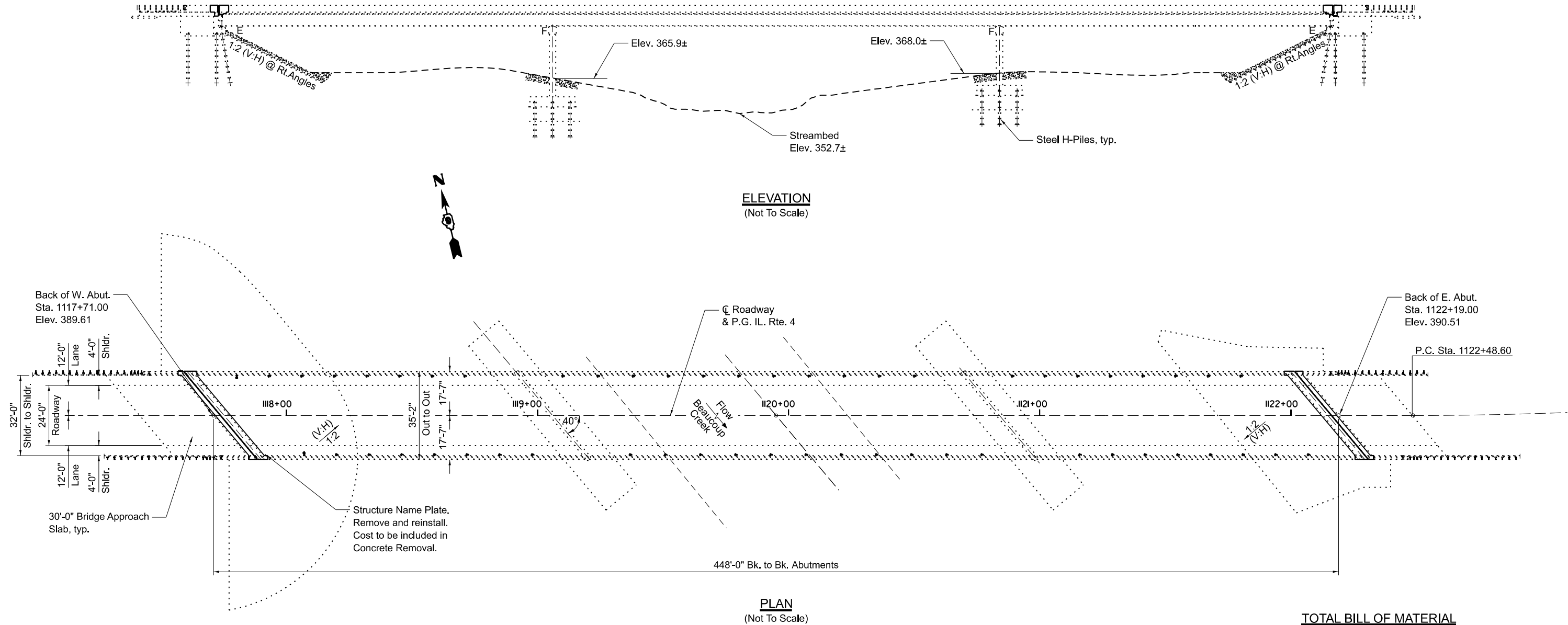
* SPECIALTY ITEM

REV. - MS

MODEL: S002 [Sheet]
FILE NAME: c:\pw\work\pwtwilson\d0963196\0978A55-SHC-S00.dgn

	USER NAME = david.a.wilson	DESIGNED -	REVISED -	STATE OF ILLINOIS DEPARTMENT OF TRANSPORTATION	SUMMARY OF QUANTITIES			FAP RTE.	SECTION	COUNTY	TOTAL SHEETS	SHEET NO.
		DRAWN -	REVISED -					686	114BJR-1	JACKSON	14	5
	PLOT SCALE = 0.16666633 1/in.	CHECKED -	REVISED -					CONTRACT NO. 78A55				
	PLOT DATE = 3/19/2024	DATE -	REVISED -		SCALE:	SHEET	OF 14 SHEETS	STA.	TO STA.	ILLINOIS FED. AID PROJECT		

MODEL: General Plan and Elevation (Sheet)
FILE NAME: c:\paw_work\jackson\illinois.gov_derek.snider\09053196D978A55-Shld-Typicals_1.dgn

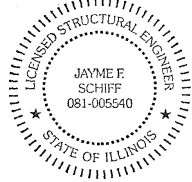


GENERAL NOTES

- Reinforcement bars designated (E) shall be epoxy coated.
- Prior to pouring the new concrete deck section, all heavy or loose rust, loose mill scale, and other loose or potentially detrimental foreign material shall be removed from the surfaces in contact with concrete. Tightly adhered paint may remain unless otherwise noted. Removal shall be accomplished by methods that will not damage the steel and the cost will be included in the pay item covering removal of the existing concrete.
- Plan dimensions and details relative to existing plans are subject to nominal construction variations. The Contractor shall field verify existing dimensions and details affecting new construction or ordering of materials. Such variations shall not be cause for additional compensation for a change in scope of the work, however, the Contractor will be paid for the quantity actually furnished at the unit price bid for the work.
- Existing reinforcement bars extending into the removal area shall be cleaned, straightened and incorporated into the new construction. Any reinforcement bars that are damaged during concrete removal shall be replaced with an approved bar splicer or anchorage system. Cost included with Concrete Removal.
- Joint openings shall be adjusted according to Article 520.04 of the Std. Specs. when the deck is poured at an ambient temperature other than 50°F.
- Protective coat shall be applied to the top and inside faces of all new concrete curb and all new concrete at joints.
- Removal of existing 8" HMA / 2" Aggregate to install the 10" PCC Base Course Widening is included in Paved Shoulder Removal.

SCOPE OF WORK

Abutment Joint Reconstruction



EXPIRES 11-30-2024

Jayme F. Schiuff

DESIGN STRESSES

(From Existing Plans)
Design Loading HL 93
Design Stresses
fy=60,000 psi (Reinf.)
fy=50,000 psi (M270 Grade 50W) (Girders)

TOTAL BILL OF MATERIAL

ITEM	UNIT	QUANTITY
Concrete Removal	Cu. Yd.	23.9
Concrete Superstructure	Cu. Yd.	23.9
Protective Coat	Sq. Yd.	36
Reinforcement Bars, Epoxy Coated	Pound	2700
Bar Splicers	Each	28
Preformed Joint Strip Seal	Foot	88

JOINT RECONSTRUCTION
IL 4 OVER BEAUCOUP CREEK
FAP 686 - 114BJR-1
JACKSON COUNTY
STRUCTURE NO. 039-0074

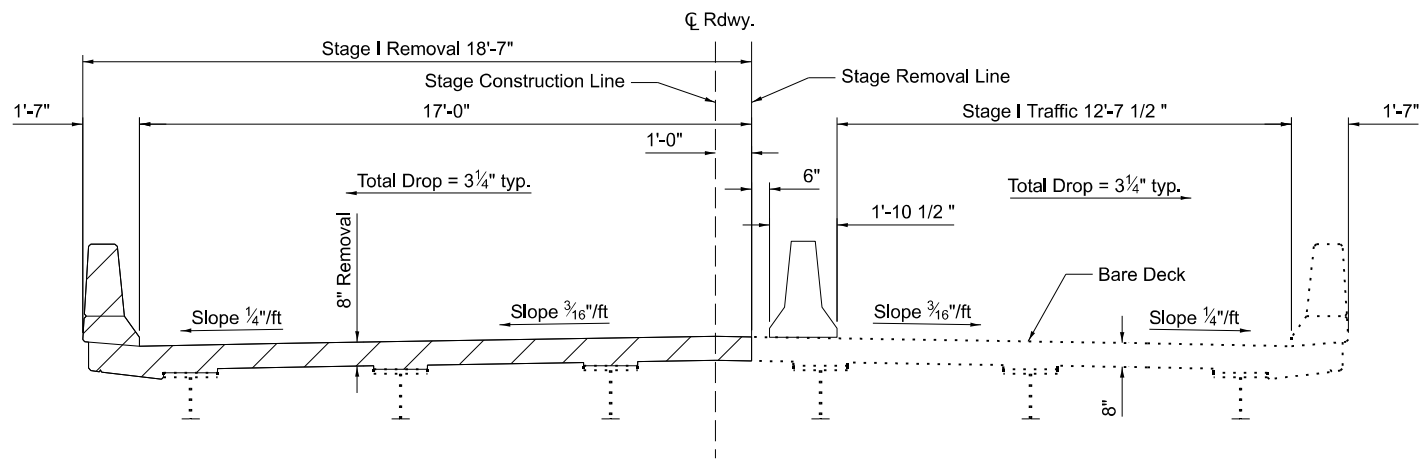
USER NAME = derek.snider	DESIGNED -	REVISED -
	DRAWN -	REVISED -
PLOT SCALE = 0.16666633' / in.	CHECKED -	REVISED -
PLOT DATE = 4/16/2024	DATE -	REVISED -

STATE OF ILLINOIS
DEPARTMENT OF TRANSPORTATION

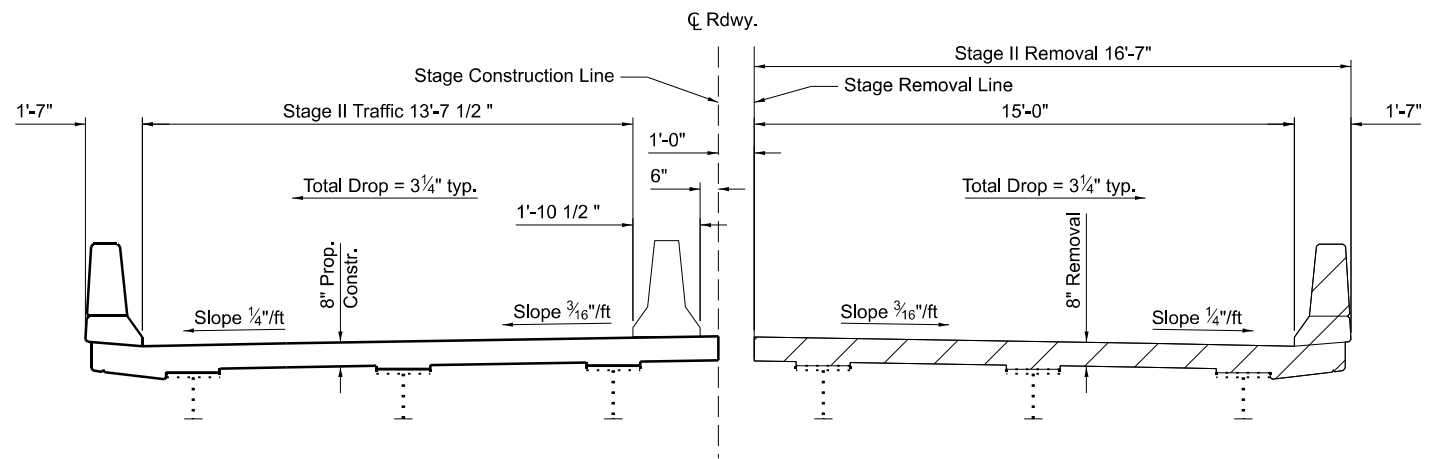
GENERAL PLAN AND ELEVATION
SN 039-0074

SCALE: SHEET OF 14 SHEETS STA. TO STA.

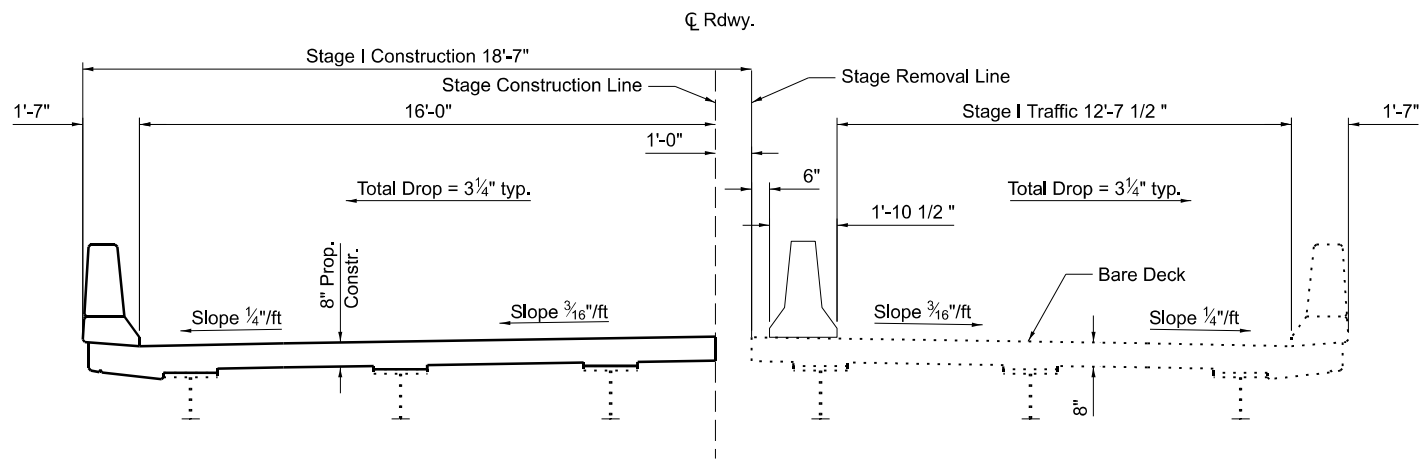
F.A.P. RTE.	SECTION	COUNTY	TOTAL SHEETS	SHEET NO.
686	114BJR-1	JACKSON	14	6
CONTRACT NO. 78A55				
ILLINOIS FED. AID PROJECT				



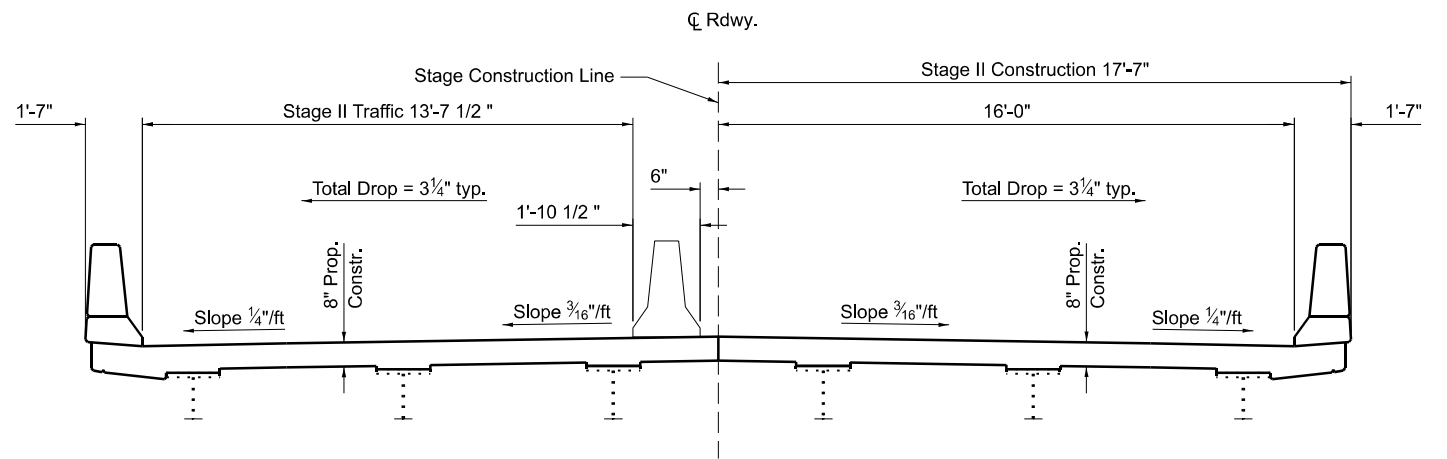
STAGE I REMOVAL
(Looking East/ Ahead Station)



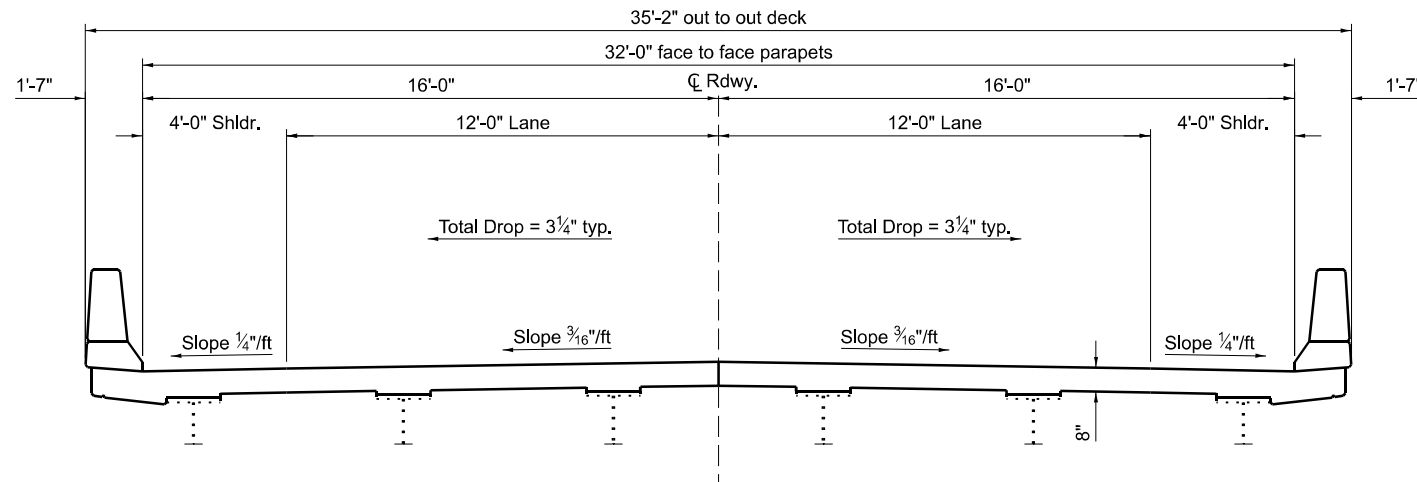
STAGE II REMOVAL
(Looking East/ Ahead Station)




STAGE I CONSTRUCTION
(Looking East/ Ahead Station)



STAGE II CONSTRUCTION
(Looking East/ Ahead Station)



TYPICAL SECTION
(Looking East/ Ahead Station)

 Concrete Removal at Joint Reconstruction

MODEL: Typicals and Staging SN 039-0074 [Sheet]
FILE NAME: c:\paw_work\pawd\illinois.gov_derek.snider\0953196\0978A55-Shd-Typicals_1.dgn

USER NAME = derek.snider	DESIGNED -	REVISED -
DRAWN -	REVISD -	
PLOT SCALE = \$\$SCALE\$	CHECKED -	REVISED -
PLOT DATE = 4/15/2024	DATE -	REVISED -

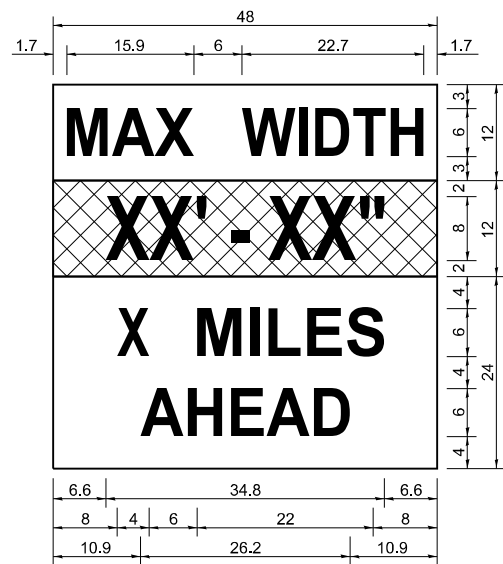
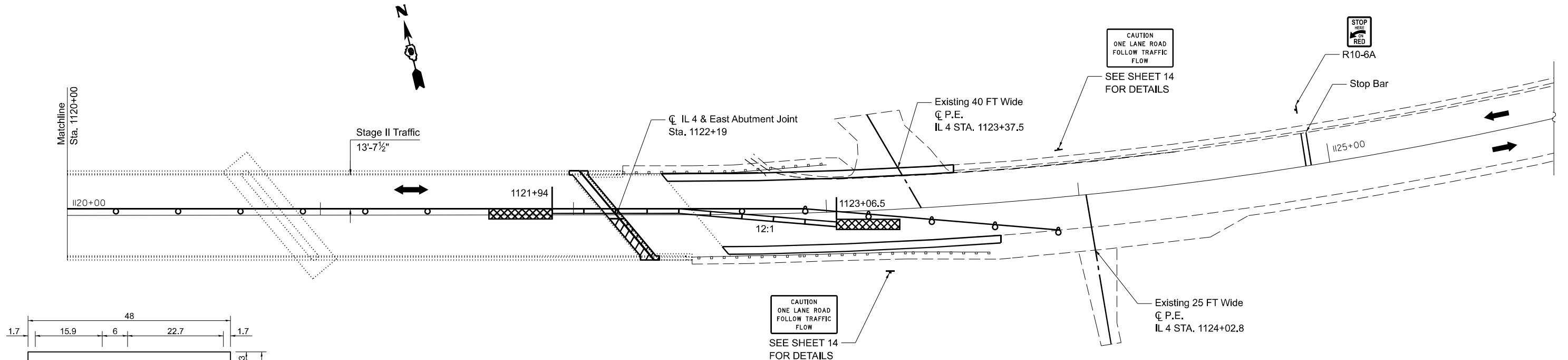
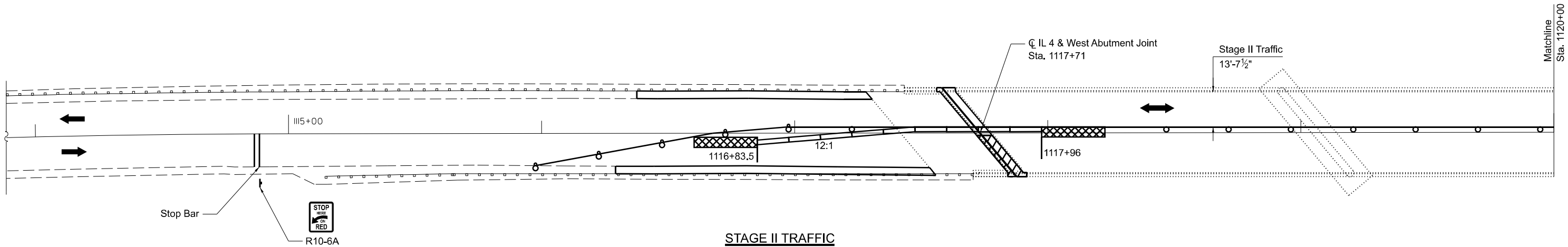
STATE OF ILLINOIS
DEPARTMENT OF TRANSPORTATION

TYPICAL AND STAGING
SN 039-0074

SCALE: SHEET OF 14 SHEETS STA. TO STA.

F.A.P RTE.	SECTION	COUNTY	TOTAL SHEETS	SHEET NO.
686	114BJR-1	JACKSON	14	7
CONTRACT NO. 78A55				
ILLINOIS FED. AID PROJECT				

MODEL: Stage II [Sheet]
FILE NAME: c:\p\work\wilson\dad0953196\DWG\78A55-Sign-Details_1.dgn



W12-I103 (WIDTH IS 80)
NO BORDER, BLACK ON WHITE:
[MAX WIDTH] D:

NO BORDER, BLACK ON ORANGE:
[XX' - XX\"] D:

NO BORDER, BLACK ON WHITE:
[X MILES] D: [AHEAD] D:

ALL DIMENSIONS ARE IN INCHES UNLESS
OTHERWISE NOTED.

Notes for Max Width Sign:

1. Install a Max Width Sign each direction on IL 4 to give traffic approaching work zone enough advance notice to change routes if needed. Exact locations as directed by the Engineer.
2. The Contractor shall furnish the posts and erect the signs at the locations directed by the Engineer. All signs shall be post mounted.
3. The noted work, including signs, posts, hardware and labor shall be included in the contract unit price, Each, for Traffic Control and Protection, Std. 701321. No other compensation will be allowed.
4. The width shown on the W12-I103 sign shall be 18" less than what is shown in the staged lane widths or as directed by the Engineer.
5. The "X" MILES AHEAD will be determined by the Engineer.

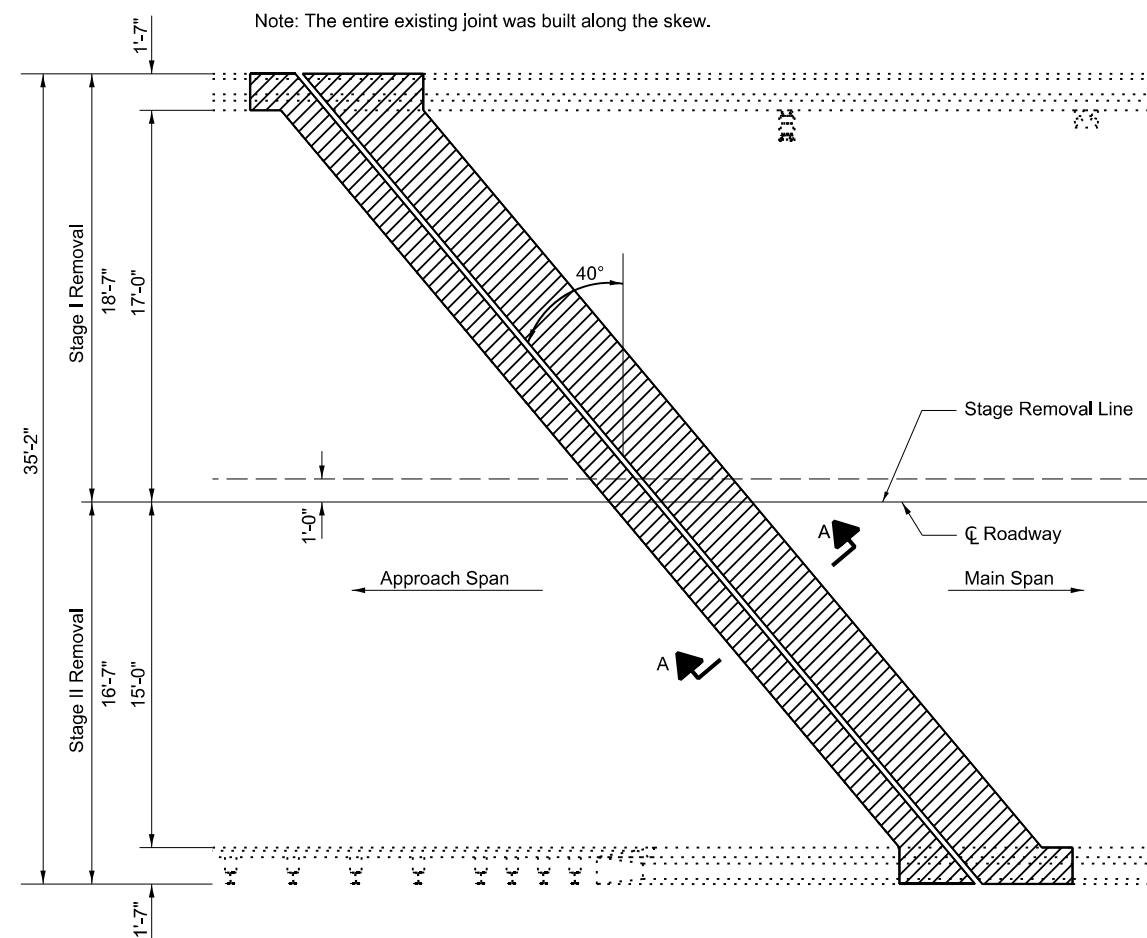
- Impact Attenuators, Temporary (Fully Redirective, Narrow), Test Level 3
- PCC Base Course Widening 10"
- Joint Reconstruction

STATE OF ILLINOIS
DEPARTMENT OF TRANSPORTATION

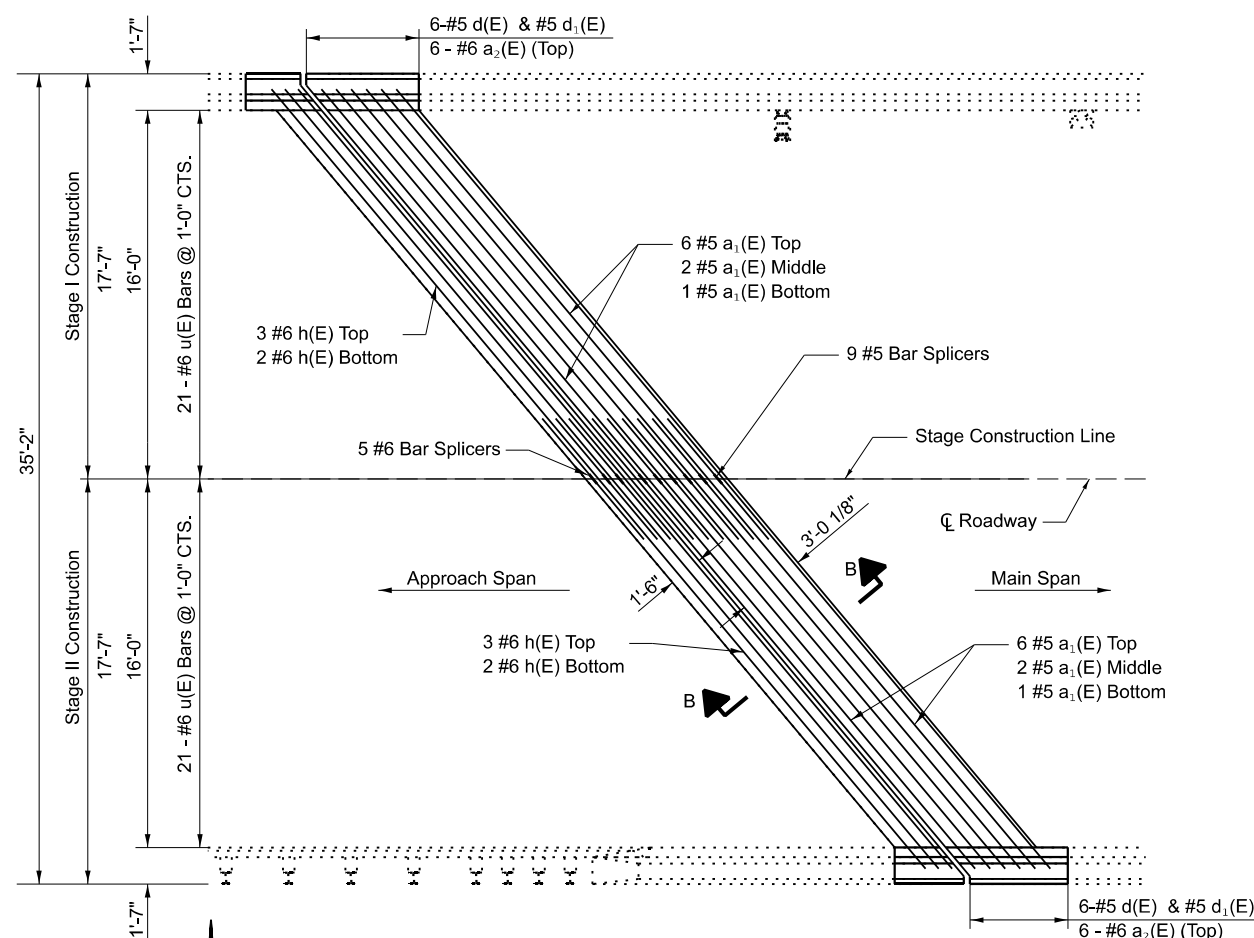
STAGE II DETAILS

SCALE: SHEET OF 14 SHEETS STA. TO STA.

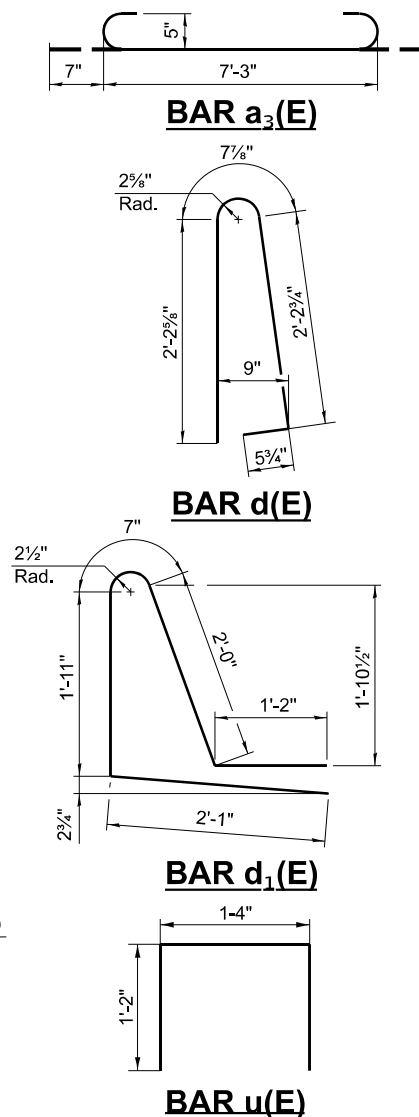
F.A.P. RTE.	SECTION	COUNTY	TOTAL SHEETS	SHEET NO.
686	114BJR-1	JACKSON	14	9
CONTRACT NO. 78A55				
ILLINOIS FED. AID PROJECT				










JOINT AT W. ABUTMENT
SHOWING CONCRETE REMOVAL
(E. Abutment Similar)



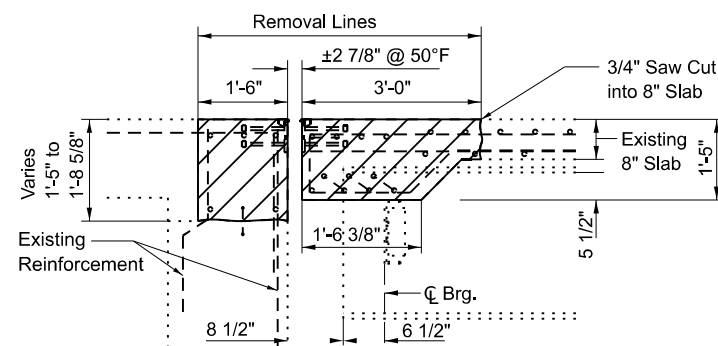
JOINT AT W. ABUTMENT
SHOWING NEW CONCRETE
(E. Abutment Similar)



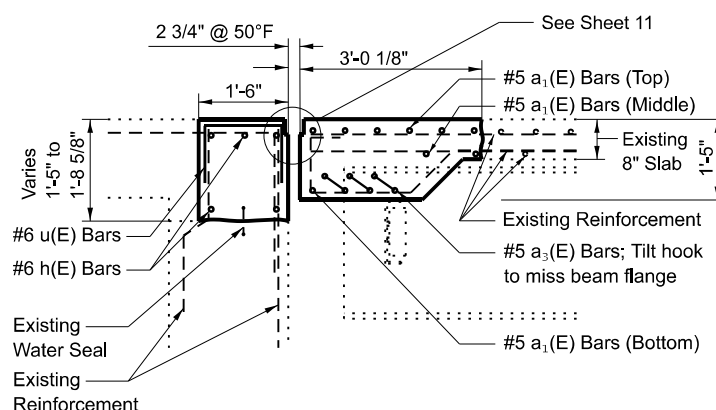
BILL OF MATERIALS

Bar	No.	Size	Length	Shape
a ₁ (E)	36	#5	22'-0"	
a ₂ (E)	24	#6	4'-0"	
a ₃ (E)	30	#5	8'-5"	
d(E)	24	#5	5'-7"	
d ₁ (E)	24	#5	7'-9"	
h(E)	20	#6	22'-0"	
u(E)	84	#6	3'-8"	
Bar Splicer			Each	28
Concrete Superstructure			Cu. Yd.	23.9
Concrete Removal			Cu. Yd.	23.9
Reinforcement Bars, Epoxy Coated			Pound	2700

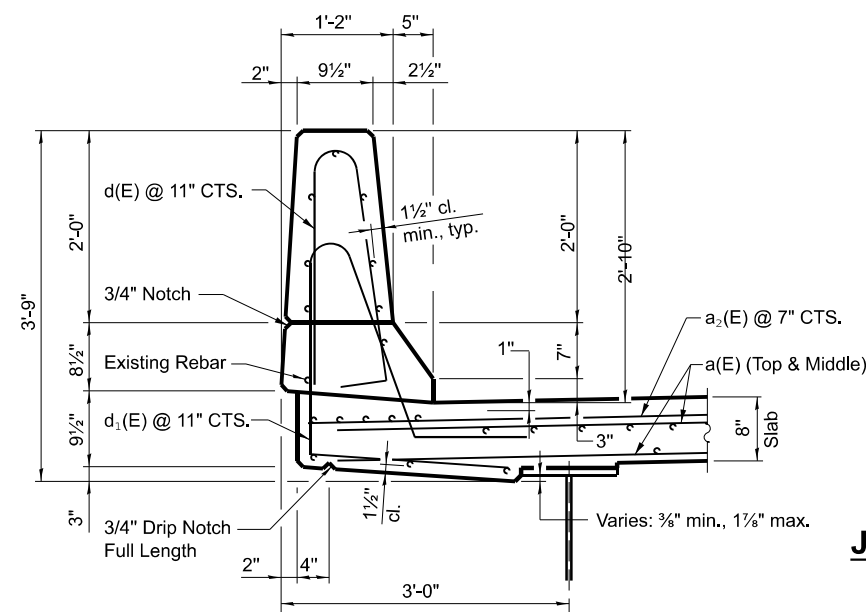
JOINT RECONSTRUCTION DETAILS
IL 4 OVER BEAUCOUP CREEK
FAP 686 - 114BJR-1
JACKSON COUNTY
STRUCTURE NO. 039-0074



SECTION A-A
(Dimensions are at Right Angles)

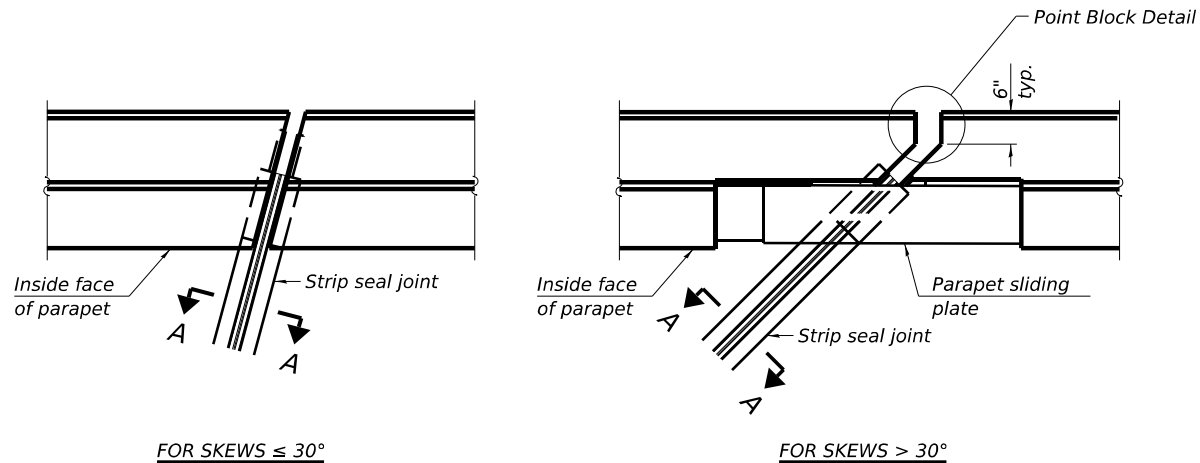


SECTION B-B
(Dimensions are at Right Angles)

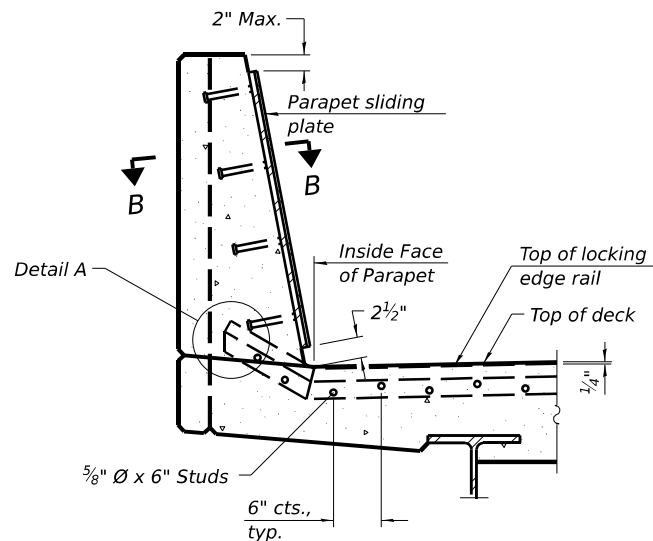


SECTION THROUGH PARAPET

MODEL: Preformed Joint Strip Seal Detail (Sheet)
FILE NAME: c:\pwworking\illinois.gov\derek.snider\0953196\0953196-D978A55-SHS-DistrictStds.dgn

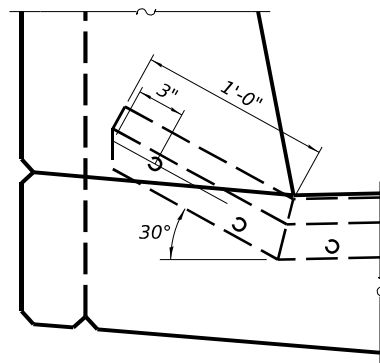


PLAN AT PARAPET

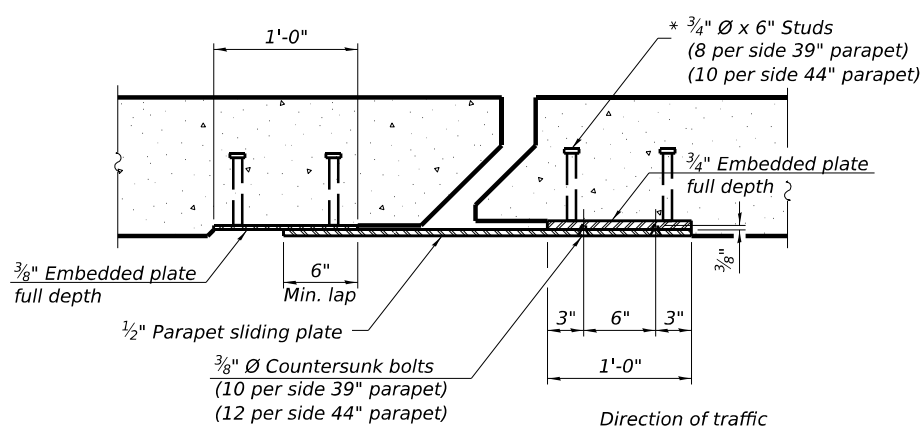


SECTION AT PARAPET

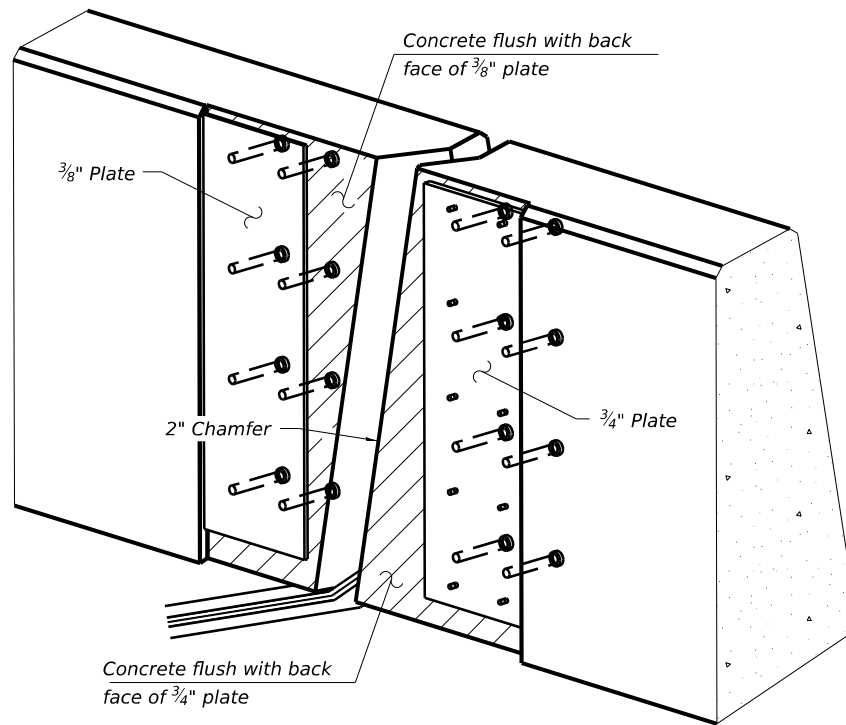
(Skews $> 30^\circ$ shown. Skews $\leq 30^\circ$ similar except as shown in plan view.)



DETAIL A

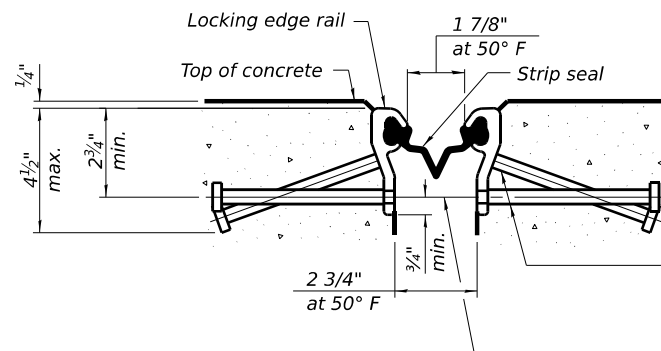


SECTION B-B



TRIMETRIC VIEW

(Showing embedded plates only)

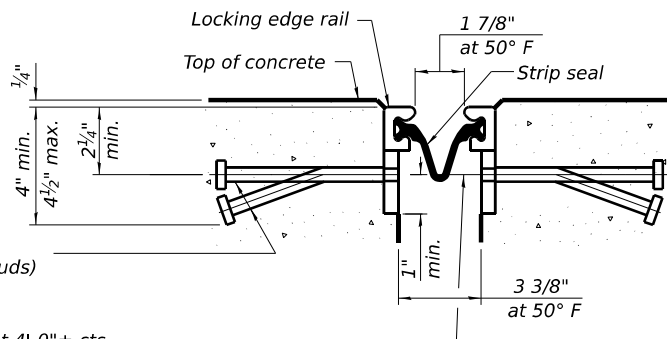


SHOWING ROLLED RAIL JOINT

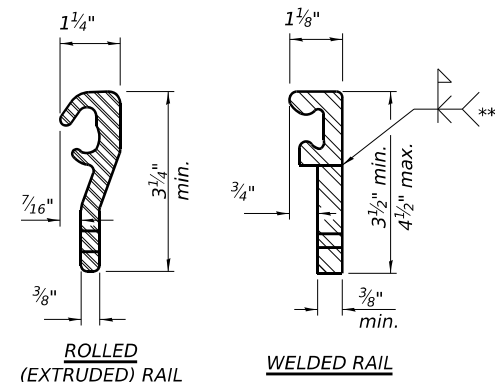
3/8" \varnothing threaded rods in 7/16" \varnothing holes at 4'-0" \pm cts. for holding the proper joint opening based on the temperature during the deck pour. Place to miss studs. All rods shall be burned, or sawed off flush with the plates after concrete is set.

SECTION A-A

* Granular or solid flux filled headed studs conforming to Article 1006.32 of the Std. Specs., automatically end welded.

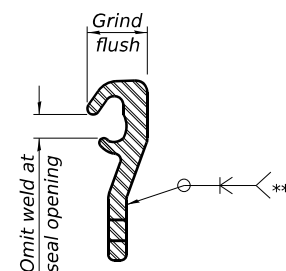


SHOWING WELDED RAIL JOINT



LOCKING EDGE RAILS

** Back gouge not required if complete joint penetration is verified by mock-up.



LOCKING EDGE RAIL SPLICE

The inside of the locking edge rail groove shall be free of weld residue. Rolled rail shown, welded rail similar.

BILL OF MATERIAL

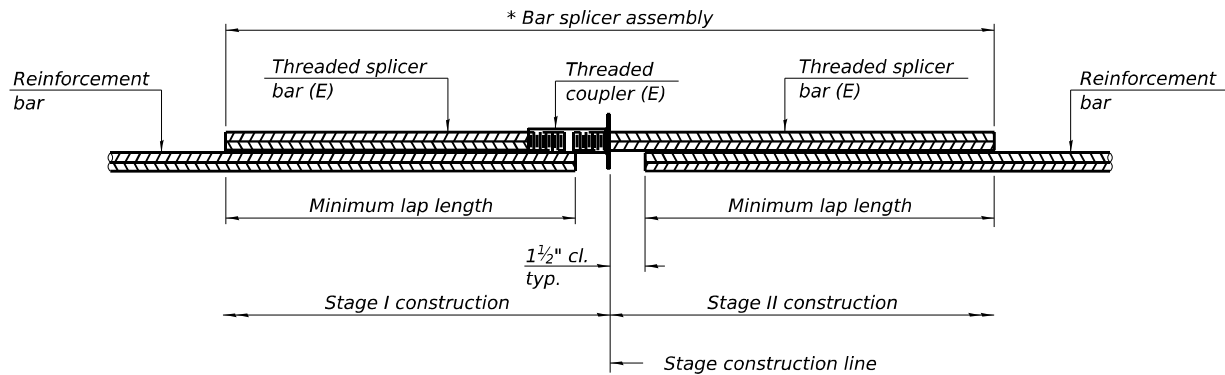
Item	Unit	Total
Preformed Joint Strip Seal	Foot	88

STATE OF ILLINOIS
DEPARTMENT OF TRANSPORTATION

PREFORMED JOINT STRIP SEAL DETAILS

SCALE: SHEET OF 14 SHEETS STA. TO STA.

F.A.P. RTE.	SECTION	COUNTY	TOTAL SHEETS	SHEET NO.
686	114BJR-1	JACKSON	14	11
CONTRACT NO. 78A55				
ILLINOIS FED. AID PROJECT				



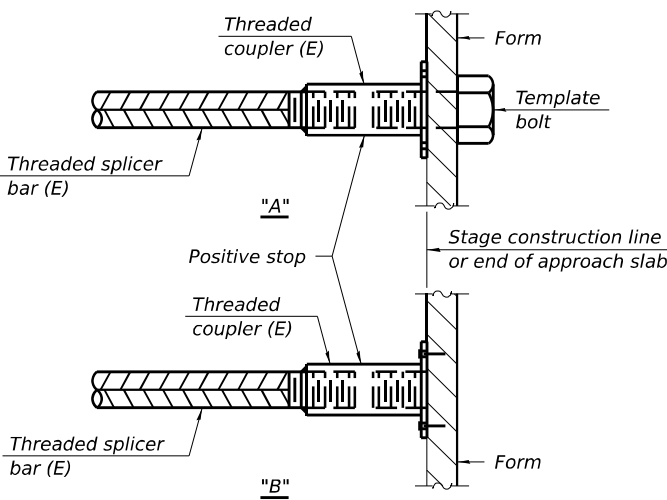
STANDARD BAR SPLICER ASSEMBLY PLAN

Only bar splicer assemblies as presented on the approved QPL list may be used.

Threaded splicer bar length = min. lap length + 1½" + thread length

* Epoxy not required on Bar Splicer Assembly components used in conjunction with black bars.

Location	Bar size	No. assemblies required	Minimum lap length
Deck	#5	18	3'-2"
Hatchblock	#6	10	3'-10"

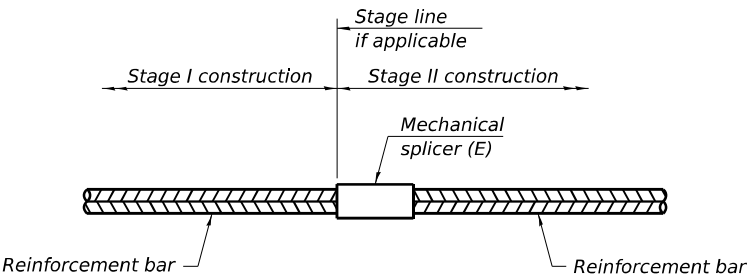


INSTALLATION AND SETTING METHODS

"A" : Set bar splicer assembly by means of a template bolt.

"B" : Set bar splicer assembly by nailing to wood forms or cementing to steel forms.

(E) : Indicates epoxy coating.



STANDARD MECHANICAL SPLICER

Location	Bar size	No. assemblies required

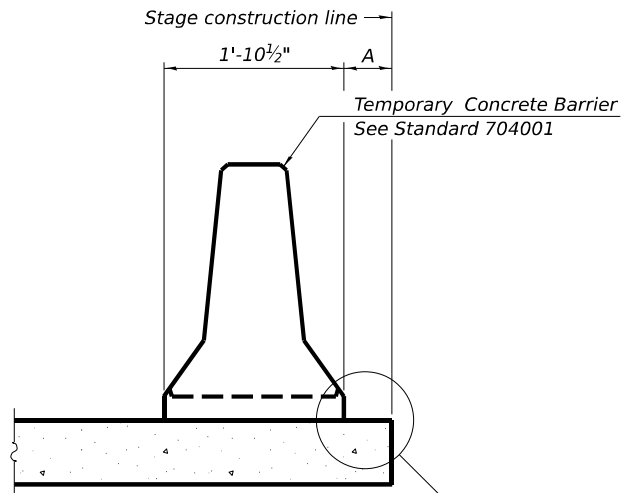
Notes:
Splicer bars shall be deformed with threaded ends and have a minimum 60 ksi yield strength.
All reinforcement shall be lapped and tied to the splicer bars.
Bar splicer assemblies shall be epoxy coated according to the requirements for reinforcement bars. See Section 508 of the Standard Specifications.
See approved list of bar splicer assemblies and mechanical splicers for alternatives.

BSD-1

5-15-2023

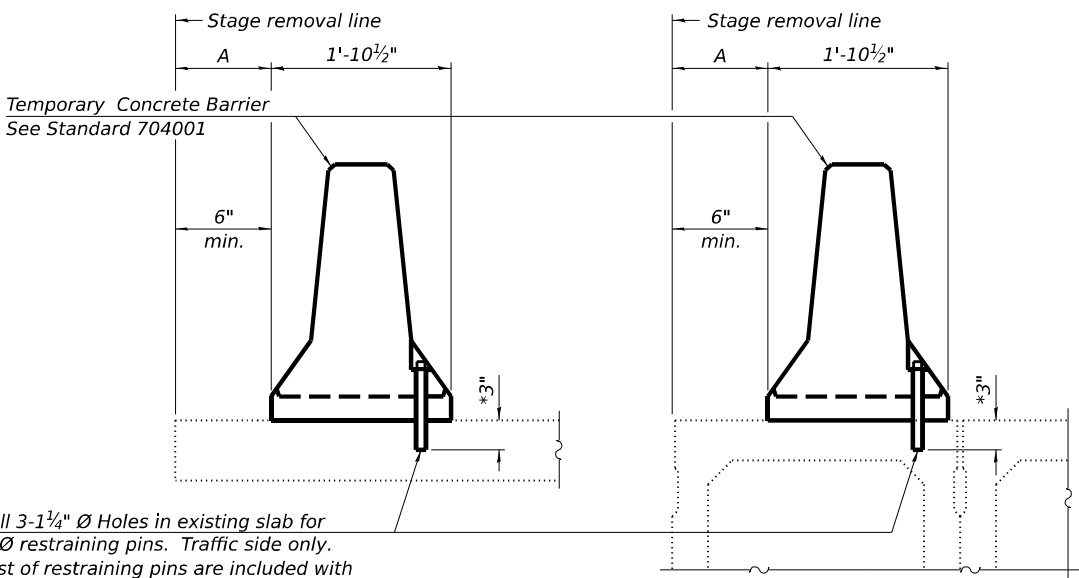
MODEL: Bar Splicer and Mechanical Splicer Detail (Sheet)
FILE NAME: c:\paw\work\wilson\aud0953196\ID978455-Sys-District\Status.dgn

	USER NAME = david.a.wilson	DESIGNED -	REVISED -	STATE OF ILLINOIS DEPARTMENT OF TRANSPORTATION	BAR SPLICER AND MECHANICAL SPLICER DETAILS			F.A.P RTE.	SECTION	COUNTY	TOTAL SHEETS	SHEET NO.
	PLOT SCALE = 0.16666633" / in.	DRAWN -	REVISED -					686	114BJR-1	JACKSON	14	12
	PLOT DATE = 3/13/2024	CHECKED -	REVISED -		SCALE: SHEET OF 14 SHEETS STA. TO STA.			CONTRACT NO. 78A55				
		DATE -	REVISED -					ILLINOIS FED. AID PROJECT				



When "A" is 3'-1" or less, the temporary concrete barrier shall be restrained to the new slab according to Detail I, II or III. No restraint is required when "A" is greater than 3'-1".

NEW SLAB OR NEW DECK BEAM

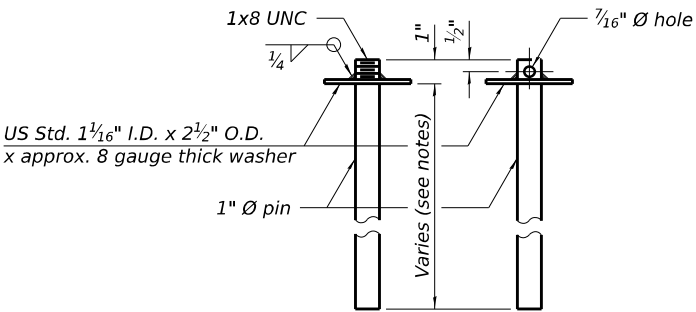


Drill 3-1 1/4" Ø Holes in existing slab for 1" Ø restraining pins. Traffic side only. Cost of restraining pins are included with Temporary Concrete Barrier. No restraint is required when "A" is greater than 3'-1".

EXISTING SLAB

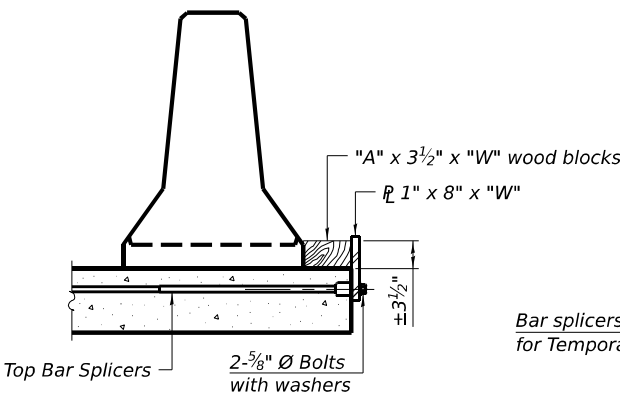
* When hot-mix asphalt wearing surface is present, embedment shall be 3" plus the wearing surface depth.

EXISTING DECK BEAM

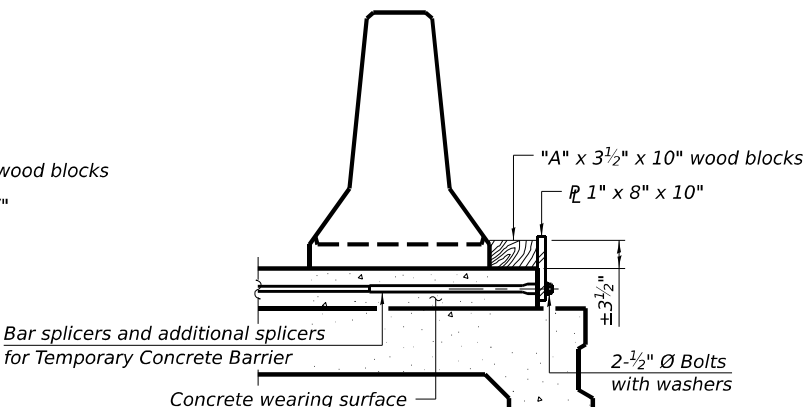


RESTRAINING PIN

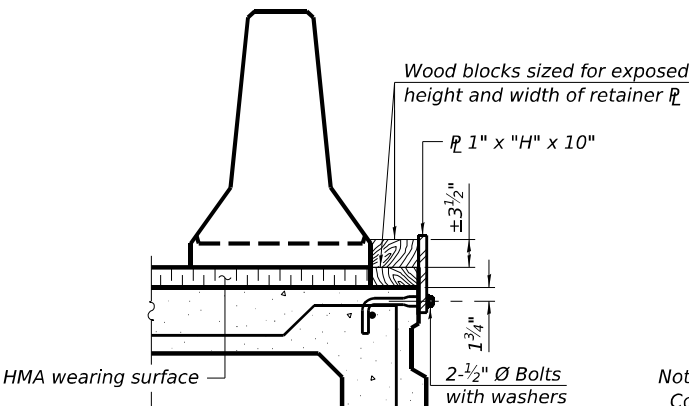
SECTIONS THRU SLAB OR DECK BEAM



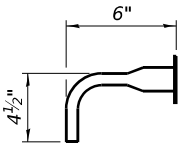
DETAIL I



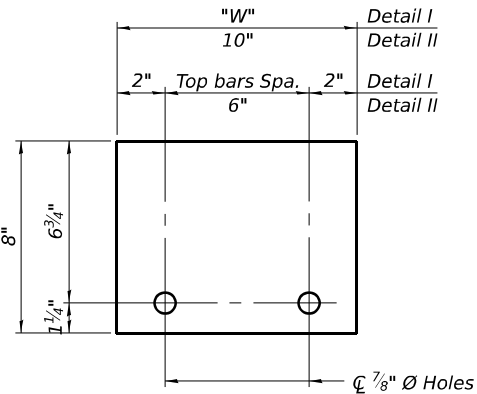
DETAIL II



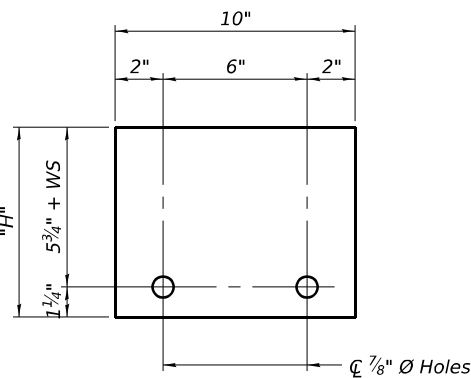
DETAIL III



BAR SPLICER FOR #4 BAR - DETAIL III



STEEL RETAINER 1" x 8" x "W"
(Detail I and II)



STEEL RETAINER 1" x "H" x 10"
(Detail III)

Notes:
Cost of retainer assembly is included with Temporary Concrete Barrier. A retainer assembly shall be located at the approximate C of each temporary concrete barrier.
The retainer plate shall not be removed until the concrete on the adjacent stage is ready to be poured. For Detail III applications the retainer plate shall not be removed until just prior to placing the adjacent beam.
When the 'A' dimension is less than 1 1/2", the wood block shall be omitted and the barrier shall be placed in direct contact with the steel retainer plate. For deck beam applications the minimum required 'A' distance is 6" to accommodate the shear key clamping device.

Detail I - Installation for a new bridge deck or bridge slab.
Detail II - Installation for a new deck beam with an initial concrete wearing surface. Additional bar splicers shall be provided at 6'-0" centers and paired with the bar splicers of the concrete wearing surface reinforcement to accommodate the installation of the retainer assemblies. The cost of the additional bar splicers is included with the concrete wearing surface.
Detail III - Installation for a new deck beam with no initial wearing surface or with an initial hot-mix asphalt (HMA) wearing surface present. The deck beam directly beneath the temporary concrete barrier shall be fabricated with bar splicer inserts in the side of the beam, as detailed, to accommodate the installation of the retainer assemblies. A pair of bar splicers, 6" apart, shall be placed at 6'-0" centers along the length of the beam. The cost of the bar splicers is included with the deck beam.

RAILING CRITERIA

NCHRP 350 Test Level	3
Railing Weight (plf)	440

R-27

5-15-2023

STATE OF ILLINOIS
DEPARTMENT OF TRANSPORTATION

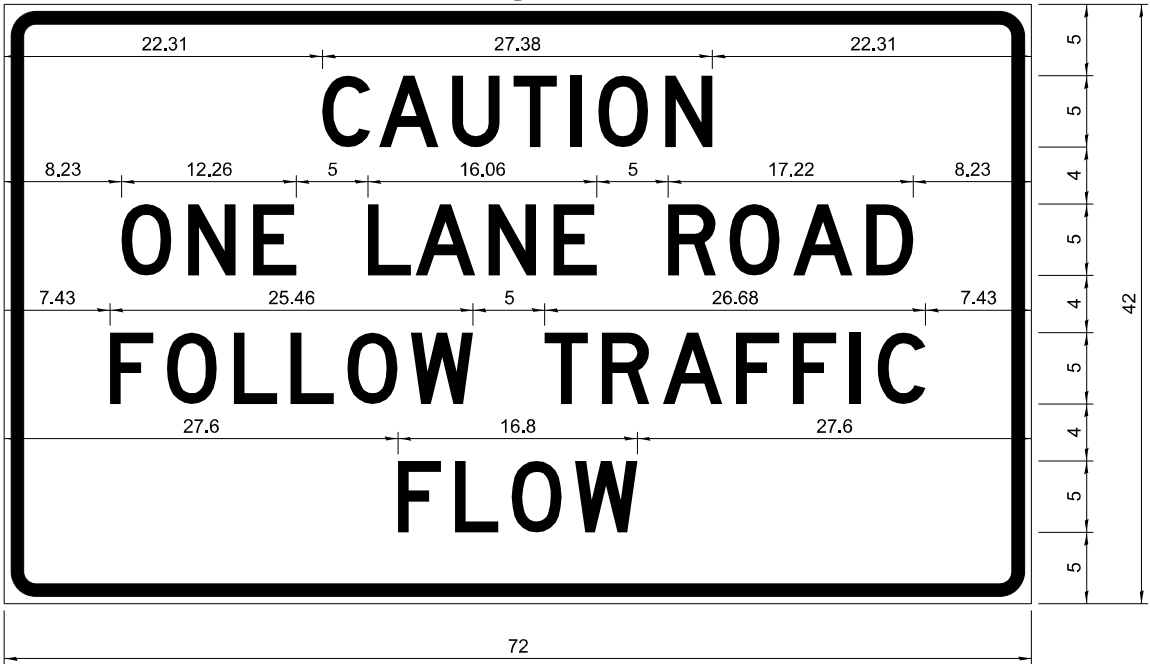
TEMPORARY CONCRETE BARRIER DETAILS

SCALE: SHEET OF 14 SHEETS STA. TO STA.

F.A.P. RTE.	SECTION	COUNTY	TOTAL SHEETS	SHEET NO.
686	114BJR-1	JACKSON	14	13
CONTRACT NO. 78A55				
ILLINOIS FED. AID PROJECT				

ENTRANCE SIGN FOR USE
WITH TEMPORARY SIGNALS

2



COLOR LEGEND AND BORDER BLACK NON-REFLECTORIZED
 ORANGE REFLECTORIZED

2.25" Radius, 0.88" Border, 0.50" Indent;
[CAUTION] D; [ONE LANE ROAD] D;
[FOLLOW TRAFFIC] D; [FLOW] D

2 This sign shall be installed at entrances located between the temporary signals as shown in the staging plans.

Table Of Widths And Spaces

22.31	C	3.36	0.62	A	4.18	0.94	U	3.36	0.94	T	3.04	0.94	I	0.78	1.17	O	3.52	1.17	N	3.36	22.31
-------	---	------	------	---	------	------	---	------	------	---	------	------	---	------	------	---	------	------	---	------	-------

8.23	O	3.51	1.17	N	3.36	1.18	E	3.04
------	---	------	------	---	------	------	---	------

5.00	L	3.05	0.31	A	4.18	0.94	N	3.36	1.17	E	3.05
------	---	------	------	---	------	------	---	------	------	---	------

5.00	R	3.36	0.93	O	3.52	0.94	A	4.18	0.93	D	3.36	8.23
------	---	------	------	---	------	------	---	------	------	---	------	------

7.43	F	3.04	0.94	O	3.52	1.17	L	3.04	0.94	L	3.05	0.94	O	3.51	0.94	W	4.37
------	---	------	------	---	------	------	---	------	------	---	------	------	---	------	------	---	------

5.00	T	3.05	0.94	R	3.36	0.94	A	4.18	0.93	F	3.05	0.94	F	3.04	0.94	I	0.78	1.18	C	3.35	7.43
------	---	------	------	---	------	------	---	------	------	---	------	------	---	------	------	---	------	------	---	------	------

27.60	F	3.05	0.94	L	3.04	0.94	O	3.52	0.93	W	4.38	27.60
-------	---	------	------	---	------	------	---	------	------	---	------	-------

GENERAL NOTES

All work to furnish and install these signs shall be included in the cost of the specified traffic control standards and shall not be paid separately.

All Illinois Standard signs shall conform to the latest edition of the "Illinois Standard Highway Signs Book" in effect on the date of invitation for bids.

Signs shall meet the applicable portions of Sections 701 and 720 of the Standard Specifications.

All dimensions are in inches unless otherwise noted.

DRAWN	3-2-16 D2
REVISED	03-12-24
REVISED	
REVISED	

Sign not to scale

STD. 9-34

MODEL: Caution One Lane Road (Sheet)
FILE NAME: c:\paw\wilson\standard\0953196\ID978A55-Signs-DistrictSigns.dgn

	USER NAME = david.a.wilson	DESIGNED -	REVISED -	STATE OF ILLINOIS DEPARTMENT OF TRANSPORTATION	CAUTION ONE LANE ROAD SIGN DETAILS			F.A.P. RTE.	SECTION	COUNTY	TOTAL SHEETS	SHEET NO.
		DRAWN -	REVISED -					686	114BJR-1	JACKSON	14	14
		CHECKED -	REVISED -					CONTRACT NO. 78A55				
	PLOT DATE = 3/13/2024	DATE -	REVISED -		SCALE:	SHEET	OF 14 SHEETS	STA.	TO STA.	ILLINOIS FED. AID PROJECT		