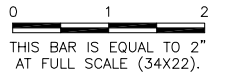


BASE_PROP_MARK

UN052

REVISIONS		
NUMBER	BY	DATE



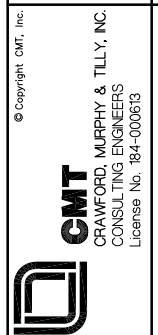
SIGN SCHEDULE			
SIGN	TYPE	NORTHING	EASTING
1	EAST - TYPE 13	1228303.76	1002934.34
2	NORTH - TYPE 1	1228344.35	1002799.51
3	EAST - TYPE 8	1228308.81	1002739.07
4	EAST - TYPE 7	1228501.30	1002311.87
5	SOUTH - TYPE 4R TYPE 2L	1228562.12	1002239.54
6	SOUTHWEST - TYPE 4R TYPE 2L	1228597.74	1002195.97
7	SOUTHWEST - TYPE 4R TYPE 2L	1228638.56	1002149.06
8	NORTHWEST - TYPE 3 TYPE 7	1228775.89	1001992.81
9	NORTH - TYPE 1 TYPE 2R	1228725.02	1001976.41
10	SOUTHEAST - TYPE 12	1228640.55	1001930.32
11	SOUTHEAST - TYPE 12	1228615.26	1001904.67
12	EAST - TYPE 4R TYPE 2L	1228573.35	1001882.11
13	SOUTHWEST - TYPE 4R TYPE 2L	1228686.22	1002045.01
14	SOUTHEAST - TYPE 9	1228567.95	1001944.99
15	SOUTHEAST - TYPE 9	1228561.63	1001938.58
16	SOUTHEAST - TYPE 9	1228555.31	1001932.17
17	SOUTHEAST - TYPE 9	1228548.99	1001925.77
18	SOUTHEAST - TYPE 9	1228542.67	1001919.36
19	SOUTHEAST - TYPE 9	1228536.35	1001912.95
20	SOUTHEAST - TYPE 9	1228530.04	1001906.54
21	NORTHWEST - TYPE 6 SOUTHEAST - TYPE 6	1228523.72	1001900.13
22	SOUTHEAST - TYPE 6	1228511.08	1001887.31
23	EAST - TYPE 4R TYPE 2L	1228489.86	1001885.74

SIGN SCHEDULE			
SIGN	TYPE	NORTHING	EASTING
24	SOUTHWEST - TYPE 4R TYPE 2L	1228645.40	1002091.92
25	SOUTHEAST - TYPE 6	1228441.65	1001905.21
26	NORTHWEST - TYPE 6	1228435.34	1001898.80
27	SOUTHEAST - TYPE 6	1228429.02	1001892.39
28	NORTHEAST - TYPE 4R TYPE 2L	1228409.83	1001892.87
29	NORTHWEST - TYPE 11	1228403.82	1001955.15
30	NORTHWEST - TYPE 11 SOUTHEAST - TYPE 10	1228397.51	1001948.74
31	NORTHWEST - TYPE 11 SOUTHEAST - TYPE 10	1228391.19	1001942.33
32	NORTHWEST - TYPE 6 SOUTHEAST - TYPE 6	1228378.55	1001929.51
33	NORTHEAST - TYPE 4R TYPE 2L	1228362.61	1001933.29
34	NORTHEAST - TYPE 4R TYPE 2L	1228319.83	1001978.21
35	SOUTHEAST - TYPE 4R TYPE 2L	1228301.78	1002077.15
36	NORTHEAST - TYPE 6	1228269.41	1002129.87
37	NORTHEAST - TYPE 6	1228255.13	1002143.88
38	SOUTHEAST - TYPE 4R TYPE 2L	1228350.78	1002127.13
39	SOUTHEAST - TYPE 4R TYPE 2L	1228399.78	1002177.12
40	NORTHEAST - TYPE 6 SOUTHWEST - TYPE 6	1228303.14	1002292.85
41	NORTHEAST - TYPE 6 SOUTHWEST - TYPE 6	1228288.86	1002306.85
42	SOUTHEAST - TYPE 4R TYPE 2L	1228448.78	1002227.11
43	EAST - TYPE 3	1228469.80	1002318.85
44	WEST - TYPE 5	1228262.45	1002520.70
45	WEST - TYPE 8	1228266.12	1002607.31

NOTE:
SEE SIGNAGE DETAILS FOR SIGN TYPE.

UNIVERSITY OF ILLINOIS
 WILLARD AIRPORT
 SAVOY, ILLINOIS

RELOCATE ENTRANCE ROADWAY &
 REHABILITATE OLD TERMINAL PARKING LOT
 SIGNAGE SCHEDULE



DESIGN BY:	CBG
DRAWN BY:	CMT
CHECKED BY:	KLB
APPROVED BY:	CET
DATE:	4/19/2013
JOB No:	11059-05-00

IL PROJ. NO. CMI-4269