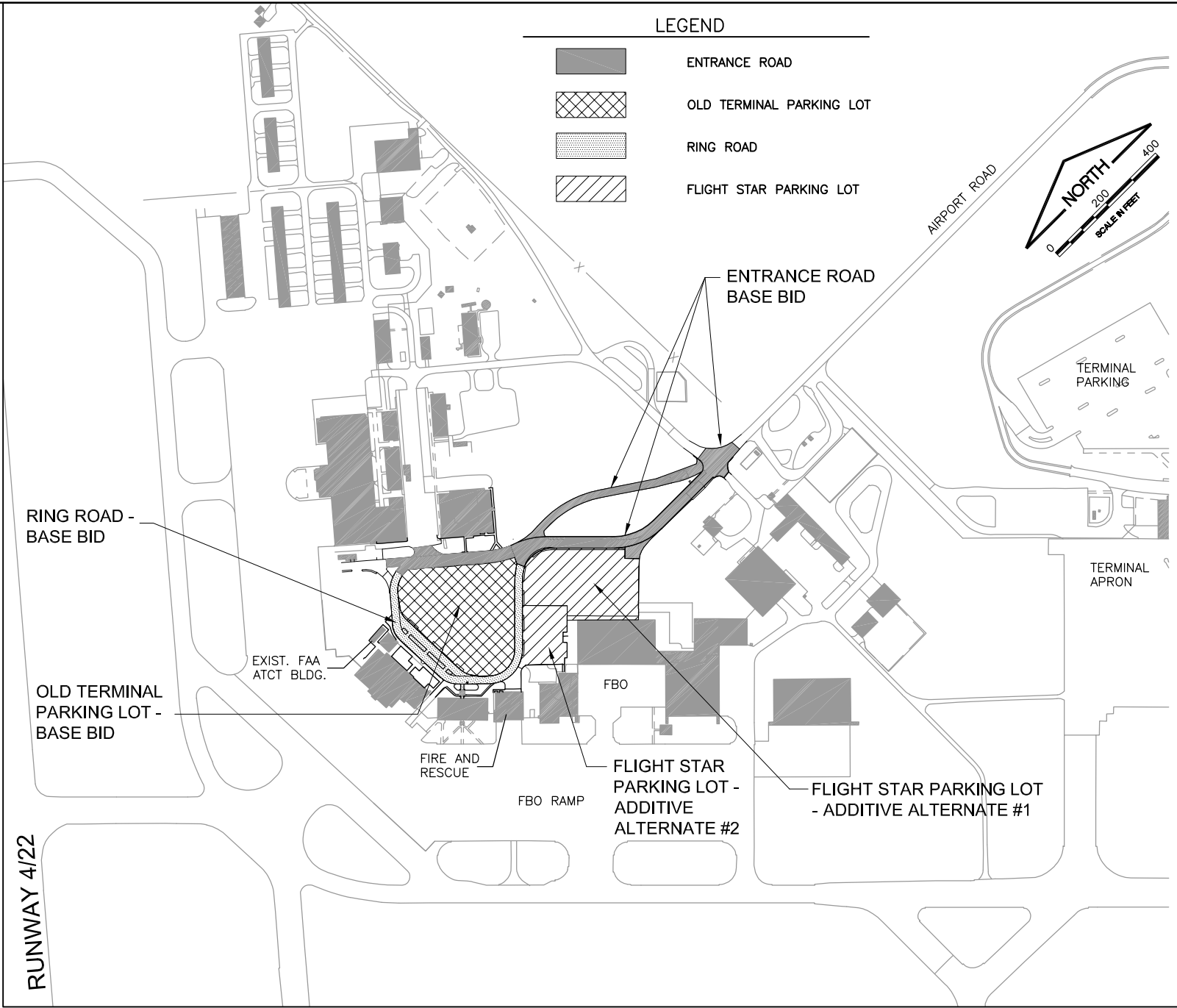


SUMMARY OF QUANTITIES								
Item Number	Item Description	Unit	Total Project Quantity	Entrance Road Quantity	Ring Road Quantity	Old Terminal Parking Lot Quantity	Flight Star Parking Lot Quantity	
							Additive Alternate #1	Additive Alternate #2
BASE BID								
AR150510	ENGINEER'S FIELD OFFICE	LS	1	1	0	0	0	0
AR152410	UNCLASSIFIED EXCAVATION	CY	550	250	300	0	0	0
AR156510	SILT FENCE	LF	1515	1515	0	0	0	0
AR156520	INLET PROTECTION	EA	3	3	0	0	0	0
AR201863	SAND MIX CRACK REPAIR	LF	475	0	0	475	0	0
AR209608	CRUSHED AGGREGATE BASE - 8"	SY	2895	560	2185	150	0	0
AR401610	BITUMINOUS SURFACE COURSE	TON	1885	680	275	930	0	0
AR401650	BITUMINOUS PAVEMENT MILLING	SY	13045	3125	190	9730	0	0
AR401655	BUTT JOINT CONSTRUCTION	SY	765	710	55	0	0	0
AR401900	REMOVE BITUMINOUS PAVEMENT	SY	60	0	0	60	0	0
AR401921	REMOVE PAVEMENT	SY	1450	1450	0	0	0	0
AR403610	BITUMINOUS BASE COURSE	TON	340	65	255	20	0	0
AR403620	BITUMINOUS BASE COURSE, LEVELING	TON	635	0	15	620	0	0
AR501550	PCC PAVEMENT MILLING	SY	855	0	0	855	0	0
AR501604	4" PCC SIDEWALK	SF	1380	450	930	0	0	0
AR501690	PCC SIDEWALK REMOVAL	SF	1640	450	1190	0	0	0
AR501900	REMOVE PCC PAVEMENT	SY	2255	100	2155	0	0	0
AR602510	BITUMINOUS PRIME COAT	GAL	1450	280	1095	75	0	0
AR603510	BITUMINOUS TACK COAT	GAL	4135	575	385	3175	0	0
AR620510	PAVEMENT MARKING	SF	6245	1285	625	4335	0	0
AR620590	TEMPORARY MARKING	SF	720	720	0	0	0	0
AR620900	PAVEMENT MARKING REMOVAL	SF	140	0	0	140	0	0
AR800341	REMOVE CURB ISLAND	EA	90	0	0	90	0	0
AR801246	REMOVE FLAG POLE	EA	2	0	0	2	0	0
AR910120	ROADWAY LIGHT FIXTURE	EA	5	5	0	0	0	0
AR910905	REMOVE RDWY LGT POLE W/FXTR	EA	3	3	0	0	0	0
AR910960	RELOCATE ROADWAY LIGHT POLE	EA	4	4	0	0	0	0
AR910200	ROADWAY SIGN	EA	32	12	0	20	0	0
AR910230	HANDICAP SIGN	EA	8	0	0	8	0	0
AR910243	SIGN SUPPORT	EA	37	9	0	28	0	0
AR910915	REMOVE ROADWAY SIGN	EA	23	7	0	16	0	0
AR910975	RELOCATE ROADWAY SIGN	EA	12	0	0	12	0	0
AR910410	PARKING BLOCK	EA	45	0	0	45	0	0
AR800285	REMOVE PARKING BLOCK	EA	4	0	0	4	0	0
AR910430	TRAFFIC MAINTENANCE (ROADWAY)	LS	1	1	0	0	0	0
AR751940	ADJUST INLET	EA	7	0	1	6	0	0
AR751927	REPLACE FRAME & GRATE	EA	1	0	0	1	0	0
AR754212	CONCRETE CURB TYPE B	LF	250	0	250	0	0	0
AR754900	REMOVE CONCRETE CURB	LF	150	0	150	0	0	0
AR901510	SEEDING	AC	1	1	0	0	0	0
AR908510	MULCHING	AC	1	1	0	0	0	0
AR108506	2/C #6 600 V UG CABLE	LF	2560	2560	0	0	0	0
AR108756	1/C #6 GROUND	LF	2560	2560	0	0	0	0
AR110000	DIRECTIONAL BORE	LF	60	60	0	0	0	0
ADDITIVE ALTERNATE #1								
AS401610	BITUMINOUS SURFACE COURSE	TON	600	0	0	0	600	0
AS401650	BITUMINOUS PAVEMENT MILLING	SY	6775	0	0	0	6775	0
AS401655	BUTT JOINT CONSTRUCTION	SY	935	0	0	0	935	0
AS403620	BITUMINOUS BASE COURSE, LEVELING	TON	400	0	0	0	400	0
AS501604	4" PCC SIDEWALK	SF	1540	0	0	0	1540	0
AS501690	PCC SIDEWALK REMOVAL	SF	1540	0	0	0	1540	0
AS603510	BITUMINOUS TACK COAT	GAL	2035	0	0	0	2035	0
AS620510	PAVEMENT MARKING	SF	2120	0	0	0	2120	0
AS910200	ROADWAY SIGN	EA	5	0	0	0	5	0
AS910230	HANDICAP SIGN	EA	4	0	0	0	4	0
AS910243	SIGN SUPPORT	EA	5	0	0	0	5	0
AS910915	REMOVE ROADWAY SIGN	EA	1	0	0	0	1	0
AS800285	REMOVE PARKING BLOCK	EA	7	0	0	0	7	0
ADDITIVE ALTERNATE #2								
AT401610	BITUMINOUS SURFACE COURSE	TON	210	0	0	0	0	210
AT401650	BITUMINOUS PAVEMENT MILLING	SY	2395	0	0	0	0	2395
AT401655	BUTT JOINT CONSTRUCTION	SY	470	0	0	0	0	470
AT403620	BITUMINOUS BASE COURSE, LEVELING	TON	140	0	0	0	0	140
AT501604	4" PCC SIDEWALK	SF	375	0	0	0	0	375
AT501690	PCC SIDEWALK REMOVAL	SF	375	0	0	0	0	375
AT603510	BITUMINOUS TACK COAT	GAL	720	0	0	0	0	720
AT620510	PAVEMENT MARKING	SF	475	0	0	0	0	475
AT910200	ROADWAY SIGN	EA	4	0	0	0	0	4
AT910230	HANDICAP SIGN	EA	2	0	0	0	0	2
AT910243	SIGN SUPPORT	EA	4	0	0	0	0	4



FILE: SUM QUAN-GEN NOTES.dwg
 UPDATE BY: Dale Draughan
 PLOT DATE: 5/3/2013 12:20 PM

Coally
 CMI Tower Site TOPO

UN052

REVISIONS		
NUMBER	BY	DATE

0 1 2
 THIS BAR IS EQUAL TO 2"
 AT FULL SCALE (34X22).

UNIVERSITY OF ILLINOIS
 WILLARD AIRPORT
 SAVOY, ILLINOIS

RELOCATE ENTRANCE ROADWAY &
 REHABILITATE OLD TERMINAL PARKING LOT
 SUMMARY OF QUANTITIES &
 GENERAL NOTES

- GENERAL NOTES**
- IT IS THE CONTRACTOR'S RESPONSIBILITY TO ASCERTAIN EXISTING FIELD CONDITIONS BEFORE BIDDING ON THE PROJECT.
 - THE CONTRACTOR WILL BE REQUIRED TO COMPLY WITH STATE AND LOCAL REGULATIONS REGARDING AIR, WATER, AND NOISE POLLUTION.
 - ALL STREET RETURNS HAVE RADII DESIGNATED TO THE EDGE OF PAVEMENT AND FACE OF CURB UNLESS OTHERWISE NOTED ON THE PLANS.
 - THE EXCAVATION FOR THIS PROJECT IS CLASSIFIED AS EARTH EXCAVATION IN ACCORDANCE WITH ITEM 152 OF THE STANDARD SPECIFICATIONS FOR CONSTRUCTION OF AIRPORTS AND AS PROVIDED IN THE CONTRACT SPECIFICATIONS. THE EARTH EXCAVATION SHALL INCLUDE THE REMOVAL OF EARTH AND UNCLASSIFIED MATERIALS. THE CONTRACTOR SHALL NOTIFY ALL UTILITY COMPANIES AND AGENCIES PRIOR TO EXCAVATION OPERATIONS.
 - THE EXISTING TRAFFIC SIGNS AND POSTS WHICH INTERFERE WITH THE CONSTRUCTION SHALL BE REMOVED AND RESET, AS THE CASE MAY BE, AS DIRECTED BY THE RESIDENT ENGINEER. THIS WORK SHALL BE PERFORMED IN ACCORDANCE WITH ITEM 910200 OF THE STANDARD SPECIFICATIONS FOR CONSTRUCTIONS OF AIRPORTS. EXISTING SIGNS THAT WILL NOT BE RESET SHALL BE RETURNED TO THE AIRPORT.
 - NO ADDITIONAL COMPENSATION WILL BE ALLOWED FOR PAVEMENT REMOVAL ITEMS DUE TO VARIATIONS IN THE EXISTING PAVEMENT TYPE, THICKNESS, OR AMOUNT OF REINFORCEMENT.
 - ALL DISTURBED AREAS SHALL BE SEEDED OR AS SHOWN ON THE PLANS, AND SEEDING SHALL BE DONE AS SOON AS EACH STAGE IS COMPLETED AS DIRECTED BY THE AIRPORT. EXISTING TURF WHICH IS DAMAGED OUTSIDE THE LIMITS OF RIGHT-OF-WAY, EASEMENTS OR CONSTRUCTION SHALL BE REESTABLISHED WITH SEED AS DIRECTED BY THE RESIDENT ENGINEER AT THE CONTRACTORS EXPENSE.
 - UTILITY LOCATIONS SHOWN IN THE PLANS ARE APPROXIMATE. BEFORE COMMENCING CONSTRUCTION OPERATIONS THE CONTRACTOR SHALL OBTAIN FROM THE UTILITY PROVIDERS ANY AVAILABLE INFORMATION REGARDING THE POSITIONS OF UTILITIES WITHIN THE PROJECT LIMITS. IT SHALL BE THE RESPONSIBILITY OF THE CONTRACTOR TO DETERMINE THEIR EXACT LOCATION AT THE TIME OF CONSTRUCTION AND TO PROTECT SAME, THE CONTRACTOR SHALL ALSO BE RESPONSIBLE FOR AVOIDING CONFLICTS BETWEEN OVERHEAD UTILITY LINES AND THE EQUIPMENT USED DURING CONSTRUCTION.
 - ABANDONED UNDERGROUND UTILITIES THAT CONFLICT WITH CONSTRUCTION SHALL BE REMOVED AND DISPOSED OUTSIDE THE LIMITS OF THE RIGHT OF WAY. THIS WORK WILL NOT BE PAID FOR SEPARATELY BUT SHALL BE CONSIDERED INCLUDED IN THE COST OF THE VARIOUS REMOVAL PAY ITEMS, AND NO ADDITIONAL COMPENSATION WILL BE ALLOWED.
 - ALL SALVAGEABLE FRAMES AND GRATES WHICH ARE NOT INCORPORATED IN THE WORK SHALL BECOME THE PROPERTY OF THE CONTRACTOR. THE CONTRACTOR'S BID PRICE FOR VARIOUS STORM DRAINAGE WORK SHOULD REFLECT THE SALVAGE VALUE OF THE ITEMS.
 - THE CONTRACTOR SHALL PROVIDE AND INSTALL, AS A MINIMUM, TWO WEIGHTED SAND BAGS ON EACH TYPE II BARRICADE USED. (ONE WEIGHTED SAND BAG ACROSS EACH BOTTOM RAIL.)
 - FOR STABILIZATION, ALL TYPE III BARRICADES SHALL REQUIRE A MINIMUM OF FOUR WEIGHTED SAND BAGS PER BARRICADE.
 - THE CONTRACTOR SHALL NOTIFY THE AIRPORT OF ALL ROAD CLOSURES AND CHANGES IN THE TRAFFIC CONTROL PLANS A MINIMUM OF 48 HOURS IN ADVANCE OF THE WORK.
 - THE CONTRACTOR SHALL BE RESPONSIBLE FOR CLEANUP OF THE SITE PRIOR TO FINAL ACCEPTANCE. THIS WORK SHALL ALSO INCLUDE CLEANING ALL DRAINAGE FACILITIES OF FOREIGN MATERIALS IN ACCORDANCE WITH THE SPECIFICATIONS. THIS WORK SHALL BE DONE AS DIRECTED BY THE ENGINEER AND NO ADDITIONAL COMPENSATION WILL BE ALLOWED.

© Copyright CMT, Inc.

CMT
 CRAWFORD, MURPHY & TILLY, INC.
 CONSULTING ENGINEERS
 License No. 184-000613

DESIGN BY:	CBG
DRAWN BY:	CMT
CHECKED BY:	KLB
APPROVED BY:	CET
DATE:	4/19/2013
JOB No:	11059-05-00

IL PROJ. NO. CMI-4269

SHEET 02 OF 38 SHEETS

K:\Champaign\1105905\Draw\Sheets