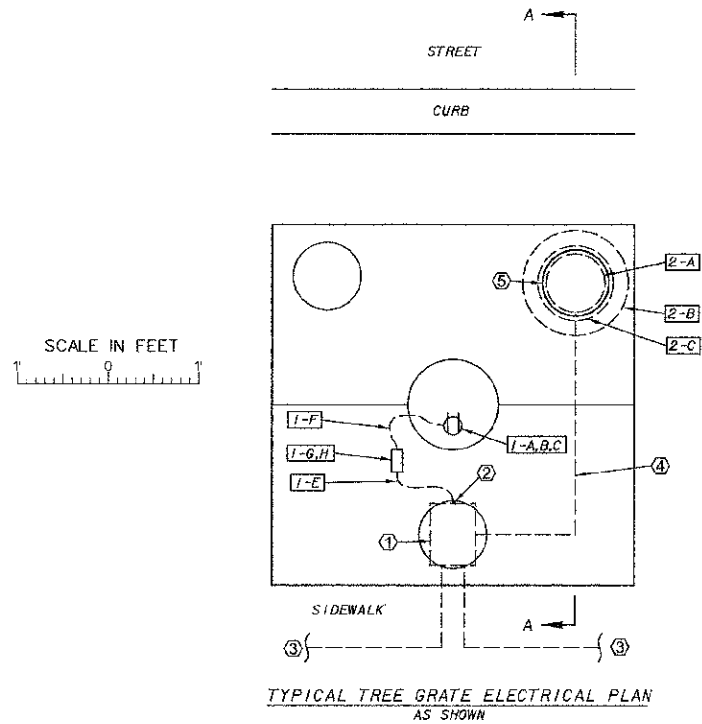


F.A.U. ROUTE	SECTION	COUNTY	TOTAL SHEETS	SHEET NUMBER
9521	10-00051-00-SW	PERRY	33	25
CITY OF DUQUOIN		PROJECT NO. TE-0009(105)		
CONTRACT NO. 99498		JOB NO. C-99-512-11		

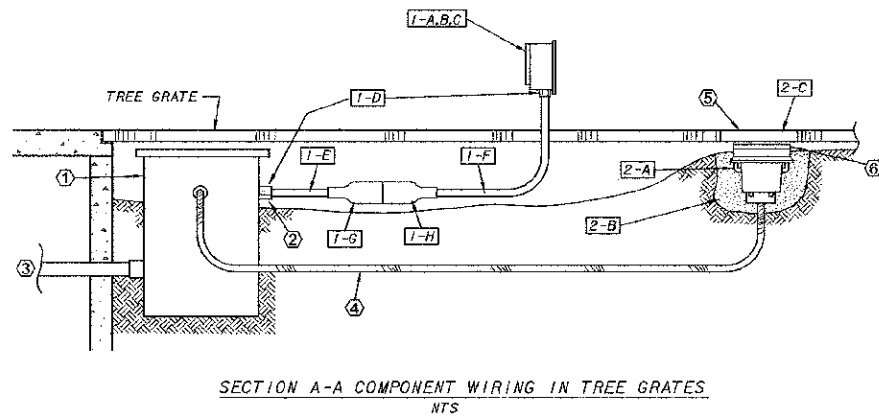


PAY ITEM FOR RECEPTACLES - BILL OF MATERIALS - (26 ASSEMBLIES REQUIRED)

MARK	QUAN	DESCRIPTION
1-A	1	CAST, DEEP, 1-GANG OUTLET BOX WITH ONE 3/4" THREADED OPENING - CROUSE HINDS, KILLARK, OR EQUAL.
1-B	1	IN-USE, WEATHERPROOF, LOCKABLE, VERTICAL GFCI DUPLEX RECEPTACLE COVER - CROUSE HINDS, KILLARK, OR EQUAL.
1-C	1	20 AMP, 120 VOLT, GFCI DUPLEX RECEPTACLE - HUBBELL #GFR5252MWA, OR EQUAL.
1-D	2	3/4" WEATHERPROOF, NON-METALLIC, PORTABLE CORD CONNECTOR.
1-E	3 FT	#14 GA, 3/CONDUCTOR, 600 VOLT, TYPE SOOW PORTABLE CORD.
1-F	6 FT	#14 GA, 3/CONDUCTOR, 600 VOLT, TYPE SOOW PORTABLE CORD.
1-G	1	20 AMP, 3-WIRE, 600 VOLT RATED, WATERPROOF FEMALE CONNECTOR WITH INTEGRAL WATERPROOF CAP - DURALINE #FTP-3, OR EQUAL.
1-H	1	20 AMP, 3-WIRE, 600 VOLT RATED, WATERPROOF MALE CONNECTOR WITH INTEGRAL WATERPROOF CAP - DURALINE #MTP-3, OR EQUAL.

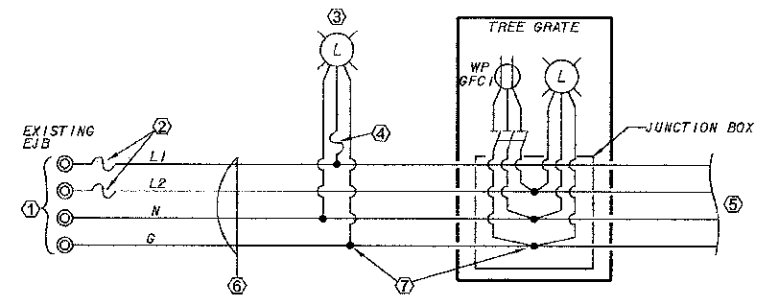
PAY ITEM FOR TREE FLOOD LIGHTS - BILL OF MATERIALS - (26 ASSEMBLIES REQUIRED)

MARK	QUAN	DESCRIPTION
2-A	1	120 VOLT LED IN-GROUND LIGHT FIXTURE.
2-B	1	FINE-GRADE ROCK BACKFILL
2-C	1	10 1/4" DIAMETER X 1/2" THICK CLEAR POLYCARBONATE COVER



TREE GRATE DETAIL NOTES

- 1 6" X 8" X 7" DEEP NON-METALLIC, SOLID-BOTTOM JUNCTION BOX RATED ANSI TIER 15, WITH 4-BOLT GASKETED COVER AND LOGO TO READ "ELECTRIC" - QUAZITE #PC0608DG06/PC0608CG00, OR EQUAL. CENTER BOX UNDER GRATE MEDALLION COVER.
- 2 CABLE INSTALLATION AND ENTRY INTO BOX SHALL BE MADE ABOVE THE FINAL GRADE ESTABLISHED WITHIN THE TREE GRATE AREA.
- 3 SEE SITE PLANS FOR WIRING DETAILS. SPLICES IN THIS BOX SHALL BE MADE WITH WATERPROOF CONNECTORS.
- 4 2 - #12, AND 1 - #12 EQUIPMENT GROUND IN 1/2" LIQUIDTIGHT FLEXIBLE NON-METALLIC CONDUIT TYPE LFNC. TERMINATE WITH APPROVED WATERTIGHT CONNECTORS.
- 5 REMOVE STEEL COVER AND REPLACE WITH CLEAR POLYCARBONATE COVER SEALED IN PLACE WITH HIGH-GRADE CLEAR SILICONE CAULK AROUND PERIMETER.
- 6 INSTALL IN-GRADE LIGHT FIXTURE TO FINISH LEVEL AND 1" BELOW BOTTOM OF TREE GRATE COVER. AIM 15 DEGREES TOWARD TREE TRUNK.



TYPICAL POST LIGHT / TREE GRATE SCHEMATIC
NOT TO SCALE

SCHEMATIC NOTES

- 1 REMOVE EXISTING LIGHT AND RECEPTACLE TAPS AND ANY FUSING PRESENT. CONNECT PROPOSED CONDUCTORS TO EXISTING FEEDERS WITH SAME PHASE DISTRIBUTION AS EXISTING.
- 2 IN-LINE, WATERPROOF, 250 VAC, 30 AMP FUSEHOLDER - ELASTIMOLD #65U, OR EQUAL. FUSE AT 10 AMPS WITH 250VAC, TIME DELAY FUSE - BUSSMAN #FNM10, OR EQUAL.
- 3 EXISTING POST LIGHT ASSEMBLY INSTALLED ON PROPOSED CONCRETE BASE.
- 4 IN-LINE, WATERPROOF, 250 VAC, 20 AMP FUSEHOLDER IN BASE OF EXISTING LIGHT POLE - BUSSMAN #HEB, OR EQUAL. FUSE AT 5 AMPS WITH 250VAC, TIME DELAY FUSE - BUSSMAN #FNM5, OR EQUAL.
- 5 TO ADDITIONAL LIGHTS OR TREE GRATES PER SITE PLANS.
- 6 #10 AWG IN 3/4" PVC. QUANTITY PER SITE PLANS.
- 7 TYPICAL; ALL SPLICES WATERPROOF.