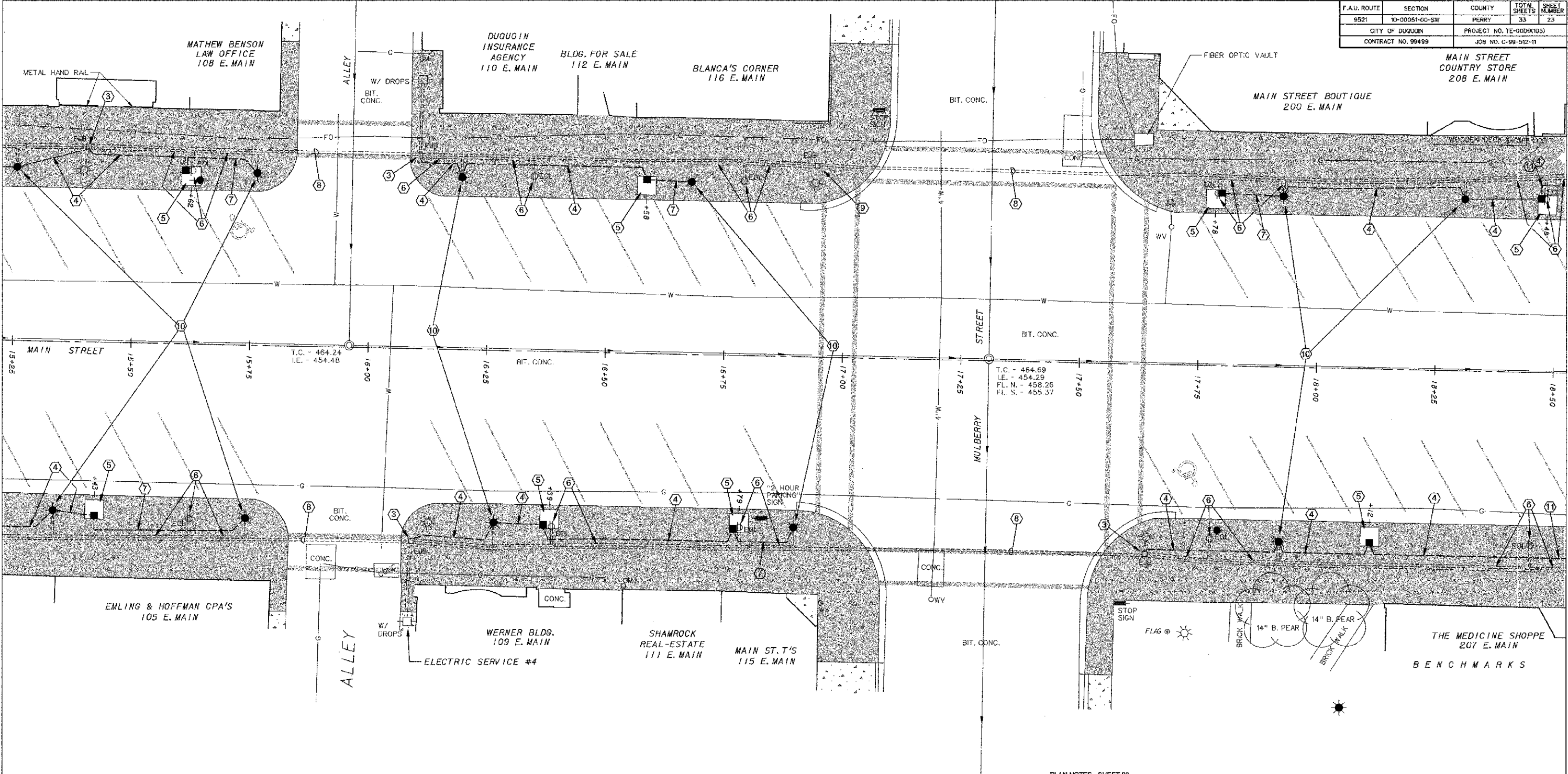


F.A.U. ROUTE	SECTION	COUNTY	TOTAL SHEETS	SHEET NUMBER
9521	10-00051-00-SW	PERRY	33	23
CITY OF DUQUOIN		PROJECT NO. TE-00091053		
CONTRACT NO. 99499		JOB NO. C-99-512-11		

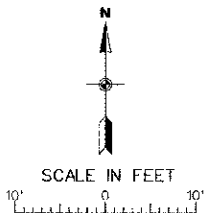


LEGEND

- | | | | | | |
|--|---|--|------------------------------|--|--------------------------------|
| | - POWER POLE | | - SANITARY SEWER AND MANHOLE | | - FIBER OPTIC LINE |
| | - POWER / TELEPHONE POLE | | - CLEAN OUT | | - UNDERGROUND TELEPHONE LINE |
| | - POWER / TELEPHONE POLE W/ LIGHT | | - FIRE HYDRANT | | - POST |
| | - STREET LIGHT POLE | | - WATER VALVE | | - SIGN |
| | - SINGLE / DOUBLE FIXTURE PEDESTRIAN LIGHT - 70W, HSP | | - WATER METER | | - ORNAMENTAL CONTAINER |
| | - EXISTING ELECTRICAL JUNCTION BOX | | - WATER SERVICE SHUTOFF | | - ORNAMENTAL SHRUB |
| | - PROPOSED ELECTRICAL JUNCTION BOX | | - WATER MAIN & SIZE | | - TREE W/ SIZE & TYPE |
| | - EXISTING ELECTRICAL OUTLET | | - GAS LINE | | - TOP OF CASTING - TOP OF CURB |
| | - EXISTING ELECTRICAL CONDUIT | | - GAS VALVE | | - INVERT |
| | - PROPOSED ELECTRICAL CIRCUIT | | - GAS METER | | - FLOW LINE |
| | - OVERHEAD ELECTRIC LINE | | - STORM SEWER & MANHOLE | | - EXISTING CONCRETE SIDEWALK |
| | - ANCHOR | | - STORM SEWER & INLET | | - PROPOSED PCC SIDEWALK |
| | - TRAFFIC CONTROL LIGHT | | | | |
| | - RAILROAD CROSSING GATE | | | | |

PLAN NOTES - SHEET 23

- REMOVE EXISTING WIRING AND ABOVE-GRADE PORTION OF EXISTING RECEPTACLE CONDUIT. ABANDON UNDERGROUND PORTION IN PLACE.
- 2 - #10, AND 1 - #10 EQUIPMENT GROUND IN 3/4" PVC TO PROPOSED TREE GRATE JUNCTION BOX. SEE SHEET 22 FOR CONTINUATION.
- TYPICAL EXISTING ELECTRIC JUNCTION BOX (EJB) TO REMAIN. DISCONNECT AND REMOVE EXISTING WIRING AS NOTED TO EXISTING POST LIGHTS AND RECEPTACLES. PROVIDE NEW WIRING TAPPED TO THE EXISTING FEEDERS IN THE EJB, WITH WATERPROOF SPLICES. SEE TYPICAL SCHEMATIC, SHEET 25.
- 3 - #10 (TWO 120V CIRCUITS), AND 1 - #10 EQUIPMENT GROUND IN 3/4" PVC.
- SEE DETAIL SHEET 25 FOR PROPOSED WIRING IN TREE GRATES.
- REMOVE EXISTING WIRING AND ABOVE-GRADE PORTION OF EXISTING RECEPTACLE AND POST LIGHT CONDUIT. ABANDON UNDERGROUND PORTION IN PLACE.
- 2 - #10, AND 1 - #10 EQUIPMENT GROUND IN 3/4" PVC.
- EXISTING 2 - 2" PVC AND WIRING TO REMAIN. LOCATE AND AVOID DAMAGE TO SAME.
- TYPICAL EXISTING ELECTRIC JUNCTION BOX (EJB) TO REMAIN. DISCONNECT AND REMOVE EXISTING WIRING AS NOTED TO EXISTING POST LIGHTS AND RECEPTACLES. TAPE AND SEAL FEEDER CONDUCTORS WHERE TAPS ARE REMOVED.
- REMOVE EXISTING POST LIGHT ASSEMBLY AND REINSTALL ON PROPOSED CONCRETE BASE PER DETAIL, SHEET 3. PROVIDE FUSING FOR LIGHT FEED PER SCHEMATIC, SHEET 25.
- SEE SHEET 24 FOR CONTINUATION.



CITY OF DUQUOIN
PERRY COUNTY, ILLINOIS
MAIN STREET SIDEWALK REPLACEMENT
PROPOSED ELECTRICAL PLAN
STA. 15+25 TO STA. 18+50