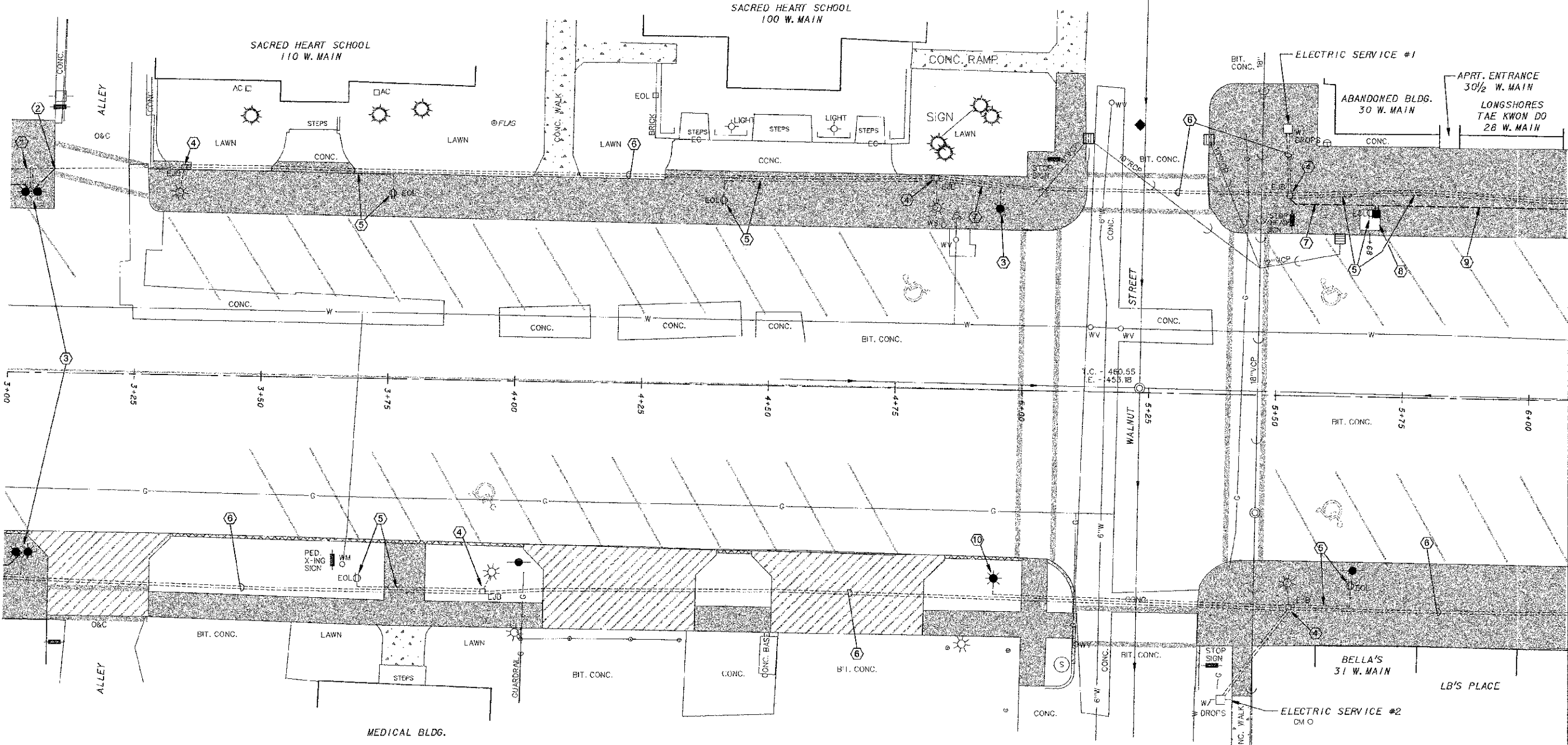


F.A.J. ROUTE	SECTION	COUNTY	TOTAL SHEETS	SHEET NUMBER
9521	10-00051-00-SW	PERRY	33	19
CITY OF DUQUOIN		PROJECT NO. TE-0009(105)		
CONTRACT NO. 99499		JOB NO. C-99-512-11		



LEGEND

- | | | |
|--|--|--|
| <ul style="list-style-type: none"> POWER POLE POWER / TELEPHONE POLE POWER / TELEPHONE POLE W/ LIGHT STREET LIGHT POLE SINGLE / DOUBLE FIXTURE PEDESTRIAN LIGHT - 70W, HSP EXISTING ELECTRICAL JUNCTION BOX PROPOSED ELECTRICAL JUNCTION BOX EXISTING ELECTRICAL OUTLET EXISTING ELECTRICAL CONDUIT PROPOSED ELECTRICAL CIRCUIT OVERHEAD ELECTRICAL LINE ANCHOR TRAFFIC CONTROL LIGHT RAILROAD CROSSING GATE | <ul style="list-style-type: none"> SANITARY SEWER AND MANHOLE C.O.O. - CLEAN OUT FIRE HYDRANT W.V. - WATER VALVE W.M. - WATER METER W.S.O. - WATER SERVICE SHUTOFF 6" W - WATER MAIN & SIZE G - GAS LINE GV - GAS VALVE GM - GAS METER STORM SEWER & MANHOLE STORM SEWER & INLET | <ul style="list-style-type: none"> FC - FIBER OPTIC LINE UT - UNDERGROUND TELEPHONE LINE POST SIGN ORNAMENTAL CONTAINER ORNAMENTAL SHRUB TREE W/ SIZE & TYPE TC - TOP OF CASTING - TOP OF CURB INV. - INVERT FL - FLOW LINE EXISTING CONCRETE SIDEWALK PROPOSED PCC SIDEWALK |
|--|--|--|

PLAN NOTES - SHEET 19

- REMOVE EXISTING WIRING AND ABOVE-GRADE PORTION OF EXISTING RECEPTACLE CONDUIT. ABANDON UNDERGROUND PORTION IN PLACE. SEE SHEET 18 FOR CONTINUATION.
- REMOVE EXISTING WIRING. LOCATE, AND INTERCEPT EXISTING 3/4" PVC AT ALLEY EDGE. EXTEND PROPOSED CONDUIT FROM THIS POINT TO THE POST LIGHT. REMOVE EXISTING CONDUCTORS AND REPLACE WITH 3 - #10 (TWO 120 VOLT CIRCUITS PLUS NEUTRAL), AND 1 - #10 EQUIPMENT GROUND IN 3/4" PVC TO EJB.
- REMOVE EXISTING POST LIGHT ASSEMBLY AND REINSTALL ON PROPOSED CONCRETE BASE PER DETAIL SHEET 3. PROVIDE FUSING FOR LIGHT FEED PER SCHEMATIC, SHEET 25.
- TYPICAL EXISTING ELECTRIC JUNCTION BOX (EJB) TO REMAIN. DISCONNECT AND REMOVE EXISTING WIRING AS NOTED TO EXISTING POST LIGHTS AND RECEPTACLES. PROVIDE NEW WIRING TAPPED TO THE EXISTING FEEDERS IN THE EJB, WITH WATERPROOF SPLICES. SEE TYPICAL SCHEMATIC, SHEET 25.
- REMOVE EXISTING WIRING AND ABOVE-GRADE PORTION OF EXISTING RECEPTACLE OR POST LIGHT CONDUIT. ABANDON UNDERGROUND PORTION IN PLACE.
- EXISTING 2 - 2" PVC AND WIRING TO REMAIN; LOCATE AND AVOID DAMAGE TO SAME.
- 2 - #10, AND 1 - #10 EQUIPMENT GROUND IN 3/4" PVC.
- SEE DETAIL SHEET 25 FOR PROPOSED WIRING IN TREE GRATES.
- 3 - #10 (TWO 120 VOLT CIRCUITS PLUS NEUTRAL), AND 1 - #10 EQUIPMENT GROUND IN 3/4" PVC TO EJB. SEE SHEET 20 FOR CONTINUATION.
- POST LIGHT TO REMAIN - NO WORK.

CITY OF DUQUOIN
PERRY COUNTY, ILLINOIS
MAIN STREET SIDEWALK REPLACEMENT
PROPOSED ELECTRICAL PLAN
STA. 3+00 TO STA. 6+00