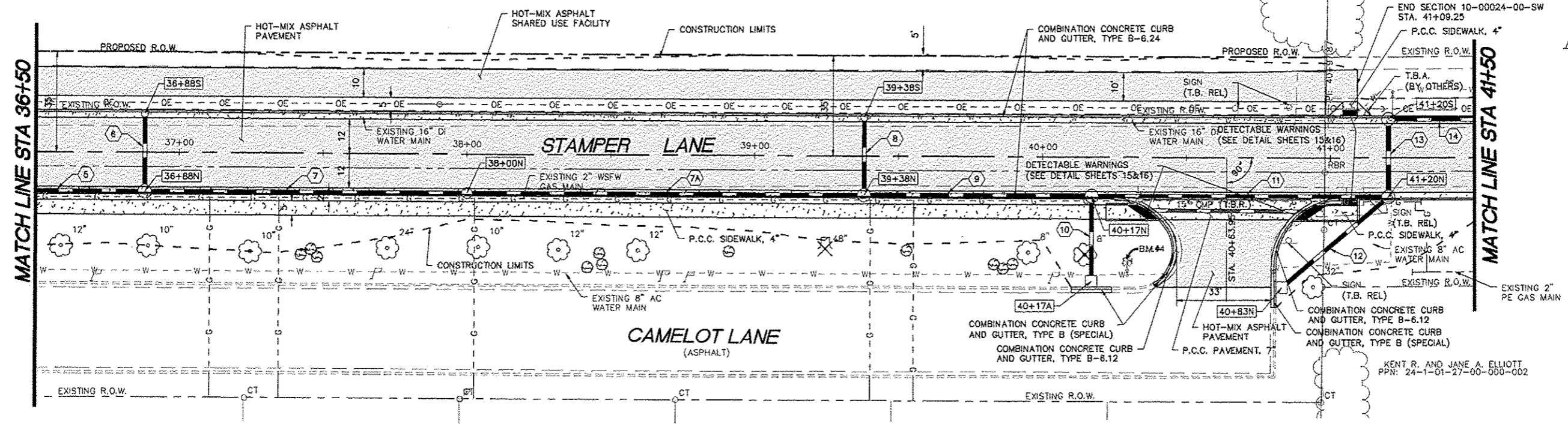




CONTRACT 97528

VILLAGE OF GODFREY  
PPN: 24-1-01-27-00-000-004

VILLAGE OF GODFREY  
PPN: 24-1-01-27-00-000-005



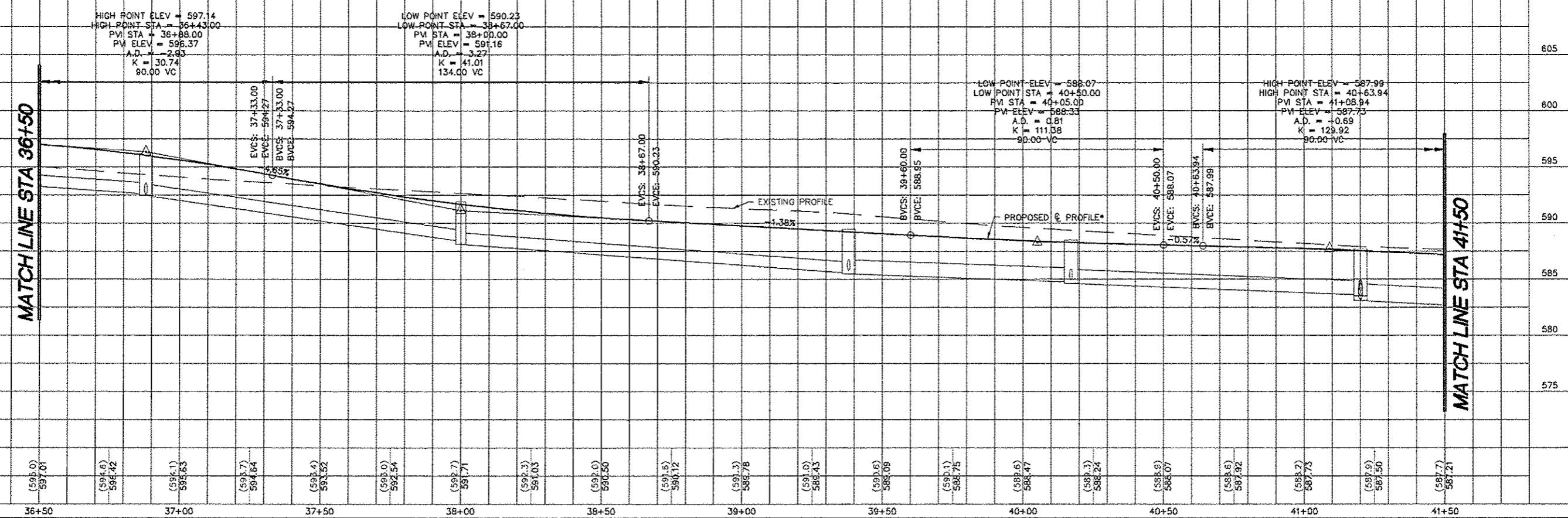
\*UNLESS OTHERWISE NOTED @ PROFILE OF SHARED-USE PATH IS 0.35 FT ABOVE PROPOSED ROADWAY AND FUTURE STAMPER LANE @ PROFILE.

REVISIONS

Sheppard, Morgan & Schwaab, Inc.  
CONSULTING ENGINEERS AND LAND SURVEYORS

**SMS ENGINEERS**

215 Marks Street, P.O. Box E, Alton, IL 62002 618-462-9755 Email: sm@smsengineers.com  
70 Central Industrial Drive, Suite 2, Granite City, IL 62041 618-977-5100 Email: tom@smsengineers.com  
DESIGN FIRM # 184-000892



STAMPER LANE - GODFREY, ILLINOIS  
FAU ROUTE 8950  
10-00022-01-PV  
10-00024-00-SW  
PLAN AND PROFILE

DWG. NO.  
PROJECT: STAMPER LANE AND FAU ROUTE 8950  
REF. BK. PG.  
JOB NO. 438439  
DSN. BY: SUW  
OWN. BY: BCS  
CHK. BY: SUW  
DATE: MARCH, 2013  
SCALE: HORT: 1"=20'  
VERT: 1"=5'  
SHEET 9 OF 50