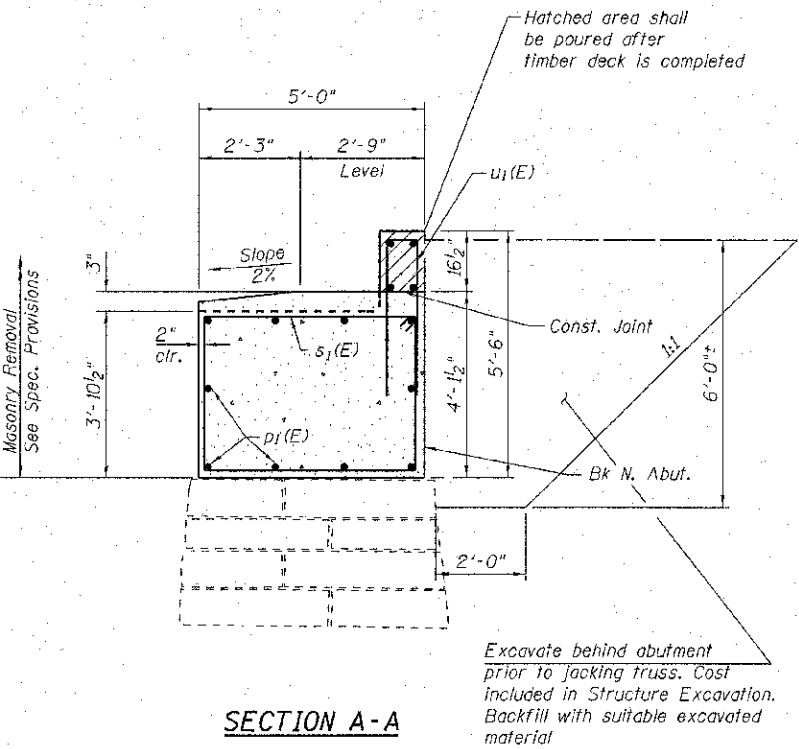
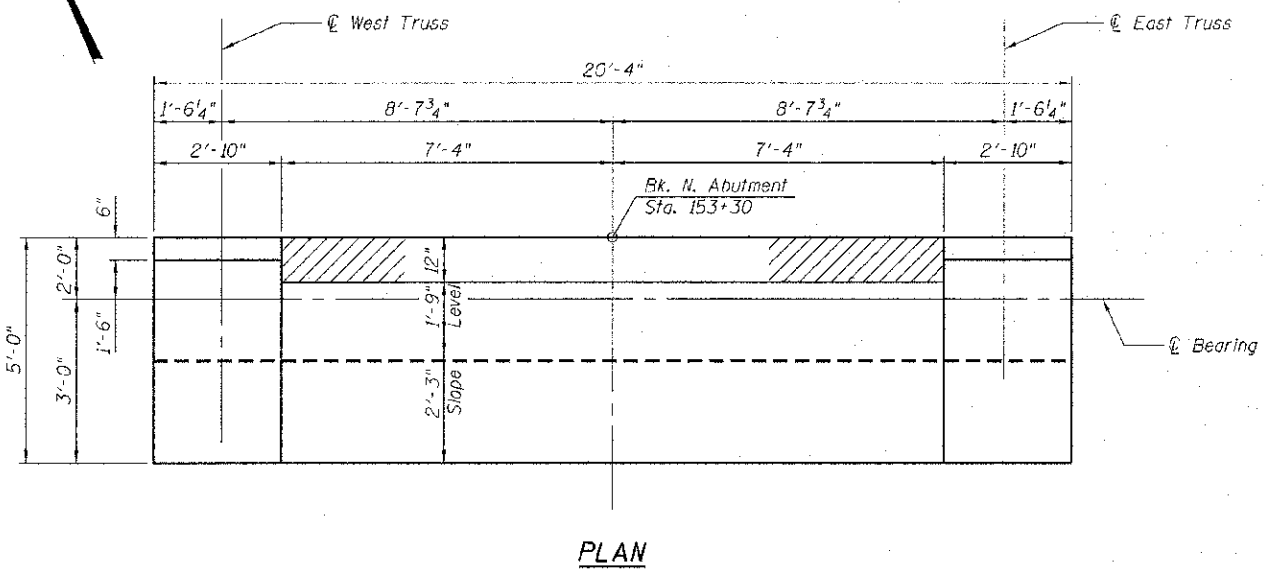
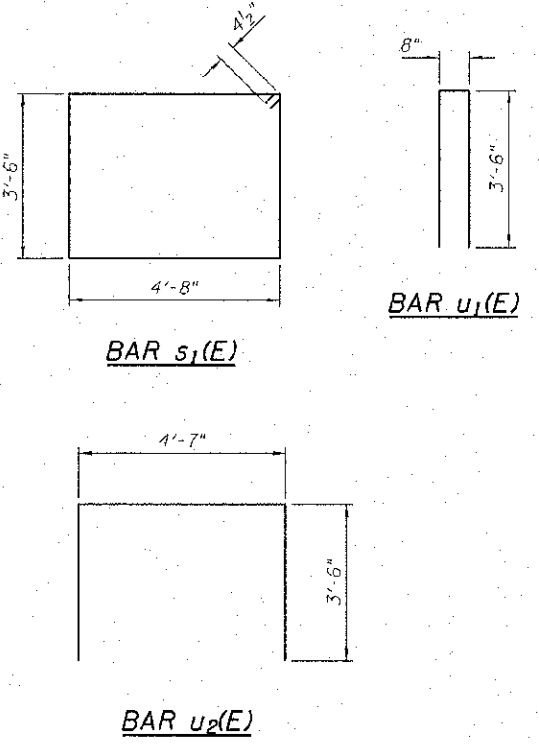


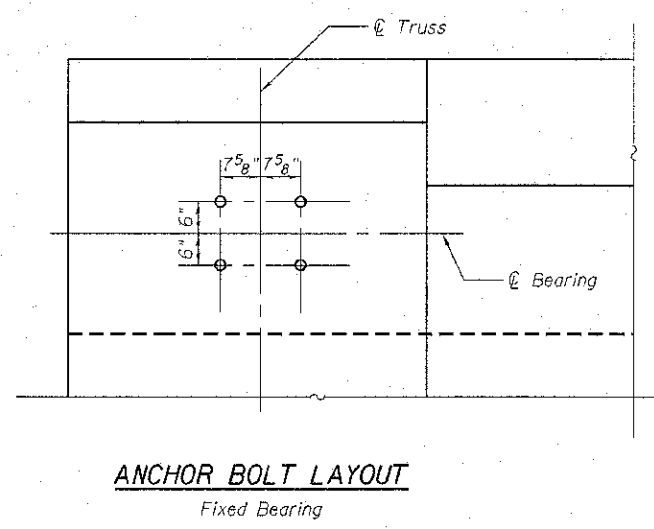
**ELEVATION**  
(Looking North)



**SECTION A-A**



**PLAN**



**ANCHOR BOLT LAYOUT**  
Fixed Bearing

**BILL OF MATERIAL**

Bar	No.	Size	Length	Shape
h1(E)	4	#5	14'-0"	—
h2(E)	4	#5	6'-0"	—
p1(E)	10	#7	20'-0"	—
s1(E)	21	#4	17'-5"	□
u1(E)	15	#4	7'-8"	□
u2(E)	10	#6	11'-7"	□
v(E)	6	#5	4'-3"	—
Structure Excavation			Cu. Yd.	28
Concrete Structures			Cu. Yd.	16.6
Reinforcement Bars, Epoxy Coated			Pound	1,010
Masonry Removal			Cu. Yd.	41
Masonry Cleaning & Tuckpointing			Sq. Yd.	44.5

FILE NAME = E:\Projects\2012\JOBS\12-96-510611.MIG Newden Blue Path\CD\CADD Sheets\0403084-xxxx-012-Nor-04-Abutment.dwg  
 MODEL DRIVER = PLOT.DRV  
 PLOT DATE = 4/11/2013



USER NAME = kshapiro	DESIGNED -	REVISED
FILE NAME = 0403084-xxxx-012-Nor-04-Abutment	CHECKED -	REVISED
PLOT SCALE = 200.0000 1" = 10'	DRAWN -	REVISED
PLOT DATE = 4/11/2013	CHECKED -	REVISED

STATE OF ILLINOIS  
DEPARTMENT OF TRANSPORTATION

NORTH ABUTMENT DETAILS  
STRUCTURE NO. 040-3084  
SHEET NO. 12 OF 16 SHEETS

TR	SECTION	COUNTY	TOTAL SHEETS	SHEET NO.
164	10-00045-00-BT	JASPER	76	27
CONTRACT NO.			ILLINOIS FED. AID PROJECT	