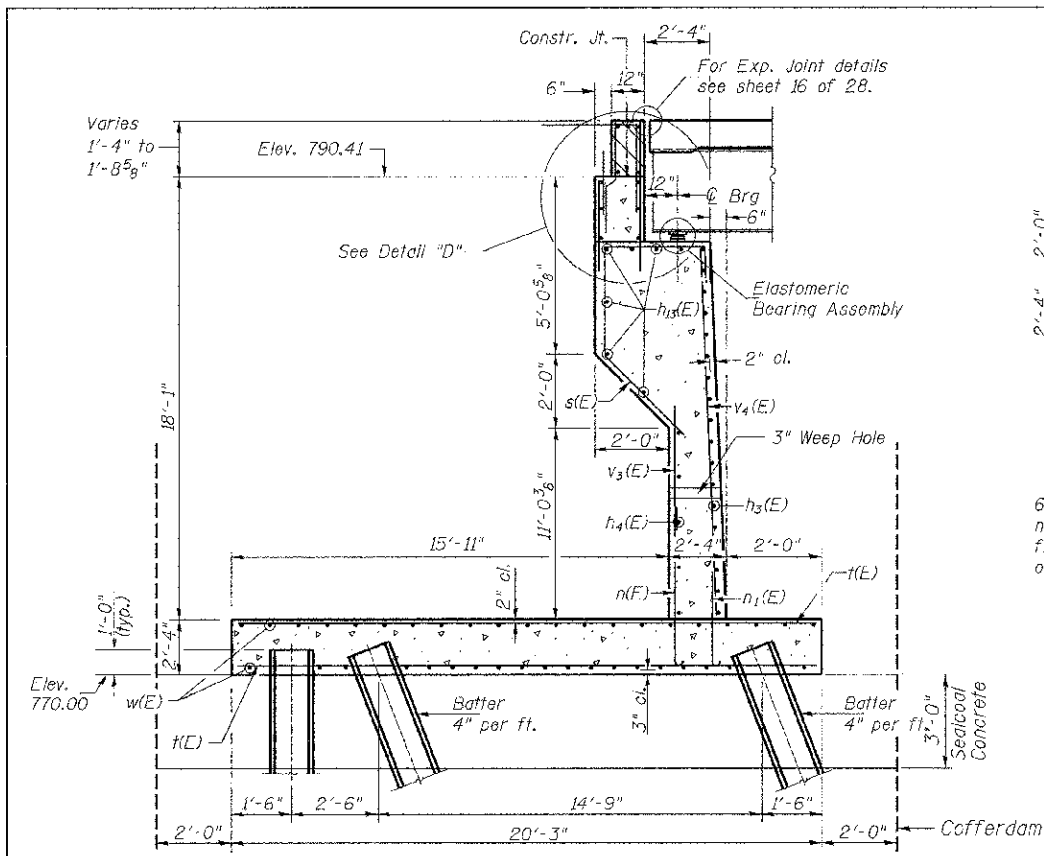


**SOUTH ABUTMENT
BILL OF MATERIAL**

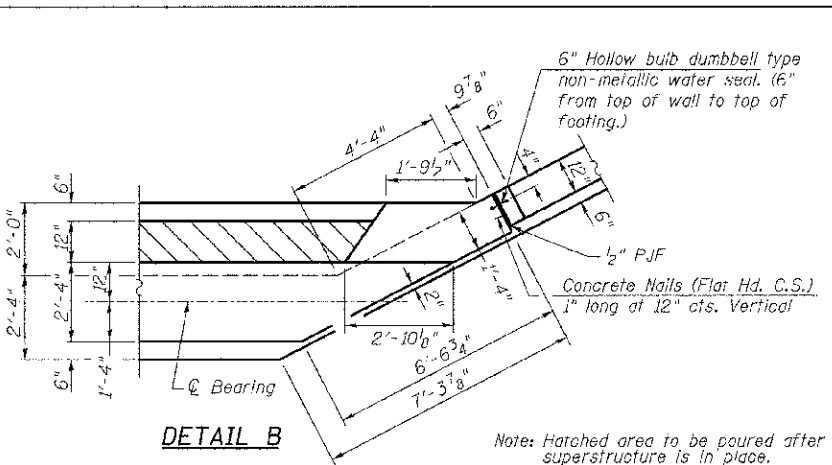
BAR	NO.	SIZE	LENGTH	SHAPE
h(E)	7	#4	2'-9"	—
h ₁ (E)	7	#4	5'-0"	—
h ₂ (E)	3	#4	3'-0"	—
h ₃ (E)	34	#5	23'-2"	—
h ₄ (E)	14	#4	23'-2"	—
h ₅ (E)	2	#4	7'-7"	—
h ₆ (E)	24	#4	5'-1"	—
h ₇ (E)	24	#4	5'-7"	—
h ₈ (E)	17	#4	3'-11"	—
h ₉ (E)	17	#4	6'-4"	—
h ₁₀ (E)	3	#4	3'-6"	—
h ₁₁ (E)	12	#4	26'-2"	—
h ₁₂ (E)	10	#6	23'-8"	—
h ₁₃ (E)	16	#4	26'-11"	—
h ₁₄ (E)	33	#4	16'-2"	—
h ₁₅ (E)	34	#4	32'-8"	—
h ₁₆ (E)	5	#4	6'-4"	—
h ₁₇ (E)	5	#4	6'-1"	—
h ₁₈ (E)	2	#4	5'-10"	—
h ₁₉ (E)	2	#4	5'-1"	—
n(E)	66	#8	9'-10"	—
n ₁ (E)	45	#4	5'-2"	—
n ₂ (E)	92	#9	11'-7"	—
s(E)	49	#6	11'-7"	—
k(E)	107	#8	19'-11"	—
t ₁ (E)	174	#7	17'-5"	—
u(E)	1	#5	7'-9"	—
u ₁ (E)	9	#4	4'-8"	—
v(E)	15	#6	27'-1"	—
v ₁ (E)	5	#4	19'-5"	—
v ₂ (E)	11	#6	15'-6"	—
v ₃ (E)	55	#8	13'-6"	—
v ₄ (E)	58	#4	15'-6"	—
v ₅ (E)	31	#6	28'-3"	—
v ₆ (E)	8	#4	19'-7"	—
v ₈ (E)	45	#5	4'-8"	—
v ₉ (E)	45	#5	3'-5"	—
v ₁₀ (E)	45	#5	2'-6"	—
v ₁₁ (E)	45	#5	5'-11"	—
w(E)	84	#5	23'-5"	—
w ₁ (E)	36	#5	22'-3"	—
w ₂ (E)	72	#5	21'-11"	—
w ₄ (E)	2	#5	5'-0"	—
w ₅ (E)	2	#5	5'-0"	—
Concrete Structures	CU YD		269.4	
Reinforcement Bars, Epoxy Coated	POUND		31,890	
Cofferdam Excavation	CU YD		1,495	
Cofferdam (Type 2) (Location 2)	EACH		1	
Furnishing Steel Piles HP10x42	FOOT		2,030	
Driving Steel Piles	FOOT		2,030	
Test Pile Steel HP10x42	EACH		1	
Pile Shoes	EACH		59	
Concrete Sealer	SQ FT		243	
Seal Coat Concrete	CU YD		244	

① See Special Provisions

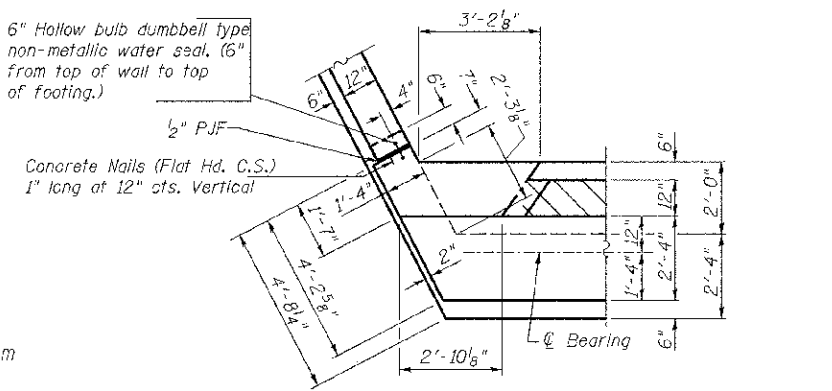
RTE. NO.	SECTION	COUNTY	TOTAL SHEETS	SHEET NO.
CH 26	05-00044-01-BR	DE KALB	49	40
CONTRACT NO. 87477				
ILLINOIS FED. AID PROJECT BR5-1122108				



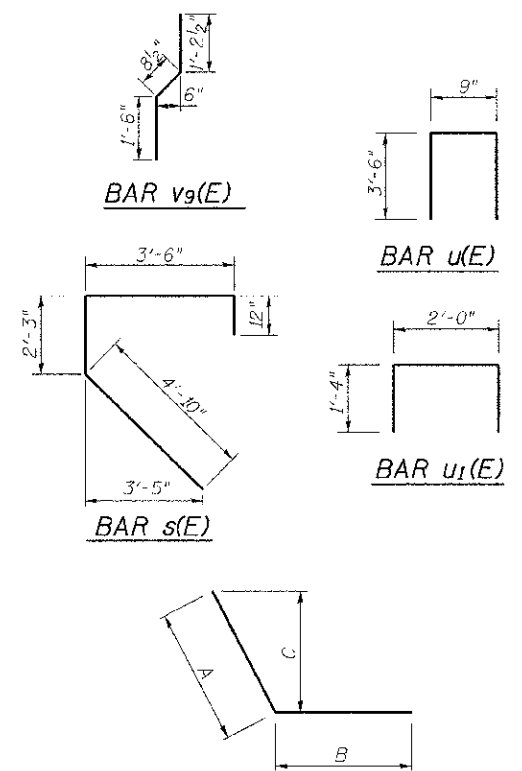
SECTION A-A
(Horizontal dimensions are at right angles to abutment)



DETAIL B

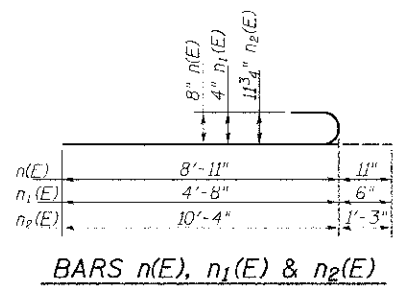


DETAIL A

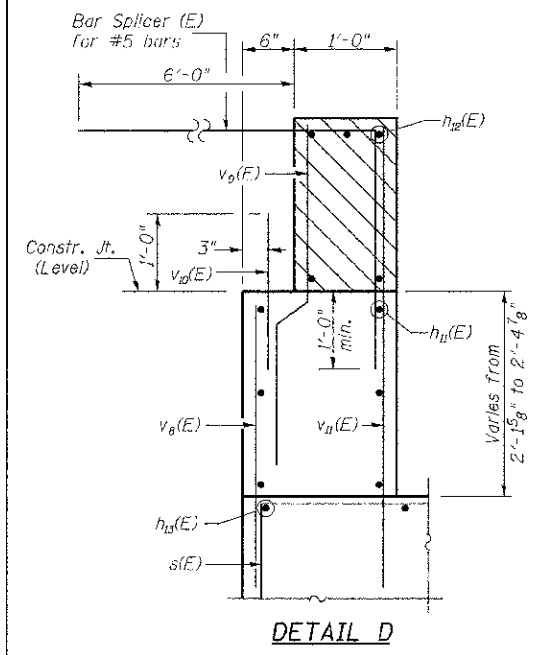


BAR	A	B	C
h ₂ (E)	6"	2'-6"	5 3/8"
h ₆ (E)	2'-10"	2'-3"	2'-6"
h ₇ (E)	3'-4"	2'-3"	1'-5 1/2"
h ₁₀ (E)	8"	2'-10"	3 3/4"
h ₁₆ (E)	1'-3"	5'-1"	1'-2"
h ₁₇ (E)	1'-3"	4'-10"	1"
h ₁₈ (E)	1'-1"	4'-9"	11 1/2"
h ₁₉ (E)	1'-9"	3'-4"	9 1/2"
w ₄ (E)	2'-6"	2'-6"	2'-2 3/4"
w ₅ (E)	2'-6"	2'-6"	1'-2"

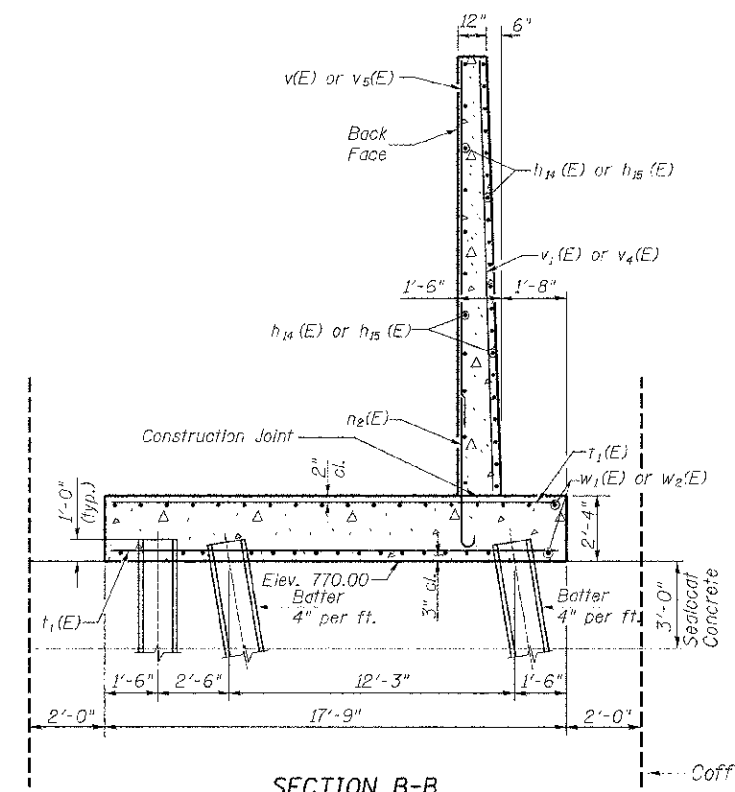
**BARS h₂(E), h₆(E), h₇(E),
h₁₀(E), h₁₆(E), h₁₇(E), h₁₈(E),
h₁₉(E), w₄(E) & w₅(E)**



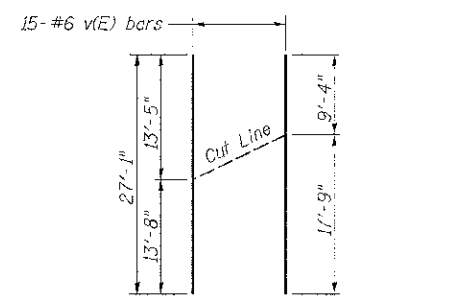
BARS n(E), n₁(E) & n₂(E)



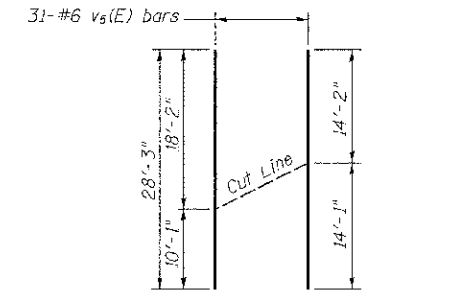
DETAIL D



SECTION B-B



v(E) BAR CUTTING DIAGRAM
Order v(E) bars full length. Cut as shown and use remainder of bars in wingwall.



v₅(E) BAR CUTTING DIAGRAM
Order v₅(E) bars full length. Cut as shown and use remainder of bars in wingwall.

FILE NAME =	USER NAME = amount1	DESIGNED BAN	REVISED -
VA2555\CADD SHEFTS\STRUCTURES - Rev'd	02-27-2013\2555-025.dgn	DRAWN TAC	REVISED -
	PLOT SCALE = NONE	CHECKED CTM	REVISED -
	PLOT DATE = 3/26/2013	DATE -	REVISED -

**DEKALB COUNTY
C.H. 26 (FIVE POINTS RD.)
OVER SOUTH BRANCH OF KISHWAUKEE RIVER**

NORTH ABUTMENT DETAILS
SCALE: N/A SHEET NO. 25 OF 28 SHEETS STA. N/A TO STA. N/A