

**INDEX OF SHEETS**

DESCRIPTION	SHEET NO
Title Sheet	1
General Note, Summary of Quantities,	2
Typical Sections	3
Veterans Parkway - Sta 100+00 to Sta 112+00	4
Veterans Parkway - Sta 112+00 to Sta 124+00	5
Veterans Parkway - Sta 124+00 to Sta 133+14	6
Traffic Control - Detour Route	7

**STANDARDS**

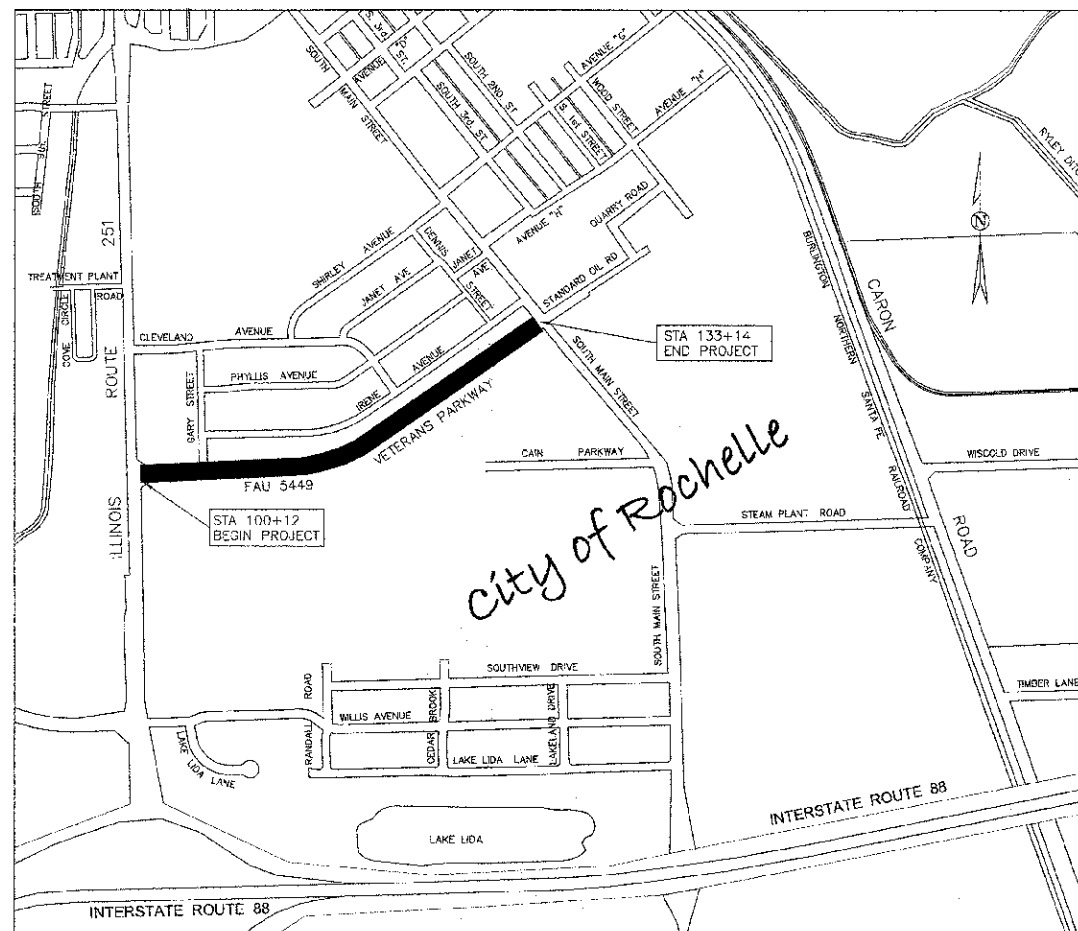
NUMBER	TITLE
280001-07	Temporary Erosion Control Systems
420701-02	Pavement Fabric
542301-03	Precast Reinforced Concrete Flared End Section
606001-05	Concrete Curb Type B and Combination Concrete Curb and Gutter
606306-03	Corrugated PC Concrete Medians
701006-04	Off-Rd Operations, 2L, 2W, 15'(4.5 m) to 24" (600 mm) from Pavement Edge
701201-04	Lane Closure, 2L, 2W, Day Only for Speeds ≥ 45 MPH
701301-04	Lane Closure, 2L, 2W, Short Time Operations
701306-03	Lane Closure, 2L, 2W, Slow Moving Operations Day Only, for Speeds ≥ 45 MPH
701311-03	Lane Closure, 2L, 2W Moving Operations - Day Only
701701-08	Urban Lane Closure, Multilane Intersection
701901-02	Traffic Control Devices
720011-01	Metal Post for Signs, Markers & Delineators
728001-01	Telescoping Steel Sign Support
729001-01	Application of Types A & B Post
780001-03	Typical Pavement Markings
BLR 21-9	Typical Application of Traffic Control Devices for Construction on Rural Highways



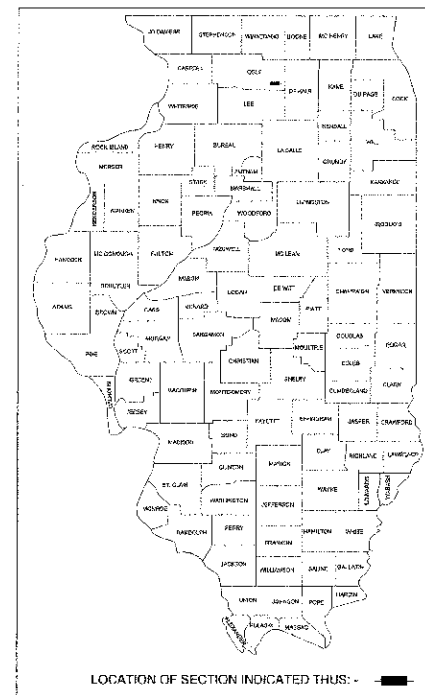
Full sized plans have been prepared using standard engineering scales. Reduced sized plans will not conform to standard scales. In making measurements on reduced plans, the above scale may be used

**STATE OF ILLINOIS  
DEPARTMENT OF TRANSPORTATION  
DIVISION OF HIGHWAYS  
PROPOSED  
HIGHWAY PLANS**

**STREET RESURFACING PROJECT  
FAU 5449 (VETERANS PARKWAY) - IL RT 251 TO S. MAIN ST.  
SECTION: 11-00111-00-RS  
PROJECT: M-5061(015)  
JOB NO: C-92-112-12  
CITY OF ROCHELLE  
OGLE COUNTY  
CONTRACT NO: 85582**



**Location Map**  
Not to Scale



**PRINTED BY AUTHORITY  
OF THE STATE OF ILLINOIS**

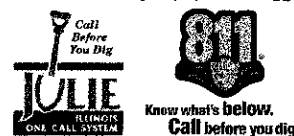
I, SAMUEL C. TESREAU, A FULLY REGISTERED PROFESSIONAL ENGINEER UNDER THE LAWS OF THE STATE OF ILLINOIS, HEREBY CERTIFY THAT THIS PLAN, SPECIFICATION OR REPORT WAS PREPARED BY MYSELF OR UNDER MY DIRECT SUPERVISION

Signed: *Samuel C. Tesreau*  
SAMUEL C. TESREAU, P.E.  
CITY ENGINEER  
LICENSE EXPIRES 11/30/2013

Date: 4/12/2013

AGENCY RESPONSIBLE FOR LETTING	
Approved	<i>April 12</i> , 2013 <i>David L. Hanson</i> City Manager, City of Rochelle
Passed	<i>April 16</i> , 2013 <i>Paul J. Johnson</i> District 2 Engineer of Local Roads
Released for Bid Based on Limited Review	<i>April 16</i> , 2013 <i>Paul A. Loebman</i> Deputy Director of Highways Region 2 Engineer

**CALL BEFORE YOU DIG**  
CALL 811 or 1-800-892-0123  
48 hours/2 working days prior to digging.



**VETERANS PARKWAY:**  
ADT = 2700 (2012) 10% TRUCKS  
URBAN MINOR ARTERIAL  
LAFO POLICY

Gross Length of Improvements = 3302 Feet or 0.63 Miles  
Net Length of Improvements = 3302 Feet or 0.63 Miles

**City of Rochelle  
Engineering Department**  
417 N. 6th St. Rochelle, IL 61068

**GENERAL NOTES:**

Specifications for this project shall be IDOT "Standard Specifications for Road and Bridge Construction", latest edition, IDOT "Recurring Special Provisions", latest edition, and City of Rochelle Special Provisions unless otherwise approved by the Engineer. All reference to "Engineer" shall mean the City Engineer or his authorized representative.

Any construction or work indicated in the plans or specified in the proposal shall be completed by the Contractor. Any construction or work not included in a pay item shall be incidental to the project contract cost. quantities shown are estimates and for information only. The contractor shall verify all quantities.

Call J.U.L.I.E. (1-800-892-0123) for utility location information prior to excavation. The location for existing utilities as shown on the plans are approximate and based on best information available, but not guaranteed. It shall be the Contractor's responsibility to ascertain their exact location from the utility companies and by field inspection. The contractor shall verify all underground utility locations in the field. The Contractor shall be responsible for "potholing" or locating utilities both vertical and horizontal, within the project limits or along any sewer trench, before installation of any proposed improvements to determine if conflicts exist with said improvements. The contractor shall be responsible for contacting the utility company for any adjustments. This item shall be considered incidental to the project contract.

Protect all overhead and underground utility lines during construction. All Electric, Utility pole or street light, Water, and Sanitary Sewer adjustments and/or relocations will be performed by Rochelle Municipal Utilities unless otherwise directed by the Engineer.

Right-of-way line and property lines indicated on the plans are approximate. The contractor shall carefully preserve all existing property markers until an authorized surveyor has referenced their location. Property markers damaged by the contractor shall be replaced at the expense of the contractor. All property corner monumentation shall be restored to the condition existing before construction began.

Top of curb (TOC) elevations indicated on the plans are to the top back of curb.

**EARTHWORK, TRENCHBACKFILL, SUBGRADE AND PAVEMENT PREPARATION NOTES:**

All excess earth excavation or unsuitable material shall be disposed of by the contractor off-site in accordance with IDOT requirements. This item shall be considered incidental to applicable pay items.

The upper 12 inches of subgrade below pavements, or new fills shall be brought to within ±2% of optimum moisture and compacted to not less than 90% of maximum density. Optimum moisture is estimated to be in the range of 8% to 9% during cool or wet seasons, therefore it may be necessary to disk and aerate the existing upper 12 inches of soil to achieve optimum moisture content.

No fill or backfill material shall be placed over frozen, muddy, or otherwise unstable material.

All fill or backfill shall be placed beneath exterior paved areas shall be compacted to not less than 90% of maximum density.

All fill and backfill shall be placed in lifts not greater than 8 inches in thickness, loose measurement, prior to compaction.

Areas of unsuitable and unstable subgrade and aggregate base course shall be removed, disposed of and treated in accordance with the Special Provisions and as directed by the Engineer.

All density measurements referenced above shall be in accordance with ASTM designation D1557-78 modified proctor method.

Contractor is responsible for maintaining a final grade that is suitable for drainage, seeding and landscaping (minimum of 6" of topsoil). Contractor shall restore all disturbed areas to preconstruction conditions or better as directed by the Engineer.

Contractor shall protect and prevent damage to existing trees which are not indicated on the plans to be removed.

The contractor shall catalog, document and remove existing street signs and posts and stockpile them at a safe location to prevent damage and theft. This work shall be considered incidental to the project.

If existing brick or other pavement base course is encountered during HMA surface removal operations the depth and quantity of HMA surface removal shall be adjusted in accordance with section 440 of the IDOT Standard Specifications.

**EROSION AND SEDIMENTATION CONTROL NOTES:**

Erosion control practices shall be constructed in accordance with the IDOT Standard Specifications, the Standards for Soil Erosion and Sediment Control as contained in EPA/WPC/ 87-012 or current edition and according to Procedures and Standards for Urban Soil Erosion and Sedimentation Control in Illinois, latest edition, and according to the Standards of the City of Rochelle.

A temporary sediment barrier of straw bales, filter fabric, or other approved barrier shall be placed around each storm sewer inlet potentially impacted by work. This work shall be considered incidental to the project contract cost. Fabric filter fences or straw bales shall be placed around any stock pile with more than 10 cu. yd. of material. At the end of each work day, the contractor shall sweep or clean (not flush) and dispose of any construction soil material and debris from the street.

The Engineer shall determine the adequacy of the contractor's erosion control efforts. The Engineer or his designated representative shall have full authority to suspend or limit the contractor's operations pending adequate performance of erosion control methods.

The contractor shall inspect erosion control structures daily and immediately after any major storm. All mud and debris shall be swept clean from roadways at the end of each working day or as directed by the Engineer. This item shall be considered incidental to the contract.

Refer to the Special Provisions for further requirements of contract pay items.

**SUMMARY OF QUANTITIES  
CONSTRUCTION TYPE CODE: 0005**

Item No	Items	Unit	Quantity
20201200	REMOVAL AND DISPOSAL OF UNSUITABLE MATERIAL	CU YD	372.00
20900150	TRENCH BACKFILL	CU YD	26.00
21101615	TOPSOIL FURNISH AND PLACE, 4"	SQ YD	4,022.00
25000210	SEEDING, CLASS 2A	ACRE	0.83
25000400	NITROGEN FERTILIZER NUTRIENT	POUND	74.70
25000500	PHOSPHORUS FERTILIZER NUTRIENT	POUND	74.70
25000600	POTASSIUM FERTILIZER NUTRIENT	POUND	74.70
25100115	MULCH, METHOD 2	ACRE	0.83
31101000	SUBBASE GRANULAR MATERIAL, TYPE B	TON	595.00
35101400	AGGREGATE BASE COURSE, TYPE B	TON	1,510.00
40900100	BITUMINOUS MATERIALS (PRIME COAT)	GAL	1,058.00
40903085	HMA BINDER COURSE, IL-19.0, N70	TON	2,964.00
40903540	P HMA SURFACE COURSE, MIX "D", N70	TON	1,186.00
X4404400	PAVEMENT REMOVAL (SPECIAL)	SQ YD	840.00
44000168	HOT-MIX ASPHALT SURFACE REMOVAL, 5"	SQ YD	10,361.00
44000500	COMBINATION CURB AND GUTTER REMOVAL	FOOT	95.00
44300100	AREA REFLECTIVE CRACK CONTROL TREATMENT	SQ YD	10,587.00
48203021	HOT-MIX ASPHALT SHOULDERS, 6"	SQ YD	2,969.00
50105220	PIPE CULVERT REMOVAL	FOOT	72.00
542A0223	PIPE CULVERT, CLASS A, TYPE 1, 18" (RCP)	FOOT	60.00
54213663	PRECAST REINFORCED CONCRETE FES, 18"	EACH	2.00
60604400	COMB CONC CURB & GLITTER, TYPE B-6 18	FOOT	95.00
60624800	CORRUGATED MEDIAN	SQ FT	120.00
67100100	MOBILIZATION	L SUM	1.00
X7010216	TRAFFIC CONT & PROT, SPECIAL	L SUM	1.00
70106800	CHANGEABLE MESSAGE SIGN	CAL MO	3.00
70300100	SHORT TERM PAVEMENT MARKING	FOOT	325.00
70301000	WORK ZONE PAVEMENT MARKING REMOVAL	SQ FT	108.00
78000100	THPL PVT MARKING - LTR & SYM	SQ FT	98.40
78000200	THPL PVT MARKING - LINE 4"	FOOT	7,865.00
78000400	THPL PVT MARKING - LINE 6"	FOOT	339.00
78000600	THPL PVT MARKING - LINE 12"	FOOT	307.00
78000800	THPL PVT MARKING - LINE 24"	FOOT	66.00

Δ SPECIALTY ITEMS

Mixture Use(s)	Binder	Surface
AC	PG 64-22	SBS PG 70-22
Mix	IL 19.0	IL 9.5
Fric Agg	NA	D
Voids	4.0 @ N70	4.0 @ N70

Station	Pavement Removal (Special)	Remove & Dispose Unsuitable Materials	Subbase Granular Material	Aggregate Base Course, Type B
101+75 Lt	232 Sq Yd	NA	NA	NA
102+47 Lt	NA	84 Cu Yd	NA	149 Ton
112+77 Lt - 114+10 Lt	117 Sq Yd	59 Cu Yd	108 Ton	53 Ton
115+92 Lt - 117+06 Lt	152 Sq Yd	50 Cu Yd	91 Ton	69 Ton
117+81 Lt - 118+40 Lt	79 Sq Yd	26 Cu Yd	144 Ton	36 Ton
HMA Shoulder Agg Base Crse	NA	NA	NA	901 Ton
Contingency	260 Sq Yd	153 Cu Yd	252 Ton	302 Ton
Total	840 Sq Yd	372 Cu Yd	595 Ton	1510 Ton

\*Limits of Pavement Removal and Removal and Disposal of Unsuitable Materials subject to change per the direction of the Engineer.



City of Rochelle  
Engineering Department  
417 N. 6th St. Rochelle, IL 61068

PROJECT:

**Veterans Parkway  
IL Rt 251 to S. Main St.  
Sec. #11-00111-00-RS**

REVISIONS			
REV	DESCRIPTION	DATE	APPROVED

DRAWING:

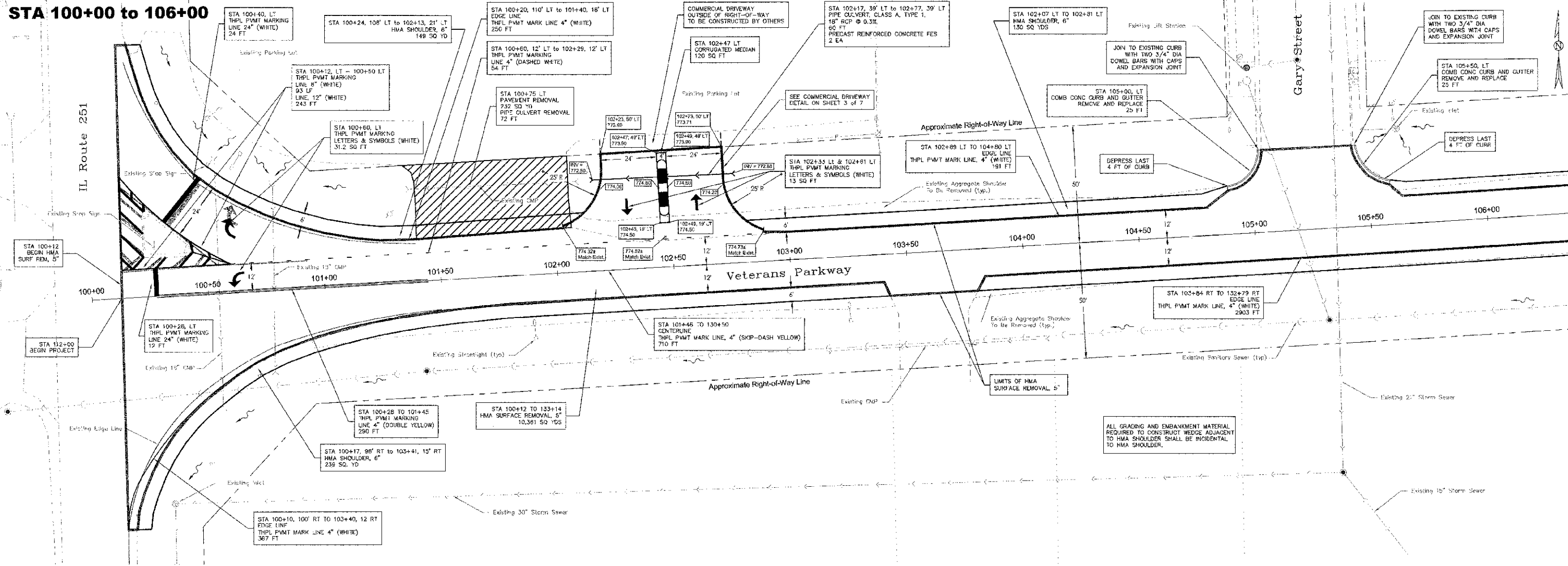
**General Notes/Summary of Quantities**

DRAWN BY: CW  
CHECKED BY: ST  
DATE: 4/5/13  
SCALE  
HORIZ SCALE: NA  
VERT SCALE: NA

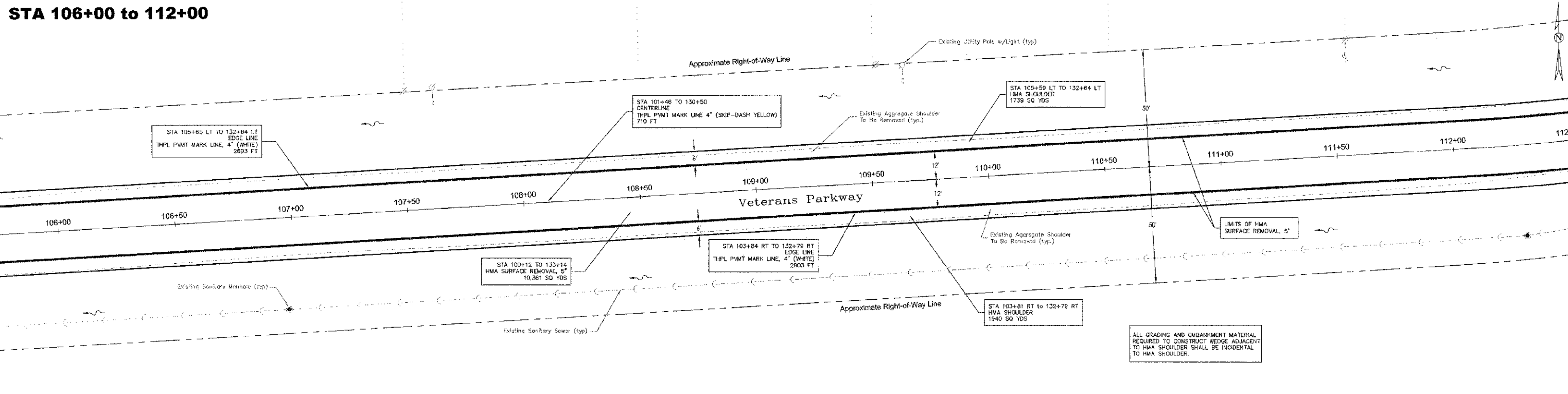
SHEET



**STA 100+00 to 106+00**

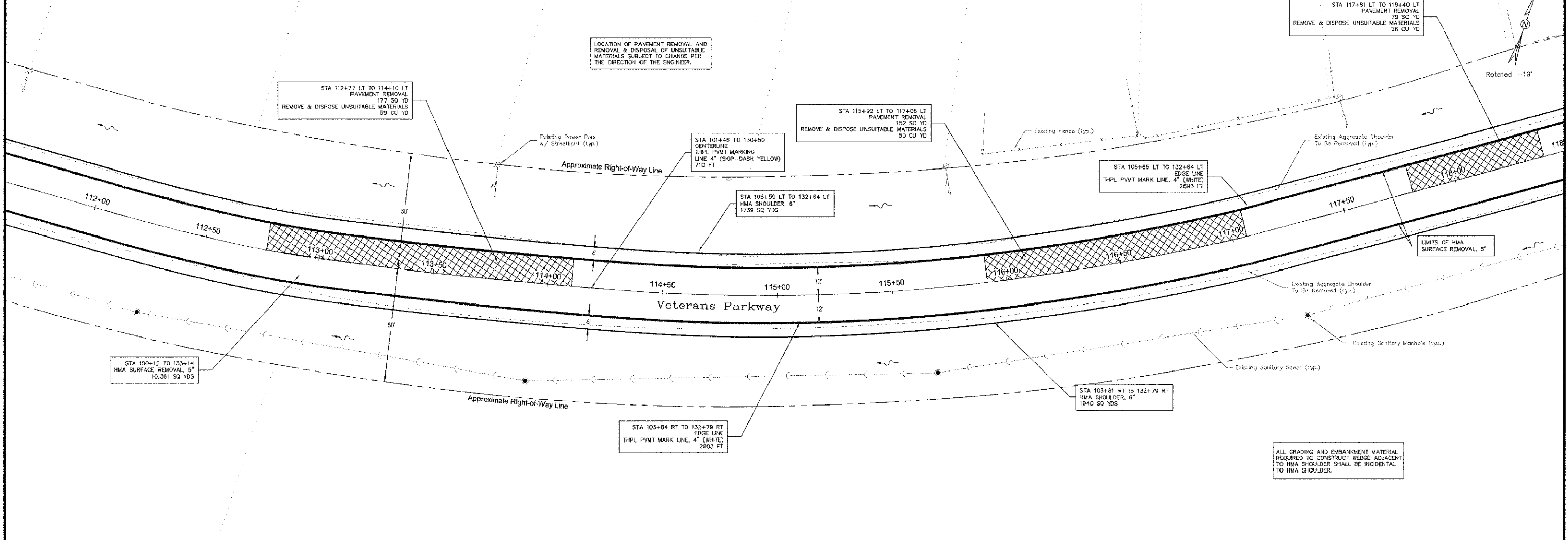


**STA 106+00 to 112+00**

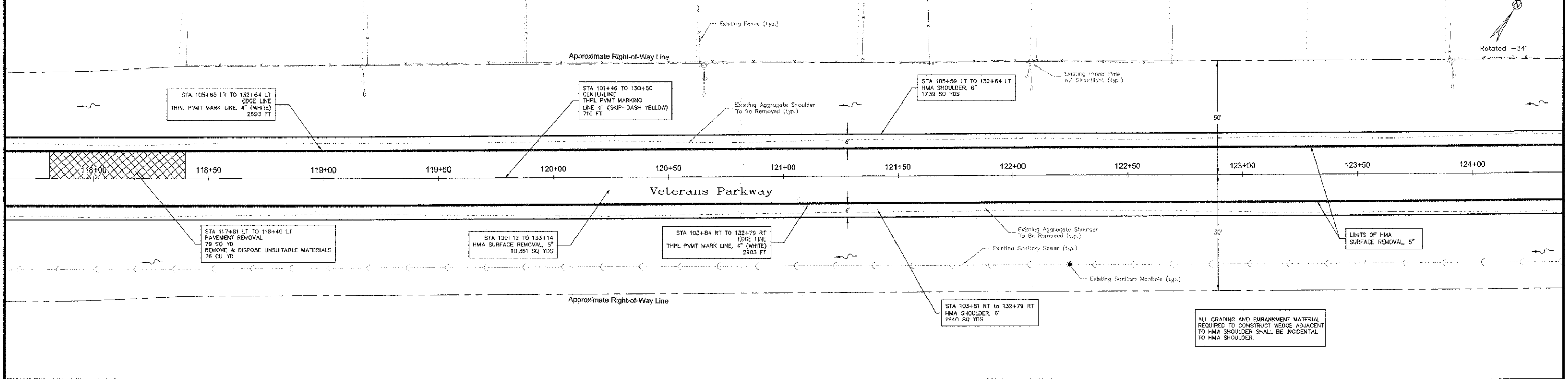


REVISIONS			
REV	DESCRIPTION	DATE	APPROVED

**STA 112+00 to 118+00**

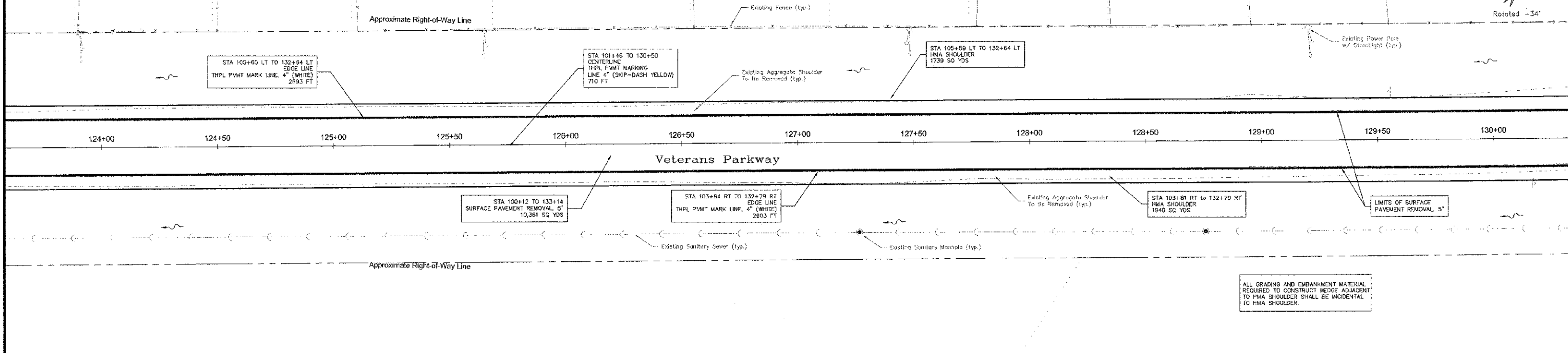


**STA 118+00 to 124+00**

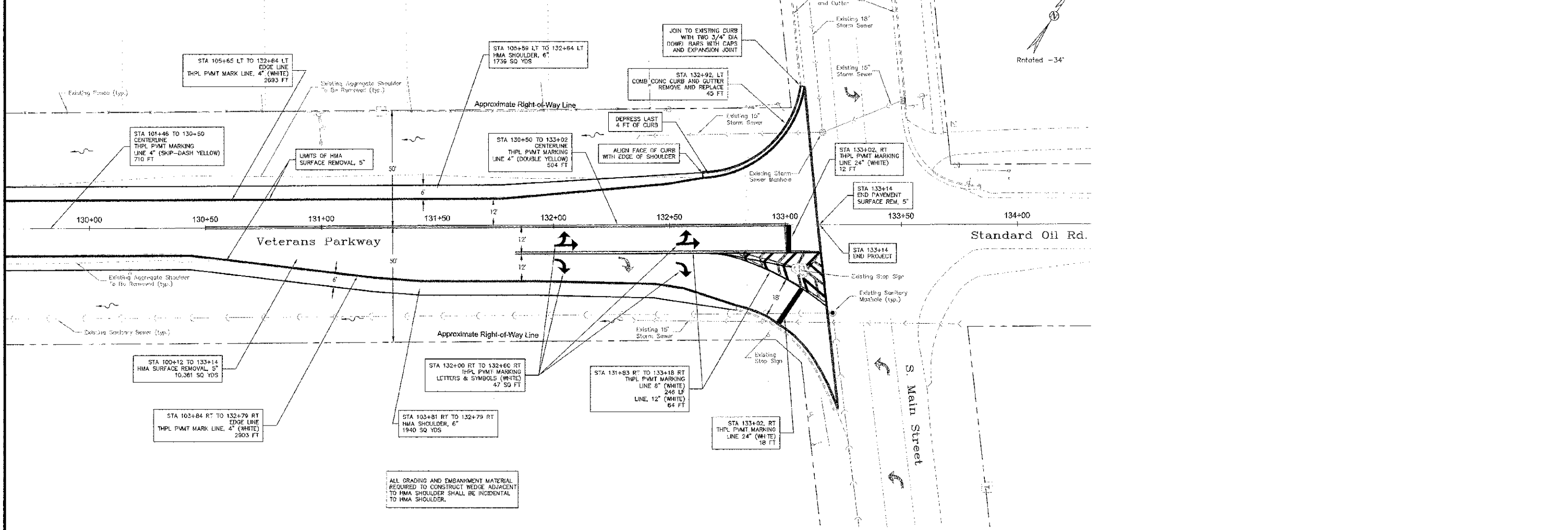


REVISIONS			
REV	DESCRIPTION	DATE	APPROVED

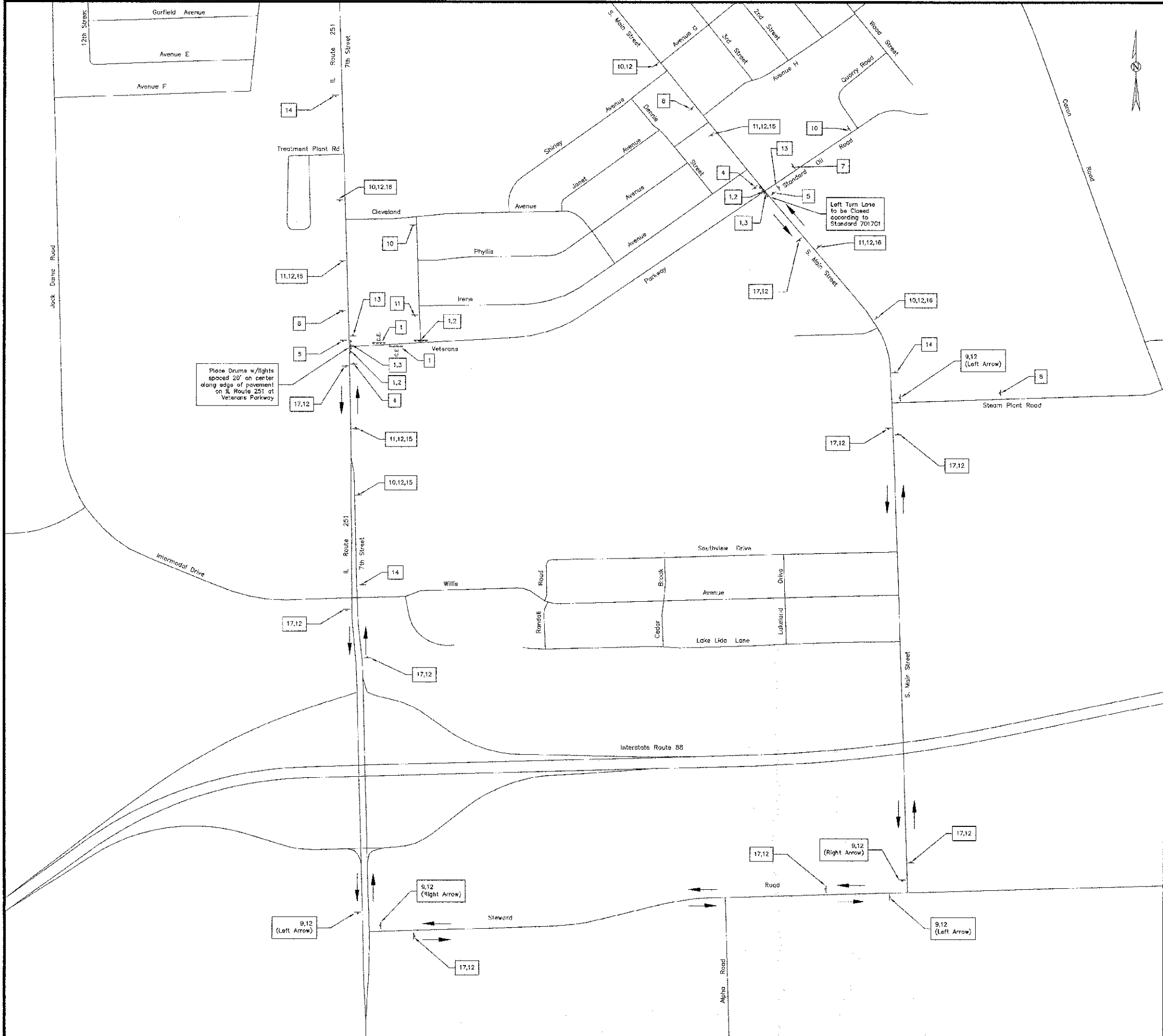
**STA 124+00 to 130+00**



**STA 130+00 to 133+14**



REVISIONS			
REV	DESCRIPTION	DATE	APPROVED



**Notes:**

The contractor shall furnish, install, and maintain all temporary traffic control devices as required by the latest editions of the Manual for Uniform Traffic Control Devices (MUTCD), Illinois Supplement to the MUTCD, Illinois Department of Transportation Standard Specifications and Details, Special Provisions, and as directed by the Engineer.

The contractor shall have all temporary traffic control devices installed prior to closure on Veterans Parkway.

Changeable Message Signs shall be installed 7 calendar days (min) prior to closure of Veterans Parkway.

Flaggers, signs, and other devices shall be required when construction activities encroach on the IL Route 251 or the S. Main Street right-of-way or as directed by the Engineer. See Traffic Control and Protection Special Provisions and applicable standards for further information and requirements.

The Contractor shall make the require notifications as outlined in the Special Provisions for Traffic Control and Protection a minimum of 48 hours prior to closing Veterans Parkway.

The Contractor shall be responsible for all utility locates that may be required for the installation of any temporary traffic control devices.

All Construction Traffic shall utilize established Truck Routes. No construction traffic shall be routed on S. Main Street north of Veterans Parkway

Special attention is called to article 107.09 and 107.14 of the Illinois Department of Transportation Standard Specifications for Road and Bridge Construction, latest edition, and Standard 701901-02 and BLR 21-9. The presence of temporary traffic control shown on this drawing or standards in the project plans or specifications, whether a pay item or not, does not relieve the Contractor of their obligation to provide protection to the public in accordance to Article 107.14 of the Standard Specifications. This article stipulates that the Contractor shall provide to the satisfaction of the Engineer, all protection deemed necessary beyond that shown in the plans or specifications.

The Contractor shall contact the Engineer prior to installation of any temporary traffic control device.

The Contractor shall promptly remove or cover all temporary traffic control devices immediately after Veterans Parkway is open to traffic. All temporary traffic control devices shall be removed from the project within 3 calendar days of the completion of the project.

All labor, materials, and equipment required to furnish, install, maintain, and remove temporary traffic control devices to the satisfaction of the Engineer shall be paid for at the contract unit price for TRAFFIC CONTROL AND PROTECTION, SPECIAL.

LEGEND		
No	Description	MUTCD No.
1	Type III Barricades	NA
2	Road Closed	R11-2
3	Detour Arrow	M4-10
4	No Right Turn	R3-1
5	No Left Turn	R3-2
6	Road Construction Ahead	W20-1
7	Road Closed Ahead	W20-3
8	Detour Ahead	W20-2
9	Detour w/arrow	M4-9
10	Road Closed Ahead	W20-1
11	Road Closed 500 FT	W20-3
12	Veterans Pkwy Plaque	NA
13	End Detour	M4-8a
14	Message Board	NA
15	Right Arrow	W1-6
16	Left Arrow	W1-6
17	Detour	W4-8

PROJECT:

**Veterans Parkway**  
**IL Rt 251 to S. Main St.**  
**MFT Sec. #11-00111-00-RS**

REVISIONS			
REV	DESCRIPTION	DATE	APPROVED

DRAWING:		
<b>Traffic Control Plan</b>		
DRAWN BY: CW	SCALE	SHEET
CHECKED BY: ST	HORZ SCALE: NA	<b>7 of 7</b>