

STATE OF ILLINOIS  
DEPARTMENT OF TRANSPORTATION  
DIVISION OF HIGHWAYS

PROPOSED  
HIGHWAY PLANS

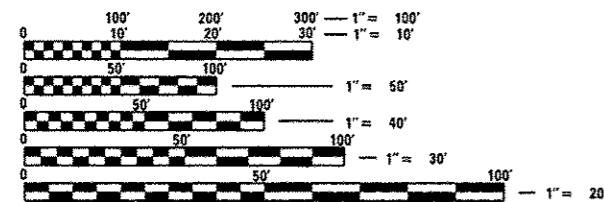
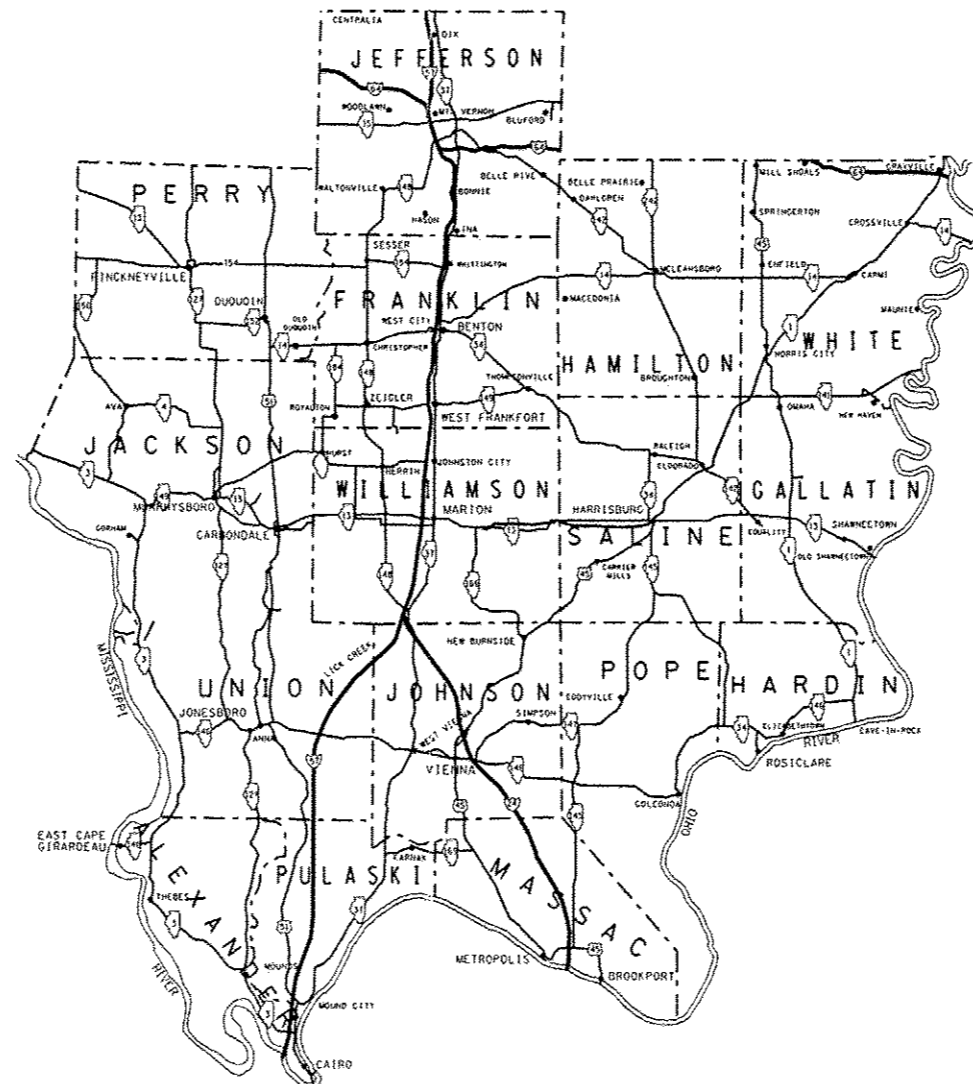
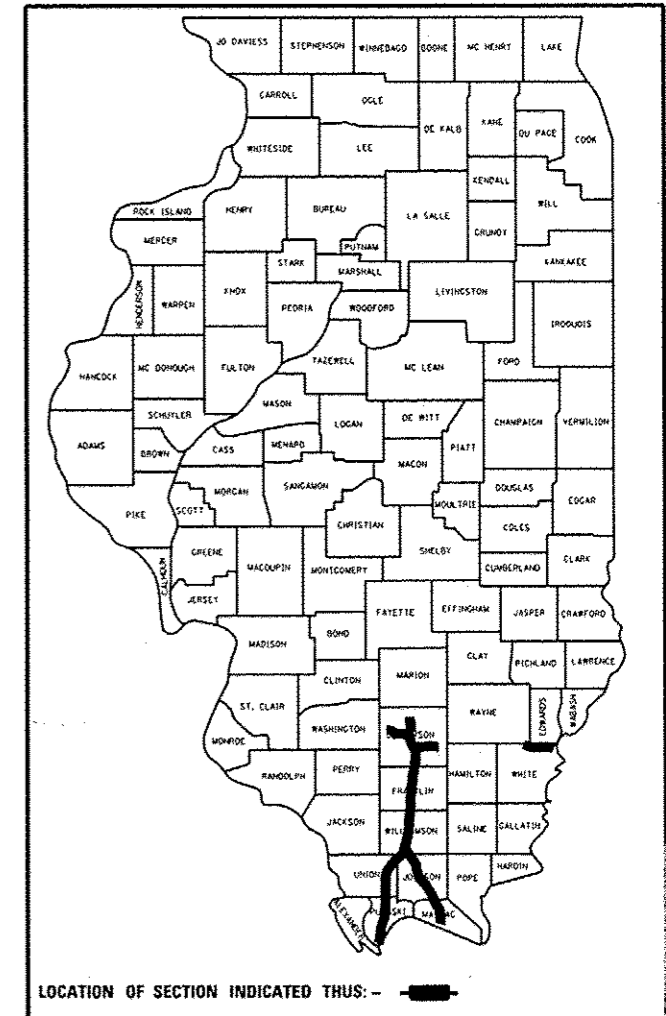
VARIOUS ROUTES  
SECTION D9 SAFETY SIGNAGE 2013-1  
PROJECT HSIP-0005(936)  
VARIOUS COUNTIES

C-99-032-13

FOR INDEX OF SHEETS, SEE SHEET NO. 3

F.A.I. RTE.	SECTION	COUNTY	TOTAL SHEETS	SHEET NO.
*	D9 SAFETY SIGNAGE 2013-1	VARIOUS	34	1
ILLINOIS CONTRACT NO. 78362				
*VARIOUS ROUTES				

D-99-030-13



FULL SIZE PLANS HAVE BEEN PREPARED USING STANDARD ENGINEERING SCALES. REDUCED SIZED PLANS WILL NOT CONFORM TO STANDARD SCALES. IN MAKING MEASUREMENTS ON REDUCED PLANS, THE ABOVE SCALES MAY BE USED.

J.U.L.I.E.  
JOINT UTILITY LOCATION INFORMATION FOR EXCAVATION  
1-800-892-0123  
OR 811

PROJECT ENGINEER: MELISSA COLE  
PROJECT MANAGER: CHARLES STEIN

CONTRACT NO. 78362

STATE OF ILLINOIS  
DEPARTMENT OF TRANSPORTATION  
DIVISION OF HIGHWAYS

SUBMITTED April 4 2013  
Jeffrey L. Keam  
DEPUTY DIRECTOR OF HIGHWAYS, REGION ENGINEER

May 10 2013  
John D. Baranzelli, PE, Jr.  
acting ENGINEER OF DESIGN AND ENVIRONMENT

May 10 2013  
Omer Osman, PE/Jr.  
DIRECTOR OF HIGHWAYS, CHIEF ENGINEER

PRINTED BY THE AUTHORITY  
OF THE STATE OF ILLINOIS