

LAST SAVED = 1/24/2013  
 PEN TABLE = V:\447441  
 PLOT DRIVER = pdfNOCLAYERS%dtcf9

FILE NAME =  
 I:\1001100\Phase II - 76817\Cad\T\Plans\074\_0876817-sht-drain-profile.dgn

USER NAME = beriechmann  
 DESIGNED -  
 DRAWN -  
 PLOT SCALE = 20.0000' / in.  
 CHECKED -  
 PLOT DATE = 1/25/2013 3:32:46 PM

DESIGNED -  
 DRAWN -  
 CHECKED -  
 DATE -

REVISED -  
 REVISED -  
 REVISED -  
 REVISED -

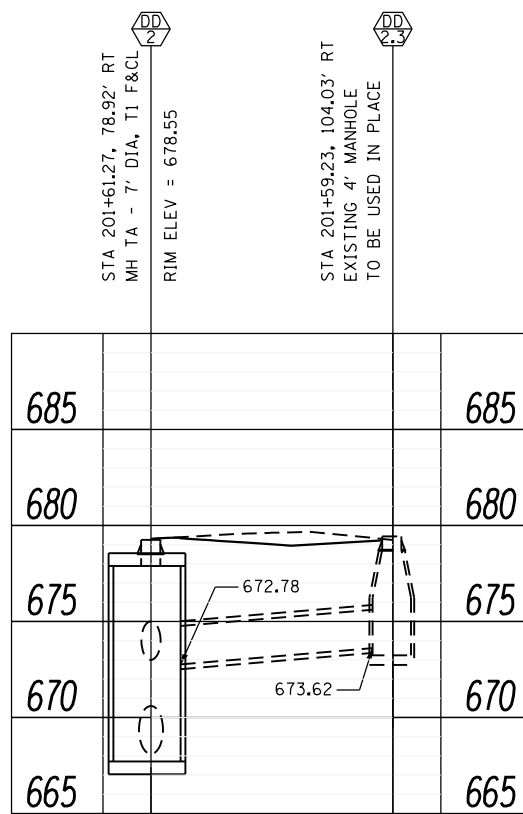
STATE OF ILLINOIS  
 DEPARTMENT OF TRANSPORTATION



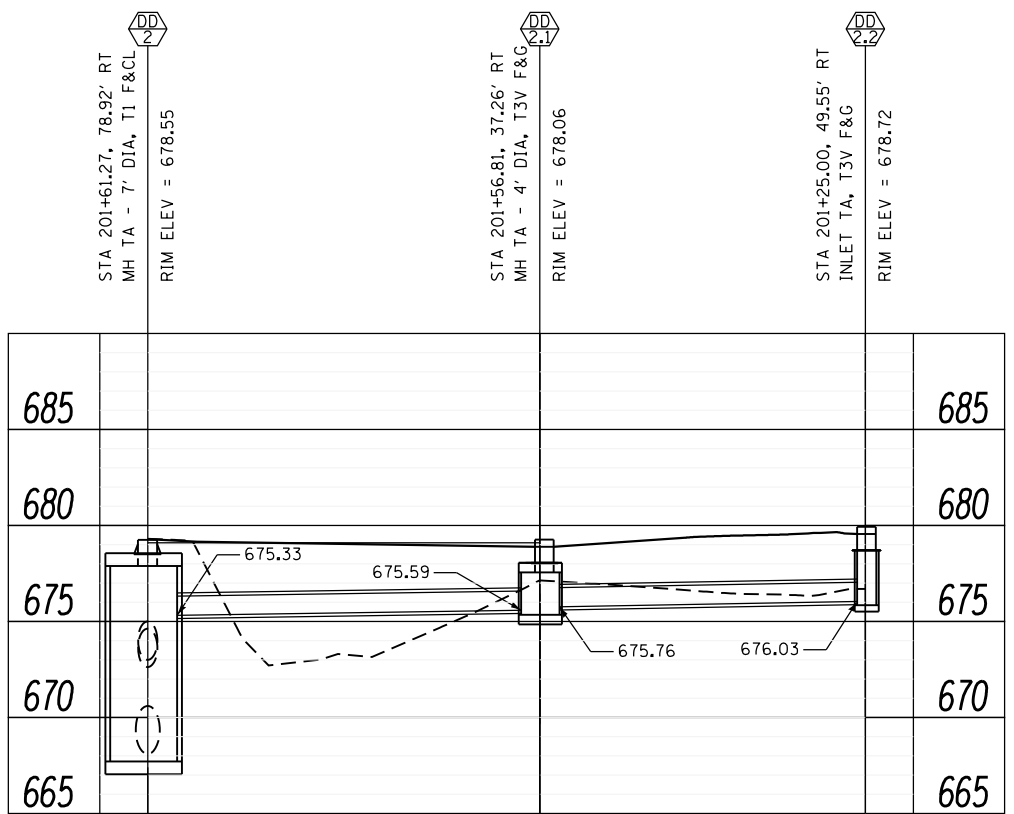
SCALE: SHEET NO. 29 OF 38 SHEETS STA. TO STA.

DRAINAGE PROFILES  
 SYSTEM DD

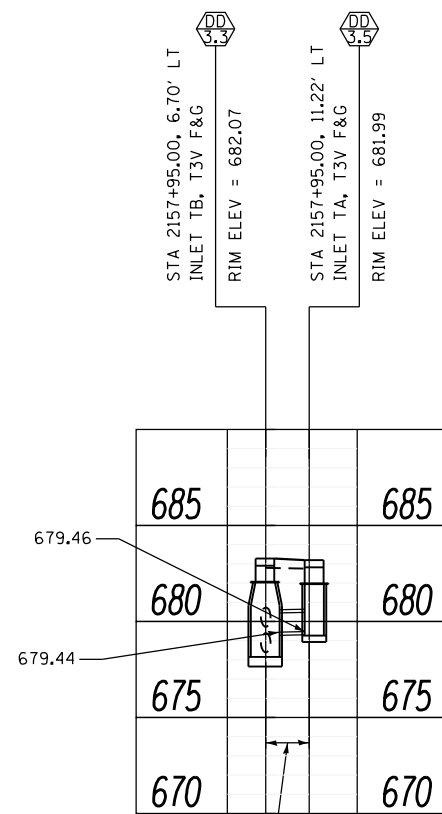
F.A.P. RTE. 312	SECTION 68-WRS-1	COUNTY MONROE	TOTAL SHEETS 760	SHEET NO. 271
CONTRACT NO. 76817				ILLINOIS FED. AID PROJECT



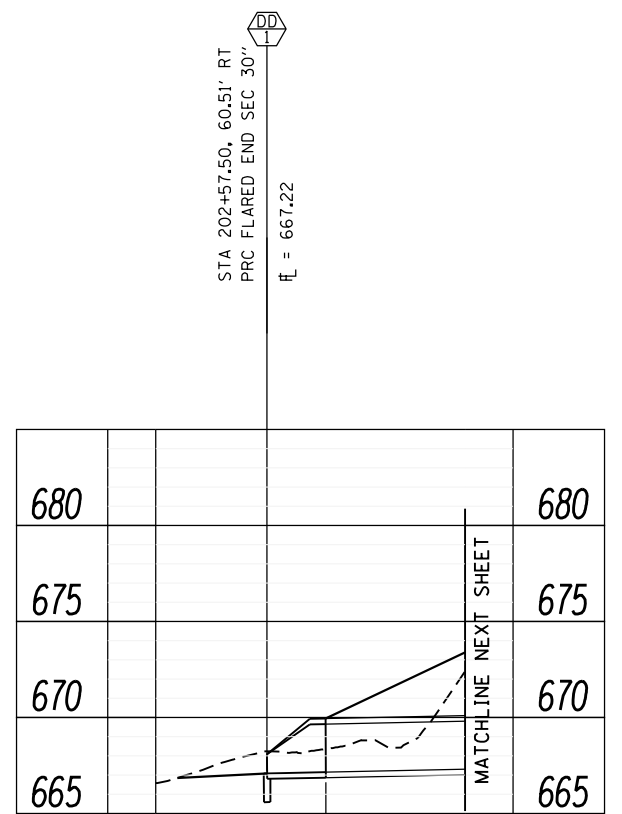
EXISTING 25' - STORM SEWERS, 24"  
 CLASS A, TY 1, @4.25%  
 TO BE USED IN PLACE



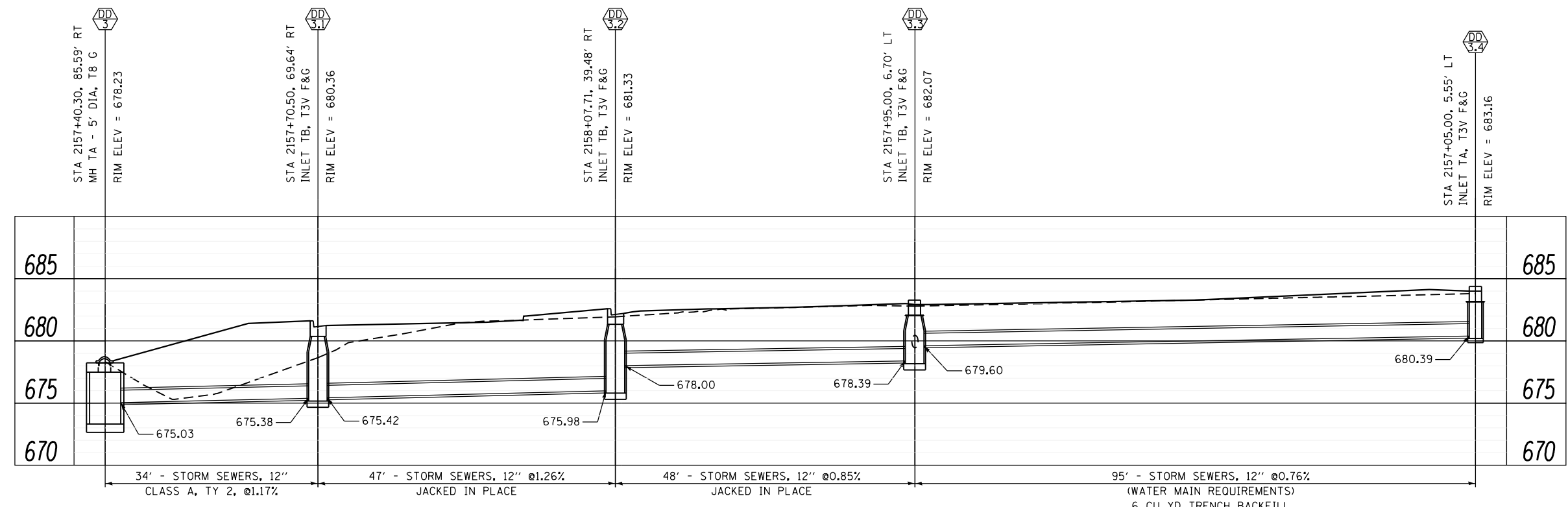
40' - STORM SEWERS, 12"  
 CLASS A, TY 1, @0.73%  
 33' - STORM SEWERS, 12"  
 CLASS A, TY 1, @0.88%  
 3 CU YD TRENCH BACKFILL



4' - STORM SEWERS, 12"  
 CLASS A, TY 1, @0.85%



91' - STORM SEWERS, 30"  
 CLASS A, TY 2, @1.03%



34' - STORM SEWERS, 12"  
 CLASS A, TY 2, @1.17%  
 47' - STORM SEWERS, 12" @1.26%  
 JACKED IN PLACE  
 48' - STORM SEWERS, 12" @0.85%  
 JACKED IN PLACE  
 95' - STORM SEWERS, 12" @0.76%  
 (WATER MAIN REQUIREMENTS)  
 6 CU YD TRENCH BACKFILL