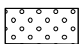

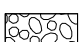

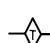


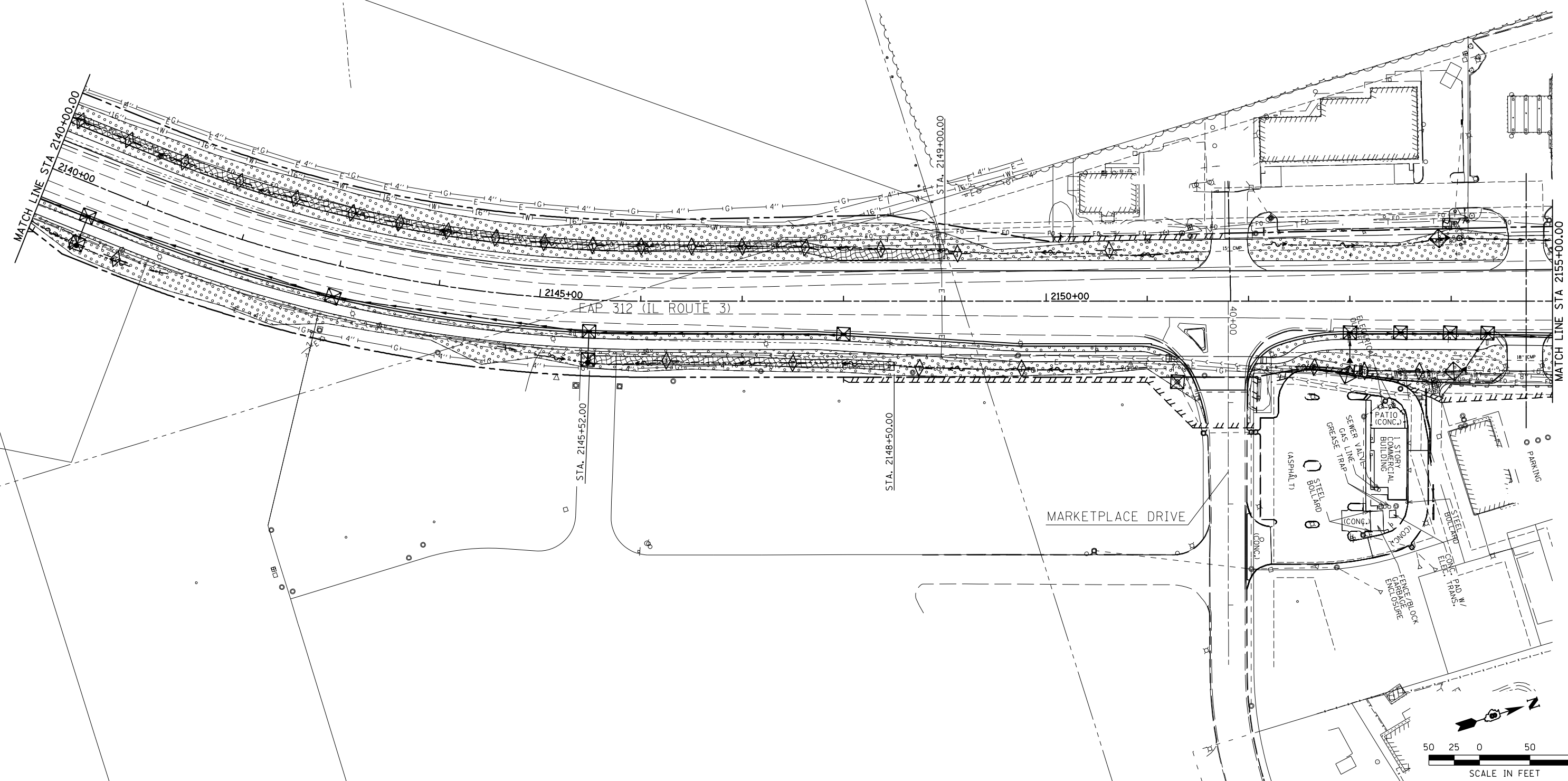


LEGEND

-  SEEDING, CLASS 2A AND TEMPORARY EROSION CONTROL SEEDING
-  EROSION CONTROL BLANKET AND TEMPORARY EROSION CONTROL BLANKET
-  RIPRAP
-  AGGREGATE DITCH
-  TEMPORARY DITCH CHECK
-  INLET & PIPE PROTECTION
-  PERIMETER EROSION BARRIER



FILE NAME =	USER NAME = Richard Heinke	DESIGNED - JAH	REVISED -
F:\Projects\DOT PROJECTS\09-101-11.4\Drawings\CADD Sheets\Contract 2\112.0876817-sh		DRAWN - RNH	REVISED -
	PLOT SCALE = 100.0000' / in.	CHECKED - TMM	REVISED -
	PLOT DATE = 1/24/2013	DATE -	REVISED -

**STATE OF ILLINOIS
DEPARTMENT OF TRANSPORTATION**

McDonough-Whillow, P.C.
PROFESSIONAL DESIGN NO. 184-022754
SCALE: 1" = 50'

EROSION CONTROL PLAN
IL ROUTE 3
SHEET NO. 12 OF 19 SHEETS
STA. 2140+00.00 TO STA. 2155+00.00

F.A.P. RTE. 312	SECTION 68-WRS-1	COUNTY MONROE	TOTAL SHEETS 760	SHEET NO. 220
CONTRACT NO. 76817				ILLINOIS FED. AID PROJECT