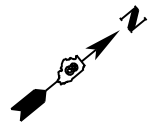


SEE FAP 312 (ILLINOIS ROUTE 3)
MAINTENANCE OF TRAFFIC FOR
MAINLINE INFORMATION



STAGE 1A - CONSTRUCTION ACTIVITIES

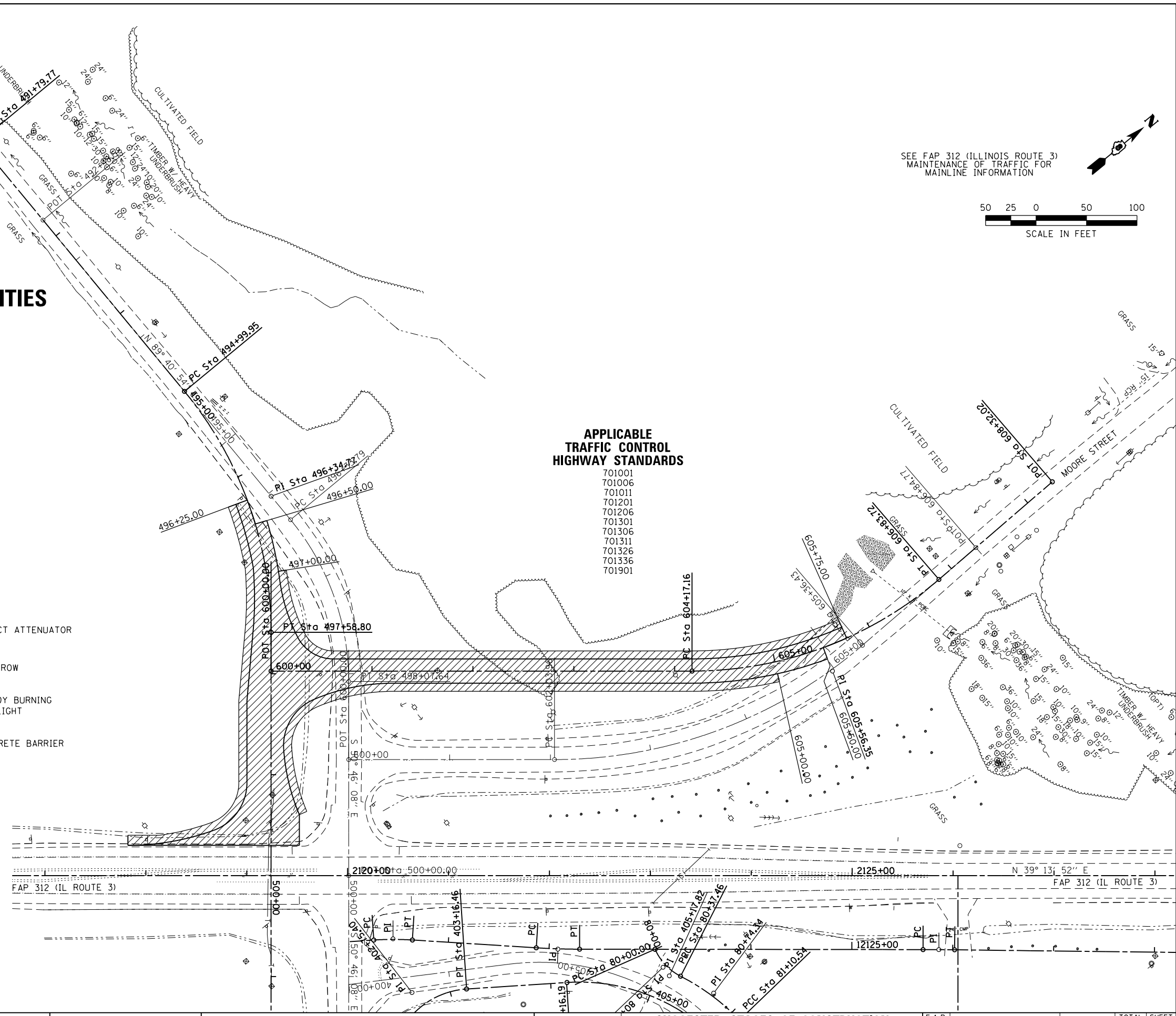
CONSTRUCT RELOCATED WEST LEG OF INTERSECTION
CONSTRUCT RELOCATED MOORE STREET

APPLICABLE TRAFFIC CONTROL HIGHWAY STANDARDS

- 701001
- 701006
- 701011
- 701201
- 701206
- 701301
- 701306
- 701311
- 701326
- 701336
- 701901

LEGEND

- TEMPORARY PAVEMENT
- PRESTAGE CONSTRUCTION
- STAGE 1 CONSTRUCTION
- STAGE 2 CONSTRUCTION
- STAGE 3 CONSTRUCTION
- TEMPORARY IMPACT ATTENUATOR
- TRAFFIC FLOW ARROW
- DRUM WITH STEADY BURNING BI-DIRECTIONAL LIGHT
- TEMPORARY CONCRETE BARRIER



LAST SAVED = 1/23/2013
 PEN TABLE = W2444.dwg
 PLOT DRIVER = pdfplotlayers.pltcf9

FILE NAME =	USER NAME = beriechmann	DESIGNED -	REVISED -
I:\1001100\Phase II - 76817\Cad\T\Plans\069_0876817-sht-Staging-1A-MooreGall.dgn		DRAWN -	REVISED -
	PLOT SCALE = 100.0000' / 1"	CHECKED -	REVISED -
	PLOT DATE = 1/25/2013 3:31:22 PM	DATE -	REVISED -

STATE OF ILLINOIS
DEPARTMENT OF TRANSPORTATION

HORNER & SHIFRIN, INC.
ENGINEERS

SUGGESTED STAGES OF CONSTRUCTION AND TRAFFIC CONTROL
STAGE 1A - MOORE STREET / GALL ROAD

SCALE: 1" = 50' SHEET NO. 35 OF 46 SHEETS STA. 2108+00.00 TO STA. 2122+00.00

F.A.P. RTE.	SECTION	COUNTY	TOTAL SHEETS	SHEET NO.
312	68-WRS-1	MONROE	760	194
CONTRACT NO. 76817				
ILLINOIS FED. AID PROJECT				