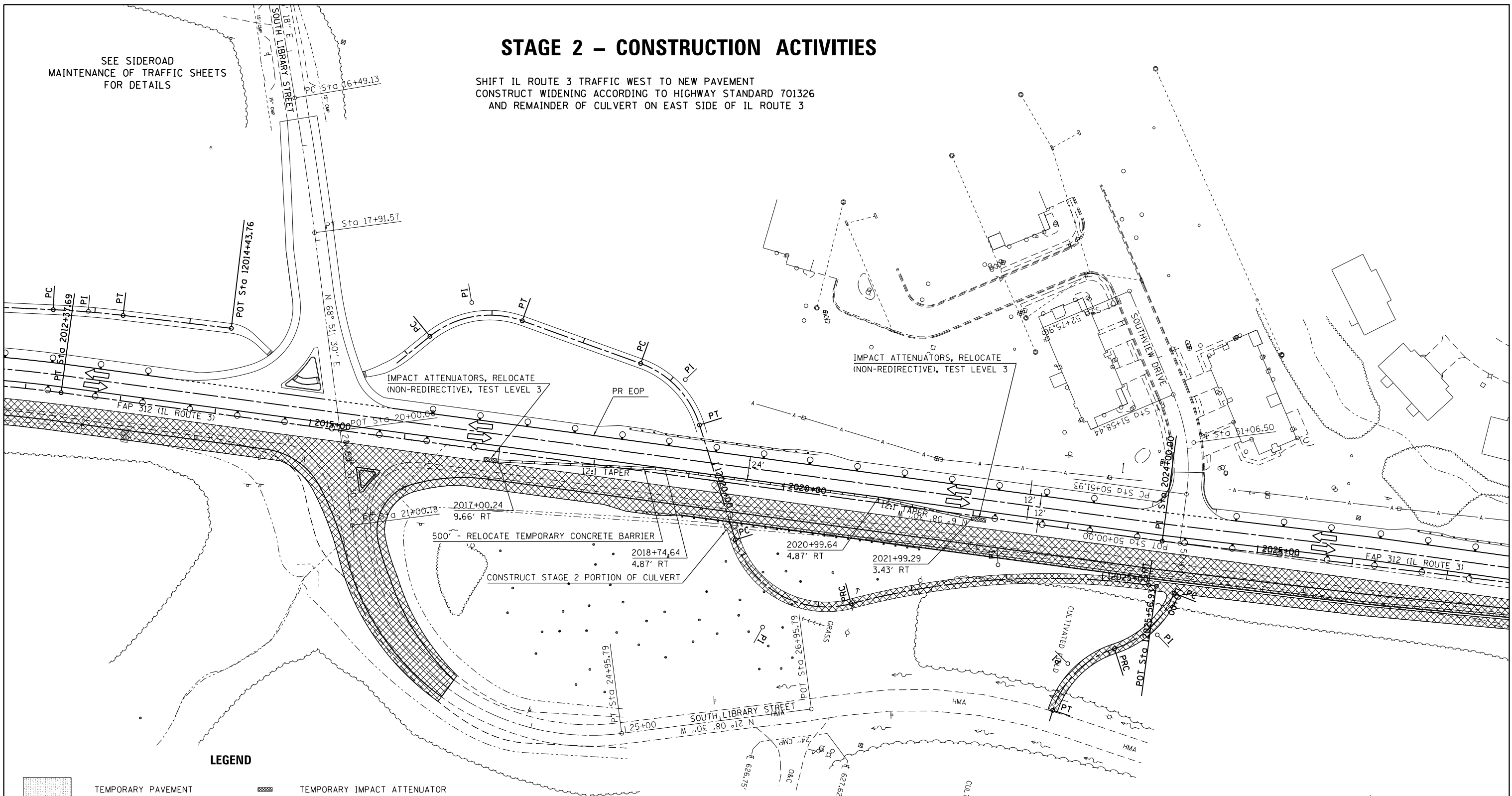


STAGE 2 – CONSTRUCTION ACTIVITIES

SHIFT IL ROUTE 3 TRAFFIC WEST TO NEW PAVEMENT
 CONSTRUCT WIDENING ACCORDING TO HIGHWAY STANDARD 701326
 AND REMAINDER OF CULVERT ON EAST SIDE OF IL ROUTE 3

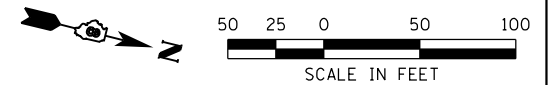
SEE SIDEROAD
 MAINTENANCE OF TRAFFIC SHEETS
 FOR DETAILS



LEGEND

- TEMPORARY PAVEMENT
- TEMPORARY IMPACT ATTENUATOR
- PRESTAGE CONSTRUCTION
- TRAFFIC FLOW ARROW
- STAGE 1 CONSTRUCTION
- DRUM WITH STEADY BURNING BI-DIRECTIONAL LIGHT
- STAGE 2 CONSTRUCTION
- TEMPORARY CONCRETE BARRIER
- STAGE 3 CONSTRUCTION

SEE SIDEROAD
 MAINTENANCE OF TRAFFIC SHEETS
 FOR DETAILS



LAST SAVED = 1/25/2013
 PEN TABLE = V:\A\141
 PLOT DRIVER = pdfnclayers\plotcf9

FILE NAME =	USER NAME = beriechmann	DESIGNED -	REVISED -
1:\1001100\Phase II - 76817\Cad\T\Plans\062_0876817-sht-Staging-2-IL3-02.dgn		DRAWN -	REVISED -
		CHECKED -	REVISED -
PLOT DATE = 1/25/2013 3:30:44 PM		DATE -	REVISED -

**STATE OF ILLINOIS
 DEPARTMENT OF TRANSPORTATION**

**HORNER &
 SHIRIN, INC.
 ENGINEERS**

**SUGGESTED STAGES OF CONSTRUCTION
 AND TRAFFIC CONTROL**
 STAGE 2 - STA 2019+30.00

SCALE: 1" = 50' SHEET NO. 10 OF 46 SHEETS STA. 2012+00.00 TO STA. 2027+00.00

F.A.P. RTE.	SECTION	COUNTY	TOTAL SHEETS	SHEET NO.
312	68-WRS-1	MONROE	760	169
CONTRACT NO. 76817				

ILLINOIS FED. AID PROJECT