
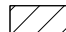

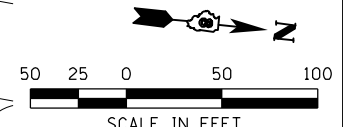
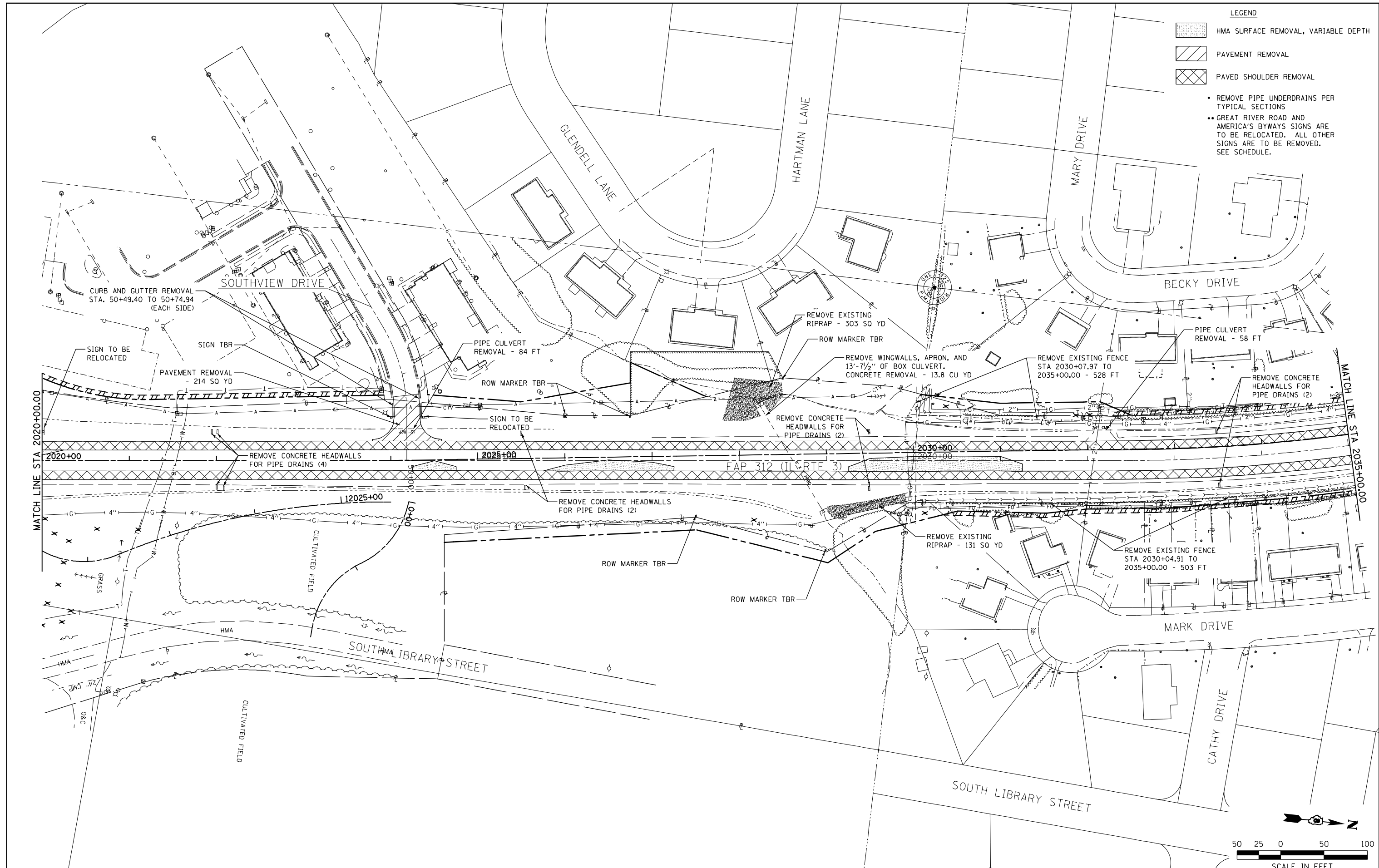
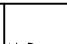


- LEGEND**
-  HMA SURFACE REMOVAL, VARIABLE DEPTH
 -  PAVEMENT REMOVAL
 -  PAVED SHOULDER REMOVAL
- REMOVE PIPE UNDERDRAINS PER TYPICAL SECTIONS
 - GREAT RIVER ROAD AND AMERICA'S BYWAYS SIGNS ARE TO BE RELOCATED. ALL OTHER SIGNS ARE TO BE REMOVED. SEE SCHEDULE.



FILE NAME = F:\Projects\IDOT PROJECTS\09-101-11.4\Drawings\CADD Sheets\Contract 2\154.0876817-sh-	USER NAME = Richard Heinke	DESIGNED - JAH	REVISED -	STATE OF ILLINOIS DEPARTMENT OF TRANSPORTATION	 McDonough-Whillow P.C. PROFESSIONAL DESIGN NO. 184-002754	REMOVAL PLAN IL ROUTE 3	F.A.P. RTE. 312	SECTION 68-WRS-1	COUNTY MONROE	TOTAL SHEETS 760	SHEET NO. 144
PLOT SCALE = 100.0000' / in.				SCALE: 1" = 50'		SHEET NO. 4 OF 19 SHEETS	STA. 2020+00.00 TO STA. 2035+00.00	CONTRACT NO. 76817			
PLOT DATE = 1/24/2013				DATE -		ILLINOIS FED. AID PROJECT					