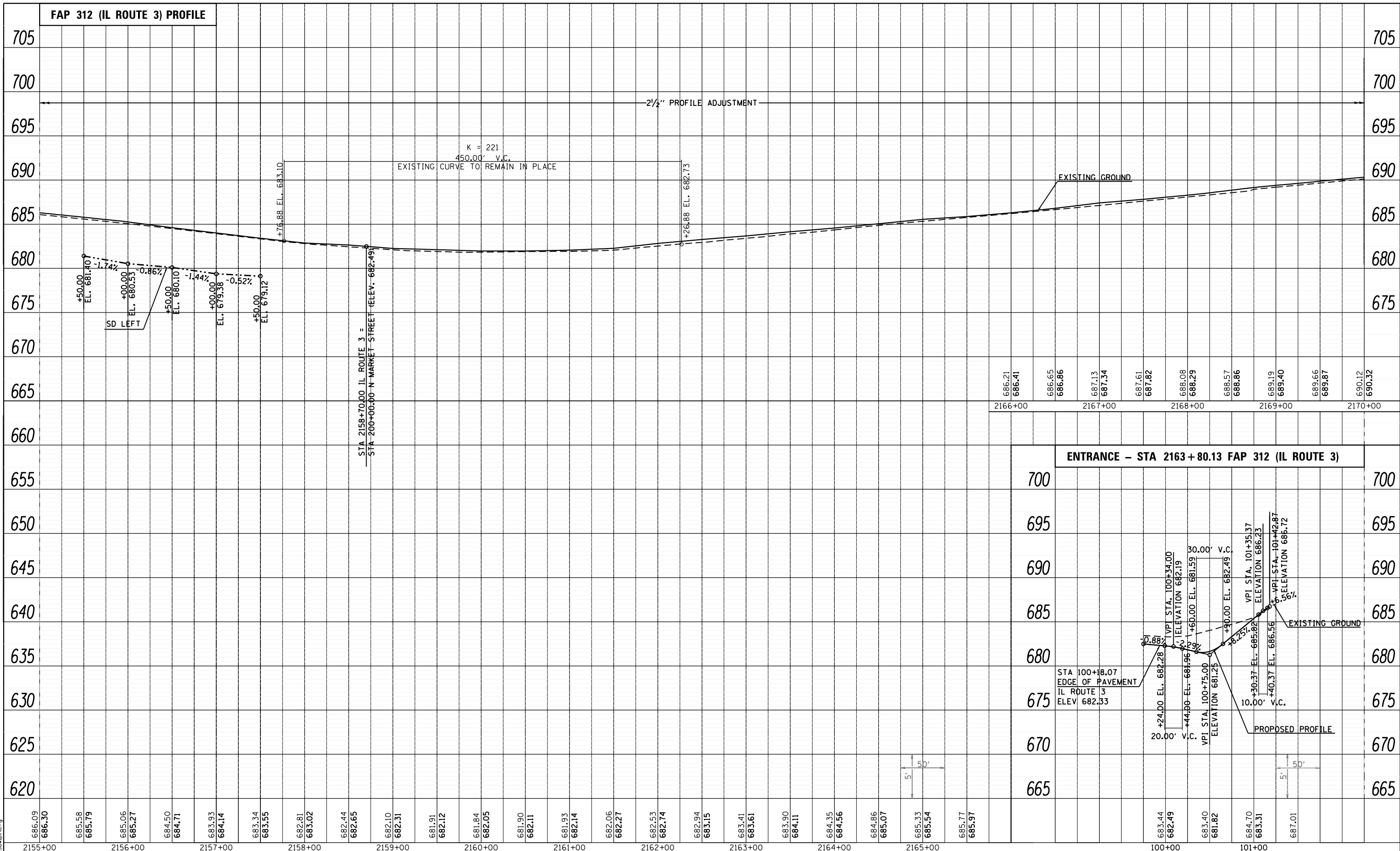
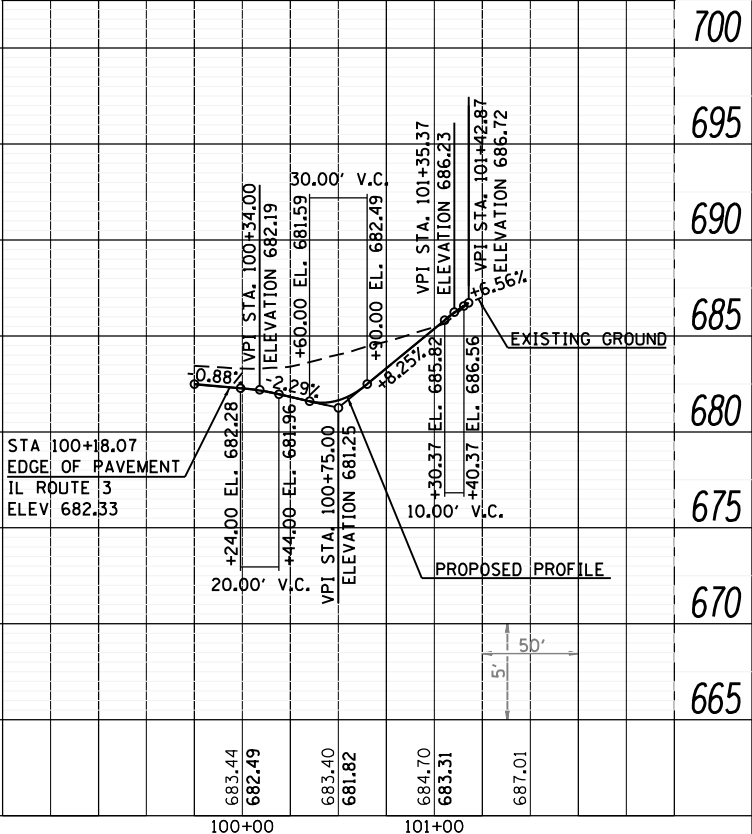


PLAN	SURVEYED	BY	DATE
	PLOTTED		
	NOTE BOOK		
	NO.		
	CHECKED		
	FILE NAME		

PROFILE	SURVEYED	BY	DATE
	PLOTTED		
	NOTE BOOK		
	NO.		
	CHECKED		
	FILE NAME		



ENTRANCE - STA 2163+80.13 FAP 312 (IL ROUTE 3)



LAST SAVED = 1/22/2013
 PEN TABLE = Vbl-Hs1.rtl
 PLOT DRIVER = pdfNLAVERSp=stcrfg

FILE NAME =	USER NAME = beriechmann	DESIGNED -	REVISED -
I:\10011005_Phase II - 76817\Cad\T\Plans\037_0876817-sht-profile-13.dgn		DRAWN -	REVISED -
		CHECKED -	REVISED -
		DATE -	REVISED -

**STATE OF ILLINOIS
 DEPARTMENT OF TRANSPORTATION**



PROFILE	FAP 312 (IL ROUTE 3)
SCALE: 50H:5V	SHEET NO. 26 OF 40 SHEETS
	STA. 2155+00.00 TO STA. 2170+00.00

F.A.P. RTE.	SECTION	COUNTY	TOTAL SHEETS	SHEET NO.
312	68-WRS-1	MONROE	760	126
CONTRACT NO. 76817				
ILLINOIS FED. AID PROJECT				