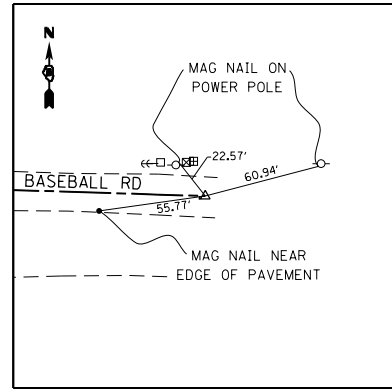
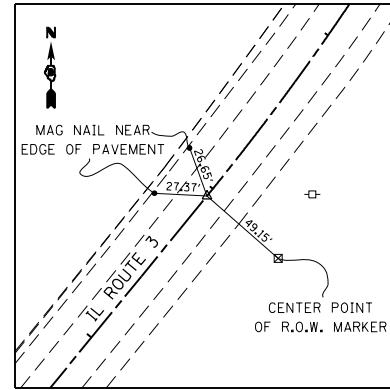


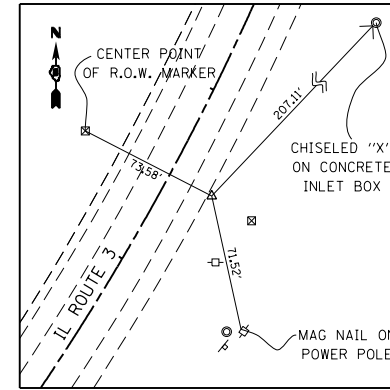
BASEBALL RD
P.T. STA 406+02.84
FOUND MAG NAIL
612,238.2340 N
2,298,98.8330 E



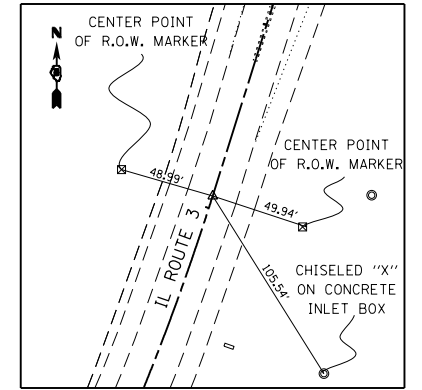
BASEBALL RD
END PROJECT STA 407+02.84
FOUND MAG NAIL
612,235.0970 N
2,299,087.7840 E



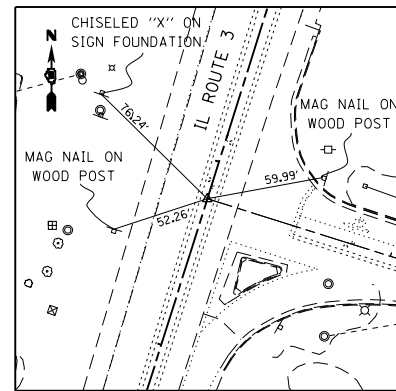
IL ROUTE 3
P.C. STA 2140+95.16
MAG NAIL
613,680.2558 N
2,299,932.7579 E



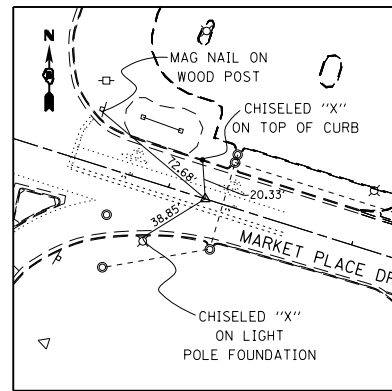
IL ROUTE 3
P.I. STA 2143+53.95
IRON PIN
613,880.7170 N
2,300,096.4320 E



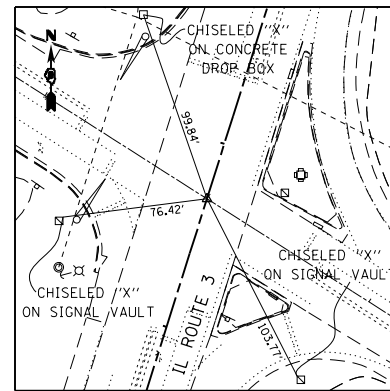
IL ROUTE 3
P.T. STA 2146+06.52
FOUND MAG NAIL
614,127.5340 N
2,300,174.2450 E



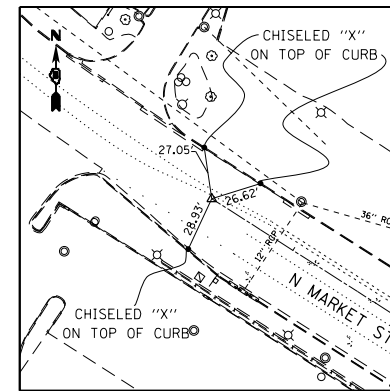
IL ROUTE 3 P.O.T. STA 2151+79.76
MARKET PLACE DR P.O.T. STA 40+40.00
FOUND MAG NAIL
614,674.2420 N
2,300,346.6030 E



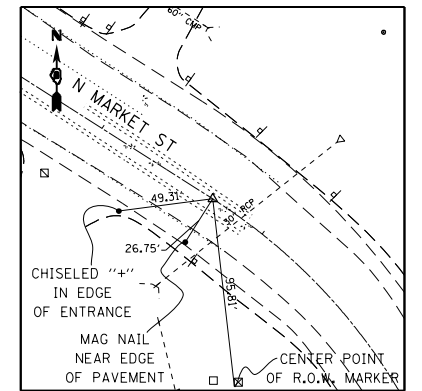
MARKET PLACE DR
END PROJECT STA 41+20.00
MAG NAIL
614,638.2720 N
2,300,461.0860 E



IL ROUTE 3 P.O.T. STA 2158+70.00
N MARKET ST P.O.T. STA 200+00.00
MAG NAIL
615,332.5400 N
2,300,554.1240 E



N MARKET ST
P.O.T. STA 197+50.00
MAG NAIL
615,466.8592 N
2,300,343.2907 E



N MARKET ST
P.C. STA 202+68.32
FOUND MAG NAIL
615,188.3790 N
2,300,780.4451 E

LAST SAVED = 1/25/2013
PEN TABLE = 1/25/2013
PLOT DRIVER = pdfNCLAYERS.plt

FILE NAME =	USER NAME = beriechmann	DESIGNED -	REVISED -
I:\1001100\Phase II - 76817\Cad\T\Plans\007_0876817-shr-ATB-19.dgn		DRAWN -	REVISED -
		CHECKED -	REVISED -
PLOT DATE = 1/25/2013 3:29:20 PM		DATE -	REVISED -

STATE OF ILLINOIS
DEPARTMENT OF TRANSPORTATION

HORNER &
SHIRIN, INC.
ENGINEERS

ALIGNMENTS, TIES, AND BENCHMARKS

SCALE: NONE

SHEET NO. 19 OF 20 SHEETS STA. TO STA.

F.A.P. RTE.	SECTION	COUNTY	TOTAL SHEETS	SHEET NO.
312	68-WRS-1	MONROE	760	99
CONTRACT NO. 76817			ILLINOIS FED. AID PROJECT	