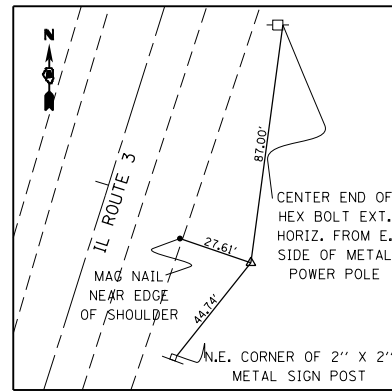
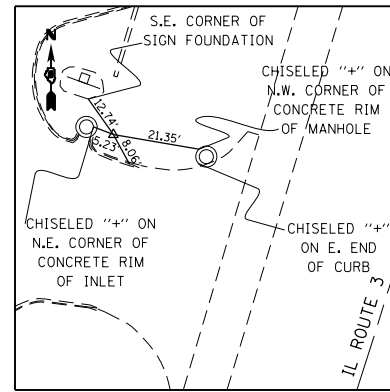


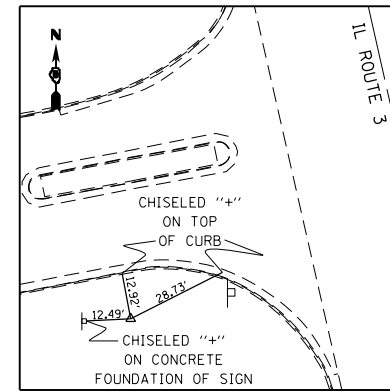
CP MW 34  
5/8" REBAR W/ CAP  
613,300.4240 N  
2,299,686.012 E  
STA 2136+44.89, 49.10' RT



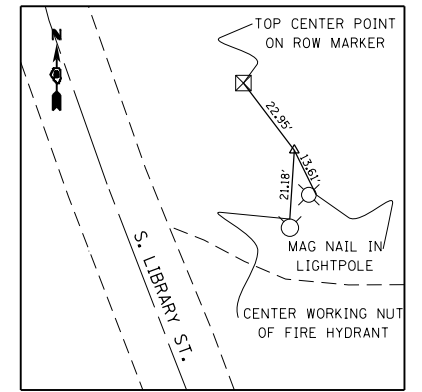
CP MW 35  
5/8" REBAR W/ CAP  
614,378.9090 N  
2,300,314.8990 E  
STA 2148+88.56, 58.56' RT



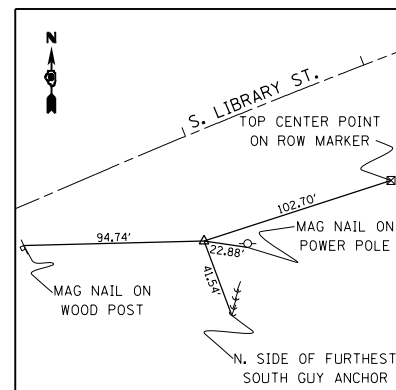
CP MW 36  
5/8" REBAR W/ CAP  
614,998.8220 N  
2,300,372.1060 E  
STA 2154+96.99, 73.27' LT



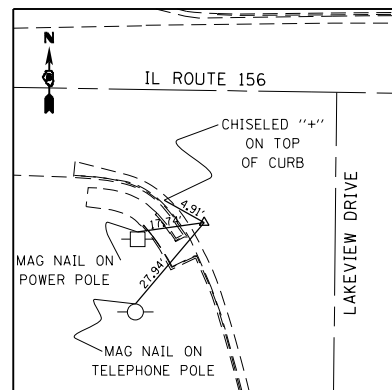
CP MW 37  
5/8" REBAR W/ CAP  
616,116.9060 N  
2,300,547.4420 E  
STA 2166+94.94, 84.15' LT



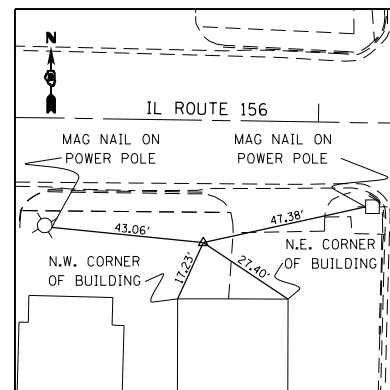
CP MW 39  
5/8" REBAR W/ CAP  
602,999.9550 N  
2,300,700.126 E  
STA 26+95.79, 50.51' RT



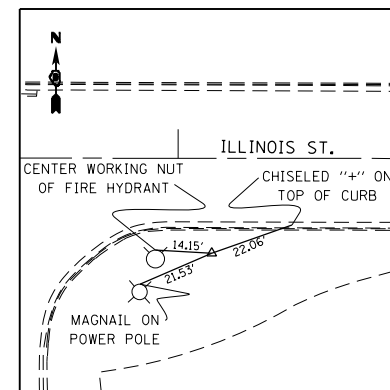
CP MW 40  
5/8" REBAR W/ CAP  
602,246.5800 N  
2,300,226.7500 E  
STA 16+87.83, 54.08' RT



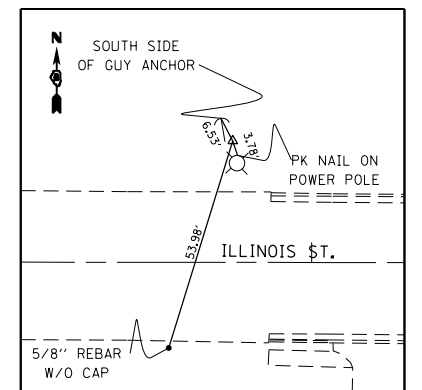
CP MW 41  
5/8" REBAR W/ CAP  
606,477.0200 N  
2,298,763.4100 E  
STA 90+48.59, 32.94' RT



CP MW 42  
5/8" REBAR W/ CAP  
606,464.4770 N  
2,299,579.0950 E  
STA 13+69.10, 33.38' RT



CP MW 43  
5/8" REBAR W/ CAP  
608,733.8850 N  
2,297,741.0830 E  
STA 15+08.72, 24.62' RT



CP MW 44  
5/8" REBAR W/ CAP  
608,787.8730 N  
2,298,612.7360 E  
STA 23+80.31, 30.24' LT

LAST SAVED = 1/25/2013  
PEN TABLE = 1025441.dwg  
PLOT DRIVER = pdfNCLAYERShp2.ctb

FILE NAME =	USER NAME = beriechmann	DESIGNED -	REVISED -
1:\1001100\Phase II - 76817\Cad\T\Plans\007_0876817-shd-ATB-11.dgn		DRAWN -	REVISED -
	PLOT SCALE = 100.0000' / 1"	CHECKED -	REVISED -
	PLOT DATE = 1/25/2013 3:29:12 PM	DATE -	REVISED -

STATE OF ILLINOIS  
DEPARTMENT OF TRANSPORTATION

HORNER &  
SHIRIN, INC.  
ENGINEERS

ALIGNMENTS, TIES, AND BENCHMARKS

SCALE: NONE

SHEET NO. 11 OF 20 SHEETS

STA.

TO STA.

F.A.P. RTE.	SECTION	COUNTY	TOTAL SHEETS	SHEET NO.
312	68-WRS-1	MONROE	760	91
CONTRACT NO. 76817				
ILLINOIS FED. AID PROJECT				