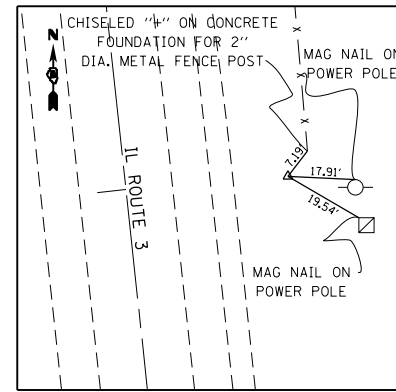
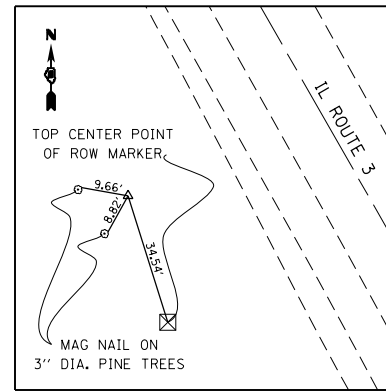


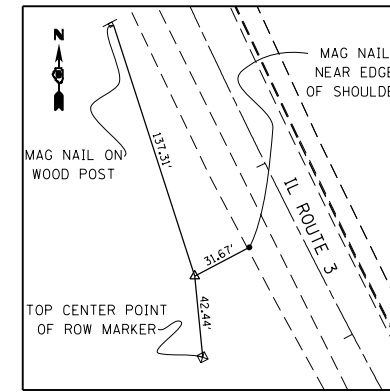
CP MW 24
5/8" REBAR W/ CAP
602,741.2800 N
2,300,536.9410 E
STA 2018+26.68, 75.58' RT



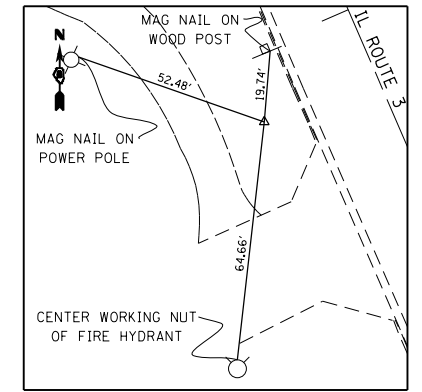
CP MW 25
IRON PIN W/ TONY HARD CAP
603,873.3890 N
2,300,381.6430 E
STA 2029+98.19, 51.46' RT



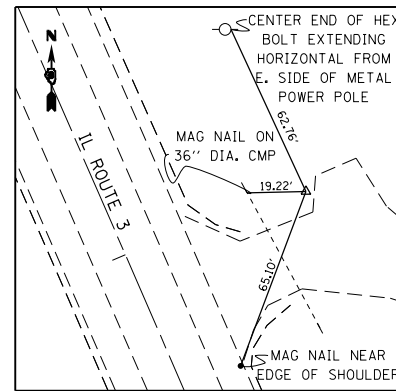
CP MW 26
5/8" REBAR W/ CAP
604,856.2160 N
2,300,009.9400 E
STA 2040+56.96, 41.39' LT



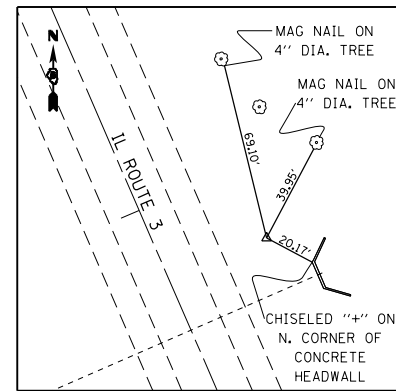
CP MW 27
5/8" REBAR W/ CAP
605,903.1180 N
2,299,413.8950 E
STA 2052+59.29, 46.89' LT



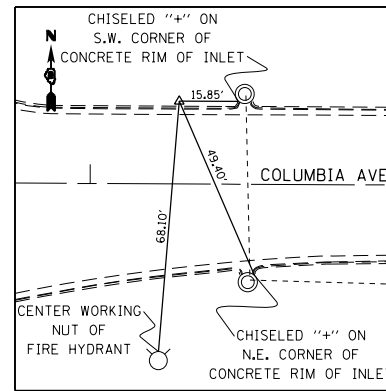
CP MW 28
5/8" REBAR W/ CAP
607,031.6400 N
2,298,946.8780 E
STA 2064+77.56, 28.96' LT



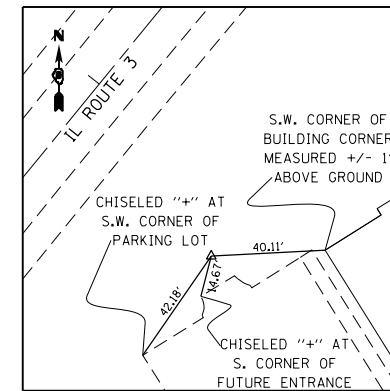
CP MW 29
5/8" REBAR W/ CAP
608,183.8100 N
2,298,554.2110 E
STA 2076+91.34, 63.69' RT



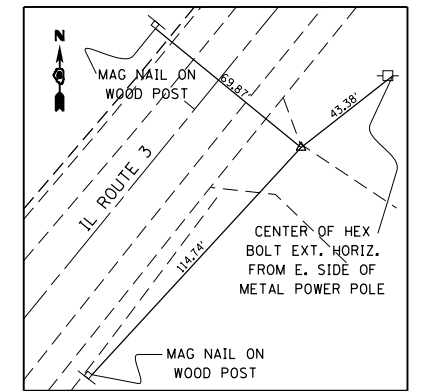
CP MW 30
5/8" REBAR W/ CAP
609,343.7760 N
2,298,022.4380 E
STA 2089+70.94, 40.53' RT



CP MW 31
5/8" REBAR W/ CAP
610,402.6630 N
2,297,857.7450 E
STA 31+23.09, 21.55' LT



CP MW 32
5/8" REBAR W/ CAP
611,532.1000 N
2,298,267.6110 E
STA 2113+78.08, 68.78' RT



CP MW 33
5/8" REBAR W/ CAP
612,507.9490 N
2,299,026.6860 E
STA 2126+14.05, 39.58' RT

LAST SAVED = 1/25/2013 3:29:12 PM
PEN TABLE = 1025441.dwg
PLOT DRIVER = pdfplotlayers.plt

FILE NAME =	USER NAME = beriechmann	DESIGNED -	REVISED -
1:\1001100\Phase II - 76817\Cad\T\Plans\007_0876817-shd-ATB-10.dgn		DRAWN -	REVISED -
	PLOT SCALE = 100.0000' / 1"	CHECKED -	REVISED -
	PLOT DATE = 1/25/2013 3:29:12 PM	DATE -	REVISED -

STATE OF ILLINOIS
DEPARTMENT OF TRANSPORTATION



ALIGNMENTS, TIES, AND BENCHMARKS

SCALE: NONE

SHEET NO. 10 OF 20 SHEETS

STA.

TO STA.

F.A.P. RTE.	SECTION	COUNTY	TOTAL SHEETS	SHEET NO.
312	68-WRS-1	MONROE	760	90
CONTRACT NO. 76817				
ILLINOIS FED. AID PROJECT				