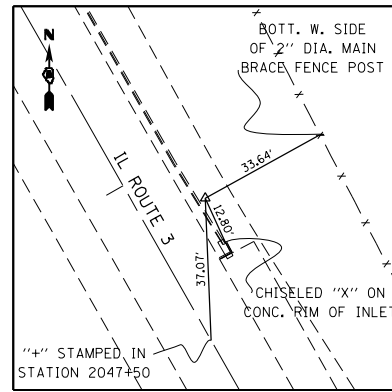
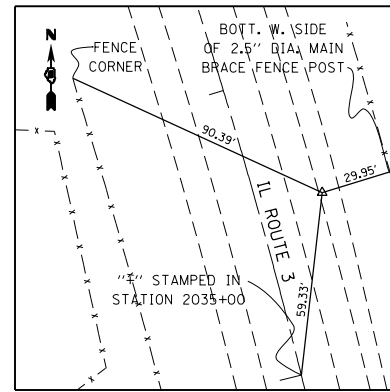


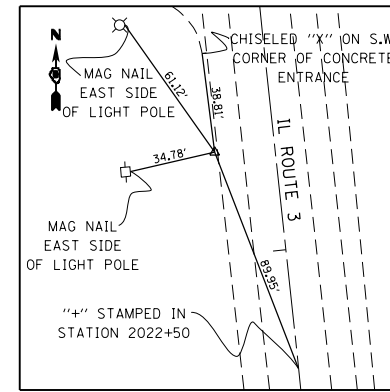
CP 11  
 IRON PIN W/ CAP  
 606,542.3740 N  
 2,299,104.8270 E  
 STA 8+93.71, 37.34' LT



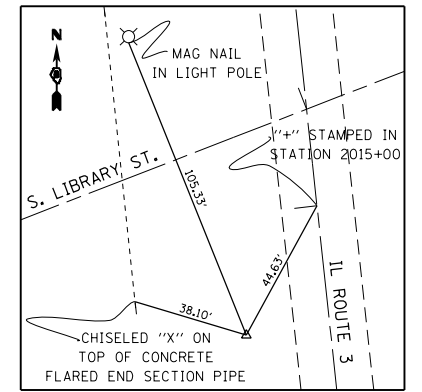
CP 12  
 IRON PIN W/ CAP  
 605,520.9850 N  
 2,299,713.4650 E  
 STA 2047+81.34, 29.98' RT



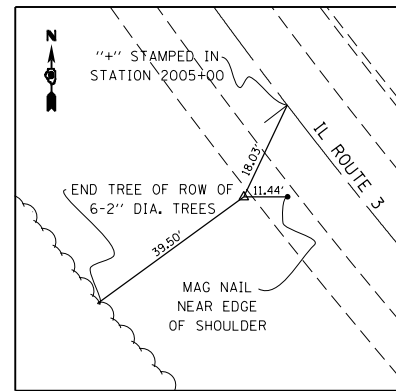
CP 13  
 IRON PIN W/ CAP  
 604,426.3010 N  
 2,300,276.1570 E  
 STA 2035+55.61, 35.64' RT



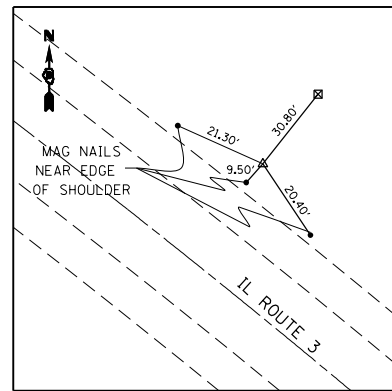
CP 14  
 IRON PIN W/ CAP  
 603,211.7940 N  
 2,300,386.7290 E  
 STA 2023+40.57, 23.43' LT



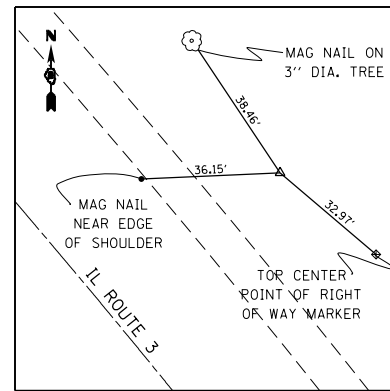
CP 15  
 IRON PIN W/ IDOT CAP  
 602,335.9770 N  
 2,300,476.6810 E  
 STA 2014+60.15, 27.69' LT



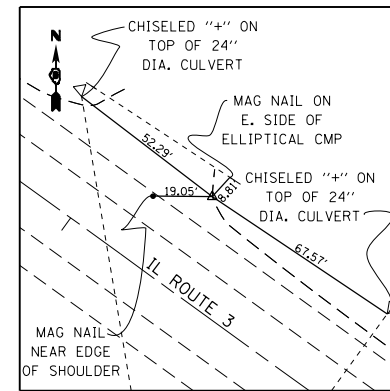
CP 16  
 IRON PIN W/ CAP  
 601,417.4310 N  
 2,300,787.3930 E  
 STA 2005+17.50, 63.38' LT



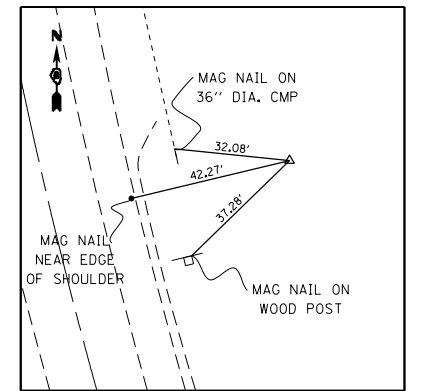
CP 17  
 IRON PIN W/ CAP  
 600,682.0460 N  
 2,301,785.3150 E  
 STA 1992+51.19, 23.30' RT



CP MW 21  
 5/8" REBAR W/ CAP  
 600,336.9060 N  
 2,302,185.3120 E  
 STA 1987+31.34, 57.75' RT



CP MW 22  
 5/8" REBAR W/ CAP  
 600,995.1560 N  
 2,301,373.7590 E  
 STA 1997+67.12, 32.28' RT



CP MW 23  
 5/8" REBAR W/ CAP  
 601,961.8310 N  
 2,300,619.4540 E  
 STA 2010+64.24, 63.62' RT

LAST SAVED = 1/25/2013  
 PEN TABLE = 10244141  
 PLOT DRIVER = pdfNCLAYERShp21.ctb

FILE NAME =	USER NAME = beriechmann	DESIGNED -	REVISED -
I:\1001100\Phase II - 76817\Cad\T\Plans\007_0876817-shr-ATB-9.dgn		DRAWN -	REVISED -
	PLOT SCALE = 100.0000' / 1"	CHECKED -	REVISED -
	PLOT DATE = 1/25/2013 3:29:11 PM	DATE -	REVISED -

STATE OF ILLINOIS  
 DEPARTMENT OF TRANSPORTATION

HORNER &  
 SHIRIN, INC.  
 ENGINEERS

ALIGNMENTS, TIES, AND BENCHMARKS

SCALE: NONE SHEET NO. 9 OF 20 SHEETS STA. TO STA.

F.A.P. RTE.	SECTION	COUNTY	TOTAL SHEETS	SHEET NO.
312	68-WRS-1	MONROE	760	89
CONTRACT NO. 76817				
ILLINOIS FED. AID PROJECT				